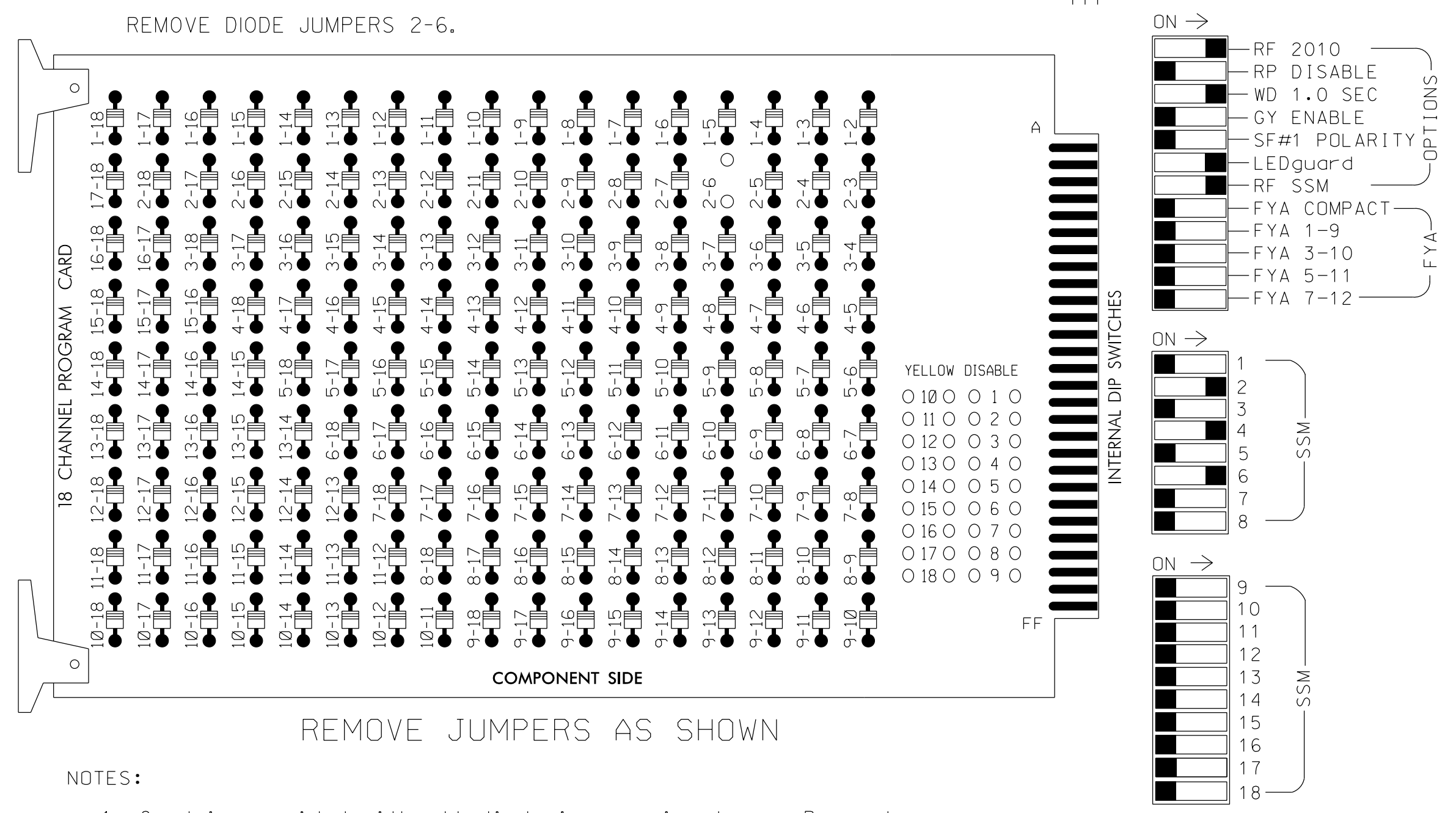


EDI MODEL 2018ECLip-NC CONFLICT MONITOR PROGRAMMING DETAIL

(remove jumpers and set switches as shown)



NOTES:

- Card is provided with all diode jumpers in place. Removal of any jumper allows its channels to run concurrently.
- Ensure jumpers SEL2-SEL5 and SEL9 are present on the monitor board.
- Ensure that Red Enable is active at all times during normal operation.
- Integrate monitor with Ethernet network in cabinet.

NOTES

- To prevent "flash-conflict" problems, insert red flash program blocks for all unused vehicle load switches in the output file. The installer shall verify that signal heads flash in accordance with the Signal Plans.
- Enable Simultaneous Gap-Out for all phases.
- Program phases 2 and 6 for Start Up In Green.
- Program phases 2 and 6 for Yellow Flash.
- The cabinet and controller are part of the Asheville Signal System.

SIGNAL HEAD HOOK-UP CHART

LOAD SWITCH NO.	S1	S2	S3	S4	S5	S6	S7	S8	S9	S10	S11	S12
CMU CHANNEL NO.	1	2	13	3	4	14	5	6	15	7	8	16
PHASE	1	2	2 PED	3	4	4 PED	5	6	6 PED	7	8	8 PED
SIGNAL HEAD NO.	NU	21,22, 23	NU	NU	41,42	NU	NU	61,62, 63	NU	NU	NU	NU
RED		128			101			134				
YELLOW		129			102			135				
GREEN		130			103			136				
RED ARROW												
YELLOW ARROW												
GREEN ARROW												
Hand icon												
Walking person icon												

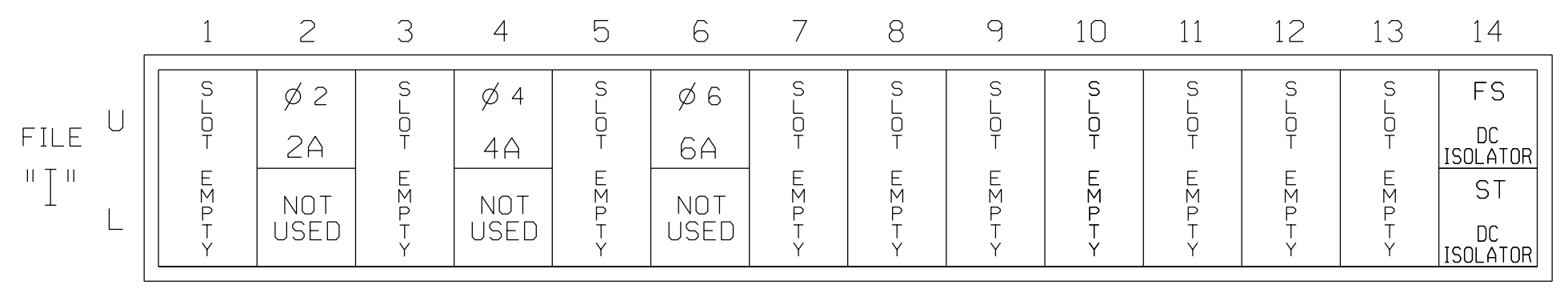
NU = Not Used

EQUIPMENT INFORMATION

CONTROLLER.....2070E
 CABINET.....336
 SOFTWARE.....ECONOLITE OASIS
 CABINET MOUNT.....POLE
 OUTPUT FILE POSITIONS...12
 LOAD SWITCHES USED.....S2,S5,S8
 PHASES USED.....2,4,6
 OVERLAPS.....NONE

INPUT FILE POSITION LAYOUT

(front view)



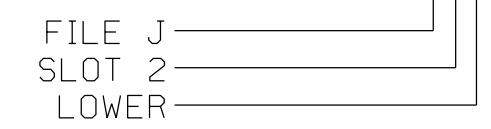
EX.: 1A, 2A, ETC. = LOOP NO.'S

FS = FLASH SENSE
 ST = STOP TIME
 PRE = PREEMPT

INPUT FILE CONNECTION & PROGRAMMING CHART

LOOP NO.	LOOP TERMINAL	INPUT FILE POS.	PIN NO.	INPUT ASSIGNMENT NO.	DETECTOR NO.	NEMA PHASE	CALL	EXTEND	FULL TIME DELAY	STRETCH TIME	DELAY TIME
2A	TB21-3,4	I2U	39	1	2	2	Y	Y			
4A	TB21-7,8	I4U	41	3	4	4	Y	Y			5
6A	TB21-11,12	I6U	40	2	6	6	Y	Y			

INPUT FILE POSITION LEGEND: J2L



THIS ELECTRICAL DETAIL IS FOR THE SIGNAL DESIGN: COA-25
 DESIGNED: September 2016
 SEALED: December 2016
 REVISED:

15-DEC-2016 16:04 D:\Transporation\Traffic\Cur*100048632 U-4715B Asheville\11e S1g Sys\Task 05_ 11_Signals\Design\MTF\ing\0425E.dgn encs386 AT LUS200321

Signal Upgrade

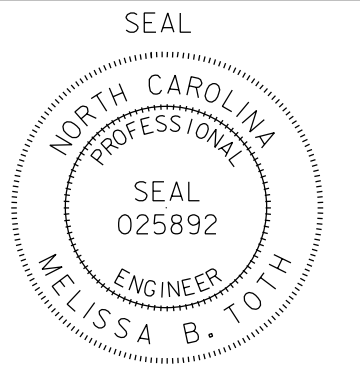
ELECTRICAL AND PROGRAMMING DETAILS FOR:
 Prepared For the Offices of:



Fairview Road at Third Street

Division 13 Suncombe County Asheville
 PLAN DATE: September 2016 REVIEWED BY: MB Toth
 PREPARED BY: AM Encarnacion REVIEWED BY:

REVISIONS	INIT.	DATE



12/16/2016
 DATE
 SIG. INVENTORY NO. COA-25