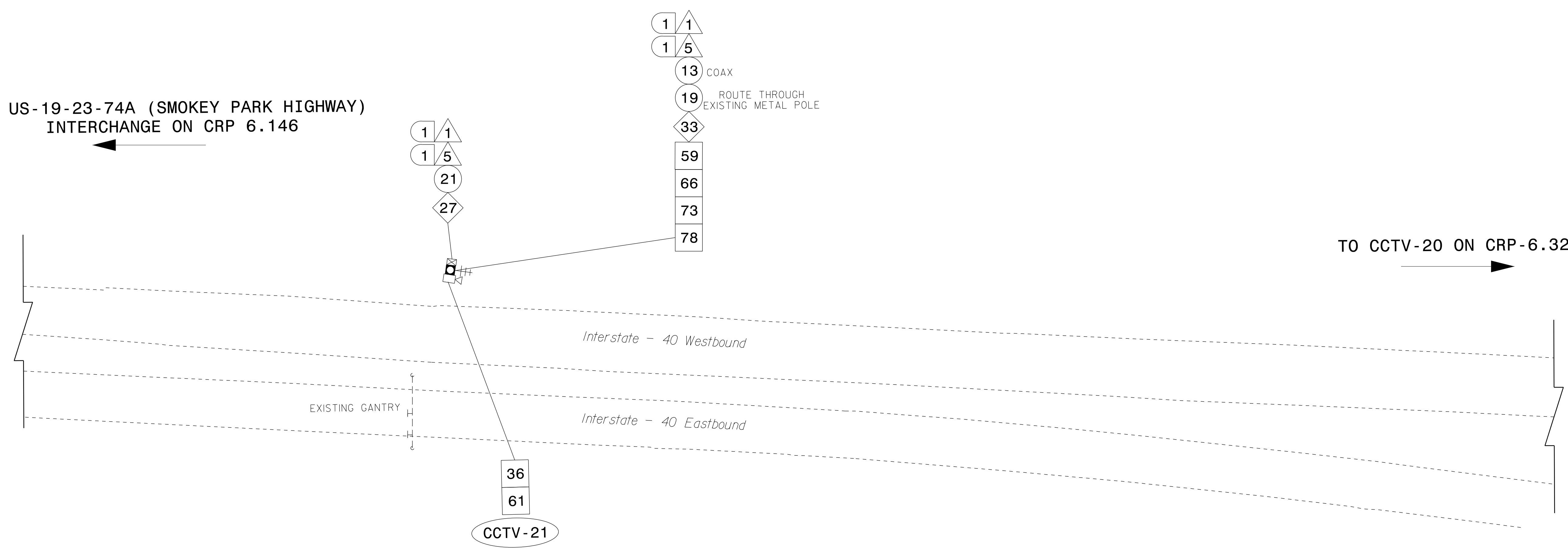


TO US-19-23-74A (SMOKEY PARK HIGHWAY) INTERCHANGE ON CRP 6.146

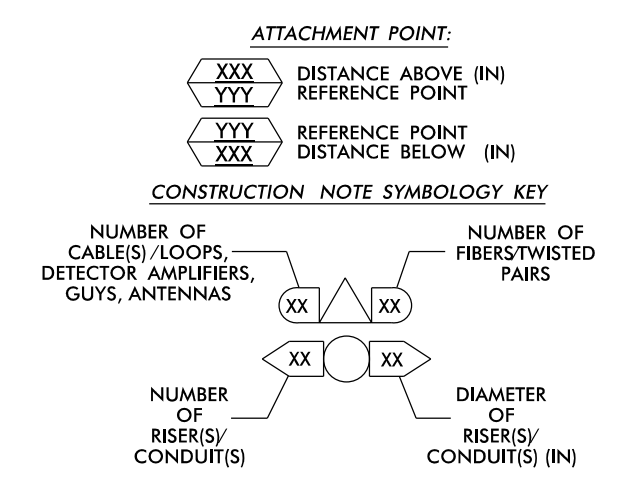
TO CCTV-20 ON CRP-6.328



GPS COORDINATES: N 35 33.443 W 82 37.429

- NOTES:
1. UNLESS OTHERWISE NOTED:
- OVERLASH NEW FIBER OPTIC CABLE TO EXISTING COMMUNICATIONS CABLE.
- ATTACH NEW MESSENGER CABLE 40" BELOW POWER.
- ATTACH ON FRONT SIDE (FS) OF POLE.
2. SEAL ALL CONDUIT ENDS WITH DUCT AND CONDUIT SEALER, AT ALL JUNCTION BOX / CABINET ENTRANCES.

Table with 4 columns and 12 rows of callout items. Each item includes a callout number in a triangle, circle, diamond, or square, followed by a description of the work to be performed.



ATKINS 1616 EAST MILLBROOK ROAD, SUITE 160 RALEIGH, NORTH CAROLINA 27609 (919) 876-6888 NCBEEES #F-0326

Project information block including the Atkins logo, project name 'Asheville Signal System Cable Routing Plans', division '13 Buncombe County Asheville', plan date 'December 2016', and a professional seal for Melissa B. Toth, Engineer No. 025892.

22-DEC-2016 10:16 0:47:15B Asheville:110 S:ig SysTask 11-CL-ACL 329.dgn