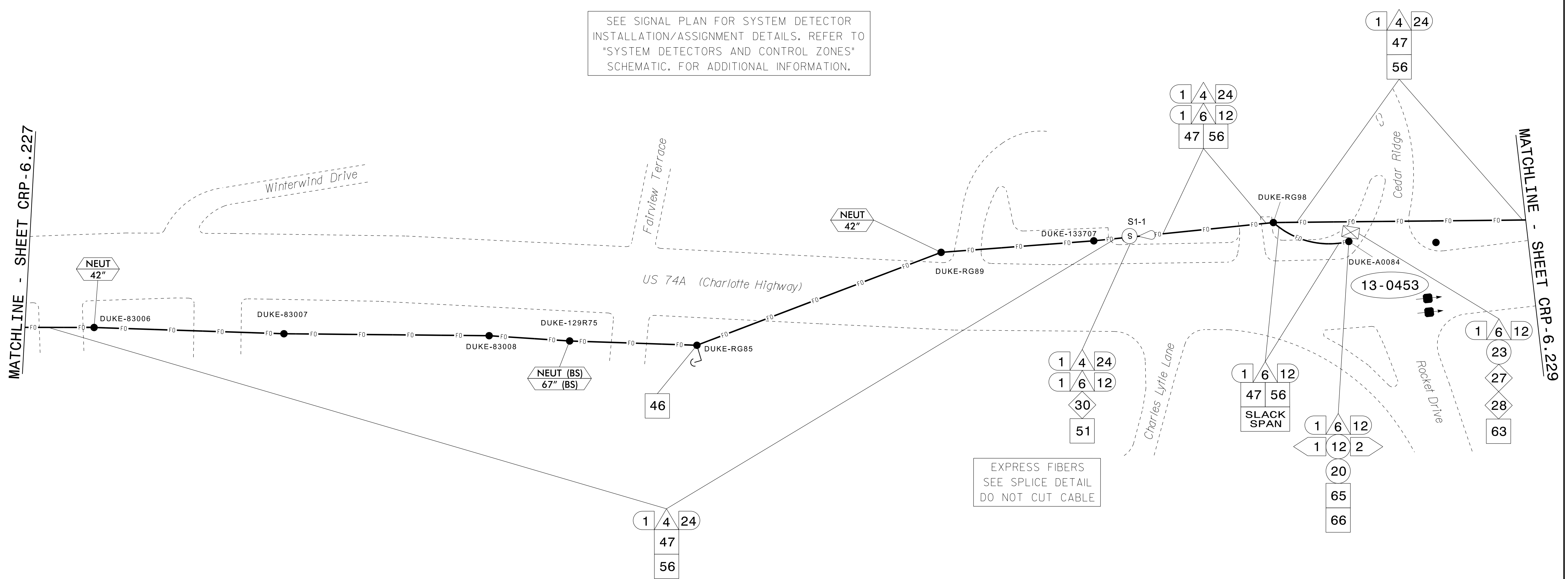


SEE SIGNAL PLAN FOR SYSTEM DETECTOR INSTALLATION/ASSIGNMENT DETAILS. REFER TO "SYSTEM DETECTORS AND CONTROL ZONES" SCHEMATIC FOR ADDITIONAL INFORMATION.

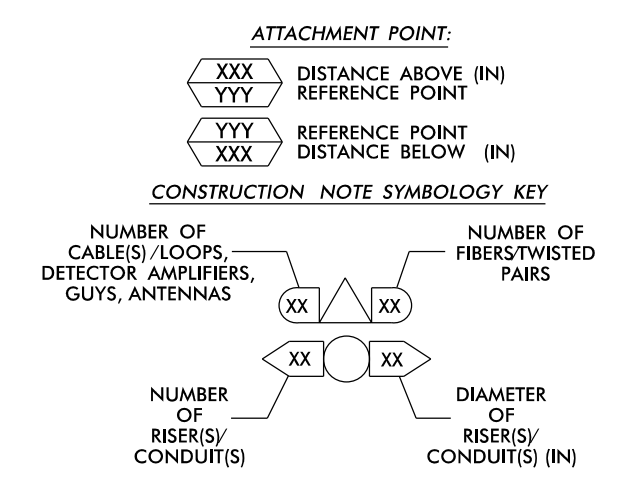


EXPRESS FIBERS
SEE SPLICE DETAIL
DO NOT CUT CABLE

NOTES:

- 1. UNLESS OTHERWISE NOTED:
- OVERLASH NEW FIBER OPTIC CABLE TO EXISTING COMMUNICATIONS CABLE.
- ATTACH NEW MESSENGER CABLE 40" BELOW POWER.
- ATTACH ON FRONT SIDE (FS) OF POLE.
- 2. SEAL ALL CONDUIT ENDS WITH DUCT AND CONDUIT SEALER, AT ALL JUNCTION BOX / CABINET ENTRANCES.

| | | | | | | |
|-------------------------------------------------------------------|------------------------------------------------------------------------------------|----------------------------------------------------------------------------------------|--------------------------------------------------------------|------------------------------------------------------------------------------------|-------------------------------------------------------------------|-----------------------------------------------------|
| 1. INSTALL COMPOSITE CCTV CABLE | 13. INSTALL HEAT SHRINK TUBING RETROFIT KIT | 25. INSTALL NEW RISER INTO POLE MOUNTED CABINET | 37. INSTALL CCTV WOOD POLE | 49. REMOVE EXISTING COMMUNICATIONS CABLE | 60A. INSTALL NEW POLE MOUNTED CABINET FOR ANTENNA (RADIO CABINET) | 72. INSTALL 900 MHZ RADIO WITH PANEL ANTENNA |
| 2. INSTALL LOW VOLTAGE POWER CABLE (24VAC) | 14. INSTALL HIGH DENSITY POLYETHYLENE CONDUIT | 26. INSTALL DIGITAL VIDEO ENCODER | 38. INSTALL STANDARD SIZE JUNCTION BOX | 50. INSTALL WIRELESS DSL | 61. REMOVE EXISTING CCTV CAMERA ASSEMBLY | 73. INSTALL 2.4 GHZ ETHERNET RADIO AND YAGI ANTENNA |
| 3. INSTALL CATEGORY 5E CABLE | 15. DIRECTIONAL DRILL CONDUIT | 27. INSTALL NEW ETHERNET EDGE SWITCH IN CABINET | 39. INSTALL SPECIAL-SIZED JUNCTION BOX | 51. INSTALL CABLE STORAGE GUIDE(S) [SNOW SHOE(S)] AND STORE 100 FEET OF EACH CABLE | 62. NEW CABINET ENTRANCE INTO NEW FOUNDATION | 74. INSTALL 2.4 GHZ ETHERNET RADIO |
| 4. INSTALL SMFO CABLE | 16. BORE AND JACK CONDUIT | 28. INSTALL INTERCONNECT CENTER PATCH PANEL JUMPERS AND FUSION SPLICE CABLE IN CABINET | 40. INSTALL OVER-SIZED JUNCTION BOX | 52. INSTALL DELINEATOR MARKER | 63. DRILLCORE DRILL EXISTING FOUNDATION | 75. INSTALL OMNI ANTENNA |
| 5. INSTALL COAXIAL ANTENNA CABLE | 17. INSTALL CABLE(S) IN EXISTING CONDUIT | 29. INSTALL UNDERGROUND SPLICE ENCLOSURE | 41. REMOVE EXISTING JUNCTION BOX | 53. STORE 50 FEET OF COMMUNICATIONS CABLE (EACH CABLE) | 64. INTERCEPT AND REROUTE EXISTING CONDUITS | 76. INSTALL 900 MHZ ETHERNET RADIO |
| 6. INSTALL FIBER-OPTIC DROP CABLE | 18. INSTALL CABLE(S) IN NEW CONDUIT | 30. INSTALL AERIAL SPLICE ENCLOSURE | 42. INSTALL WOOD POLE | 54. LASH CABLE(S) TO EXISTING SIGNAL/COMMUNICATIONS CABLE | 65. BOND MESSENGER TO POLE GROUND | 77. INSTALL CCTV METAL POLE |
| 7. INSTALL TRACER WIRE | 19. INSTALL CABLE(S) IN EXISTING RISER(S) | 31. INSTALL SPLICE CABINET | 43. REMOVE EXISTING WOOD POLE | 55. LASH CABLE(S) TO EXISTING MESSENGER CABLE | 66. BOND RISER TO POLE GROUND | 78. REMOVE WIRELESS COMMUNICATIONS EQUIPMENT |
| 8. INSTALL CONDUIT UNDERGROUND | 20. INSTALL CABLE(S) IN NEW RISER(S) | 32. MODIFY EXISTING SPLICE ENCLOSURE OR INTERCONNECT CENTER | 44. INSTALL AERIAL GUY ASSEMBLY | 56. LASH CABLE(S) TO NEW MESSENGER CABLE | 67. BOND TRACER WIRE TO EQUIPMENT GROUND BUS | 79. INSTALL CELLULAR MODEM |
| 9. INSTALL PVC CONDUIT | 21. INSTALL CABLE(S) IN EXISTING CABINET ENTRANCE | 33. REMOVE EXISTING SPLICE / HUB / CCTV CABINET | 45. INSTALL STANDARD GUY ASSEMBLY | 57. MODIFY EXISTING ELECTRICAL SERVICE FOR CCTV | 68. BOND TRACER WIRE TO POLE GROUND | 80. INSTALL YAGI ANTENNA |
| 10. INSTALL RIGID, GALVANIZED STEEL CONDUIT | 22. INSTALL NEW CONDUIT INTO CABINET BASE (USE EX CABINET ENTRANCE WHEN AVAILABLE) | 34. INSTALL CABINET FOUNDATION | 46. INSTALL SIDEWALK GUY ASSEMBLY | 58. INSTALL NEW ELECTRICAL SERVICE FOR CCTV OR RADIO | 69. HANDLASH AND INSTALL AERIAL CABLE PROTECTOR | |
| 11. INSTALL RIGID, GALVANIZED STEEL RISER WITH WEATHERHEAD | 23. INSTALL NEW RISER INTO CABINET BASE (USE EX CABINET ENTRANCE WHEN AVAILABLE) | 35. REMOVE EXISTING CABINET FOUNDATION | 47. INSTALL MESSENGER CABLE | 59. INSTALL NEW POLE MOUNTED CCTV CABINET (336) | 70. INSTALL HUB CABINET | |
| 12. INSTALL RIGID, GALVANIZED STEEL RISER WITH HEAT SHRINK TUBING | 24. INSTALL NEW CONDUIT INTO POLE MOUNTED CABINET | 36. INSTALL CCTV CAMERA ASSEMBLY | 48. REMOVE EXISTING COMMUNICATIONS CABLE AND MESSENGER CABLE | 60. INSTALL NEW POLE MOUNTED CCTV CABINET (NEMA TYPE 4) | 71. INSTALL MANAGED ETHERNET SWITCH | |



ATKINS 1616 EAST MILLBROOK ROAD, SUITE 160 RALEIGH, NORTH CAROLINA 27609 (919) 876-6888 NCBEES #F-0326

Asheville Signal System Cable Routing Plans. Includes project details, revision table, and professional seal for Melissa B. Toth, Engineer, North Carolina. Scale: 1"=50'. Date: 12/15/2016.

15-DEC-2016 14:09 D:\projects\atkins\crp\crp6\crp6.dwg U-4715B Asheville\110 Sig Sys\Task 11_C1_ML 228.dgn AT DUS300019