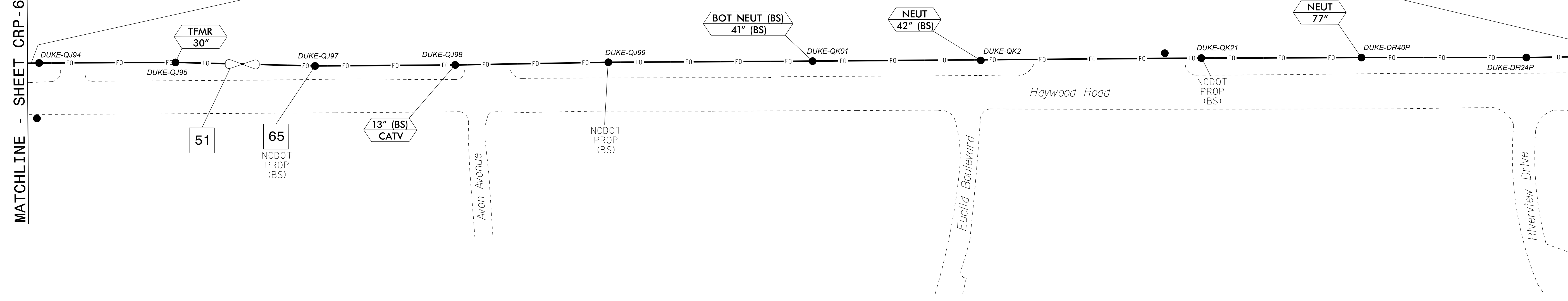


1 4 60
47
56

MATCHLINE - SHEET CRP-6.169

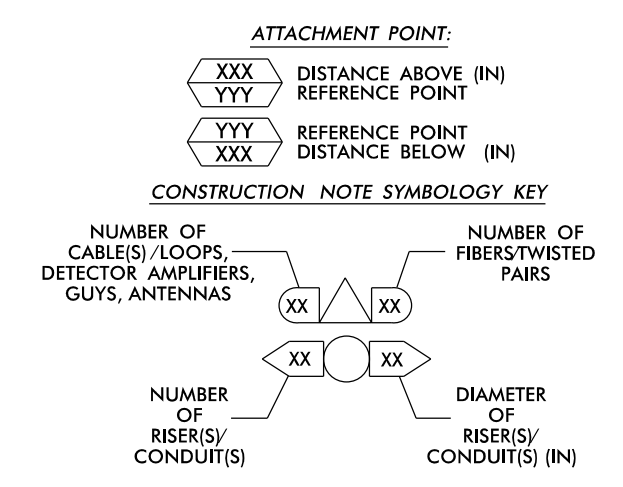
MATCHLINE - SHEET CRP-6.171



NOTES:

- 1. UNLESS OTHERWISE NOTED:
- OVERLASH NEW FIBER OPTIC CABLE TO EXISTING COMMUNICATIONS CABLE.
- ATTACH NEW MESSENGER CABLE 40" BELOW POWER.
- ATTACH ON FRONT SIDE (FS) OF POLE.
2. SEAL ALL CONDUIT ENDS WITH DUCT AND CONDUIT SEALER, AT ALL JUNCTION BOX / CABINET ENTRANCES.

Table with 4 columns and 12 rows of callout numbers and descriptions for various cable and equipment installation tasks.



ATKINS 1616 EAST MILLBROOK ROAD, SUITE 160 RALEIGH, NORTH CAROLINA 27609 (919) 876-6888 NCBEEES #F-0326

Project information block including the Atkins logo, project name 'Asheville Signal System Cable Routing Plans', division details, plan date, and a professional seal for Melissa B. Toth.

15-DEC-2016 14:08 D:\projects\atkins\crp\crp6\crp6.dwg U-4715B Asheville\110 Sig Sys\Task 11-CL\170.dgn AT DUS300019