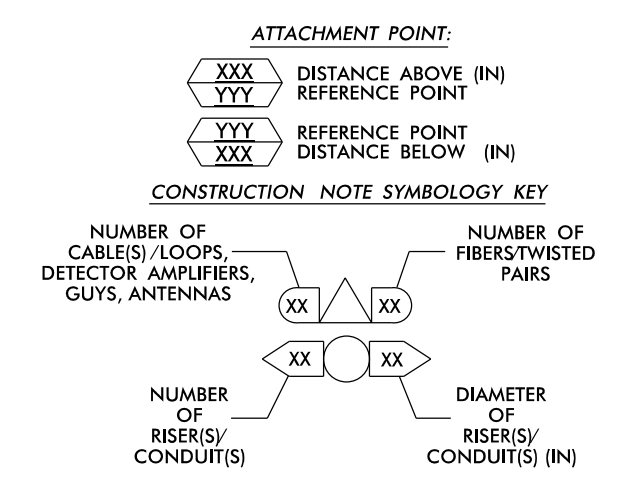


EXPRESS FIBERS
SEE SPLICE DETAIL
DO NOT CUT CABLE

SEE SIGNAL PLAN FOR SYSTEM DETECTOR
INSTALLATION/ASSIGNMENT DETAILS. REFER TO
"SYSTEM DETECTORS AND CONTROL ZONES"
SCHEMATIC. FOR ADDITIONAL INFORMATION.

- NOTES:**
- UNLESS OTHERWISE NOTED:
 - OVERLASH NEW FIBER OPTIC CABLE TO EXISTING COMMUNICATIONS CABLE.
 - ATTACH NEW MESSENGER CABLE 40" BELOW POWER.
 - ATTACH ON FRONT SIDE (FS) OF POLE.
 - SEAL ALL CONDUIT ENDS WITH DUCT AND CONDUIT SEALER, AT ALL JUNCTION BOX / CABINET ENTRANCES.

1	INSTALL COMPOSITE CCTV CABLE	13	INSTALL HEAT SHRINK TUBING RETROFIT KIT	25	INSTALL NEW RISER INTO POLE MOUNTED CABINET	37	INSTALL CCTV WOOD POLE	49	REMOVE EXISTING COMMUNICATIONS CABLE	60A	INSTALL NEW POLE MOUNTED CABINET FOR ANTENNA (RADIO CABINET)	72	INSTALL 900 MHZ RADIO WITH PANEL ANTENNA
2	INSTALL LOW VOLTAGE POWER CABLE (24VAC)	14	INSTALL HIGH DENSITY POLYETHYLENE CONDUIT	26	INSTALL DIGITAL VIDEO ENCODER IN CABINET	38	INSTALL STANDARD SIZE JUNCTION BOX	50	INSTALL WIRELESS DSL	61	REMOVE EXISTING CCTV CAMERA ASSEMBLY	73	INSTALL 2.4 GHZ ETHERNET RADIO AND YAGI ANTENNA
3	INSTALL CATEGORY 5E CABLE	15	DIRECTIONAL DRILL CONDUIT	27	INSTALL NEW ETHERNET EDGE SWITCH IN CABINET	39	INSTALL SPECIAL-SIZED JUNCTION BOX	51	INSTALL CABLE STORAGE GUIDE(S) [SNOW SHOE(S)] AND STORE 100 FEET OF EACH CABLE	62	NEW CABINET ENTRANCE INTO NEW FOUNDATION	74	INSTALL 2.4 GHZ ETHERNET RADIO
4	INSTALL SMFO CABLE	16	BORE AND JACK CONDUIT	28	INSTALL INTERCONNECT CENTER PATCH PANEL JUMPERS, AND FUSION SPLICE CABLE IN CABINET	40	INSTALL OVER-SIZED JUNCTION BOX	52	INSTALL DELINEATOR MARKER	63	DRILL/ORE DRILL EXISTING FOUNDATION	75	INSTALL OMNI ANTENNA
5	INSTALL COAXIAL ANTENNA CABLE	17	INSTALL CABLE(S) IN EXISTING CONDUIT	29	INSTALL UNDERGROUND SPLICE ENCLOSURE	41	REMOVE EXISTING JUNCTION BOX	53	STORE 50 FEET OF COMMUNICATIONS CABLE (EACH CABLE)	64	INTERCEPT AND REROUTE EXISTING CONDUITS	76	INSTALL 900 MHZ ETHERNET RADIO
6	INSTALL FIBER-OPTIC DROP CABLE	18	INSTALL CABLE(S) IN NEW CONDUIT	30	INSTALL AERIAL SPLICE ENCLOSURE	42	INSTALL WOOD POLE	54	LASH CABLE(S) TO EXISTING SIGNAL/COMMUNICATIONS CABLE	65	BOND MESSENGER TO POLE GROUND	77	INSTALL CCTV METAL POLE
7	INSTALL TRACER WIRE	19	INSTALL CABLE(S) IN EXISTING RISER(S)	31	INSTALL SPLICE CABINET	43	REMOVE EXISTING WOOD POLE	55	LASH CABLE(S) TO EXISTING MESSENGER CABLE	66	BOND RISER TO POLE GROUND	78	REMOVE WIRELESS COMMUNICATIONS EQUIPMENT
8	INSTALL CONDUIT UNDERGROUND	20	INSTALL CABLE(S) IN NEW RISER(S)	32	MODIFY EXISTING SPLICE ENCLOSURE OR INTERCONNECT CENTER	44	INSTALL AERIAL GUY ASSEMBLY	56	LASH CABLE(S) TO NEW MESSENGER CABLE	67	BOND TRACER WIRE TO EQUIPMENT GROUND BUS	79	INSTALL CELLULAR MODEM
9	INSTALL PVC CONDUIT	21	INSTALL CABLE(S) IN EXISTING CABINET ENTRANCE	33	REMOVE EXISTING SPLICE / HUB / CCTV CABINET	45	INSTALL STANDARD GUY ASSEMBLY	57	MODIFY EXISTING ELECTRICAL SERVICE FOR CCTV	68	BOND TRACER WIRE TO POLE GROUND	80	INSTALL YAGI ANTENNA
10	INSTALL RIGID, GALVANIZED STEEL CONDUIT	22	INSTALL NEW CONDUIT INTO CABINET BASE (USE EX CABINET ENTRANCE WHEN AVAILABLE)	34	INSTALL CABINET FOUNDATION	46	INSTALL SIDEWALK GUY ASSEMBLY	58	INSTALL NEW ELECTRICAL SERVICE FOR CCTV OR RADIO	69	HANDLASH AND INSTALL AERIAL CABLE PROTECTOR		
11	INSTALL RIGID, GALVANIZED STEEL RISER WITH WEATHERHEAD	23	INSTALL NEW RISER INTO CABINET BASE (USE EX CABINET ENTRANCE WHEN AVAILABLE)	35	REMOVE EXISTING CABINET FOUNDATION	47	INSTALL MESSENGER CABLE	59	INSTALL NEW POLE MOUNTED CCTV CABINET (336)				
12	INSTALL RIGID, GALVANIZED STEEL RISER WITH HEAT SHRINK TUBING	24	INSTALL NEW CONDUIT INTO POLE MOUNTED CABINET	36	INSTALL CCTV CAMERA ASSEMBLY	48	REMOVE EXISTING COMMUNICATIONS CABLE AND MESSENGER CABLE	60	INSTALL NEW POLE MOUNTED CCTV CABINET (NEMA TYPE 4)				



ATKINS 1616 EAST MILLBROOK ROAD, SUITE 160
RALEIGH, NORTH CAROLINA 27609
(919) 876-6888 NCBEEES #F-0326

DOCUMENT NOT CONSIDERED FINAL UNLESS ALL SIGNATURES COMPLETED

Prepared for the Offices of:

NC Transportation

750 Greenfield Parkway, Garner, NC 27529

Asheville Signal System
Cable Routing Plans

Division 13 Buncombe County Fletcher

PLAN DATE: December 2016 REVIEWED BY: M B Toth

PREPARED BY: J A Wiles REVIEWED BY:

REVISIONS

INIT. DATE

SCALE: 1"=50'

12/15/2016

Melissa B. Toth

CADD File name: CL_081.dgn

15-DEC-2016 14:05
 D:\projects\atkins\crp\crp6081\sig Sys\Task 11-CL-ACL 081.dgn
 U-4715B Asheville\11-CL-ACL 081.dgn
 AT_DUS300019