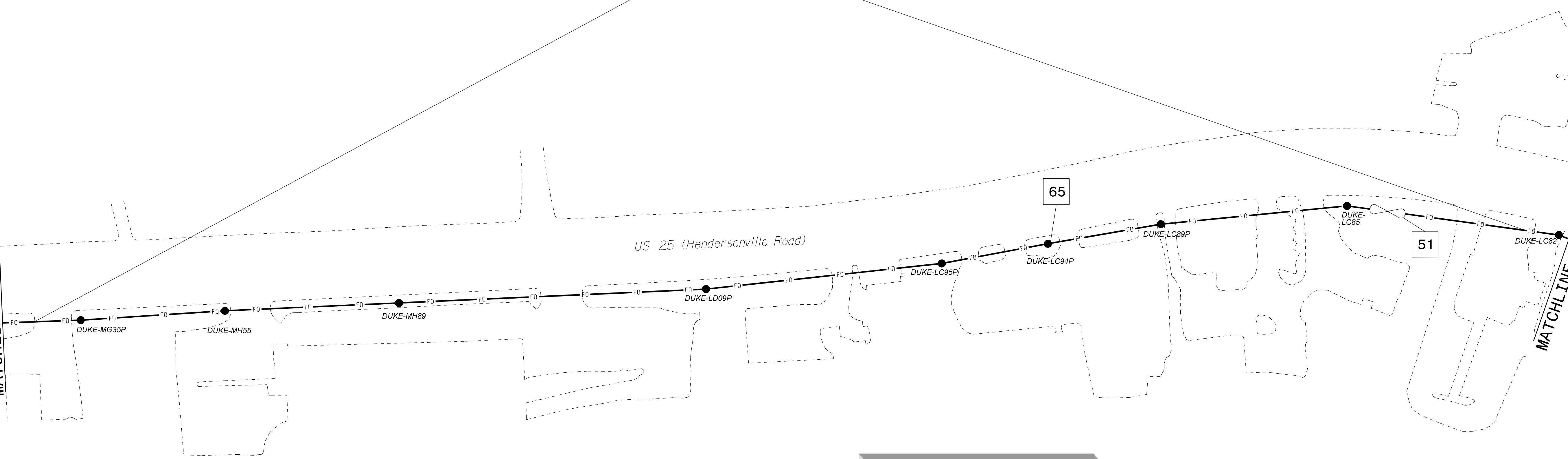


1 4 60
54

MATCHLINE - SHEET CRP-6.041

MATCHLINE - SHEET CRP-6.043

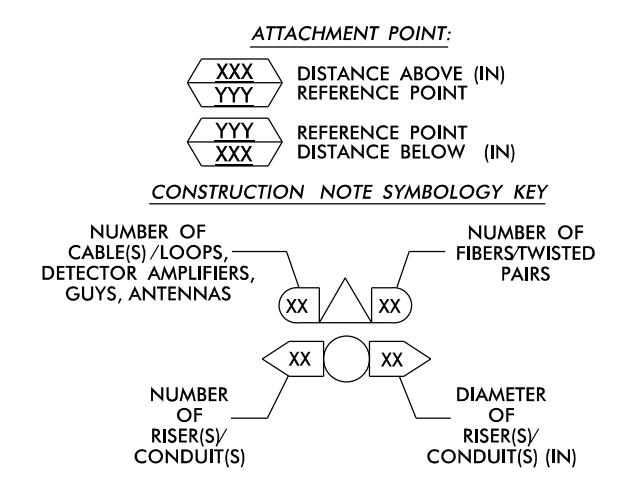


This area has been determined to contain properties with documented historic significance. If it is necessary to deviate from these plans in this area, alert the Engineer to contact Project Development and Environmental Analysis Branch - Historic Architecture Group of the North Carolina Department of Transportation for an effects determination before proceeding.

NOTES:

- 1. UNLESS OTHERWISE NOTED:
- OVERLASH NEW FIBER OPTIC CABLE TO EXISTING COMMUNICATIONS CABLE.
- ATTACH NEW MESSENGER CABLE 40" BELOW POWER.
- ATTACH ON FRONT SIDE (FS) OF POLE.
2. SEAL ALL CONDUIT ENDS WITH DUCT AND CONDUIT SEALER, AT ALL JUNCTION BOX / CABINET ENTRANCES.

Table with 8 columns and 12 rows of numbered callouts (1-80) and their corresponding descriptions for cable installation, equipment, and conduit work.



ATKINS 1616 EAST MILLBROOK ROAD, SUITE 160 RALEIGH, NORTH CAROLINA 27609 (919) 876-6888 NCBEEES #F-0326

Project information block including the Atkins logo, project name 'Asheville Signal System Cable Routing Plans', division '13 Buncombe County Asheville', plan date 'December 2016', and a signature block for Melissa B. Toth.

15-DEC-2016 14:04 D:\projects\crp\11\04715B_Ashveville\Sig_Sys\Task 11_CL\ACL_042.dgn AT DUS300019