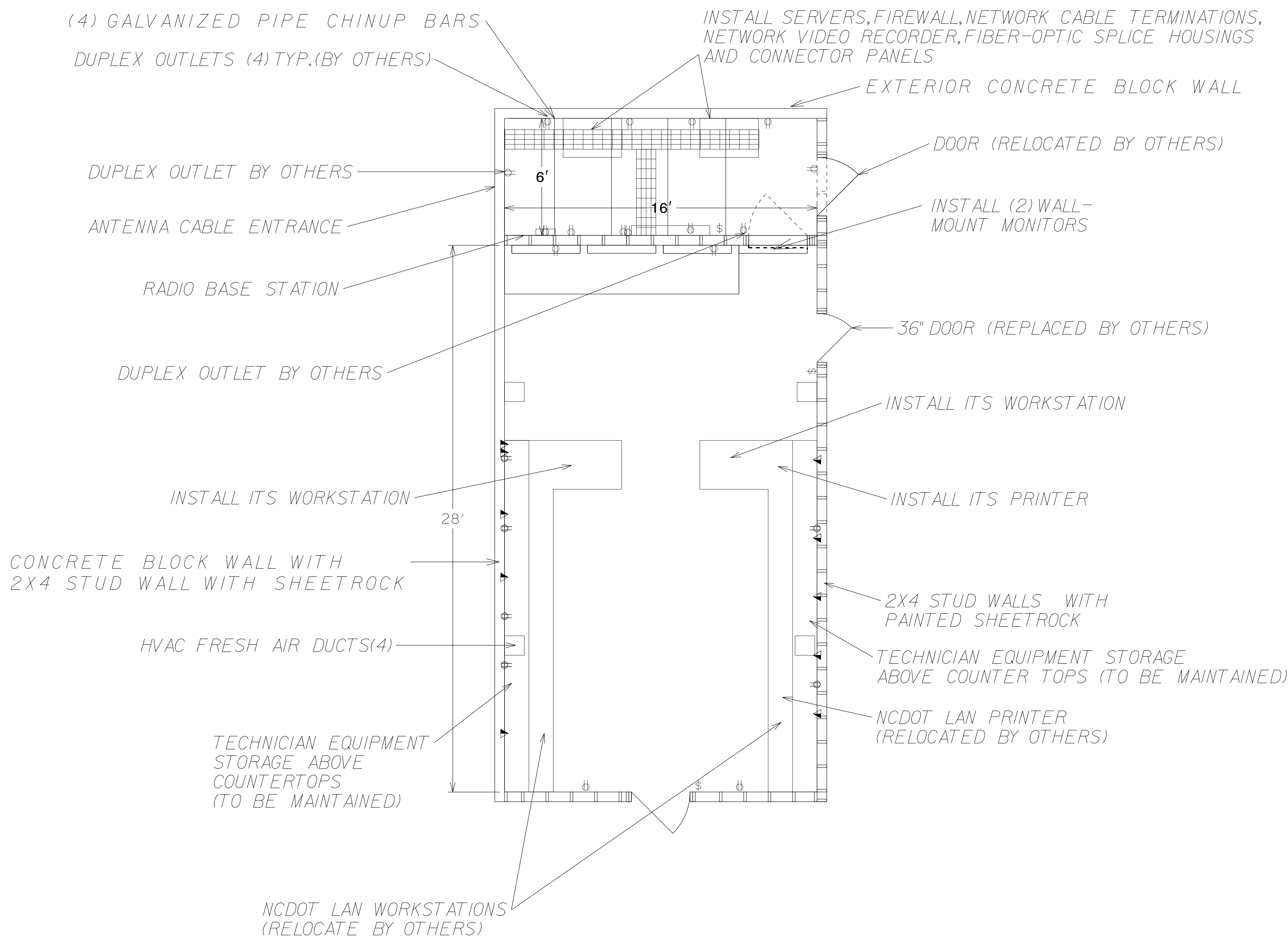


# CONTROL ROOM LAYOUT



## NOTES:

1. COORDINATE NCDOT EQUIPMENT RELOCATION WITH ENGINEER.
2. INSTALL NETWORK CABLING ABOVE ACOUSTIC CEILING AND THROUGH WOOD PARTITION WALLS.
3. SECURE ALL CABLING TO CEILING JOISTS AND STUD WALLS.
4. ALIGN PROPOSED MONITORS WITH BOTTOM OF EXISTING MONITORS AND MAINTAIN CURRENT SPACING BETWEEN MONITORS AS EXISTING.
5. TERMINATE CAT.5e NETWORK WIRING IN SERVER ROOM ON RACK MOUNTED PUNCHDOWN BLOCK.

## EQUIPMENT LAYOUT

**ATKINS** 1616 EAST MILLBROOK ROAD, SUITE 310  
 RALEIGH, NORTH CAROLINA 27609  
 (919) 876-6888 NCBEEES #F-0326

**DOCUMENT NOT CONSIDERED FINAL UNLESS ALL SIGNATURES COMPLETED**

 Prepared for the Offices of: <b>N.C. Transportation</b> 750 Greenfield Parkway, Garner, NC 27529	Asheville Signal System TMC Details (Sheet 4 of 7)		
	Division 13 Buncombe County Asheville	PLAN DATE: December 2016 REVIEWED BY: H A Badgett PREPARED BY: G B Spell REVIEWED BY: J T Brooks	
N.T.S.	REVISIONS INIT. DATE		Designed by: Henry Alfred Badgett III 12/21/2016 DATE
	CADD File name: 270_052_U-4715B		

21-DEC-2016 14:16  
 C:\Users\jtruff\Documents\Projects\270\_052\_U-4715B\_Ashville\11e Sig Sys\Task 11\_Typ 5D\Final Microstation Files Renamed\Volume 1 - Part 1\270\_052\_U-4715B\_ITS-5.22.dgn  
 AT LUS355195