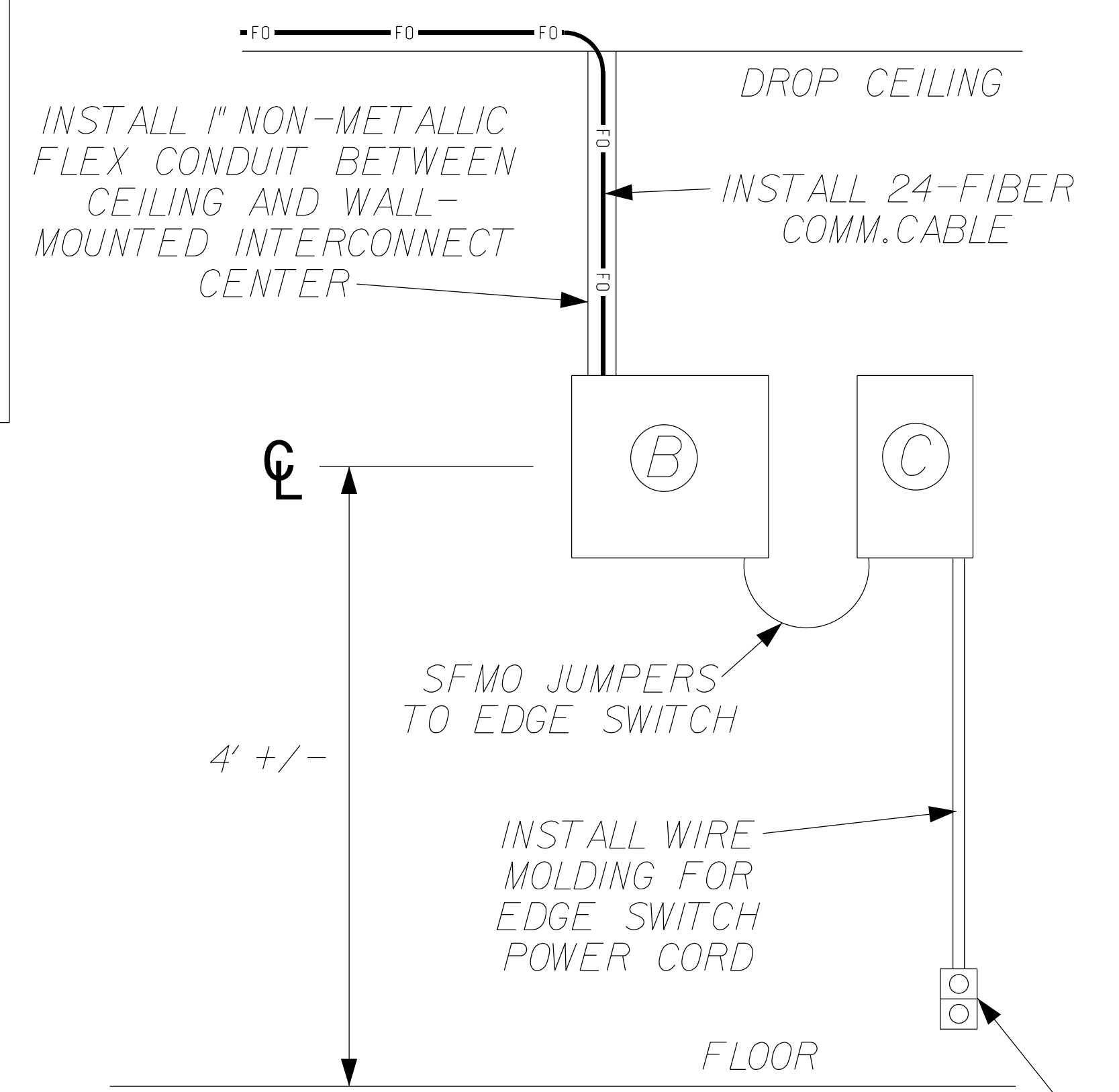


NOTES

1. CONFIRM LOCATION OF WALL-MOUNTED INTERCONNECT CENTER AND EDGE SWITCH ENCLOSURE WITH CITY TRAFFIC ENGINEER BEFORE INSTALLATION.



- (B) INSTALL WALL-MOUNTED INTERCONNECT CENTER AND TERMINATE 24-FIBER COMMUNICATIONS CABLE ON PATCH PANEL
 - (C) INSTALL ETHERNET EDGE SWITCH MOUNTED INSIDE NEMA 12 ENCLOSURE
- EXISTING WALL RECEPTACLE (OR NEW ONE INSTALLED BY CITY)

Mezzanine Plan View

21-DEC-2016, 14:16
 C:\Users\jtruff\OneDrive\Work\Projects\2016\U-4715B_Ashville\11e Sig Sys\Task 11_Typ 5D\Final Microstation Files Renamed\Volume 1 - Part 1\270_048_U-4715B ITS-5.18.dgn
 00107303 AT LUS355195

ATKINS 1616 EAST MILLBROOK ROAD, SUITE 160
 RALEIGH, NORTH CAROLINA 27609
 (919) 876-6888 NCBEES #F-0326

DOCUMENT NOT CONSIDERED FINAL UNLESS ALL SIGNATURES COMPLETED

	Asheville Signal System City Hall Cable Entry Detail 3 of 3 (Mezzanine)	
	Division 13 Buncombe County Asheville	PLAN DATE: December 2016 PREPARED BY: A MCARTHUR
N.T.S.	REVISIONS INIT. DATE	DATE