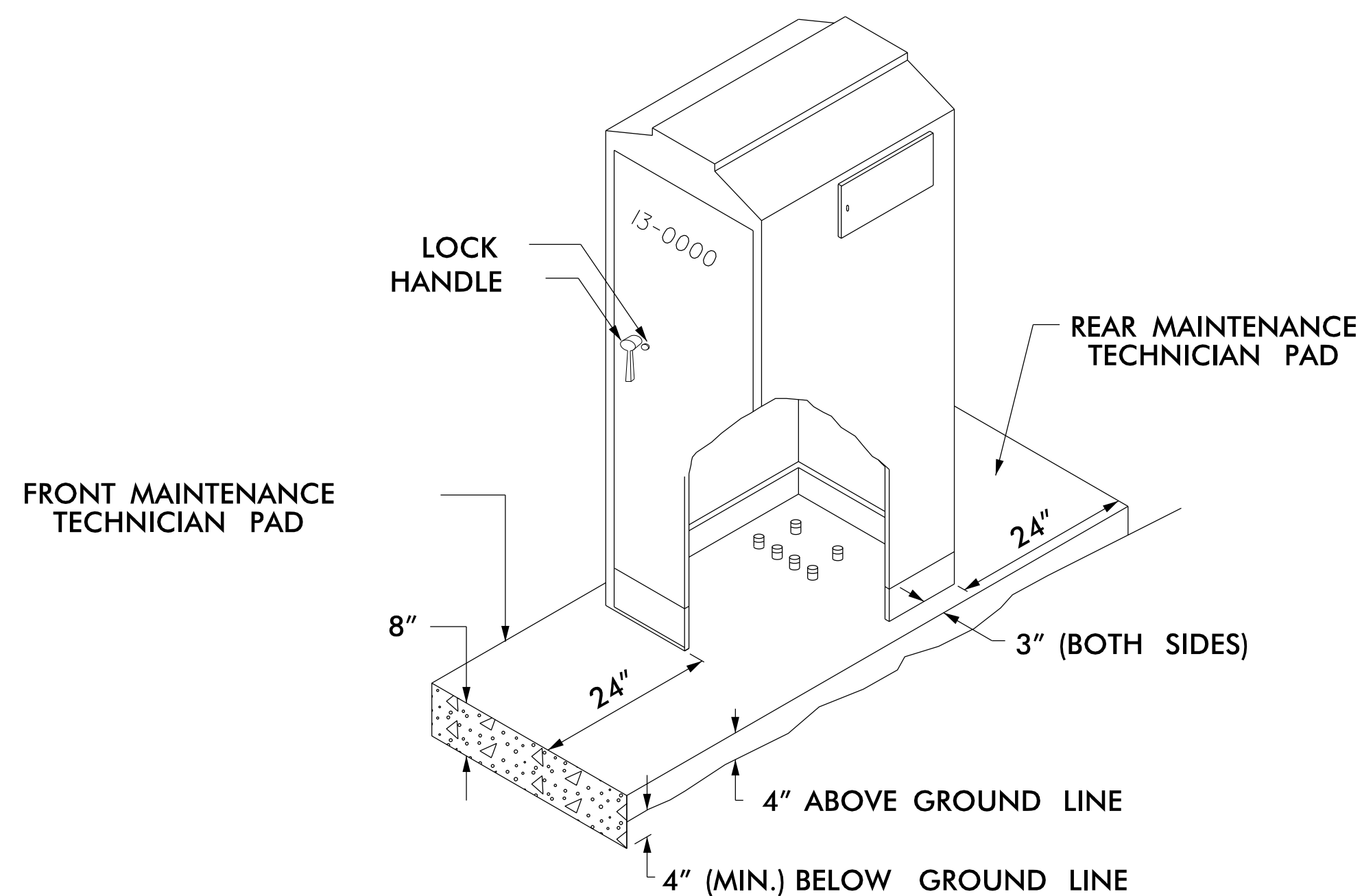
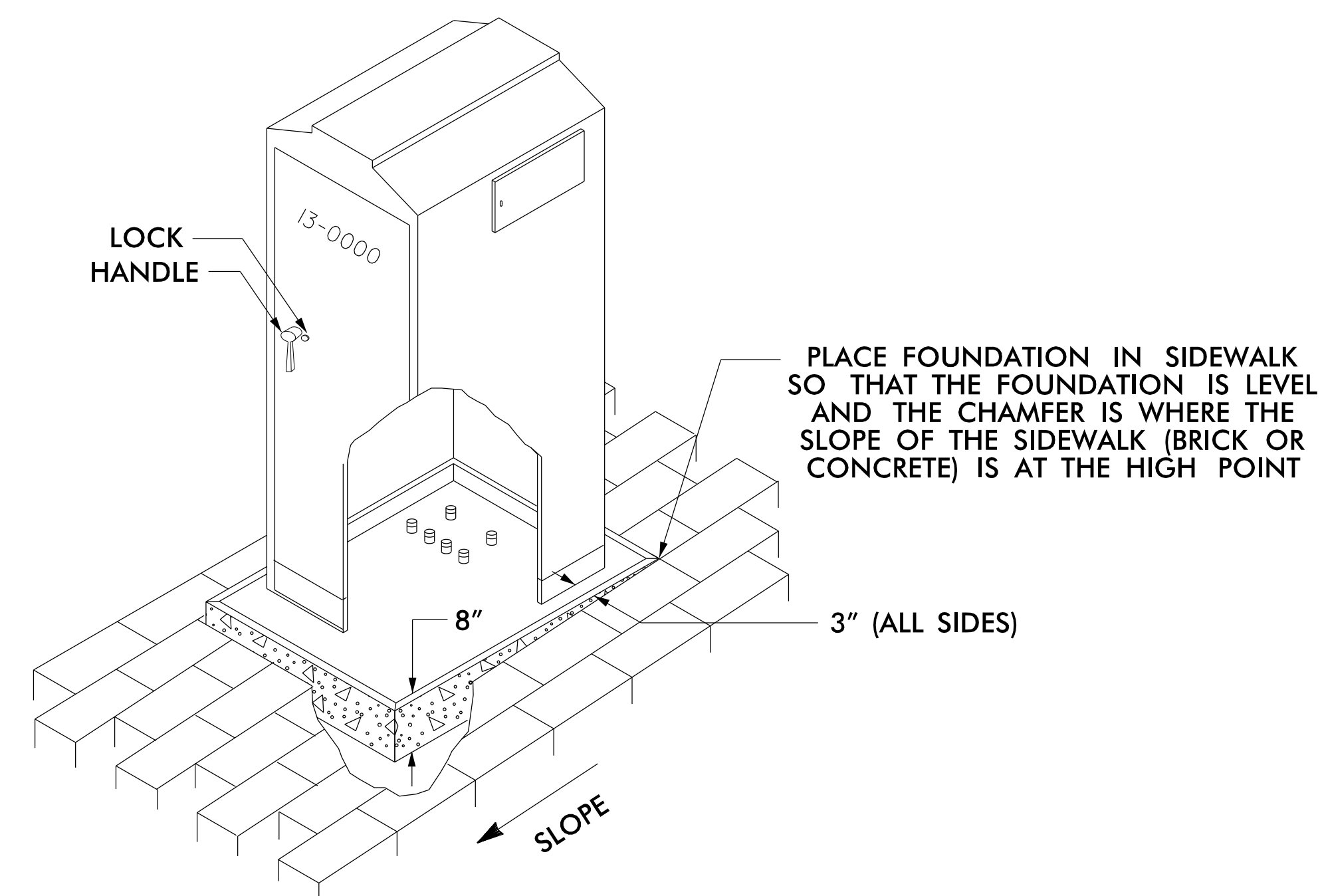


TYPICAL BASE-MOUNTED CABINET NEW STANDARD FOUNDATION



TYPICAL BASE-MOUNTED CABINET NEW FOUNDATION IN SIDEWALK



NOTES

1. STUB OUT SPARE 2" CONDUIT TO 12" BEYOND EDGE OF CABINET FOUNDATION.
2. SEAL SPARE CONDUIT WITH REMOVABLE CAP.
3. TOPS OF CONDUIT SHALL BE NO LESS THAN 2" AND NO MORE THAN 3" ABOVE FOUNDATION.

21-DEC-2016 14:15
 C:\Users\p\Documents\Projects\11_Typ_Sys\Task 11_Typ_SD\Final_Microstation_Files_Renamed\Volume 1 - Part 1\4270_039_U-4715B ITS-5.09.dgn
 AT_LUS355195

ATKINS 1616 EAST MILLBROOK ROAD, SUITE 160
 RALEIGH, NORTH CAROLINA 27609
 (919) 876-6888 NCBES #F-0326

**DOCUMENT NOT CONSIDERED FINAL
 UNLESS ALL SIGNATURES COMPLETED**

Prepared for the Offices of: Transportation 750 Greenfield Parkway, Garner, NC 27529	Asheville Signal System Base-Mounted Cabinet Foundation Details		SEAL
	Division 13 Buncombe County Asheville	PLAN DATE: December 2016 REVIEWED BY: M B Toth	
SCALE N.T.S.	PREPARED BY: A M Quigley	REVIEWED BY: J T Brooks	DEVELOPED BY: Henry Alfred Engh III 12/21/2016 DATE
REVISIONS			CADD Filename: 270_039_U-4715B