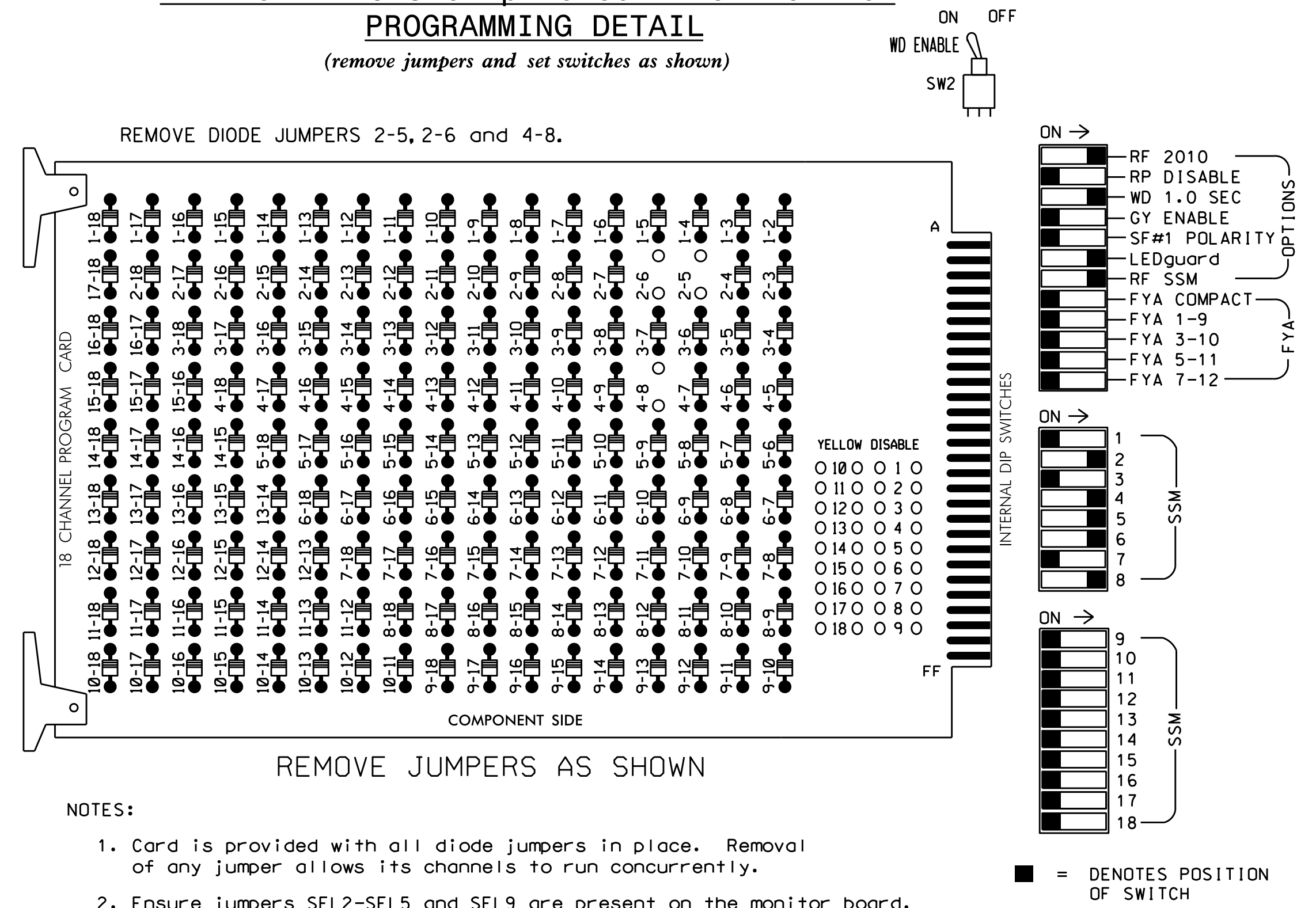


EDI MODEL 2018ECLIP-NC CONFLICT MONITOR PROGRAMMING DETAIL
(remove jumpers and set switches as shown)



- NOTES:**
- Card is provided with all diode jumpers in place. Removal of any jumper allows its channels to run concurrently.
 - Ensure jumpers SEL2-SEL5 and SEL9 are present on the monitor board.
 - Ensure that Red Enable is active at all times during normal operation.
 - Integrate monitor with Ethernet network in cabinet.

- NOTES**
- To prevent "flash-conflict" problems, insert red flash program blocks for all unused vehicle load switches in the output file. The installer shall verify that signal heads flash in accordance with the Signal Plans.
 - Program phases 4 and 8 for Dual Entry.
 - Enable Simultaneous Gap-Out for all phases.
 - Program phases 2 and 6 for Gap Reduction.
 - Program phases 2 and 6 for Start Up In Green.
 - Program phases 2 and 6 for Yellow Flash.
 - The cabinet and controller are part of the Asheville Signal System.

SIGNAL HEAD HOOK-UP CHART

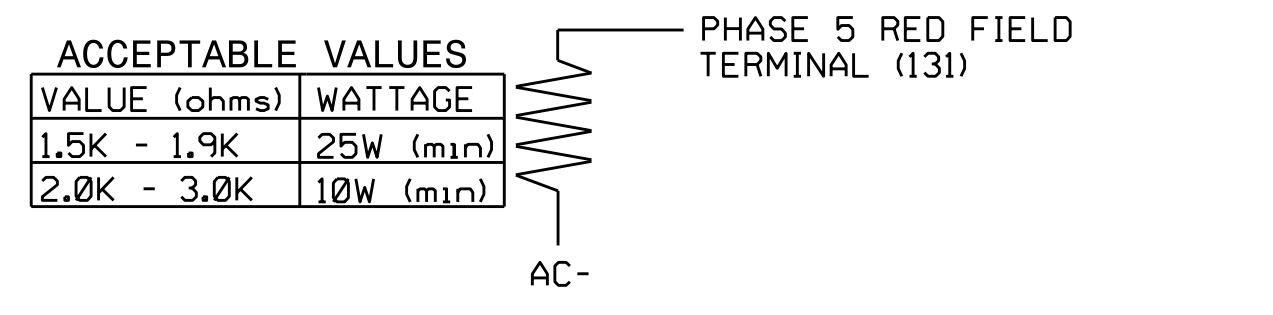
LOAD SWITCH NO.	S1	S2	S3	S4	S5	S6	S7	S8	S9	S10	S11	S12	AUX S1	AUX S2	AUX S3	AUX S4	AUX S5	AUX S6
CMU CHANNEL NO.	1	2	13	3	4	14	5	6	15	7	8	16	9	10	17	11	12	18
PHASE	1	2	2 PED	3	4	4 PED	5	6	6 PED	7	8	8 PED	OLA	OLB	SPARE	OLC	OLD	SPARE
SIGNAL HEAD NO.	NU	21,22	NU	NU	41,42	NU	21	61,62	NU	NU	81,82	NU	NU	NU	NU	NU	NU	NU
RED		128			101		*	134			107							
YELLOW		129			102			135			108							
GREEN		130			103			136			109							
RED ARROW																		
YELLOW ARROW								132										
GREEN ARROW								133										

NU = Not Used
* Denotes install load resistor. See load resistor installation detail this sheet.

EQUIPMENT INFORMATION

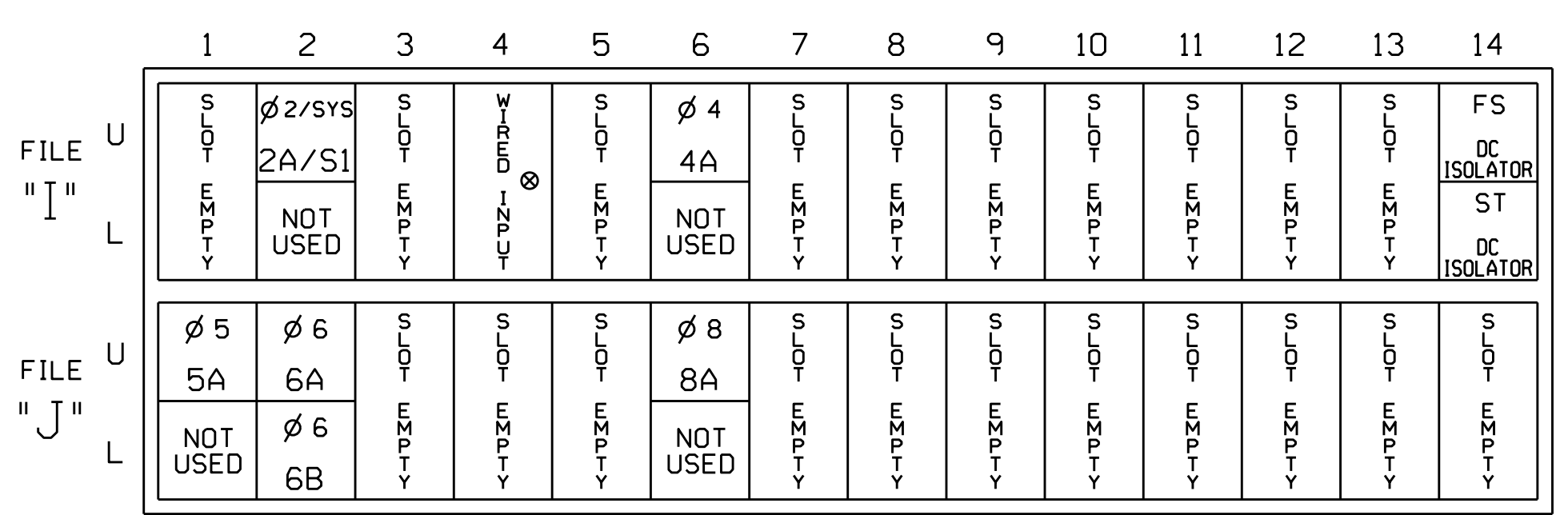
CONTROLLER.....2070E
CABINET.....332 W/ AUX
SOFTWARE.....ECONOLITE OASIS
CABINET MOUNT.....BASE
OUTPUT FILE POSITIONS...18 WITH AUX. OUTPUT FILE
LOAD SWITCHES USED.....S2,S5,S7,S8,S11
PHASES USED.....2,4,5,6,8
OVERLAPS.....NONE

LOAD RESISTOR INSTALLATION DETAIL
(install resistor as shown below)



NOTE: The purpose of this resistor is to load the channel red monitor input in order for the Signal Sequence Monitor to use the full signal sequence monitoring capability on channels that do not use the red display in the field.

INPUT FILE POSITION LAYOUT
(front view)



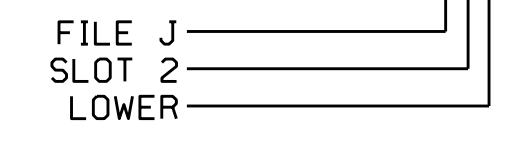
EX.: 1A, 2A, ETC. = LOOP NO.'S
FS = FLASH SENSE
ST = STOP TIME
⊗ Wired Input - Do not populate slot with detector card

INPUT FILE CONNECTION & PROGRAMMING CHART

LOOP NO.	LOOP TERMINAL	INPUT FILE POS.	PIN NO.	INPUT ASSIGNMENT NO.	DETECTOR NO.	NEMA PHASE	CALL	EXTEND	FULL TIME DELAY	STRETCH TIME	DELAY TIME
2A/S1	TB2-5,6	I2U	39	1	2	2/SYS	Y	Y			
4A	TB4-9,10	I6U	41	3	4	4	Y	Y			10
5A ¹	TB3-1,2	J1U	55	17	5	5	Y	Y			15
	-	I4U	47	9	22	2	Y	Y	Y	2.0	5
6A	TB3-5,6	J2U	40	2	6	6	Y	Y			5
6B	TB3-7,8	J2L	44	6	16	6	Y	Y	Y	2.0	5
8A	TB5-9,10	J6U	42	4	8	8	Y	Y			10

¹Add jumper from J1-W to I4-W, on rear of input file.

INPUT FILE POSITION LEGEND: J2L



BACKUP PROTECTION NOTE
(program controller as shown below)

From Main Menu press '2' (Phase Control), then '1' (Phase Control Functions). Program phase 2 for 'Backup Protect'. Make sure the Red Revert times shown on the Signal Design Plans are programmed in the 'Phase Timing' menu.

THIS ELECTRICAL DETAIL IS FOR THE SIGNAL DESIGN: 13-0581
DESIGNED: February 2016
SEALED: 8/10/2016
REVISED:

Electrical Detail

DOCUMENT NOT CONSIDERED FINAL UNLESS ALL SIGNATURES COMPLETED

Prepared In the Offices of:
TRANSPORTATION MOBILITY AND SAFETY ADMINISTRATION
SIGNAL MANAGEMENT SECTION
750 N. Greenfield Pkwy, Garner, NC 27529

US 25A (Sweeten Creek Road) at SR 3162 (Royal Pines Drive)

Division 13 Buncombe County Asheville
PLAN DATE: June 2016 REVIEWED BY: BAS
PREPARED BY: C. Strickland REVIEWED BY:

REVISIONS INIT. DATE

DocuSigned by: *Carly M. Little* 8/15/2016
DATE: 8/15/2016
SIG. INVENTORY NO. 13-0581

SEAL NORTH CAROLINA PROFESSIONAL ENGINEER SEAL 030530 JACARY M. LITTLE

I:\AUG-2016_10561
 S:\IT\SAS\115\Sigmod\work\hgr\oas\51g_Maps\5111\ck\lanch\30581_sml_e_xxx.dgn
 cbsr\ckland