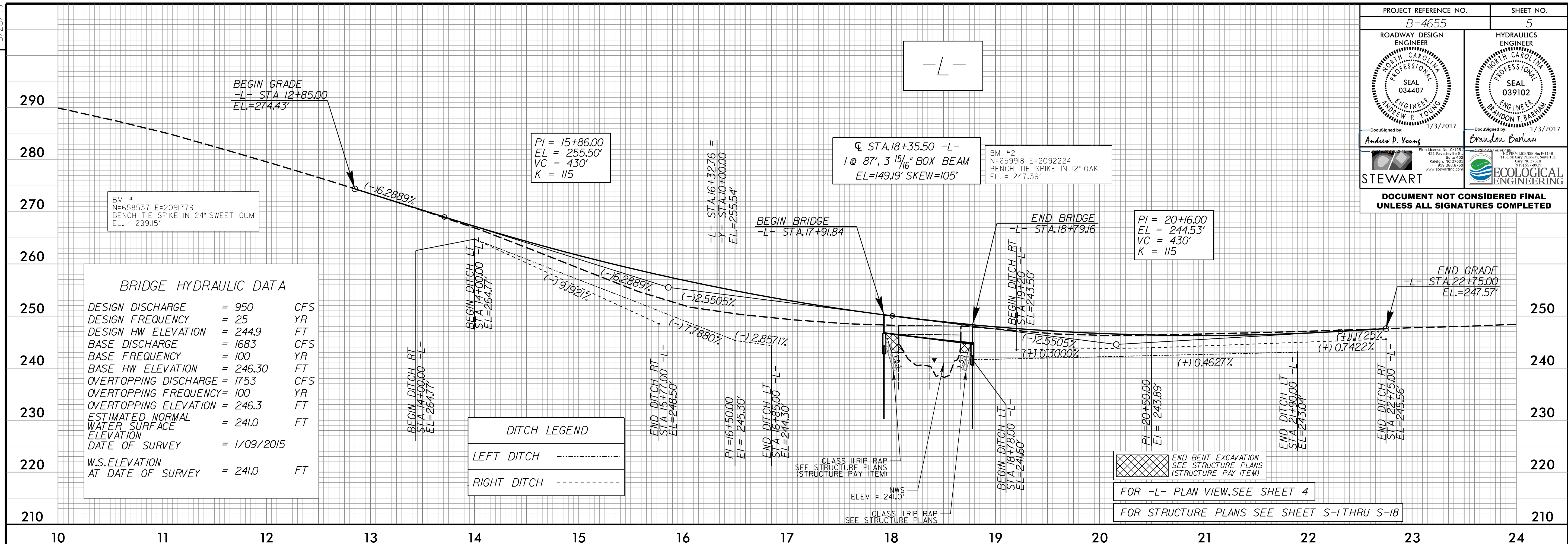


PROJECT REFERENCE NO. B-4655	SHEET NO. 5
ROADWAY DESIGN ENGINEER ANDREW P. YOUNG PROFESSIONAL SEAL 034407 1/3/2017	HYDRAULICS ENGINEER BRANDON T. BARHAM PROFESSIONAL SEAL 039102 1/3/2017
DocuSigned by: Andrew P. Young	DocuSigned by: Brandon Barham
STEWART	ECOLOGICAL ENGINEERING
DOCUMENT NOT CONSIDERED FINAL UNLESS ALL SIGNATURES COMPLETED	



BRIDGE HYDRAULIC DATA

DESIGN DISCHARGE	= 950	CFS
DESIGN FREQUENCY	= 25	YR
DESIGN HW ELEVATION	= 244.9	FT
BASE DISCHARGE	= 1683	CFS
BASE FREQUENCY	= 100	YR
BASE HW ELEVATION	= 246.30	FT
OVERTOPPING DISCHARGE	= 1753	CFS
OVERTOPPING FREQUENCY	= 100	YR
OVERTOPPING ELEVATION	= 246.3	FT
ESTIMATED NORMAL WATER SURFACE ELEVATION	= 241.0	FT
DATE OF SURVEY	= 1/09/2015	
W.S. ELEVATION AT DATE OF SURVEY	= 241.0	FT

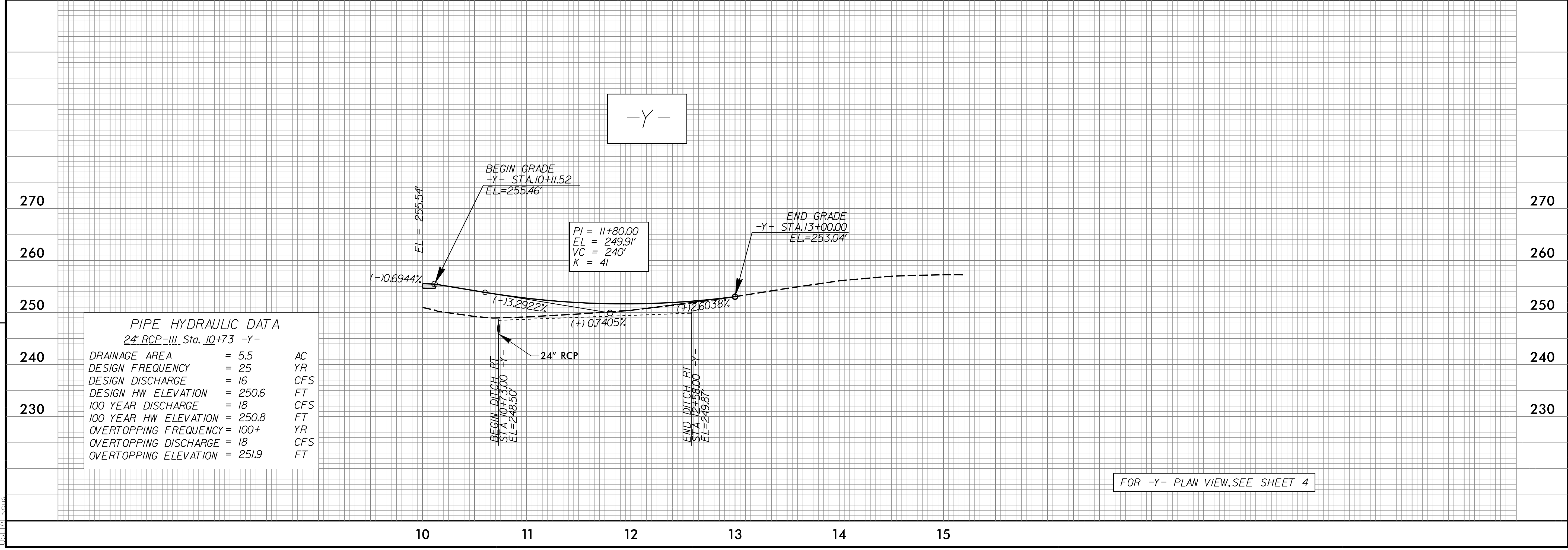
DITCH LEGEND

LEFT DITCH	-----
RIGHT DITCH	-----

PIPE HYDRAULIC DATA

24" RCP-III, Sta. 10+73 -Y-

DRAINAGE AREA	= 5.5	AC
DESIGN FREQUENCY	= 25	YR
DESIGN DISCHARGE	= 16	CFS
DESIGN HW ELEVATION	= 250.6	FT
100 YEAR DISCHARGE	= 18	CFS
100 YEAR HW ELEVATION	= 250.8	FT
OVERTOPPING FREQUENCY	= 100+	YR
OVERTOPPING DISCHARGE	= 18	CFS
OVERTOPPING ELEVATION	= 251.9	FT



FOR -Y- PLAN VIEW, SEE SHEET 4

5/28/99
1/3/2017 B4655_P05_PSH_05.dgn
REVISIONS
1/3/2017 B4655_P05_PSH_05.dgn