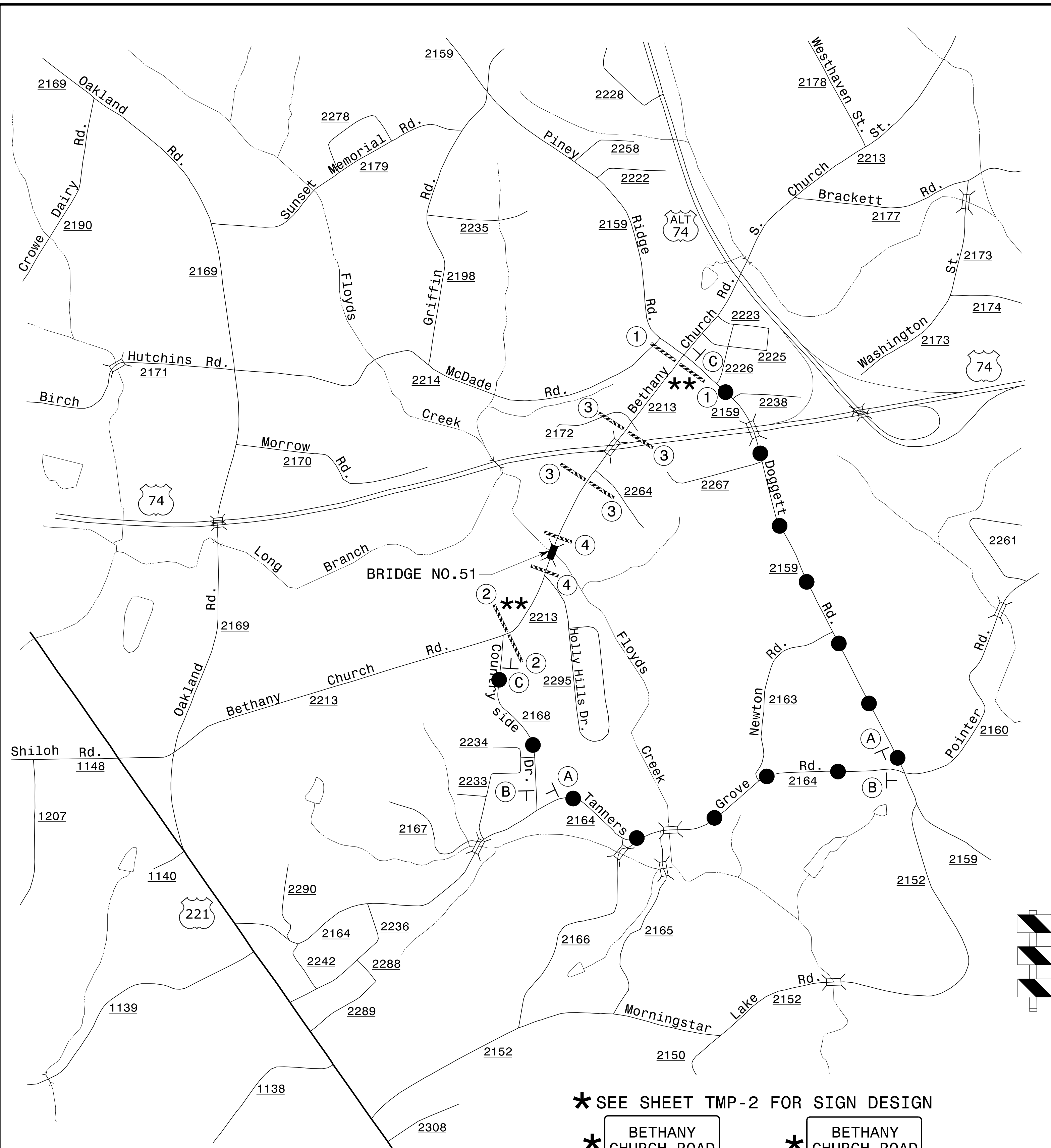


# TEMPORARY TRAFFIC CONTROL PHASING

NOTE: BEFORE BEGINNING CONSTRUCTION THE CONTRACTOR SHALL PLACE ADVANCE WORK ZONE WARNING SIGNS ALONG HOLLY HILLS DR. AND WHISPERING PINES DR., (SEE RSD 1101.01, SHEET 3 OF 3)

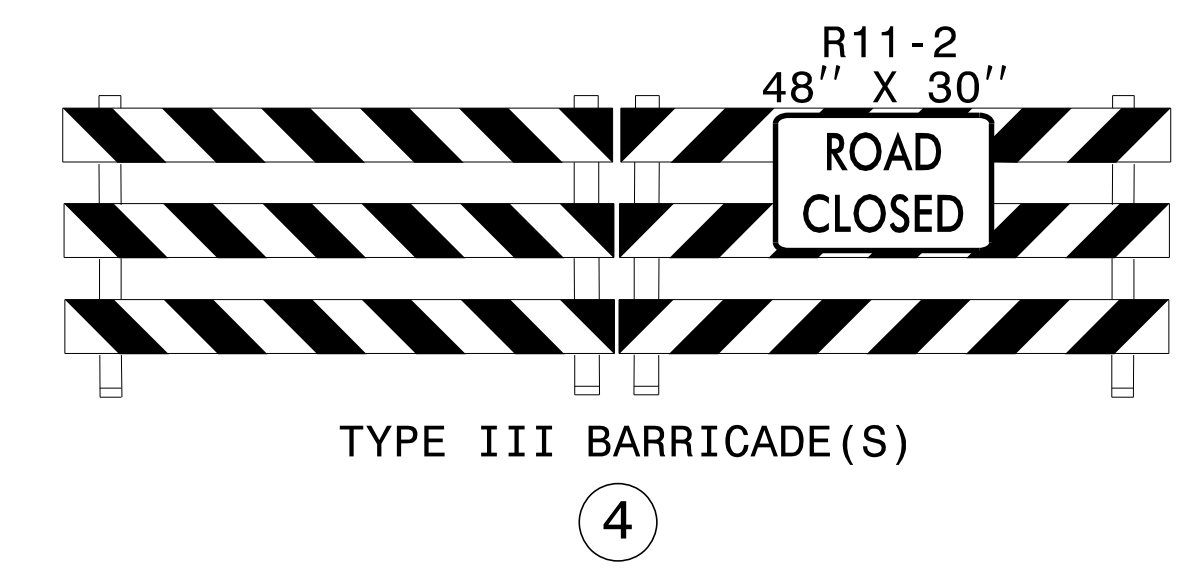
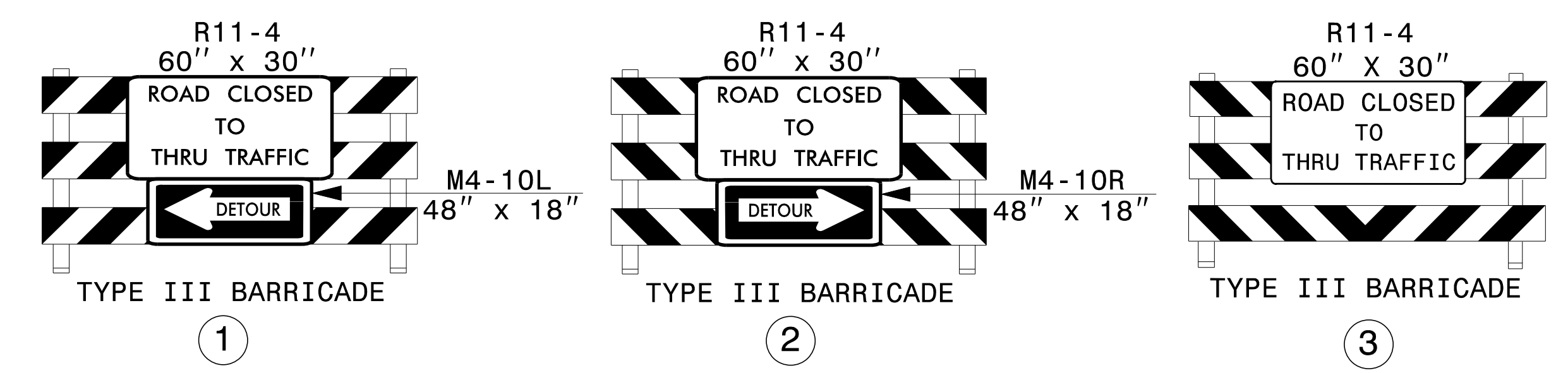


### PHASE I

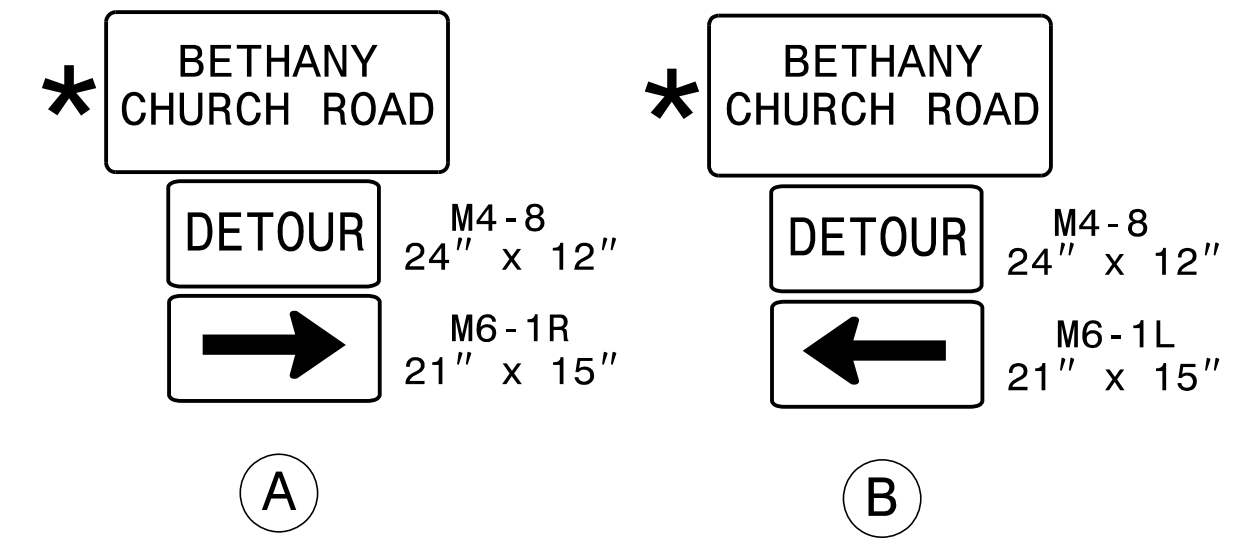
- STEP 1. INSTALL ALL OFF-SITE DETOUR SIGNING (SEE TMP-3).
- USING RSD 1101.03 (SHEET 1 OF 9), CLOSE SR 2213 (BETHANY CHURCH RD.) FROM STA. 13+80+/- -L- TO STA. 17+00+/- -L-.

### PHASE II

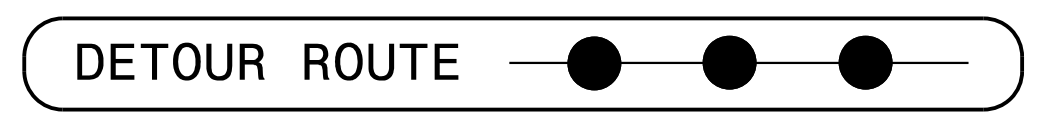
- STEP 1. AWAY FROM TRAFFIC, REMOVE EXISTING BRIDGE. CONSTRUCT NEW BRIDGE AND ROADWAY APPROACHES, DRAINAGE, GUARDRAIL, AND PAVE UP TO BUT NOT INCLUDING THE FINAL LAYER OF SURFACE COURSE AS FOLLOWS (SEE CONSTRUCTION PLANS):
- STA. 13+80+/- -L- TO STA. 17+00+/- -L-
  - USING FLAGGERS AS NECESSARY, CONSTRUCT -L- LINE, -DR1-, AND -DR2- UP TO BUT NOT INCLUDING THE FINAL LAYER OF SURFACE COURSE AS FOLLOWS:
    - STA. 17+00+/- -L- TO STA. 17+30+/- -L-
    - STA. 10+11+/- -DR1- TO STA. 11+00+/- -DR1-
    - STA. 10+00+/- -DR2- TO STA. 10+80+/- -DR2-
  - USING FLAGGERS AS NECESSARY, WIDEN -L- LINE UP TO BUT NOT INCLUDING THE FINAL LAYER OF SURFACE COURSE AS FOLLOWS:
    - STA. 12+40+/- -L- TO STA. 13+80+/- -L-
    - STA. 17+30+/- -L- TO STA. 19+00+/- -L-
  - MAINTAIN ACCESS TO ALL DRIVEWAYS AT ALL TIMES.
- STEP 2. USING RSD 1101.02 (SHEET 1 OF 15), PAVE THE FINAL LAYER OF SURFACE COURSE AS FOLLOWS (SEE CONSTRUCTION PLANS):
- STA. 12+40+/- -L- TO STA. 19+00+/- -L-
  - USING RSD 1101.02 (SHEET 1 OF 15), PLACE FINAL PAVEMENT MARKINGS AND MARKERS (SEE FINAL PAVEMENT MARKING PLAN).
- STEP 3. REMOVE ALL TYPE III BARRICADES AND DETOUR SIGNING. REOPEN SR 2213 (BETHANY CHURCH ROAD) TO A 2-LANE, 2-WAY TRAFFIC PATTERN.



\* SEE SHEET TMP-2 FOR SIGN DESIGN



\*\* SEE RSD 1101.03, SHEET 1 OF 9, FOR ADDITIONAL WORK ZONE SIGNS AND LOCATIONS



APPROVED: *Don A. Parker*  
0404282619410...  
 DATE: 11/21/2016

TEMPORARY TRAFFIC CONTROL PHASING AND OFF-SITE DETOUR BETHANY CHURCH ROAD SR 2213