

I HEREBY CERTIFY THESE PLANS ARE THE AS-BUILT PLANS

HORIZONTAL CURVE DATA -L-

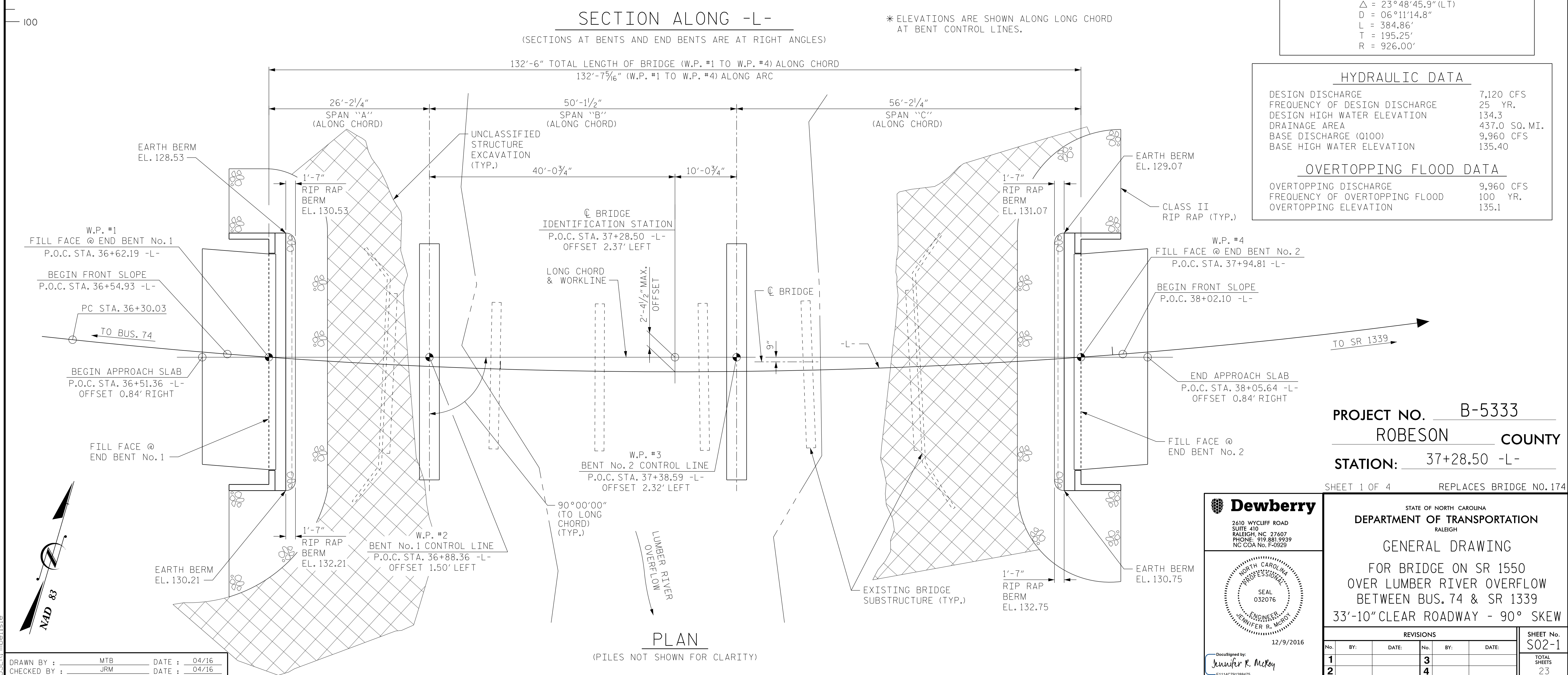
PI STA.	38+25.28
Δ	23°48'45.9" (LT)
D	06°11'14.8"
L	384.86'
T	195.25'
R	926.00'

HYDRAULIC DATA

DESIGN DISCHARGE	7,120 CFS
FREQUENCY OF DESIGN DISCHARGE	25 YR.
DESIGN HIGH WATER ELEVATION	134.3
DRAINAGE AREA	437.0 SQ. MI.
BASE DISCHARGE (Q100)	9,960 CFS
BASE HIGH WATER ELEVATION	135.40

OVERTOPPING FLOOD DATA

OVERTOPPING DISCHARGE	9,960 CFS
FREQUENCY OF OVERTOPPING FLOOD	100 YR.
OVERTOPPING ELEVATION	135.1



PROJECT NO. B-5333
ROBESON COUNTY
STATION: 37+28.50 -L-
SHEET 1 OF 4 REPLACES BRIDGE NO. 174

Dewberry
2610 WYCLIFF ROAD
SUITE 410
RALEIGH, NC 27607
PHONE: 919.881.9939
NC COA No. F-0929

12/9/2016

DocuSigned by:
Jennifer R. McRoy
E1114079128475

STATE OF NORTH CAROLINA
DEPARTMENT OF TRANSPORTATION
RALEIGH

GENERAL DRAWING
FOR BRIDGE ON SR 1550
OVER LUMBER RIVER OVERFLOW
BETWEEN BUS. 74 & SR 1339
33'-10" CLEAR ROADWAY - 90° SKEW

REVISIONS					
No.	BY:	DATE:	No.	BY:	DATE:
1			3		
2			4		

SHEET No. **S02-1**
TOTAL SHEETS 23

6/16/2016 10:05:52 AM GPE.dgn
USER: mdelisle

Drawn by: MTB DATE: 04/16
Checked by: JRM DATE: 04/16