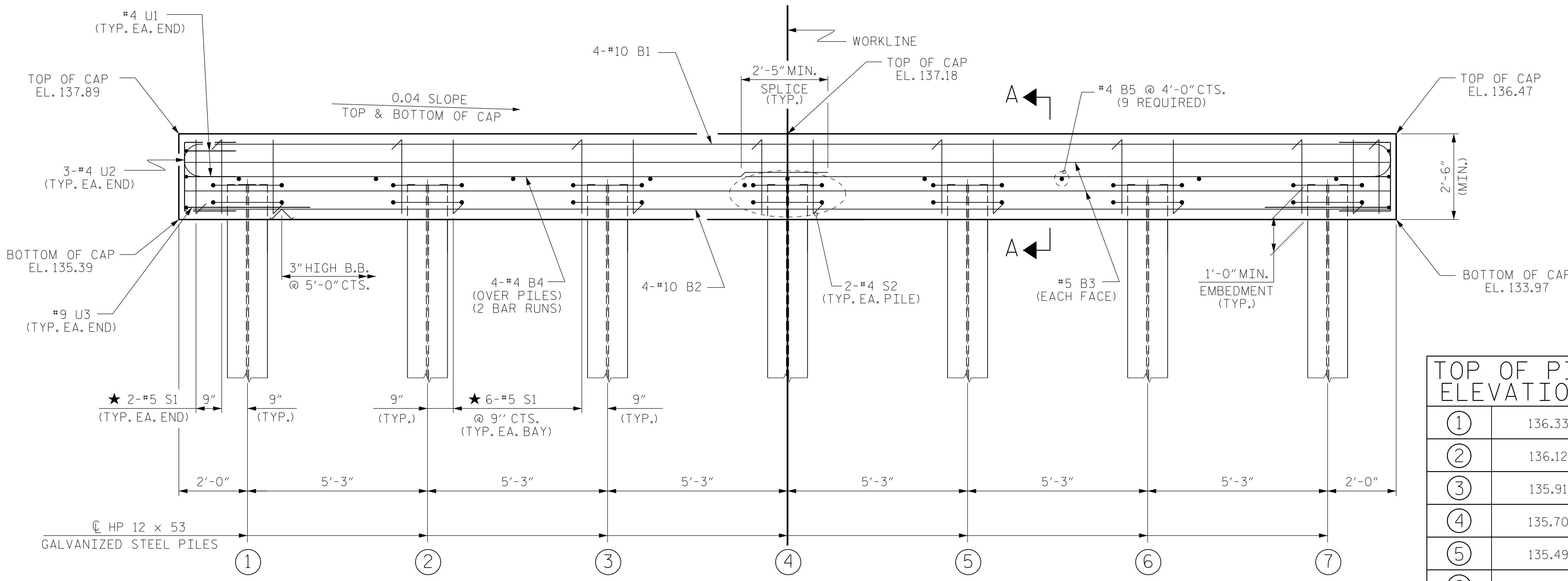
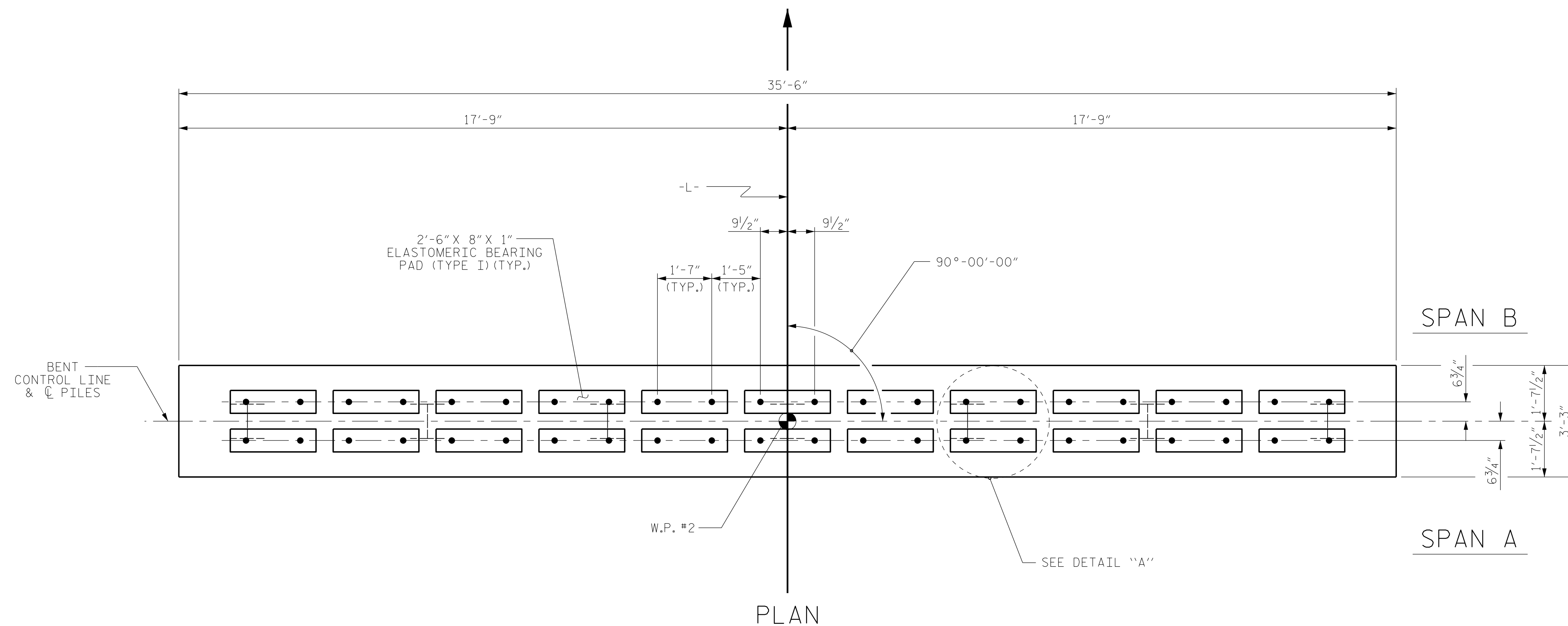
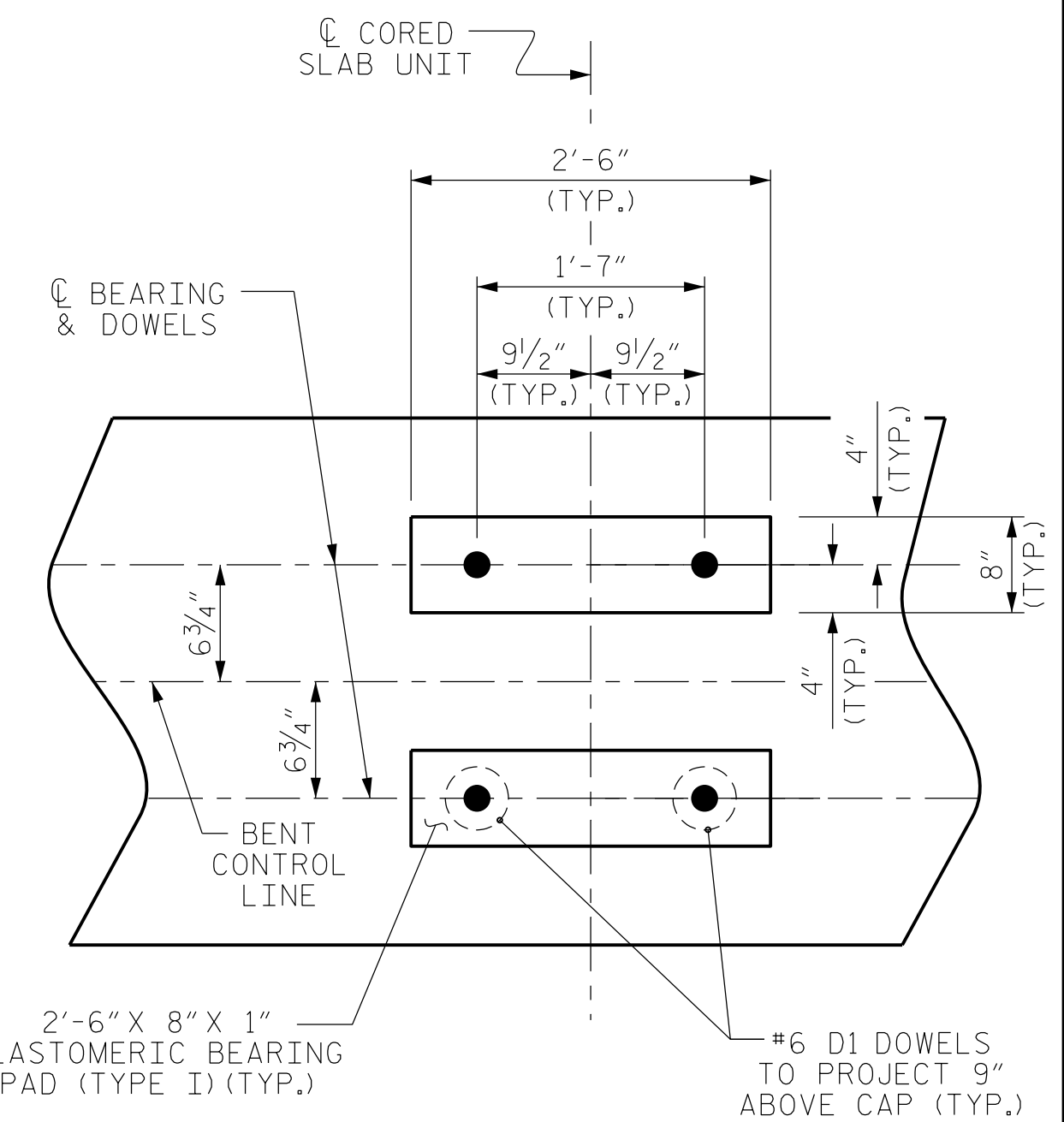


NOTES

- STIRRUPS IN CAP MAY BE SHIFTED AS NECESSARY TO CLEAR DOWELS.
- ★ INVERT ALTERNATE STIRRUPS.
- GALVANIZE THE TOP OF EACH INTERIOR BENT PILE A MINIMUM OF 26 FEET, GALVANIZE IN ACCORDANCE WITH SECTION 1076 OF THE STANDARD SPECIFICATIONS.



TOP OF PILE ELEVATIONS	
①	136.33
②	136.12
③	135.91
④	135.70
⑤	135.49
⑥	135.28
⑦	135.07



DETAIL "A"
(DIMENSIONS ARE TYPICAL EACH BEARING)

PROJECT NO. B-5333
ROBESON COUNTY
 STATION: 21+57.00 -L-
 SHEET 1 OF 2 BRIDGE NO. 173

Dewberry
 2610 WYCLIFF ROAD
 SUITE 410
 RALEIGH, NC 27607
 PHONE: 919.881.9939
 NC COA No. F-0929

SEAL
 032076
 ENGINEER
 JENNIFER R. MCDY

DocuSigned by:
 Jennifer R. Mcdy 6/6/2016
 E1114C791288475...

STATE OF NORTH CAROLINA
DEPARTMENT OF TRANSPORTATION
 RALEIGH

SUBSTRUCTURE
 BENT No. 1

REVISIONS					
No.	BY:	DATE:	No.	BY:	DATE:
1			3		
2			4		

SHEET No.
S01-13
 TOTAL SHEETS
 24

6/2/2016 8:05:58 AM 173_BENT1-1.dgn
 USER: mcdy

DRAWN BY : MTB DATE : 04/16
 CHECKED BY : JRM DATE : 04/16

ELEVATION
 FOR SECTION A-A, SEE SHEET 2 OF 2