

WATER LINES OWNED BY ROBESON COUNTY

PREPARED IN THE OFFICE OF:



THE WOOTEN COMPANY
ENGINEERING | PLANNING | ARCHITECTURE
120 North Robeson Avenue, Raleigh, NC 27603-1423
919.876.0311 | 919.876.0309
License Number: F-0115

PROJECT REFERENCE NO.

B-5333

SHEET NO.

UC-4

DESIGNED BY: JRG

DRAWN BY: TK

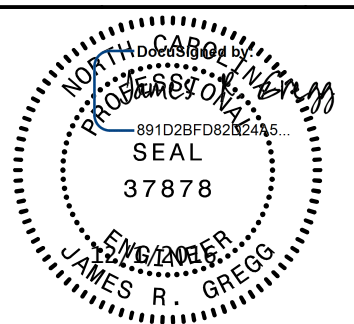
CHECKED BY: JRG

APPROVED BY: JRG

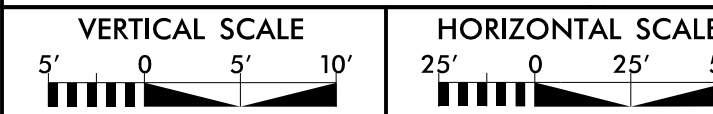
REVISED:

**NORTH CAROLINA
DEPARTMENT OF
TRANSPORTATION**

UTILITIES ENGINEERING SEC.
PHONE: (919) 707-6690
FAX: (919) 250-4151



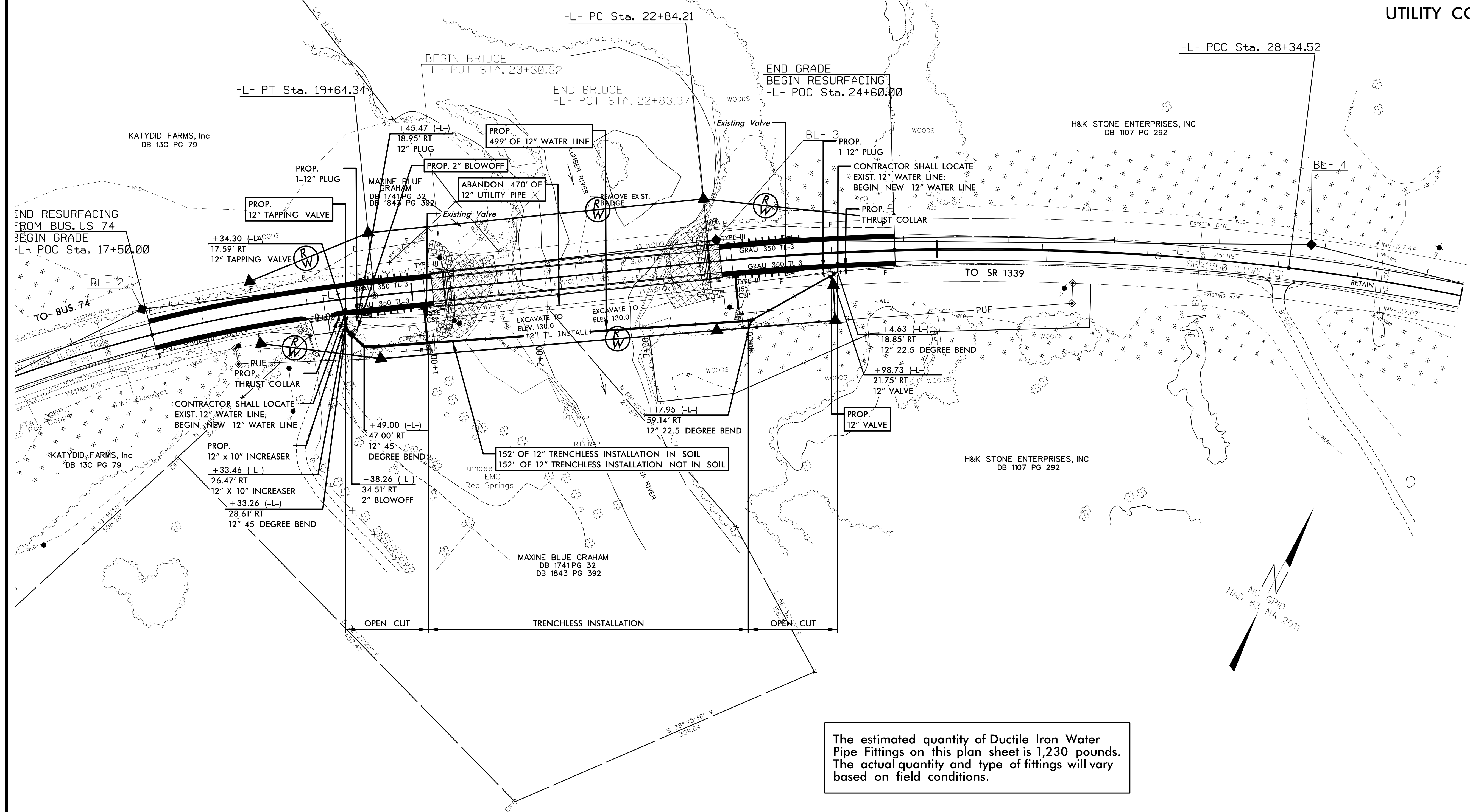
Document Not Considered Final
Unless All Signatures Completed
UTILITY CONSTRUCTION
PLANS ONLY



**ONLY WATER LINE CONSTRUCTION
SHOWN ON THIS SHEET**

UTILITY CONSTRUCTION

30



The estimated quantity of Ductile Iron Water Pipe Fittings on this plan sheet is 1,230 pounds. The actual quantity and type of fittings will vary based on field conditions.

**PROPOSED BRIDGE REPLACEMENT SHOWN IN
BACKGROUND FOR REFERENCE PURPOSES ONLY**