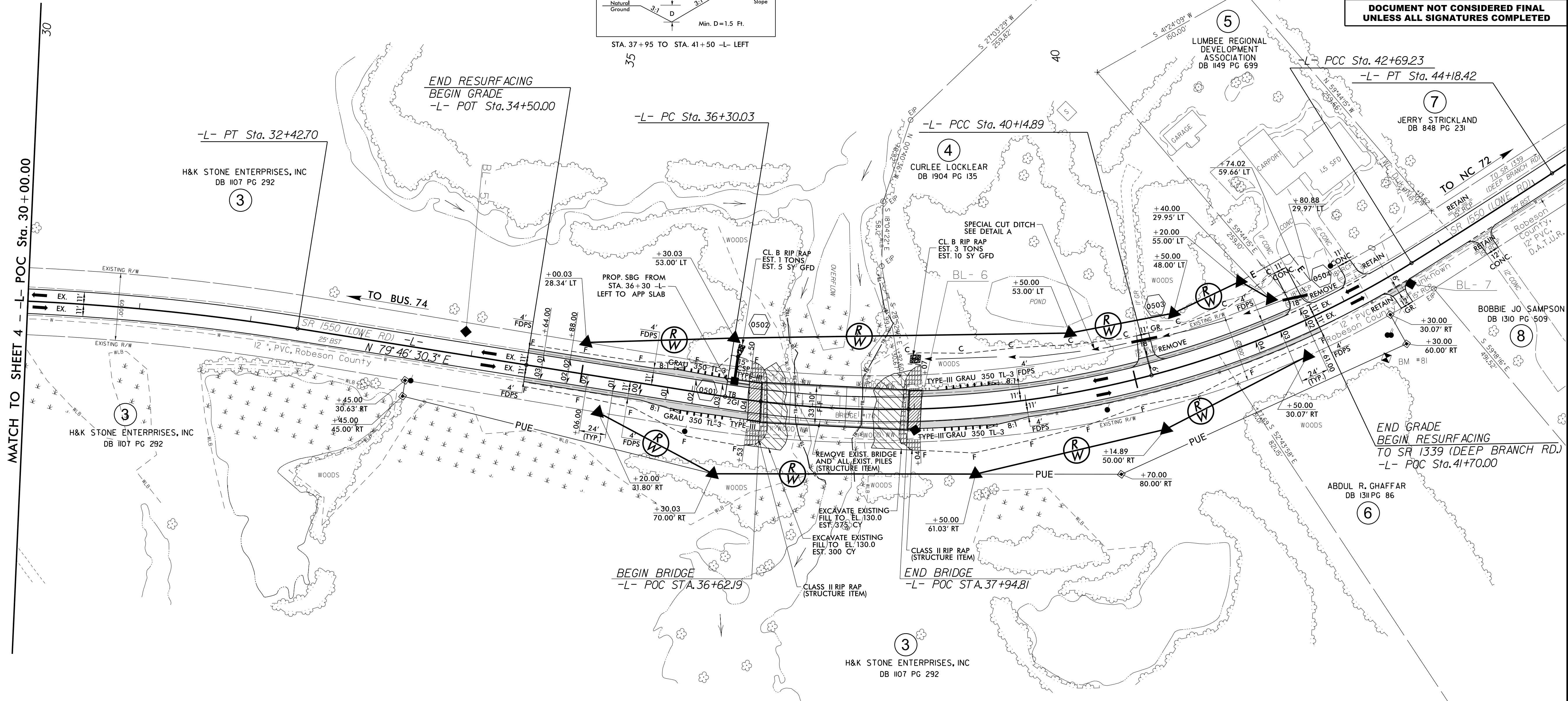
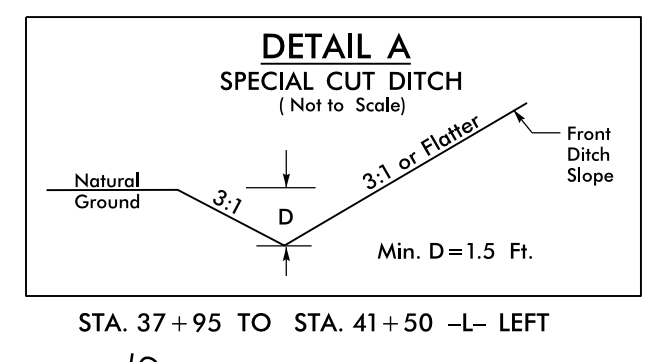


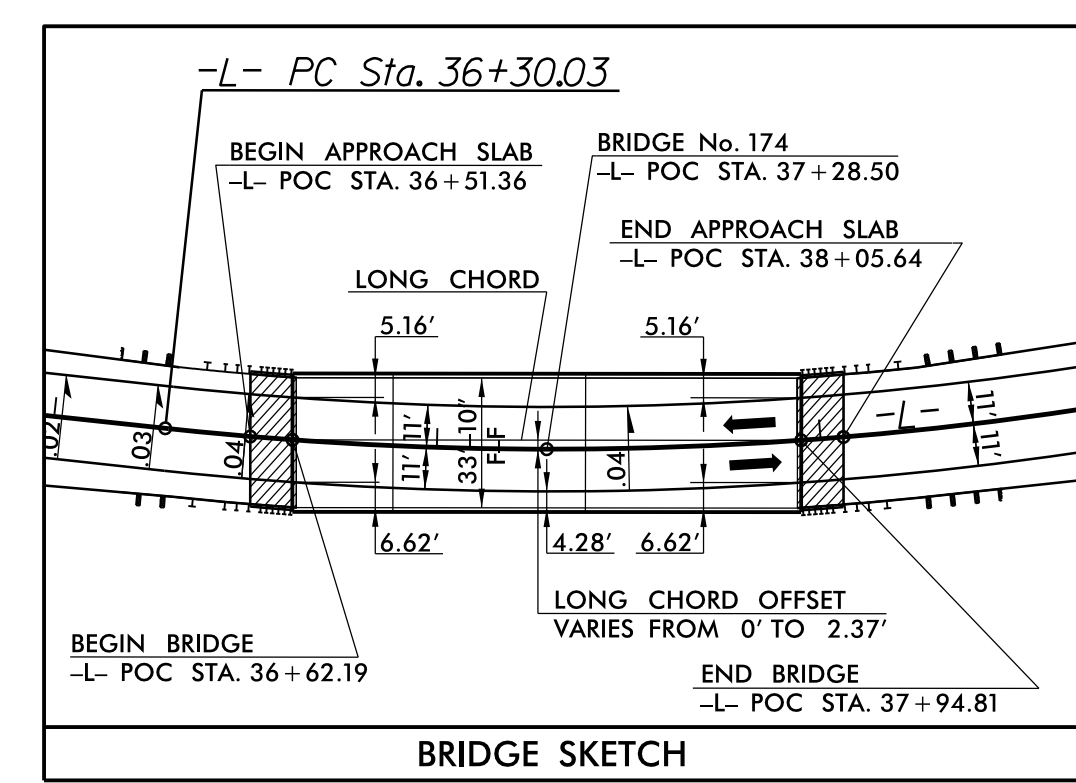
PROJECT REFERENCE NO. B-5333		SHEET NO. 5	
RW SHEET NO.			
ROADWAY DESIGN ENGINEER	HYDRAULICS ENGINEER		
2/9/2017	2/9/2017		
DOCUMENT NOT CONSIDERED FINAL UNLESS ALL SIGNATURES COMPLETED			



MATCH TO SHEET 4 -L- POC Sta. 30+00.00

CURVE DATA FOR -L-

PI Sta 30+39.23 Δ = 10° 55' 52.5" (RT) D = 2' 40' 40.9" L = 408.18' T = 204.71' R = 2,139.47' SE = MATCH EXIST.	PI Sta 38+25.28 Δ = 23° 48' 45.9" (LT) D = 6' 11' 14.8" L = 384.86' T = 195.25' R = 926.00' (50 MPH) SE = .04 RUNOFF = 96.00'	PI Sta 41+43.02 Δ = 17° 10' 04.6" (LT) D = 6' 45' 00.0" L = 254.34' T = 128.13' R = 848.83' (EX. -45 MPH) SE = .04 RUNOFF = 96.00'	PI Sta 43+43.83 Δ = 1° 13' 57.4" (LT) D = 0' 49' 34.3" L = 149.19' T = 74.60' R = 6,934.92' SE = MATCH EXIST.
---	--	---	---



NOTES:

- FIELD ADJUSTMENT AS NEEDED FOR TYPE III ANCHOR UNITS.
- ALL DRIVEWAY RADII ARE 10' UNLESS OTHERWISE NOTED.

UNCLASSIFIED STRUCTURE EXCAVATION

SEE SHEET 7 FOR -L- PROFILE
SEE SHEETS S02-1 THRU S02-23 FOR STRUCTURE PLANS