

**This electronic collection of documents is provided
for the convenience of the user
and is Not a Certified Document –**

**The documents contained herein were originally issued
and sealed by the individuals whose names and license
numbers appear on each page, on the dates appearing
with their signature on that page.**

**This file or an individual page
shall not be considered a certified document.**

I3-FEB-2017 15:04 S:\DDC\District\Gaston\I-5894-I-85 MM22 to Countyline\I-5894-Interstate_Maint_Gaston_2017\I-5894-Interstate_Maintenance_2017_Gaston\RDY_Plans\I-5894_Rdy_Tsh.dgn
 \$\$\$USERNAME\$\$\$

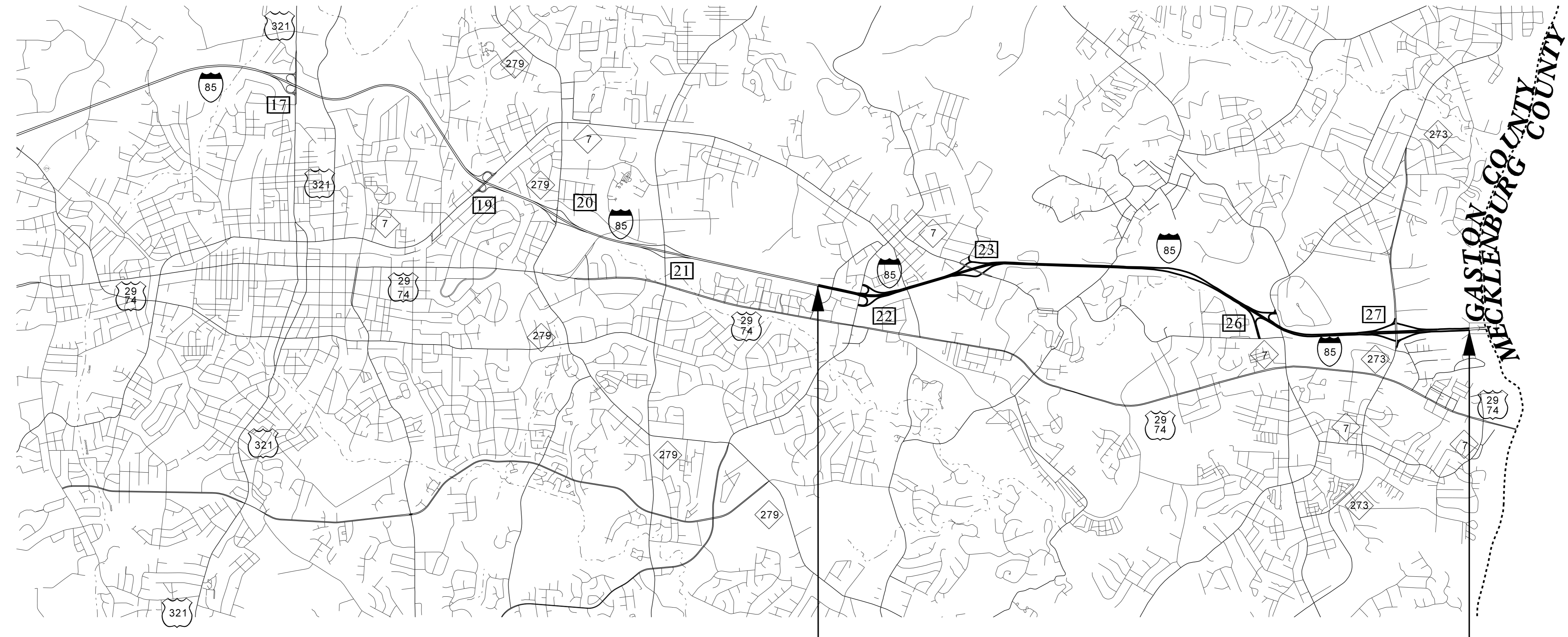
CONTRACT: C203934 **TIP PROJECT: I-5894**

STATE OF NORTH CAROLINA
DIVISION OF HIGHWAYS

GASTON COUNTY

**LOCATION: I-85 -L- LINE AND RAMPS MILE MARKER 22
TO BRIDGE OVER CATAWBA RIVER (MECKLENBURG COUNTY)**

STATE	STATE PROJECT REFERENCE NO.	SHEET NO.	TOTAL SHEETS
N.C.	I-5894	1	
STATE PROJ. NO.	F.A. PROJ. NO.	DESCRIPTION	
46436.1.1	NHPIM-0085(031)	PE	
46436.3.1	NHPIM-0085(031)	CONST.	



**BEGIN PROJECT I-5894
MILE MARKER 22**

**END PROJECT I-5894
BRIDGE OVER CATAWBA RIVER**

PROJECT LENGTH

LENGTH ROADWAY TIP PROJECT I-5894 = 5.6 MI

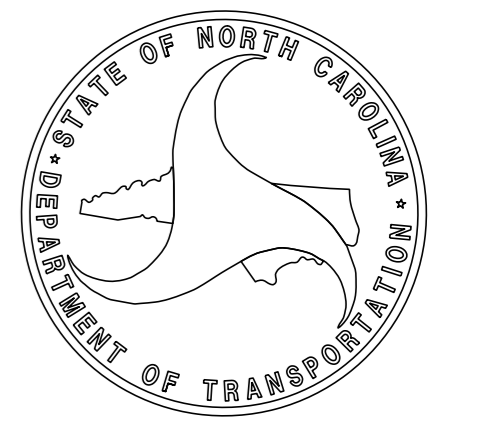
Prepared in the Office of:
DIVISION OF HIGHWAYS
1710 EAST MARION ST., SHELBY NC 28151

2012 STANDARD SPECIFICATIONS

LETTING DATE:
MARCH 21, 2017

C.G. GURLEY, PE
DIVISION MAINTENANCE ENGINEER

B.K. SOWELL, PE
PROJECT DESIGN ENGINEER



INDEX OF SHEETS

SHEET NUMBER	SHEET
1	TITLE SHEET
1A	INDEX OF SHEETS, GENERAL NOTES, AND STANDARD DRAWINGS
2A-1	PAVEMENT SCHEDULE AND TYPICAL SECTIONS
2B-1	ROADWAY DETAILS
2C-1	STRUCTURE ANCHOR UNIT TYPE B-77
3B-1	GUARDRAIL SUMMARY
3B-2	SUMMARY OF QUANTITIES
TMP-1 THRU TMP-12	TRAFFIC MANAGEMENT PLANS
EC-1 THRU EC-2	EROSION CONTROL PLANS
SIG-1	SIGNAL LOOP DETAILS
S-1 THRU S-27	STRUCTURE SHEETS
SN	STRUCTURE STANDARD NOTES

GENERAL NOTES:

2012 SPECIFICATIONS
EFFECTIVE: 01-17-2012
REVISED: 10-31-2014

GUARDRAIL:

THE GUARDRAIL LOCATIONS SHOWN ON THE PLANS MAY BE ADJUSTED DURING CONSTRUCTION AS DIRECTED BY THE ENGINEER. THE CONTRACTOR SHOULD CONSULT WITH THE ENGINEER PRIOR TO ORDERING GUARDRAIL MATERIAL.

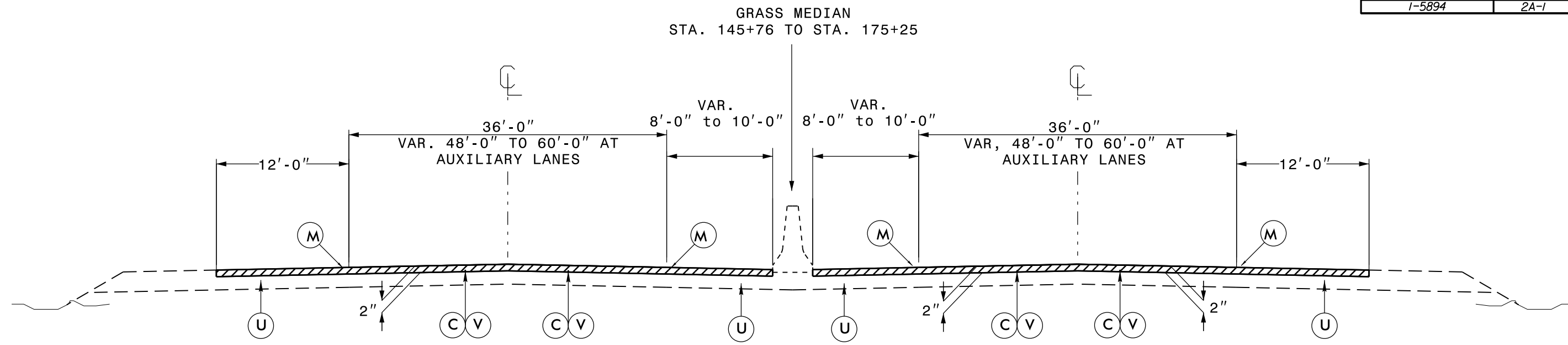
EFF. 01-17-2012
REV. 10-30-2012

2012 ROADWAY ENGLISH STANDARD DRAWINGS

The following Roadway Standards as appear in "Roadway Standard Drawings" Highway Design Branch - N. C. Department of Transportation - Raleigh, N. C., Dated January, 2012 are applicable to this project and by reference hereby are considered a part of these plans:

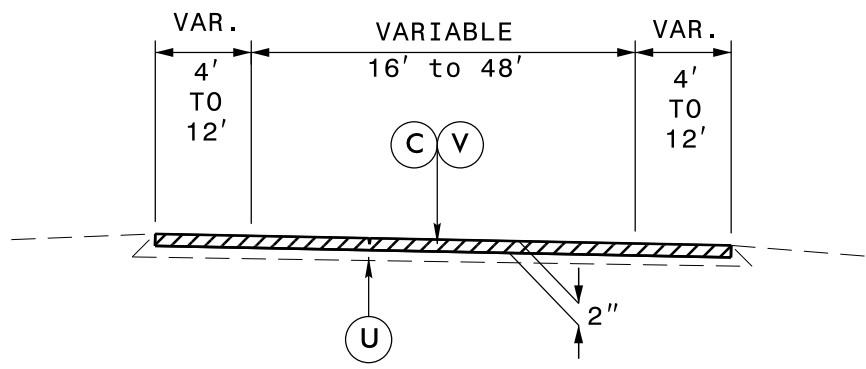
STD.NO.	TITLE
DIVISION 1 - SUBGRADE, BASES AND PAVEMENTS	
560.02	Method of Shoulder Construction - High Side of Superelevated Curve - Method II (Sheet 2 of 3 is no longer applicable)
DIVISION 6 - ASPHALT BASES AND PAVEMENTS	
665.01	Asphalt Shoulders - Milled Rumble Strips
DIVISION 8 - INCIDENTALS	
862.02	Guardrail Installation
862.03	Structure Anchor Units
862.04	Anchoring End of Guardrail - B-77 and B-83 Anchor Units

5/14/99



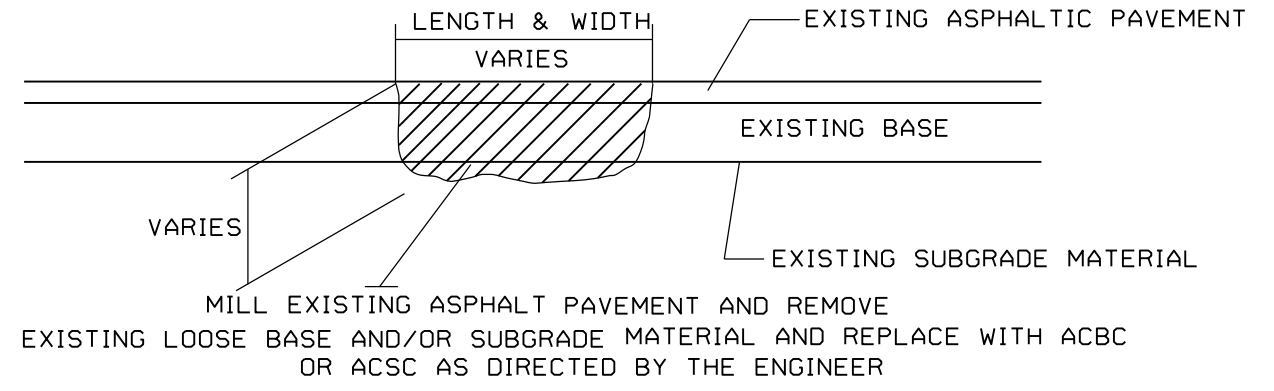
TYPICAL SECTION NO. 1

USE TYPICAL SECTION NO. 1
FROM MILE MARKER 22 TO
BEGIN BRIDGE OVER CATAWBA RIVER

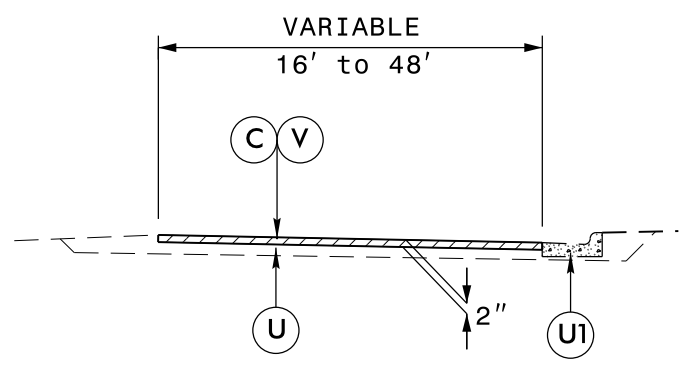


TYPICAL SECTION NO. 2

USE TYPICAL SECTION NO. 2 FOR:
RAMPS AND LOOPS WITH SHOULDERS



PATCHING EXISTING PAVEMENT

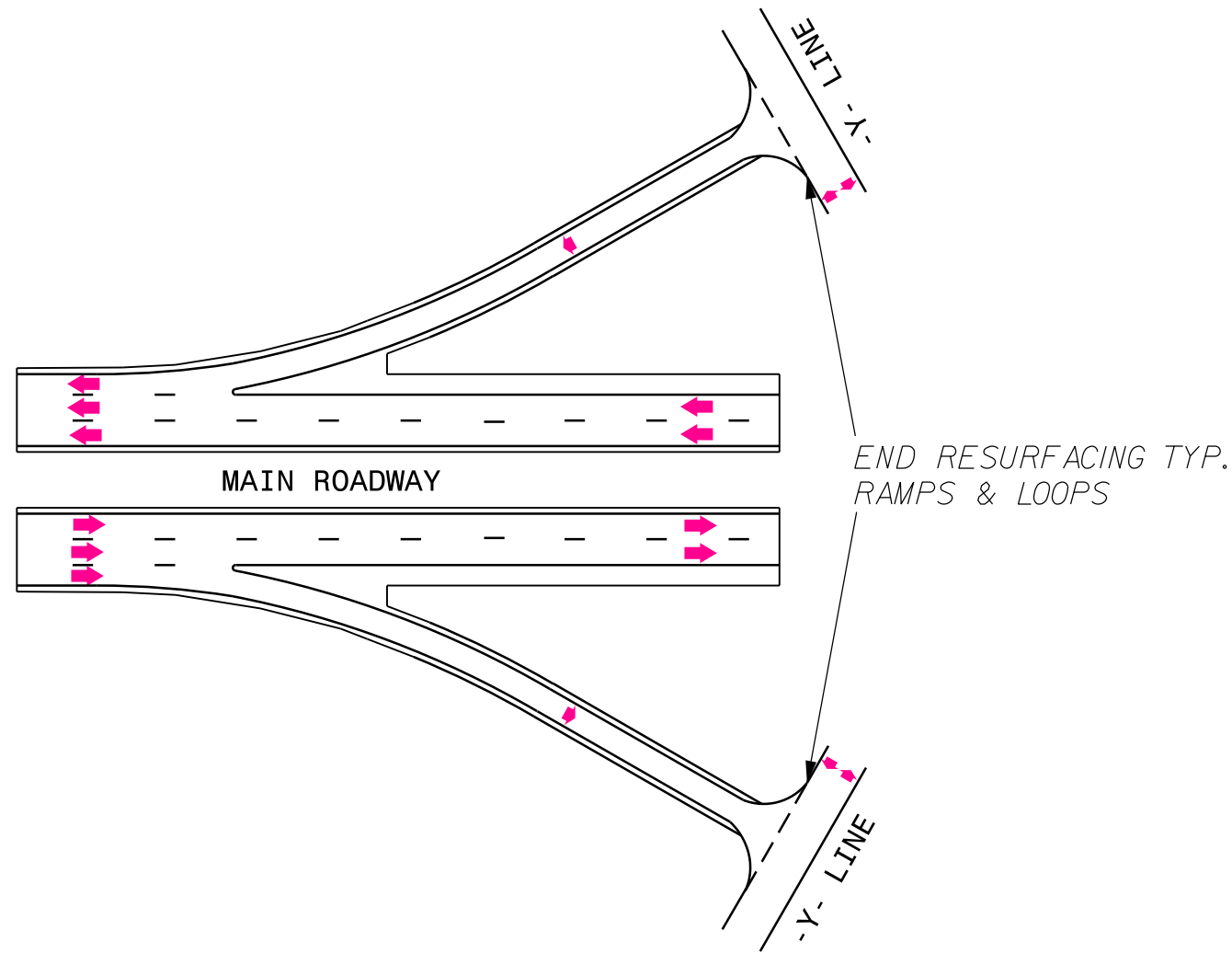


TYPICAL SECTION NO. 3

USE TYPICAL SECTION NO. 3 FOR:
RAMPS AND LOOPS AT CURB & GUTTER SECTIONS

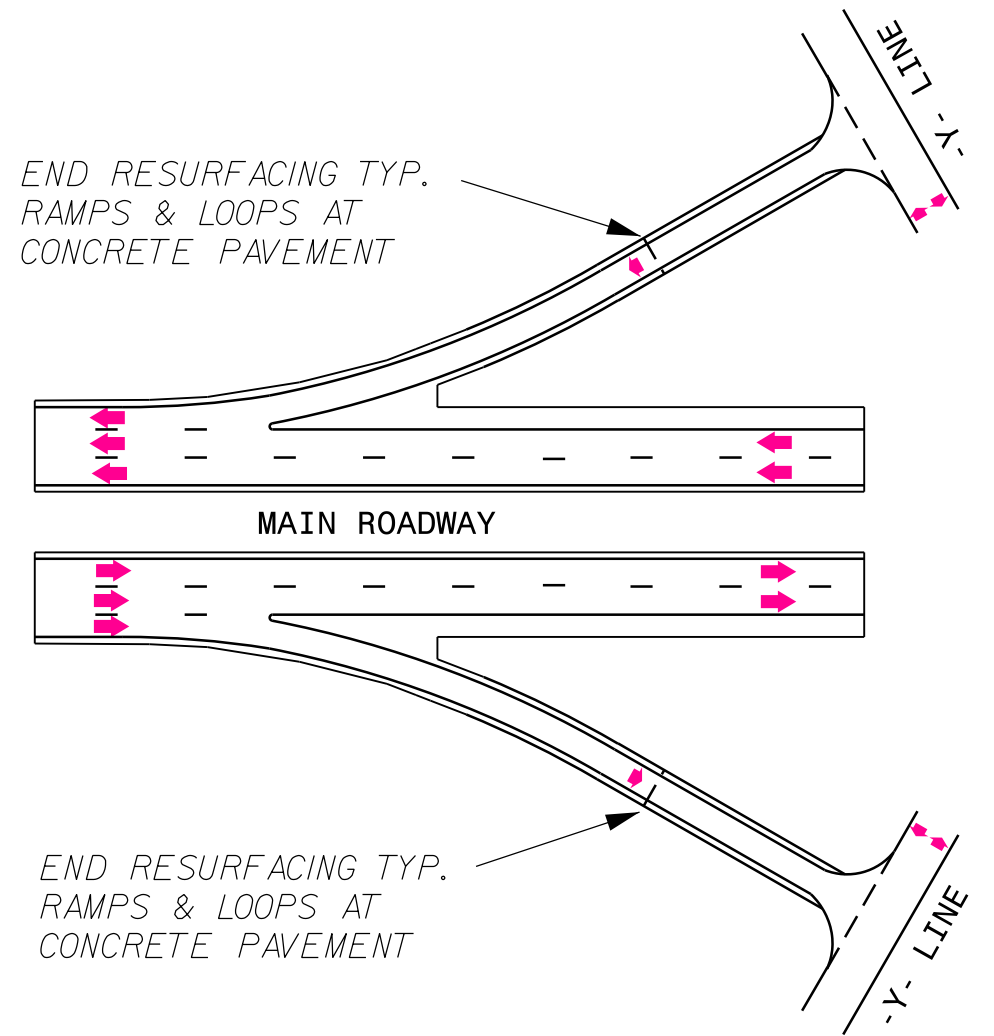
FINAL PAVEMENT SCHEDULE	
C	PROP. APPROX. 2" ASPHALT CONCRETE SURFACE COURSE, TYPE S9.5D, AT AN AVERAGE RATE OF 224 LBS. PER SQ. YD.
M	MILLED RUMBLE STRIPS
U	EXISTING PAVEMENT.
U1	EXISTING CURB AND GUTTER.
V	MILLING BITUMINOUS PAVEMENT. 2" DEPTH.

PROJECT REFERENCE NO. 1-5894	SHEET NO. 2B-1
RW SHEET NO.	
ROADWAY DESIGN ENGINEER	HYDRAULICS ENGINEER



DETAIL 1

USE DETAIL 1 FOR RAMPS AND LOOPS AT EXITS 23, 26, AND 27



DETAIL 2

USE DETAIL 2 FOR RAMPS AND LOOPS AT EXIT 22

PROJECT NO.	SHEET NO.	TOTAL NO.
I-5894 46436.3.1	3B-2	

SUMMARY OF QUANTITIES

PROJECT NO.	COUNTY	MAP	ROUTE	DESCRIPTION	TYP	LANES	LANE TYPE	FINAL SURFACE TESTING REQUIRED	WARM MIX ASPHALT REQUIRED	LENGTH MI	WIDTH FT	2" MILLING SY	INCIDENTAL MILLING SY	SURFACE COURSE, S9.5D TONS	POLYMER MODIFIED ASPHALT BINDER FOR PLANT MIX TONS	PATCHING EXISTING PAVEMENT TONS	MILLED RUMBLE STRIPS (ASPHALT CONCRETE) LF	SHOULDER GRADING UNDER GUARDRAIL LF	TEMPORARY SILT FENCE LF	WATTLE LF	MATTING FOR EROSION CONTROL SY	SEEDING AND MULCHING ACRE	STEEL BM GUARDRAIL LF	ADDITIONAL GUARDRAIL POSTS EA	GUARDRAIL ANCHOR UNITS, TYPE CAT-1 EA	GUARDRAIL ANCHOR UNITS, TYPE 350 EA	GUARDRAIL ANCHOR UNITS, TYPE B-77 EA	GUARDRAIL ANCHOR UNITS, TYPE B-83 EA	REMOVE EXISTING GUARDRAIL LF	INDUCTIVE LOOP SAWCUT LF	PORTABLE LIGHTING LS
I-5894 46436.3.1	Gaston	1	I-85	Mile Marker 22 to Mecklenburg County Line	1,2,3	6-8	MD	NO	NO	5.6	36-48	455,800	1,000	51,450	2,935	5,000	118,272	15,750	1,000	100	5,000	2.5	13,425	50	22	34	16	6	15,702	2,055	*
GRAND TOTAL										5.6		455,800	1,000	51,450	2,935	5,000	118,272	15,750	1,000	100	5,000	2.5	13,425	50	22	34	16	6	15,702	2,055	1

THERMOPLASTIC AND PAINT QUANTITIES

PROJECT NO.	COUNTY	MAP	ROUTE	DESCRIPTION	TYP	LANES	LANE TYPE	LENGTH	WIDTH	44000000	44050000	4410000000	4415000000	4420000000	4430000000	4445000000	4480000000	4510000000	4600000000	4600000000	4600000000	4710000000	4721000000	4725000000-E					4847100000-E		48471200	4905000000-N	
										WORK ZONE SIGNS (STATIONARY) SF	WORK ZONE SIGNS (PORTABLE) SF	WORK ZONE SIGNS (BARRICADE MOUNTED) SF	FLASHING ARROW BOARD EA	PORTABLE CHANGEABLE MESSAGE SIGN EA	DRUMS EA	BARRICADES (TYPE III) LF	TMA EA	LAW ENFORCEMENT HR	SEQUENTIAL FLASHING WARNING LIGHTS EA	WORK ZONE DIGITAL SPEED LIMIT SIGNS EA	WORK ZONE PRESENCE LIGHTING EA	24" X 120 M WHITE THERMO LF	THERMO MSG ONLY 120 M EA	THERMO LT ARROW 90 M EA	THERMO LT & RT ARROW 90 M EA	THERMO STR ARROW 90 M EA	THERMO RT ARROW 90 M EA	THERMO STR & LT ARROW 90 M EA	THERMO RAMP ARROWS 90 M EA	6" YELLOW POLYUREA (HRE) LF	6" WHITE POLYUREA (HRE) LF	12" WHITE POLYUREA (HRE) LF	SNOW PLOWABLE MARKERS EA
I-5894 46436.3.1	Gaston	1	I-85	Mile Marker 22 to Mecklenburg County Line	1,2,3	6-8	MD	5.6	36-48	510	224	80	2	3	260	64	2	486	16	4	15	269	49	13	6	24	23	4	8	70,093	116,236	11,474	3,000
GRAND TOTAL										510	224	80	2	3	260	64	2	486	16	4	15	269	49	13	6	24	23	4	8	70,093	116,236	11,474	3,000
																						78					186,329						