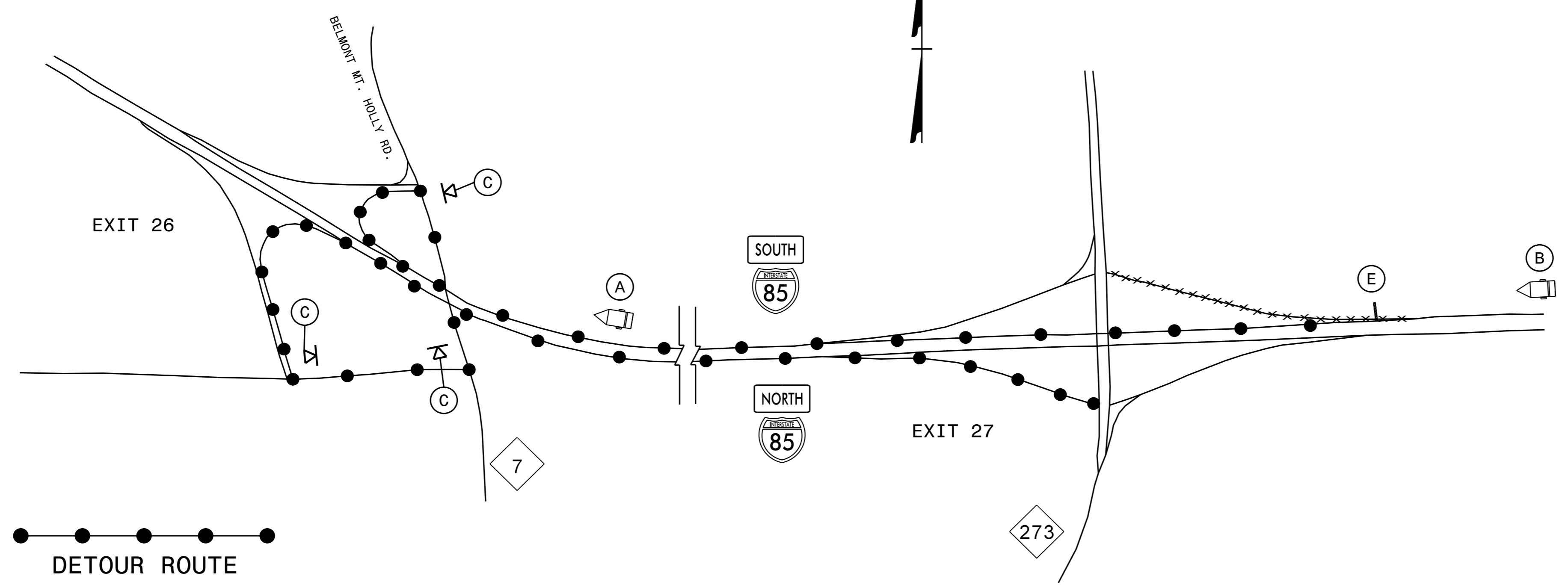


**DETOUR 13: CLOSURE AT I-85 S EXIT 27
EXIT RAMP TO NC 7**



(A)

MESSAGE NO. 1	MESSAGE NO. 2
NC 273 DETOUR EXIT 26	NEXT RIGHT

CHANGEABLE MESSAGE SIGN

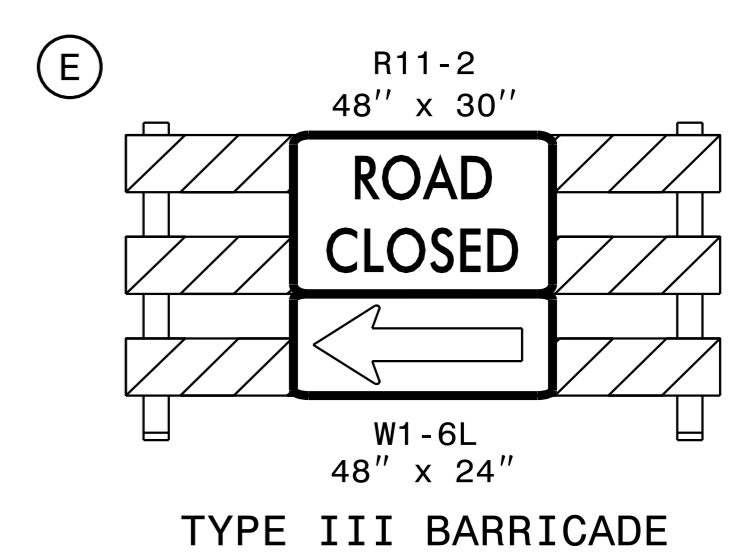
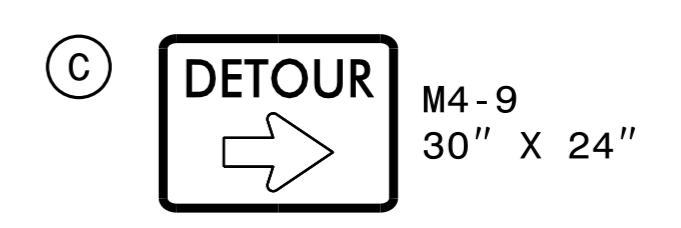
MIN. 1500 FT IN ADVANCE OF
EXIT 26 DECELERATION LANE
OR AS DIRECTED BY ENGINEER

(B)

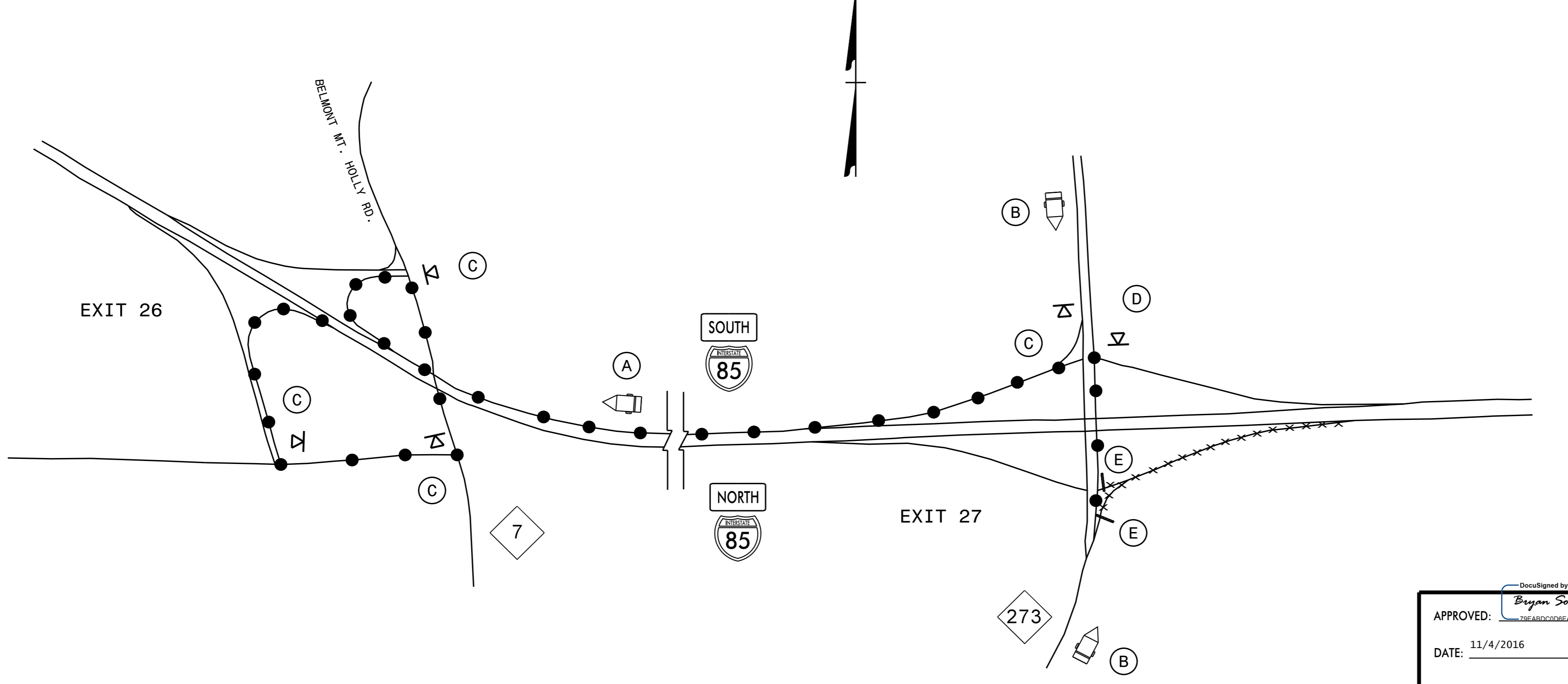
MESSAGE NO. 1	MESSAGE NO. 2
EXIT 27 NC 273 CLOSED	DETOUR TO EXIT 26

CHANGEABLE MESSAGE SIGN

MIN. 1/2 MILE IN ADVANCE OF
EXIT 27 DECELERATION LANE
OR AS DIRECTED BY ENGINEER



**DETOUR 14: CLOSURE AT I-85 N EXIT 27
ENTRANCE RAMP TO I-85 N**



(A)

MESSAGE NO. 1	MESSAGE NO. 2
I-85 N DETOUR EXIT 26	NEXT RIGHT

CHANGEABLE MESSAGE SIGN

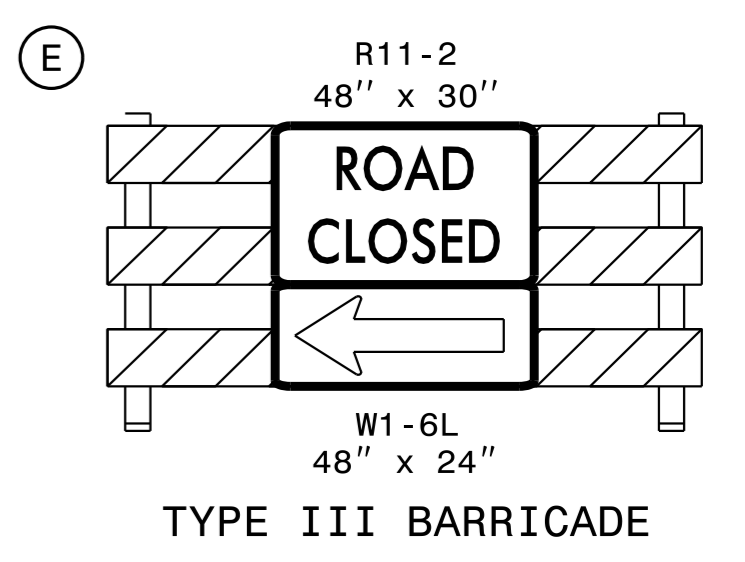
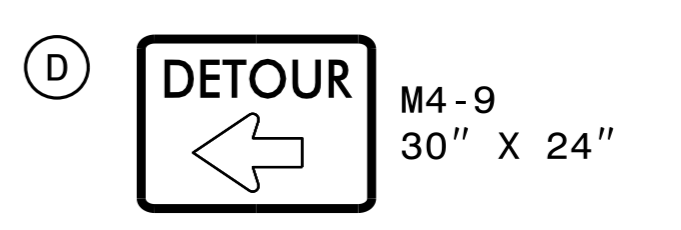
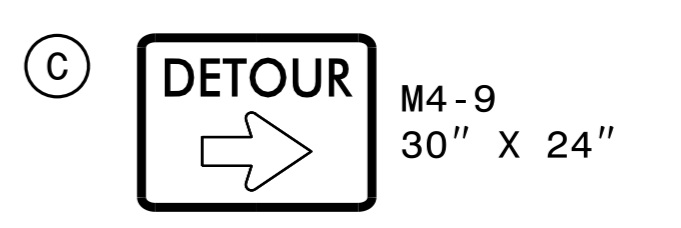
MIN. 1500 FT IN ADVANCE OF
EXIT 26 DECELERATION LANE
OR AS DIRECTED BY ENGINEER

(B)

MESSAGE NO. 1	MESSAGE NO. 2
I-85 N RAMP CLOSED	FOLLOW DETOUR AHEAD

CHANGEABLE MESSAGE SIGN

MIN. 350 FT IN ADVANCE OF
I-85 N ENTRANCE RAMP
OR AS DIRECTED BY ENGINEER
MIN. 1/2 MILE IN ADVANCE OF
I-85 S ENTRANCE RAMP
OR AS DIRECTED BY ENGINEER

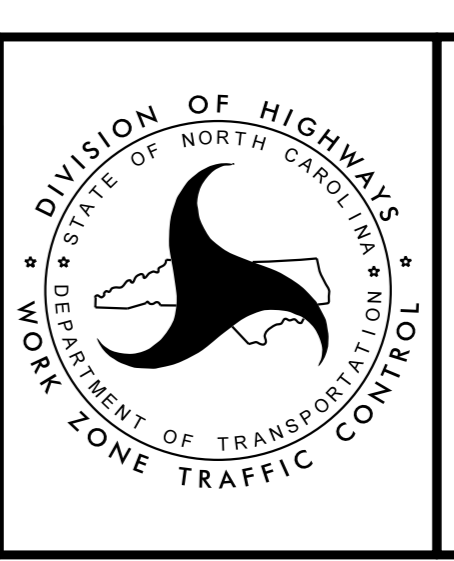


04-NOV-2016 ihz \\ADOT\DF\GROUPS-Div\2CC\DDC\District\Gaston\I-5894 I-85 MM22 to Countyline\Traffic Control\I-5894-TC-TMP-08-Exit 27 Detours I3 & I4.dgn
Bksowell AT DICCADZ10892

APPROVED: *Bryan Sowell*
DATE: 11/4/2016

SEAL

DOCUMENT NOT CONSIDERED FINAL
UNLESS ALL SIGNATURES COMPLETED



I-85 EXIT 27
RAMP DETOURS
13 & 14