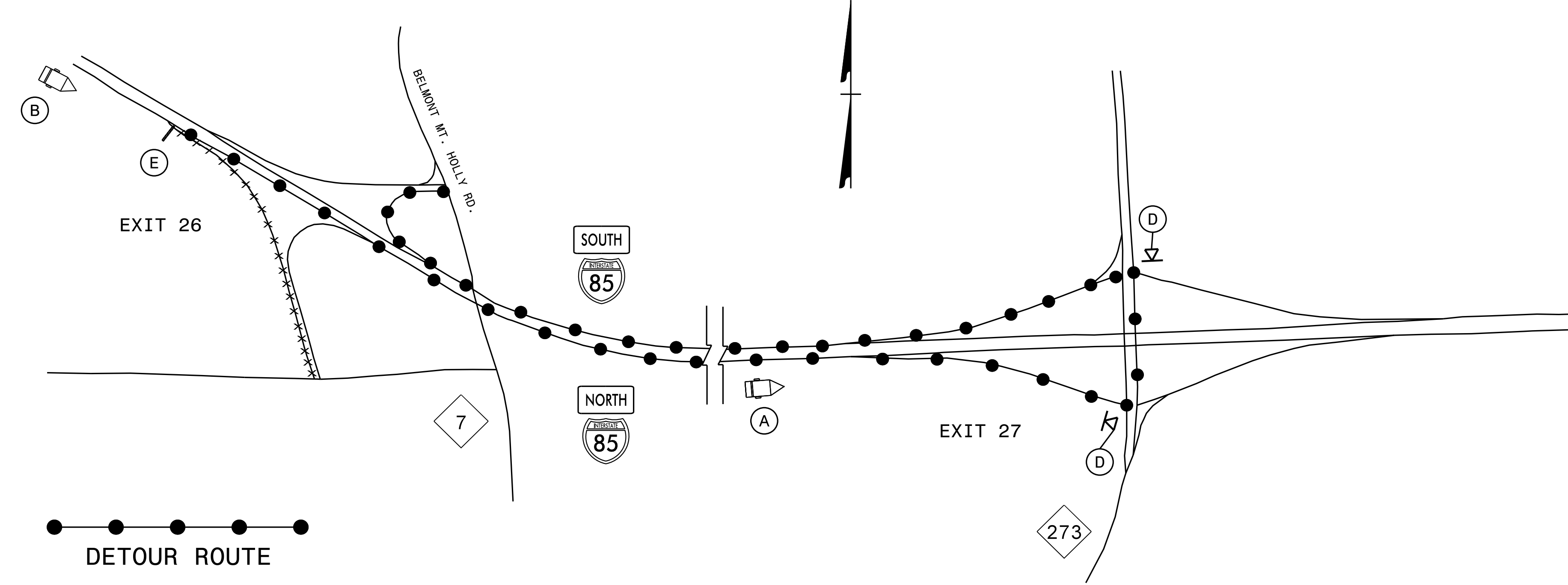


**DETOUR 11: CLOSURE AT I-85 N EXIT 26
EXIT RAMP TO NC 7 & BELMONT MT. HOLLY RD.**



(A)

MESSAGE NO. 1	MESSAGE NO. 2
NC 7 DETOUR EXIT 27	

CHANGEABLE MESSAGE SIGN

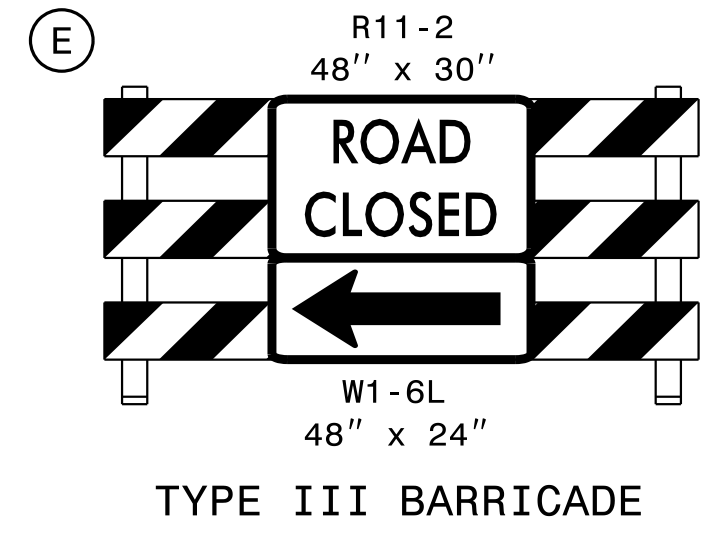
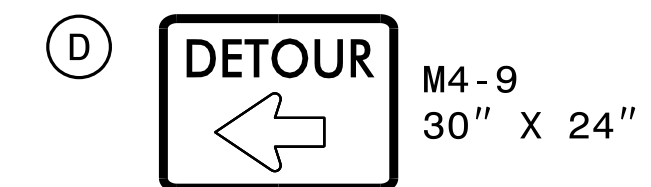
MIN. 1500 FT IN ADVANCE OF
EXIT 27 DECELERATION LANE
OR AS DIRECTED BY ENGINEER

(B)

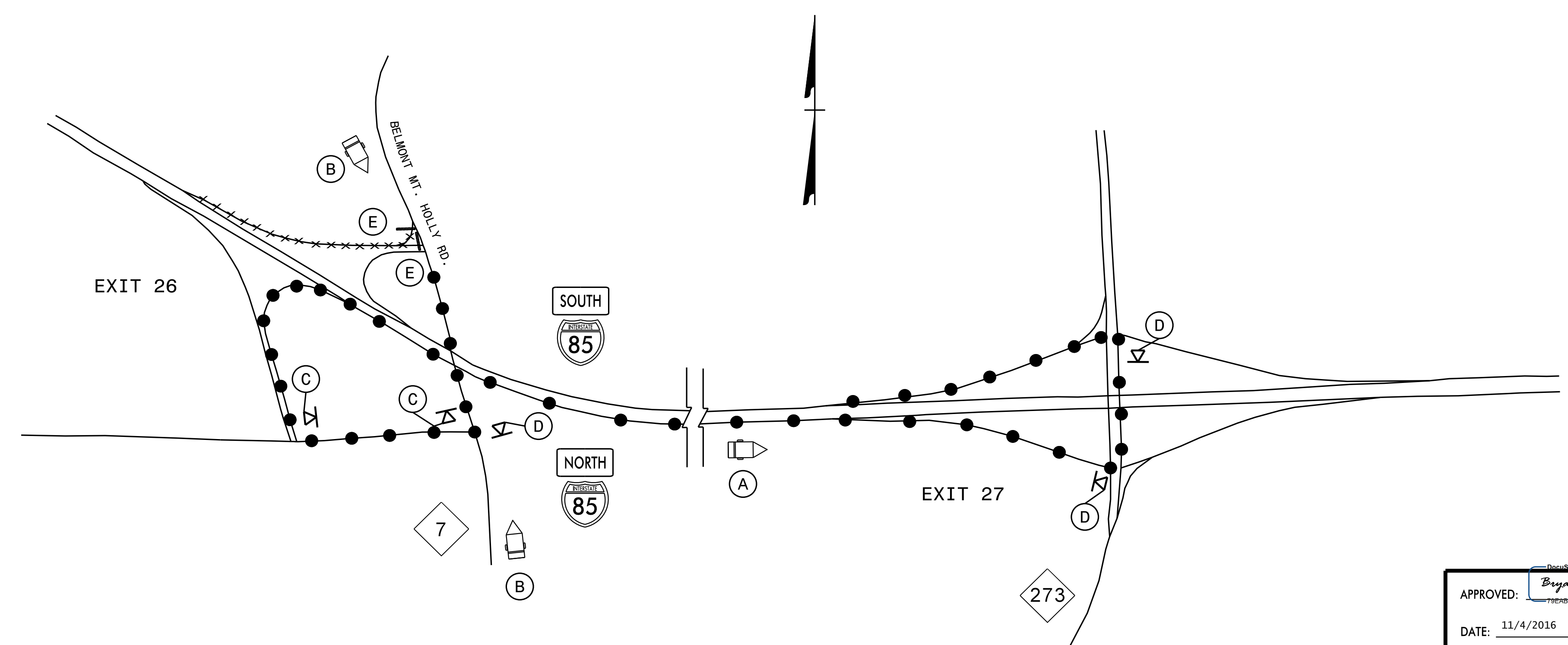
MESSAGE NO. 1	MESSAGE NO. 2
EXIT 26 NC 7 CLOSED	DETOUR TO EXIT 27

CHANGEABLE MESSAGE SIGN

MIN. 1/2 MILE IN ADVANCE OF
EXIT 26 DECELERATION LANE
OR AS DIRECTED BY ENGINEER



**DETOUR 12: CLOSURE AT I-85 S EXIT 26
ENTRANCE RAMP TO I-85 S**



(A)

MESSAGE NO. 1	MESSAGE NO. 2
I-85 S DETOUR EXIT 27	

CHANGEABLE MESSAGE SIGN

MIN. 1500 FT IN ADVANCE OF
EXIT 27 DECELERATION LANE
OR AS DIRECTED BY ENGINEER

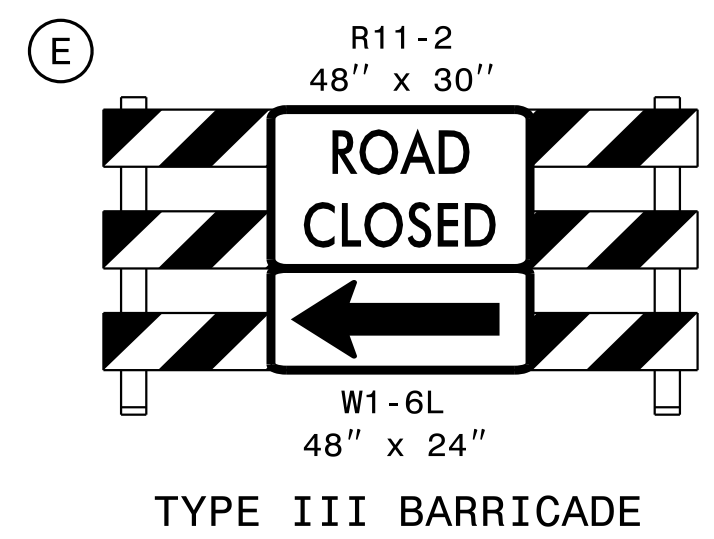
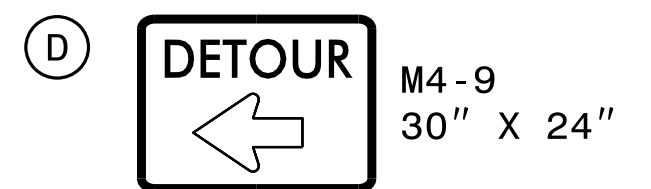
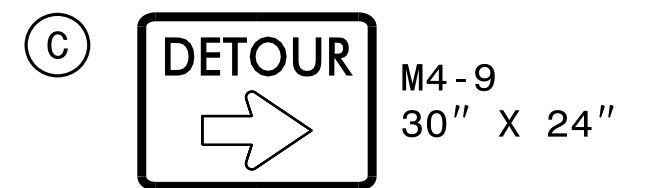
(B)

MESSAGE NO. 1	MESSAGE NO. 2
I-85 S RAMP CLOSED	FOLLOW DETOUR AHEAD

CHANGEABLE MESSAGE SIGN

MIN. 350 FT IN ADVANCE OF
I-85 S ENTRANCE RAMP
OR AS DIRECTED BY ENGINEER

MIN. 350 FT IN ADVANCE OF
I-85 N ENTRANCE RAMP
OR AS DIRECTED BY ENGINEER



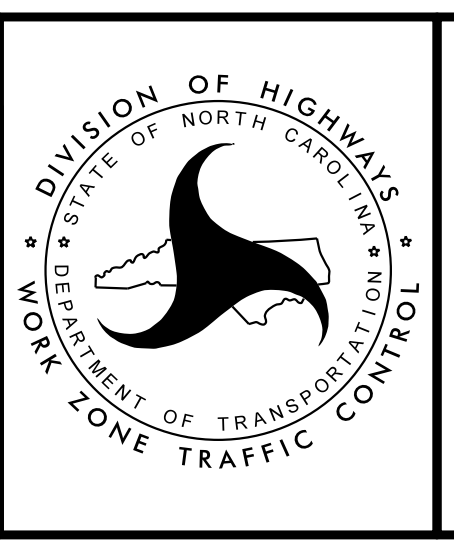
04-NOV-2016 ihl \\ADOT\DF\GROUPS-Div\2CC\DDC\District\Gaston\I-5894 I-85 MM22 to Countyline\Traffic Control\I-5894_I-85_TMP-07-Exit 26 Detours I& I2.dgn Bksowell AT DICADZ10892

APPROVED: *Bryan Sowell*

DATE: 11/4/2016

SEAL

**DOCUMENT NOT CONSIDERED FINAL
UNLESS ALL SIGNATURES COMPLETED**



I-85 EXIT 27
RAMP DETOURS
11 & 12