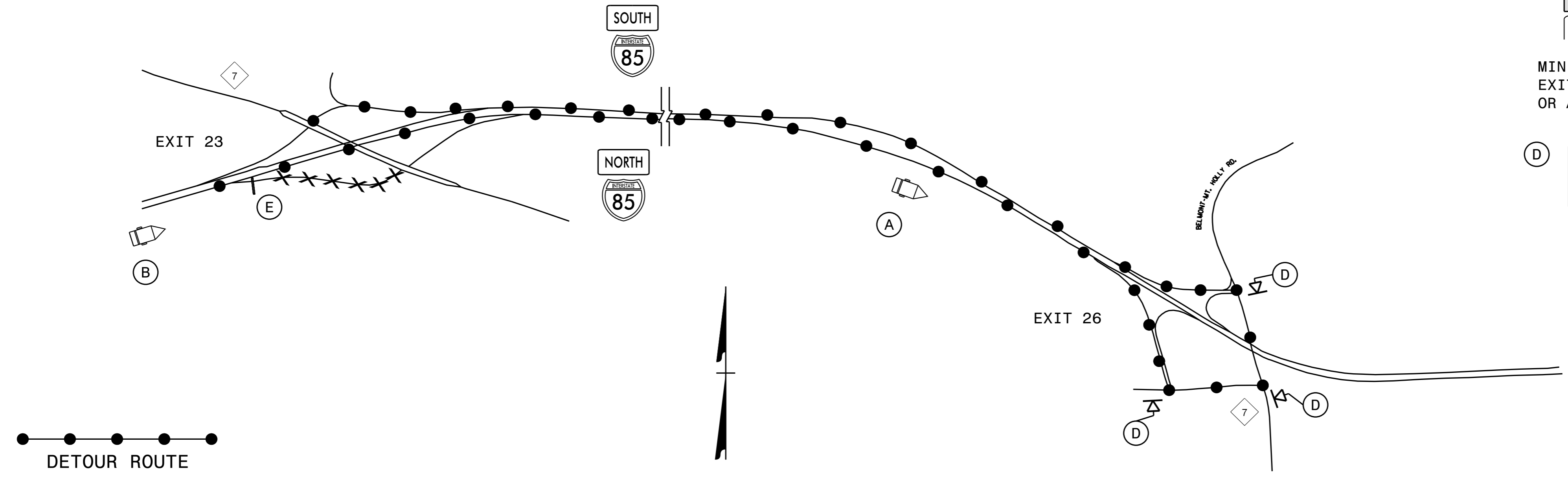


**DETOUR 7: CLOSURE AT I-85 N EXIT 23
EXIT RAMP TO NC 7**



(A)

MESSAGE NO. 1	MESSAGE NO. 2
NC 7 DETOUR EXIT 26	NEXT RIGHT

CHANGEABLE MESSAGE SIGN

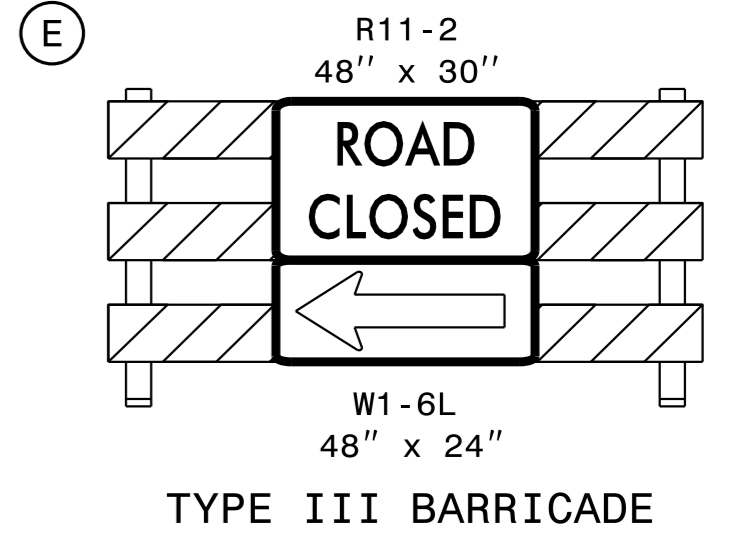
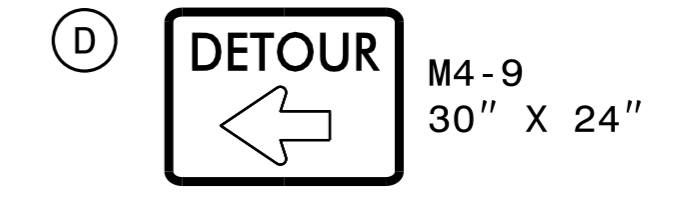
MIN. 1500 FT IN ADVANCE OF
EXIT 26 DECELERATION LANE
OR AS DIRECTED BY ENGINEER

(B)

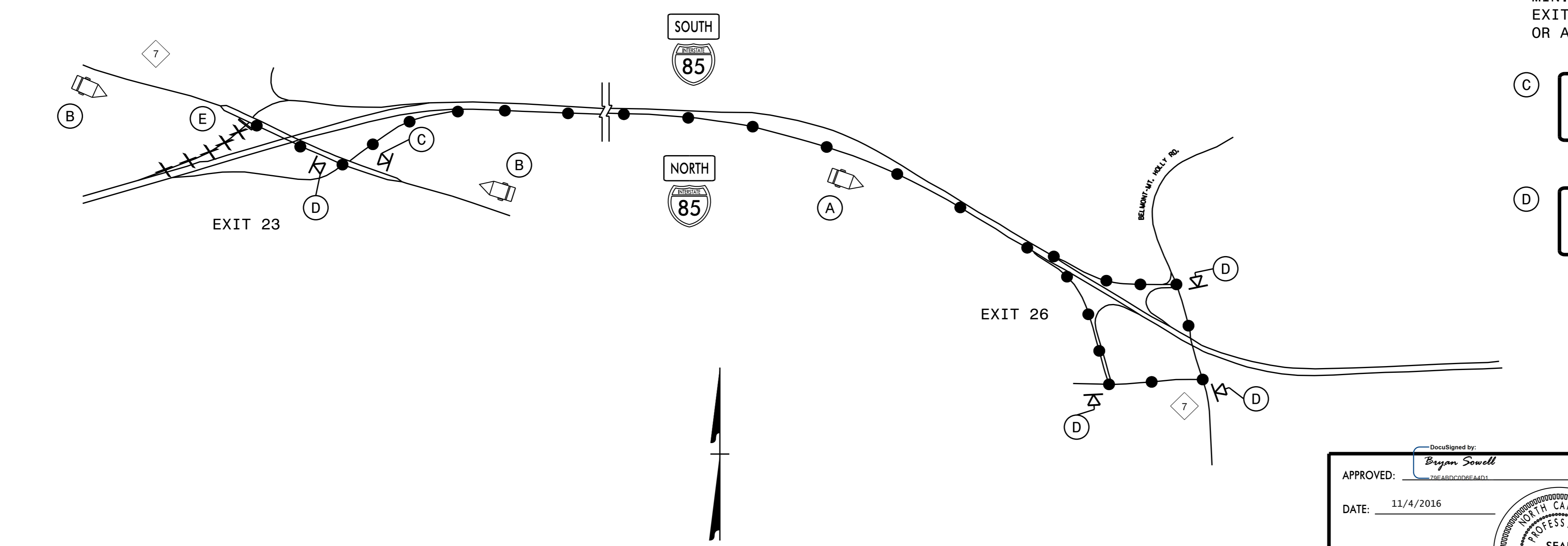
MESSAGE NO. 1	MESSAGE NO. 2
EXIT 23 NC 7 CLOSED	DETOUR TO EXIT 26

CHANGEABLE MESSAGE SIGN

MIN. 1/2 MILE IN ADVANCE OF
EXIT 23 DECELERATION LANE
OR AS DIRECTED BY ENGINEER



**DETOUR 8: CLOSURE AT I-85 S EXIT 23
ENTRANCE RAMP TO I-85 S**



(A)

MESSAGE NO. 1	MESSAGE NO. 2
I-85 S DETOUR EXIT 26	NEXT RIGHT

CHANGEABLE MESSAGE SIGN

MIN. 1500 FT IN ADVANCE OF
EXIT 26 DECELERATION LANE
OR AS DIRECTED BY ENGINEER

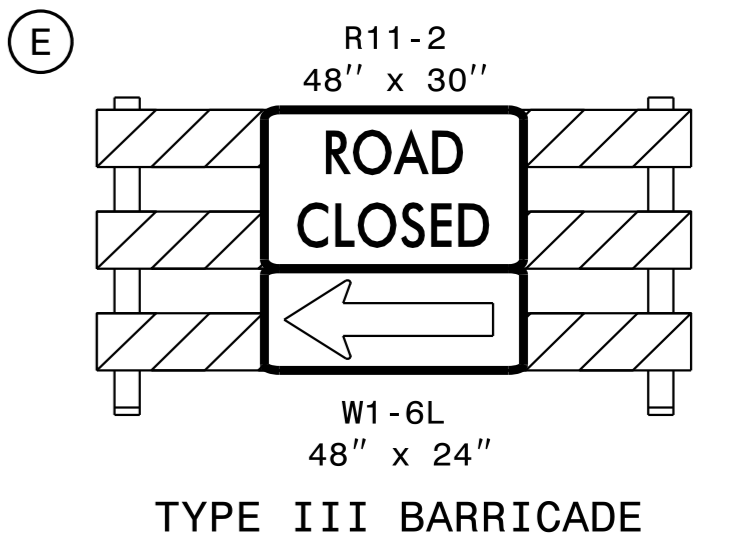
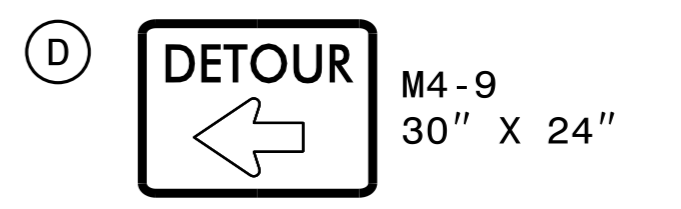
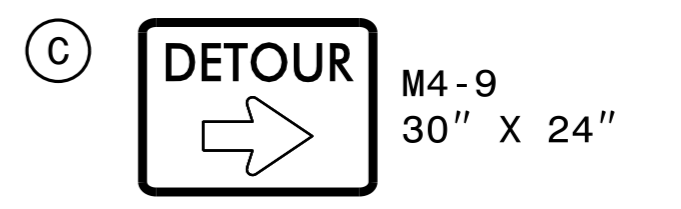
(B)

MESSAGE NO. 1	MESSAGE NO. 2
EXIT 23 RAMP CLOSED	FOLLOW DETOUR AHEAD

CHANGEABLE MESSAGE SIGN

MIN. 350 FT IN ADVANCE OF
I-85 N ENTRANCE RAMP
OR AS DIRECTED BY ENGINEER

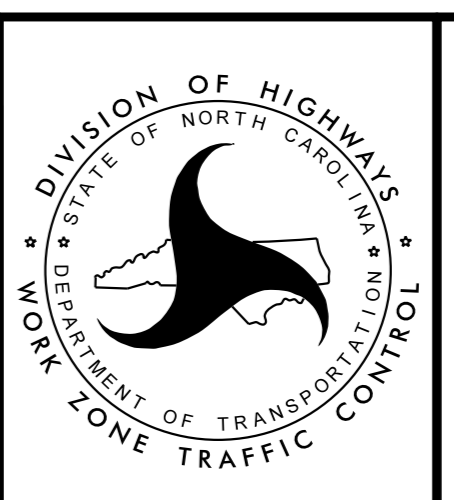
MIN. 350 FT IN ADVANCE OF
I-85 S ENTRANCE RAMP
OR AS DIRECTED BY ENGINEER



APPROVED: *Byron Swell*
DATE: 11/4/2016

SEAL

DOCUMENT NOT CONSIDERED FINAL
UNLESS ALL SIGNATURES COMPLETED



I-85 EXIT 23
RAMP DETOURS
7 & 8

04-NOV-2016 14:09 \\ADOT\DFSR00101\GROUPS-Div\2CC\DDC\District\Gaston\I-5894 I-85 MM22 to Countyline\Traffic Control\I-5894-TC-TMP-05-Exit 23 Detours 7 & 8.dgn
Bksowell AT DIZCADZ10892