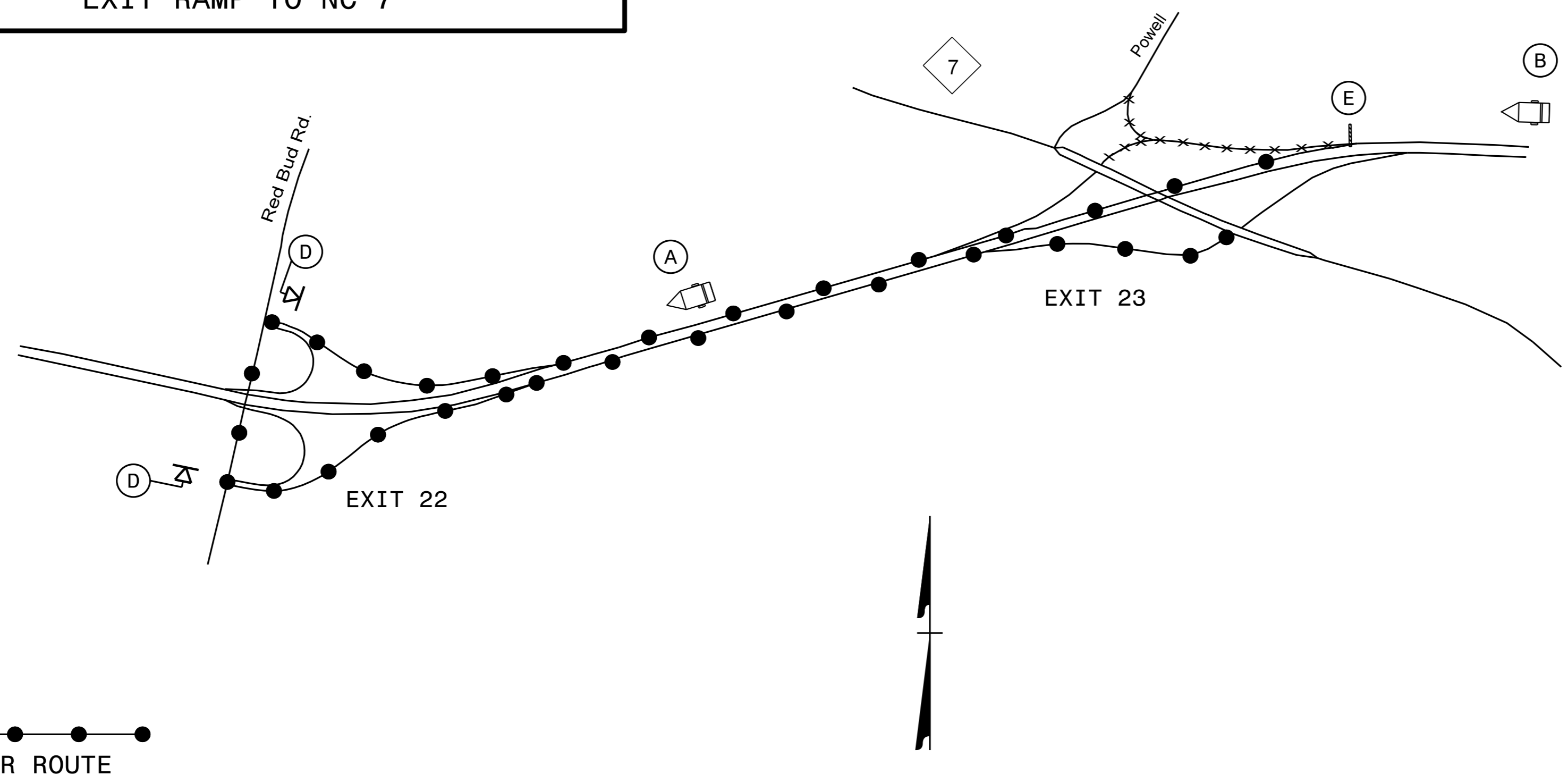


**DETOUR 5: CLOSURE AT I-85 S EXIT 23
EXIT RAMP TO NC 7**



(A)

MESSAGE NO. 1	MESSAGE NO. 2
NC 7 DETOUR EXIT 22	NEXT RIGHT

CHANGEABLE MESSAGE SIGN

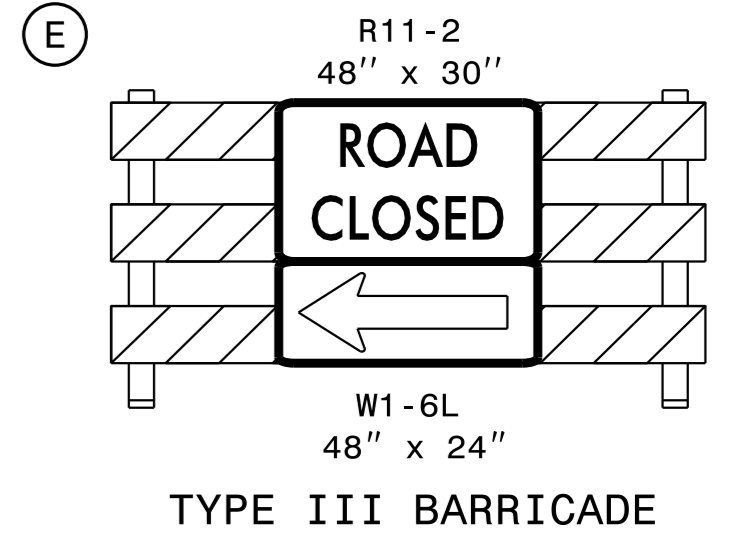
MIN. 1500 FT IN ADVANCE OF
EXIT 22 DECELERATION LANE
OR AS DIRECTED BY ENGINEER

(B)

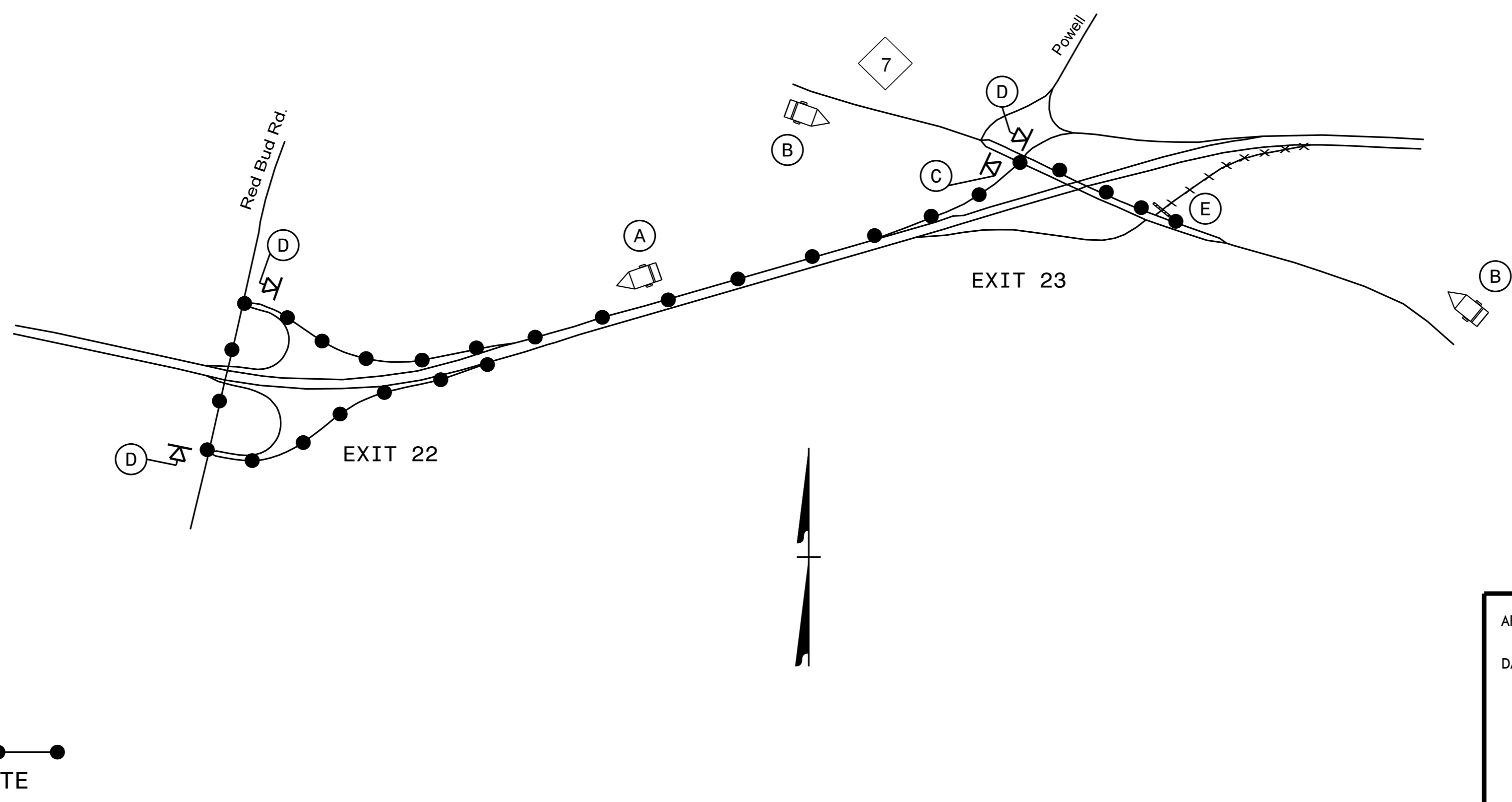
MESSAGE NO. 1	MESSAGE NO. 2
EXIT 23 NC 7 CLOSED	DETOUR TO EXIT 22

CHANGEABLE MESSAGE SIGN

MIN. 1/2 MILE IN ADVANCE OF
EXIT 23 DECELERATION LANE
OR AS DIRECTED BY ENGINEER



**DETOUR 6: CLOSURE AT I-85 N EXIT 23
ENTRANCE RAMP TO I-85 N**



(A)

MESSAGE NO. 1	MESSAGE NO. 2
I-85 N DETOUR EXIT 22	

CHANGEABLE MESSAGE SIGN

MIN. 1500 FT IN ADVANCE OF
EXIT 22 DECELERATION LANE
OR AS DIRECTED BY ENGINEER

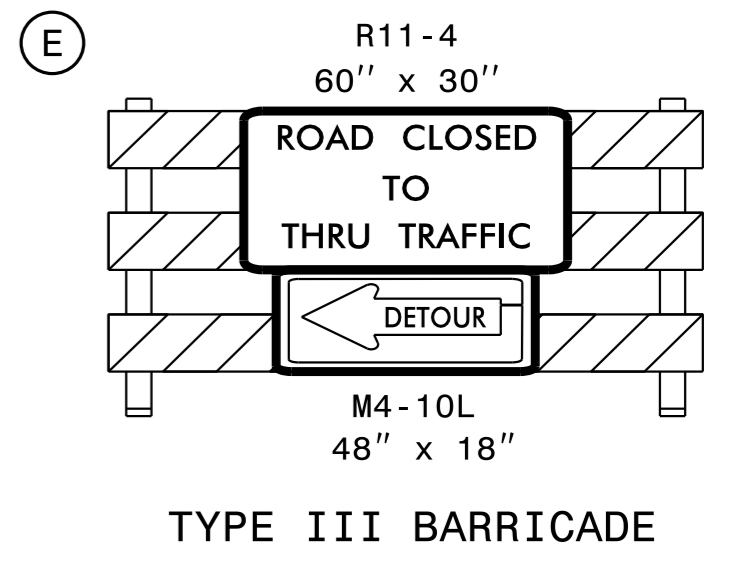
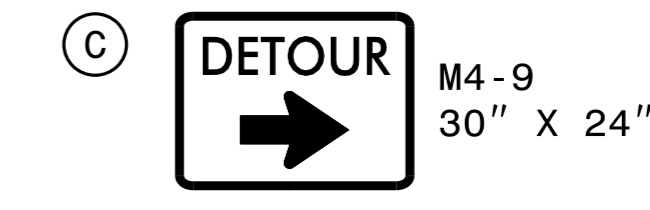
(B)

MESSAGE NO. 1	MESSAGE NO. 2
EXIT 23 RAMP CLOSED	FOLLOW DETOUR AHEAD

CHANGEABLE MESSAGE SIGN

MIN. 350 FT IN ADVANCE OF
I-85 N ENTRANCE RAMP
OR AS DIRECTED BY ENGINEER

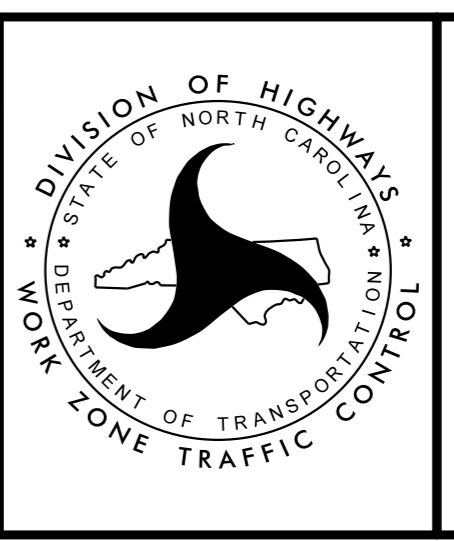
MIN. 350 FT IN ADVANCE OF
I-85 S ENTRANCE RAMP
OR AS DIRECTED BY ENGINEER



04-NOV-2016 11:07 \\ADOT\DFSR00101\GROUPS-Div2\CC\DDC\District\Gaston\I-5894 I-85 MM22 to Countyline\Traffic Control\I-5894-TC-TMP-04-Exit 23 Detours 5 & 6.dgn
Bksowell AT DICCADZ10892

APPROVED: *Bryan Sowell*
DATE: 11/4/2016

SEAL



**I-85 EXIT 23
RAMP DETOURS
5 & 6**

**DOCUMENT NOT CONSIDERED FINAL
UNLESS ALL SIGNATURES COMPLETED**