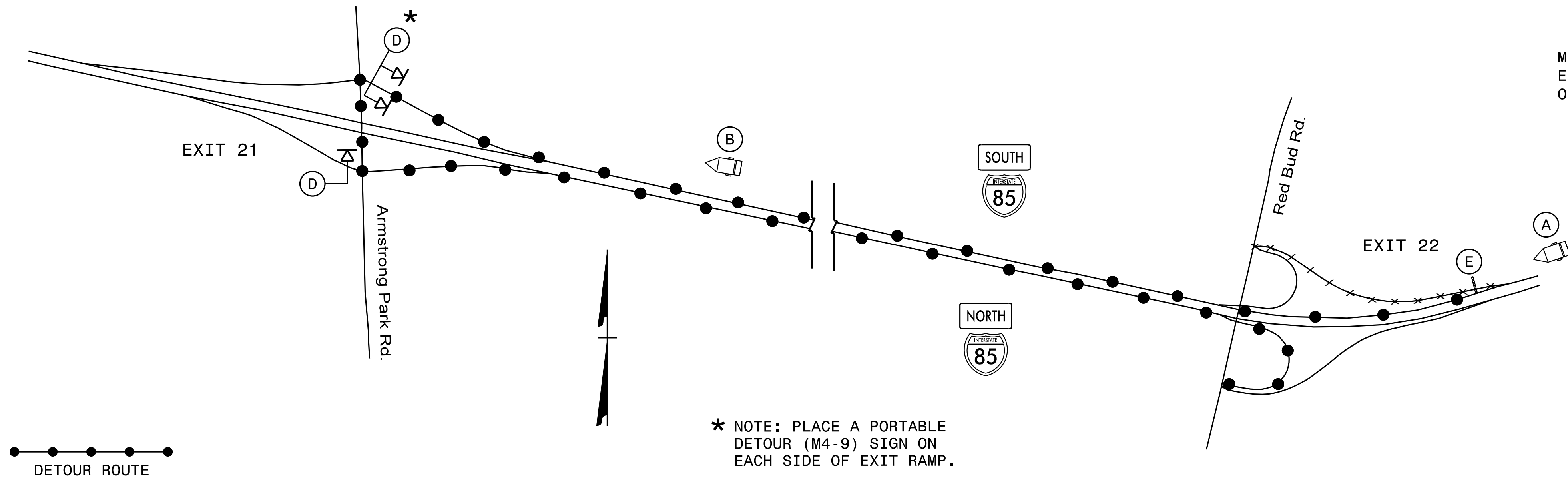


**DETOUR 1: CLOSURE AT I-85 S EXIT 22
EXIT RAMP TO RED BUD RD.**



* NOTE: PLACE A PORTABLE
DETOUR (M4-9) SIGN ON
EACH SIDE OF EXIT RAMP.

(A)

MESSAGE NO. 1	MESSAGE NO. 2
EXIT 22 RED BUD CLOSED	DETOUR TO EXIT 21

CHANGEABLE MESSAGE SIGN

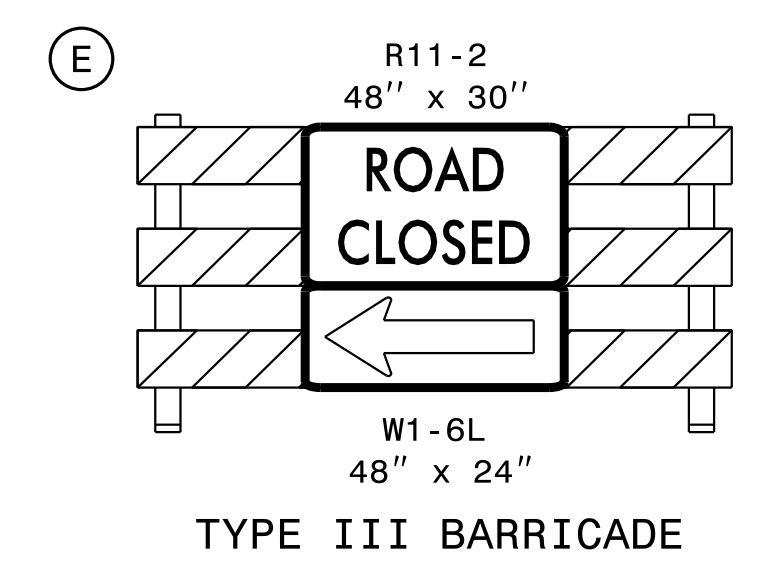
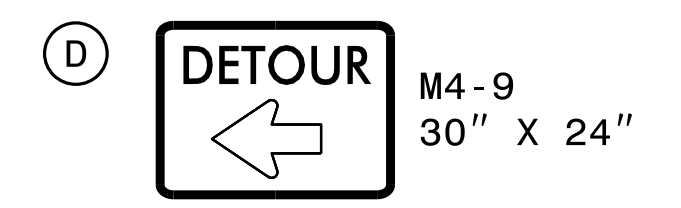
MIN. 1/2 MILE IN ADVANCE OF
EXIT 22 DECELERATION LANE
OR AS DIRECTED BY ENGINEER

(B)

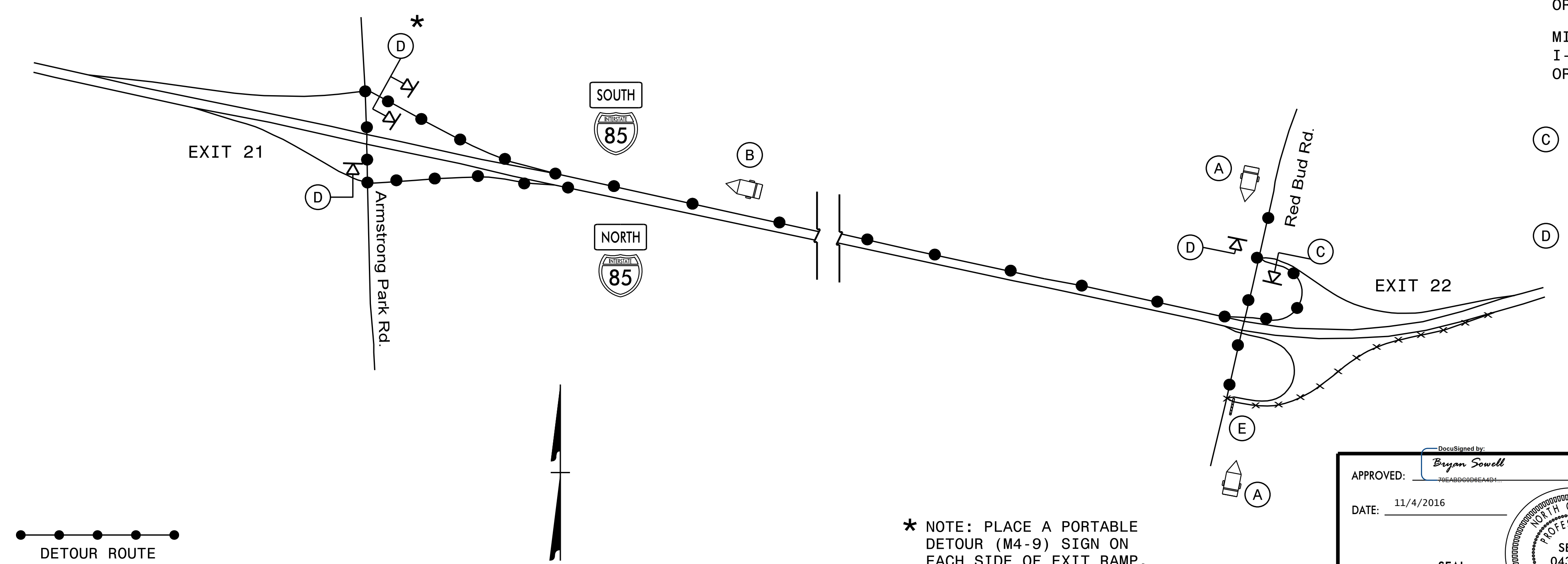
MESSAGE NO. 1	MESSAGE NO. 2
RED BUD DETOUR EXIT 21	NEXT RIGHT

CHANGEABLE MESSAGE SIGN

MIN. 1500 FT IN ADVANCE OF
EXIT 21 DECELERATION LANE
OR AS DIRECTED BY ENGINEER



**DETOUR 2: CLOSURE AT I-85 N EXIT 22
ENTRANCE RAMP TO I-85 NORTH**



* NOTE: PLACE A PORTABLE
DETOUR (M4-9) SIGN ON
EACH SIDE OF EXIT RAMP.

(A)

MESSAGE NO. 1	MESSAGE NO. 2
I-85 N RAMP CLOSED	DETOUR USE I-85 S

CHANGEABLE MESSAGE SIGN

MIN. 350 FT IN ADVANCE OF
I-85 N ENTRANCE RAMP
OR AS DIRECTED BY ENGINEER

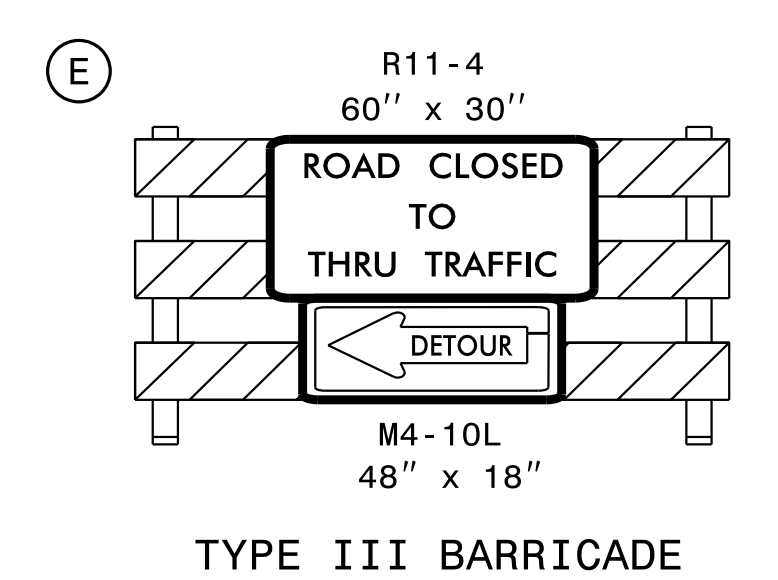
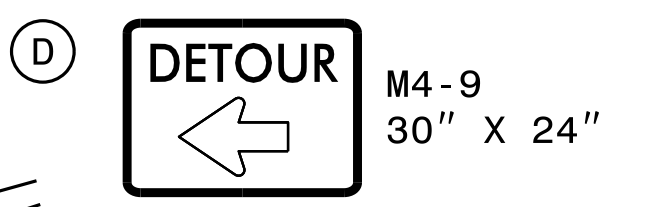
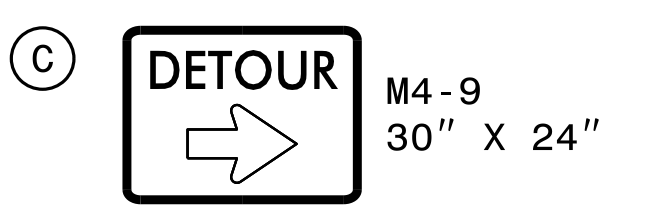
MIN. 350 FT IN ADVANCE OF
I-85 S ENTRANCE RAMP
OR AS DIRECTED BY ENGINEER

(B)

MESSAGE NO. 1	MESSAGE NO. 2
I-85 N DETOUR EXIT 21	NEXT RIGHT

CHANGEABLE MESSAGE SIGN

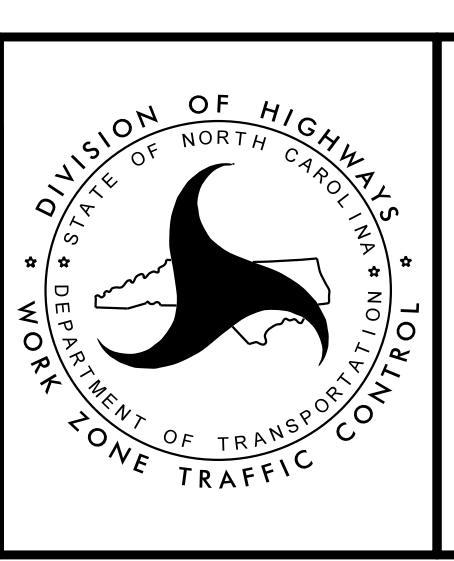
MIN. 1500 FT IN ADVANCE OF
EXIT 21 DECELERATION LANE
OR AS DIRECTED BY ENGINEER



APPROVED: *Bryan Sowell*
DATE: 11/4/2016

SEAL

DOCUMENT NOT CONSIDERED FINAL
UNLESS ALL SIGNATURES COMPLETED



I-85 EXIT 22
RAMP DETOURS
1 & 2

04-NOV-2016 11:04 \\ADOT\DFSR00101\GROUPS-Div2\CC\DDC\District\Gaston\I-5894 I-85 MM22 to Countyline\Traffic Control\I-5894-TMP-02-Exit 22 Detours I & 2.dgn
Bksowell AT DICADZ10892