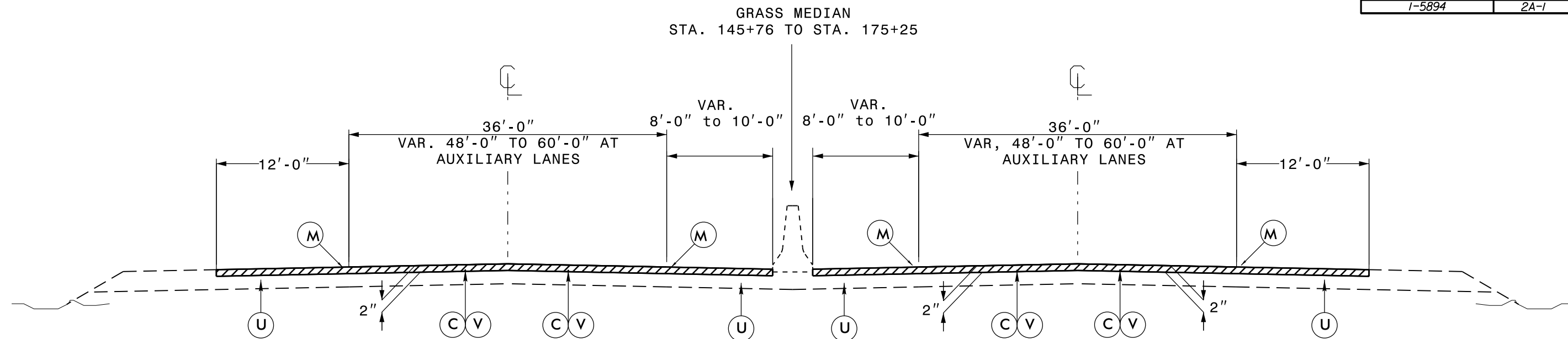
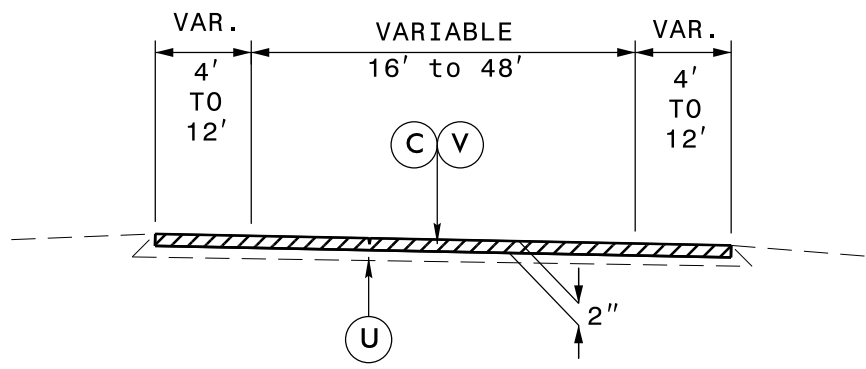


5/14/99



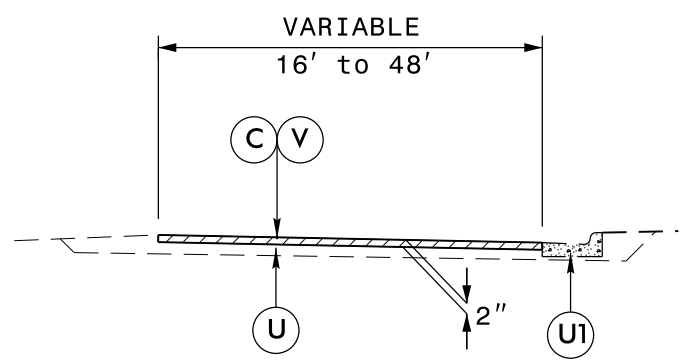
TYPICAL SECTION NO. 1

USE TYPICAL SECTION NO. 1
FROM MILE MARKER 22 TO
BEGIN BRIDGE OVER CATAWBA RIVER



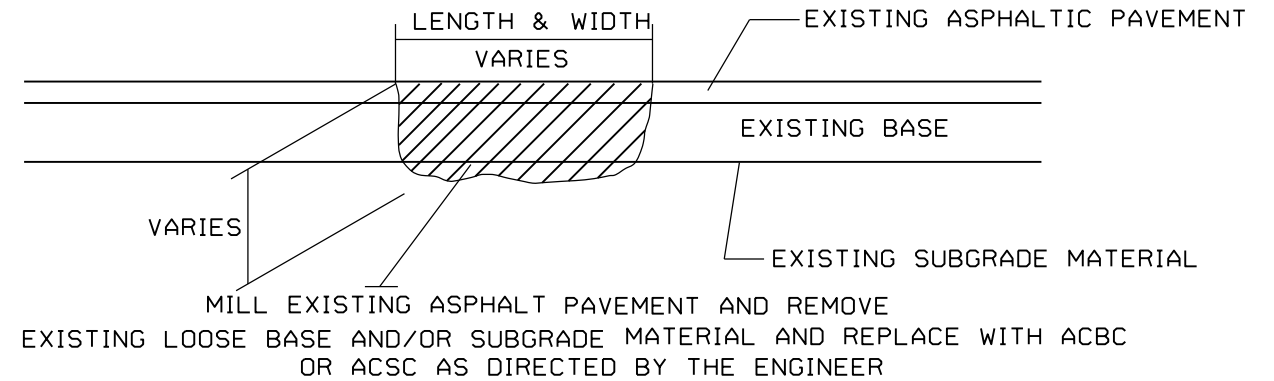
TYPICAL SECTION NO. 2

USE TYPICAL SECTION NO. 2 FOR:
RAMPS AND LOOPS WITH SHOULDERS



TYPICAL SECTION NO. 3

USE TYPICAL SECTION NO. 3 FOR:
RAMPS AND LOOPS AT CURB & GUTTER SECTIONS



PATCHING EXISTING PAVEMENT

FINAL PAVEMENT SCHEDULE	
C	PROP. APPROX. 2" ASPHALT CONCRETE SURFACE COURSE, TYPE S9.5D, AT AN AVERAGE RATE OF 224 LBS. PER SQ. YD.
M	MILLED RUMBLE STRIPS
U	EXISTING PAVEMENT.
U1	EXISTING CURB AND GUTTER.
V	MILLING BITUMINOUS PAVEMENT. 2" DEPTH.