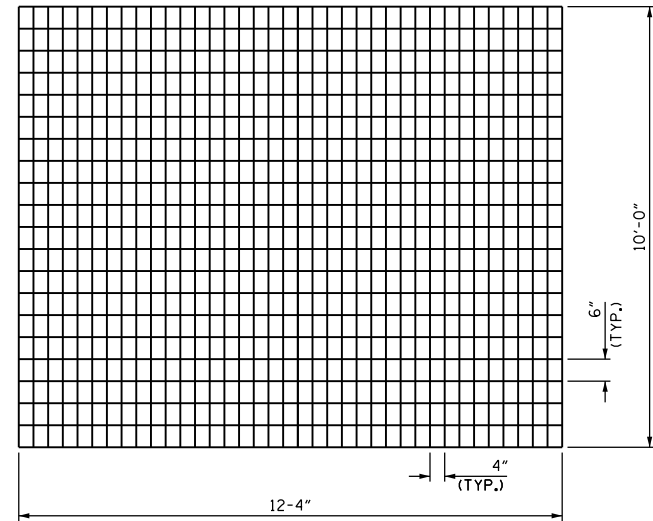
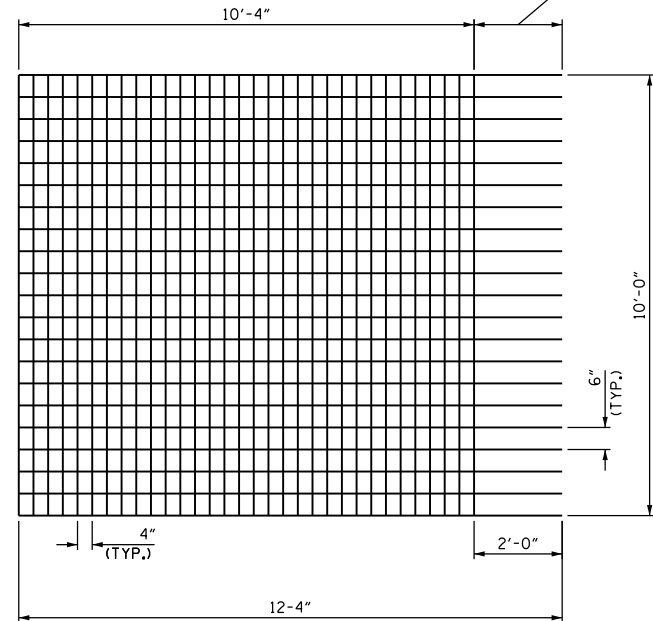


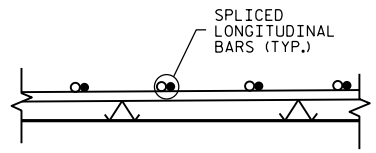
PLAN VIEW



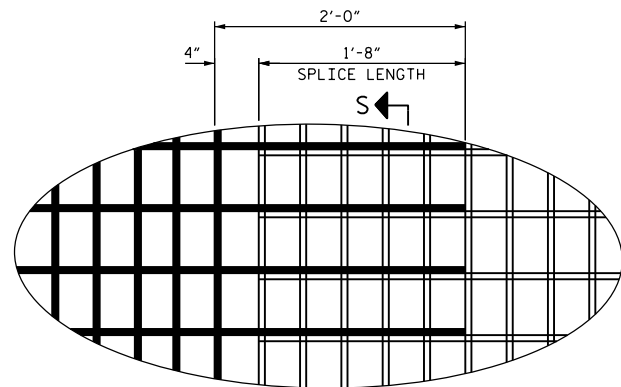
\* WWR SHEET DETAILS - (A1)  
(3 REQUIRED)



\* WWR SHEET DETAILS - (A2)  
(9 REQUIRED)



SECTION S-S



DETAIL 'C'  
(LONGITUDINAL SPLICE)

NOTES

CUSTOM WELDED WIRE REINFORCING (\* WWR) SHEETS SHALL BE PROVIDED:  
 6 X 4 D6/D6 (GRADE 70) 10'-0" (+0,+0) X 12'-6" (+0,+0)  
 12 SHEETS REQUIRED- FOR WWR SHEET LAYOUT SEE PLAN VIEW.

FOR SHEETS A1 AND A2 SEE "WWR SHEET DETAILS" THIS SHEET.

FOR TRANSVERSE SPLICE, SEE "TYPICAL SECTION & JOINT DETAILS SPAN 154" SHEET.

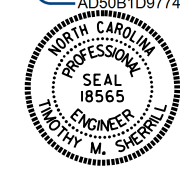
ALTERNATIVELY, THE CONTRACTOR MAY PROPOSE TO USE COMMONLY AVAILABLE \* WWR SHEETS, INSTEAD OF CUSTOM FABRICATED SHEETS. THE CONTRACTOR SHALL SUBMIT FOR APPROVAL THE PROPOSED \* WWR SHEETS SIZES, INFORMATION AND LAYOUT. SPLICE LENGTHS SHALL BE IN ACCORDANCE WITH THE WIRE REINFORCEMENT INSTITUTE REQUIREMENTS. AT LONGITUDINAL SPLICES, TRAVERSE WIRES ON ONE SHEET BEING SPLICED SHALL BE REMOVED WITHIN THE SPLICE SECTION.

MINIMUM REINFORCING SHALL BE AS FOLLOWS:  
 TRANSVERSE: 0.180 SQ. INCHES/ FT  
 LONGITUDINAL: 0.0120 SQ. INCHES/ FT

\* WWR SHEET SHALL BE GALVANIZED.  
 NO WWR ROLLS SHALL BE ALLOWED.

PROJECT NO. B-5937  
CURRITUCK COUNTY  
 BRIDGE NO. 16

DocuSigned by:  
*Trinity A. Spill*  
 AD50B1D977494DC...



12/8/2016

STATE OF NORTH CAROLINA  
 DEPARTMENT OF TRANSPORTATION  
 RALEIGH  
**WELDED WIRE REINFORCING LAYOUT AND DETAILS SPAN 154**

DRAWN BY : CL BRIGHT DATE : 09/16  
 CHECKED BY : TIM SHERRILL DATE : 10/16

DOCUMENT NOT CONSIDERED FINAL UNLESS ALL SIGNATURES COMPLETED

REVISIONS						SHEET NO.
NO.	BY:	DATE:	NO.	BY:	DATE:	TOTAL SHEETS
1			3			S-17
2			4			287