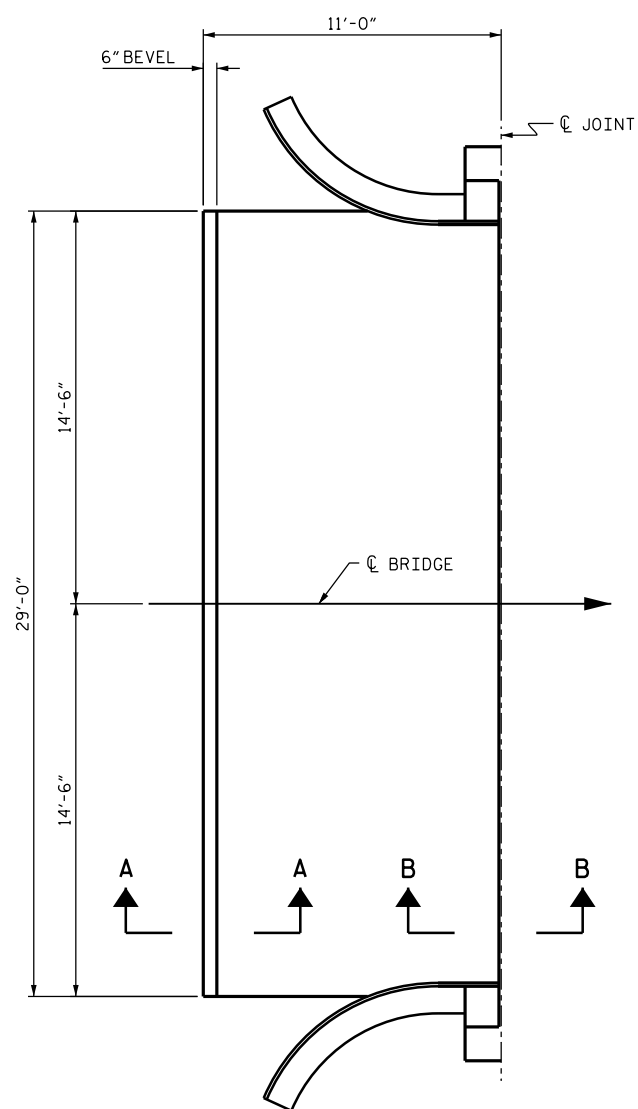
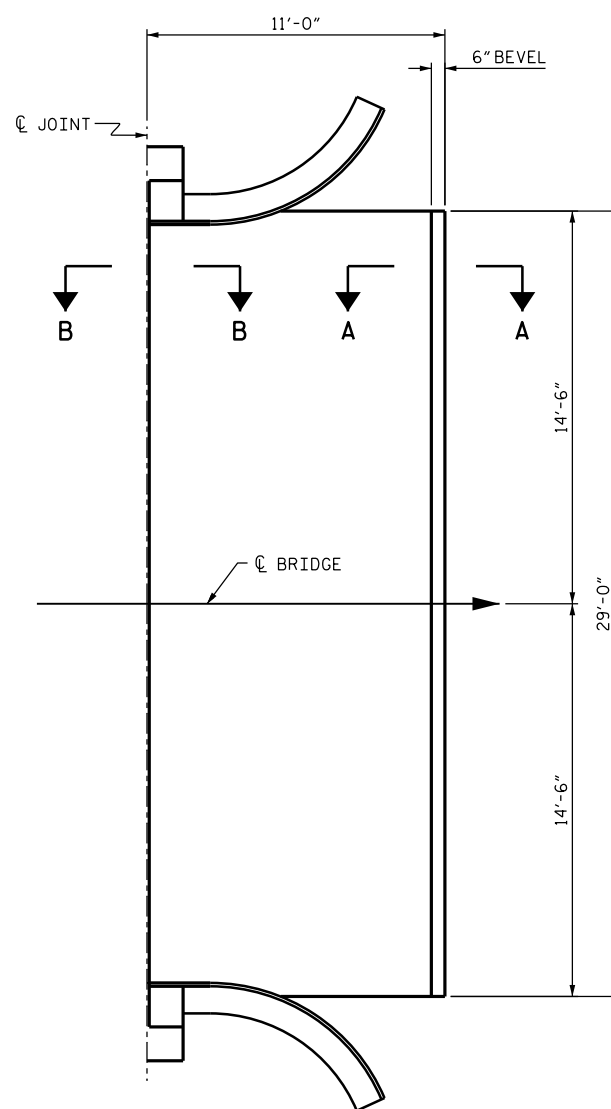


HARBINGER ←

→ KITTY HAWK



APPROACH SLAB 1



APPROACH SLAB 2

PLAN

NOTES

REPAIR LOCATIONS AND ESTIMATED QUANTITIES ARE GIVEN WITH THE BEST INFORMATION AVAILABLE. IF ADDITIONAL REPAIRS NOT SHOWN ON THE DRAWINGS ARE DEEMED NECESSARY BY THE ENGINEER, THE ENGINEER WILL NOTE ON THE DRAWINGS THE APPROXIMATE LOCATIONS AND DESCRIPTION OF THE REPAIRS AND ADJUST THE ACTUAL QUANTITIES ENTERED INTO THE AS-BUILT REPAIR QUANTITY TABLE.

CONCRETE COVER FOR TOP BARS IN THE DECK SLAB IS 1 7/8" PER THE EXISTING BRIDGE PLANS. ACTUAL CONCRETE COVER SHALL BE DETERMINED BY THE CONTRACTOR AND PRESENTED TO THE ENGINEER PRIOR TO BEGINNING SCARIFICATION.

CURRENT AVERAGE COVER IS EXPECTED TO BE FROM 1" TO 1 1/2" BASED ON VISUAL INSPECTION.

FOR SECTION A-A AND B-B, SEE "JOINT DETAILS" SHEET.

* MINOR QUANTITIES OF CLASS II AREAS ARE ANTICIPATED, PARTICULARLY NEAR JOINTS. HOWEVER, DUE TO THEIR SMALL SIZE, THE CLASS II LOCATIONS HAVE NOT BEEN DELINEATED ON THESE PLANS. THE CLASS II QUANTITIES INDICATED ARE ANTICIPATED TO BE SUFFICIENT FOR THE ACTUAL QUANTITIES ENCOUNTERED.

AS-BUILT REPAIR QUANTITY TABLE

TOP OF DECK REPAIRS		
APPROACH SLAB 1		
	ESTIMATE	ACTUAL
SCARIFYING BRIDGE DECK	35 SY	
CLASS II SURFACE PREPARATION	0.2 SY *	
SHOTBLASTING BRIDGE DECK	35 SY	
PPC MATERIALS	1.1 CY	
PLACING & FINISHING PPC OVERLAY	35 SY	
BRIDGE DECK GROOVING	252 SF	
APPROACH SLAB 2		
	ESTIMATE	ACTUAL
SCARIFYING BRIDGE DECK	35 SY	
CLASS II SURFACE PREPARATION	0.2 SY *	
SHOTBLASTING BRIDGE DECK	35 SY	
PPC MATERIALS	1.1 CY	
PLACING & FINISHING PPC OVERLAY	35 SY	
BRIDGE DECK GROOVING	252 SF	

PROJECT NO. B-5937
CURRITUCK COUNTY

BRIDGE NO. 16

SHEET 1 OF 4

DocuSigned by:
Timothy M. Sherrill
 AD50B1D977494CC...



12/8/2016

STATE OF NORTH CAROLINA
 DEPARTMENT OF TRANSPORTATION
 RALEIGH

PLAN OF SPAN
 FOR APPROACH SLABS
 1 & 2

DRAWN BY : CL BRIGHT DATE : 10/16
 CHECKED BY : T. SHERRILL DATE : 10/16

REVISIONS						SHEET NO.
NO.	BY:	DATE:	NO.	BY:	DATE:	
1			3			S-10
2			4			TOTAL SHEETS 287

DOCUMENT NOT CONSIDERED
 FINAL UNLESS ALL
 SIGNATURES COMPLETED