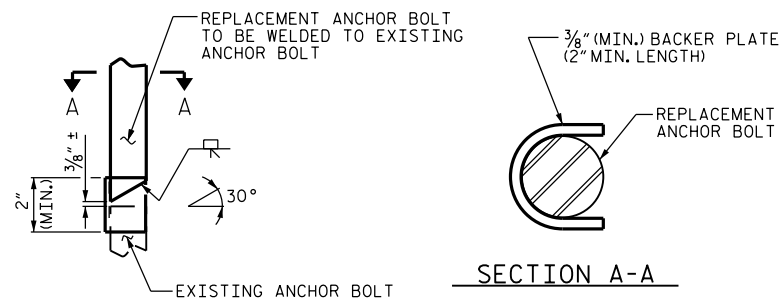


SECTION AT BEARING



DETAIL A

ANCHOR BOLT WELD DETAIL

CONSTRUCTION SEQUENCE:

JACK BRIDGE AND CHIP OUT AROUND DAMAGED ANCHOR BOLT. REMOVE CONCRETE BELOW UNDATED AREA ENOUGH TO CUT AND PREPARE FOR WELDING.

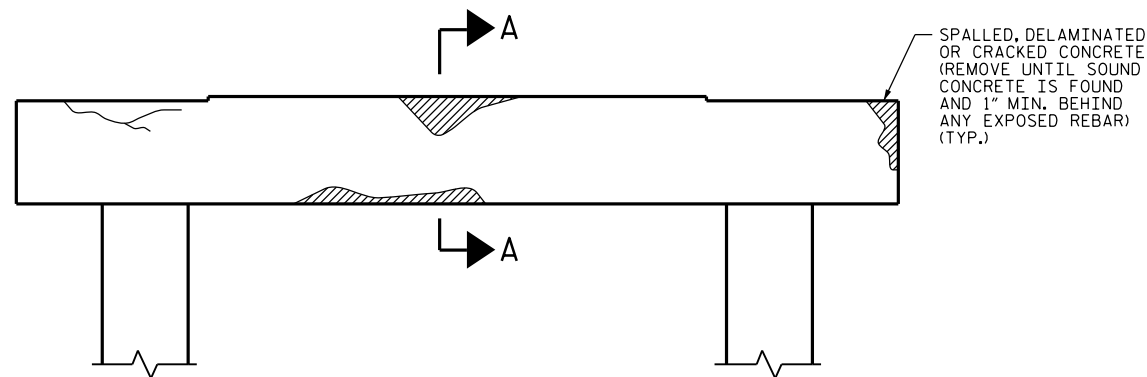
WELD ANCHOR BOLT AS SHOWN ABOVE.

ALL WELDS NEED TO BE APPROVED BY THE NCDOT MATERIALS AND TEST UNIT BEFORE RECASTING CONCRETE AT BRIDGE SEAT.

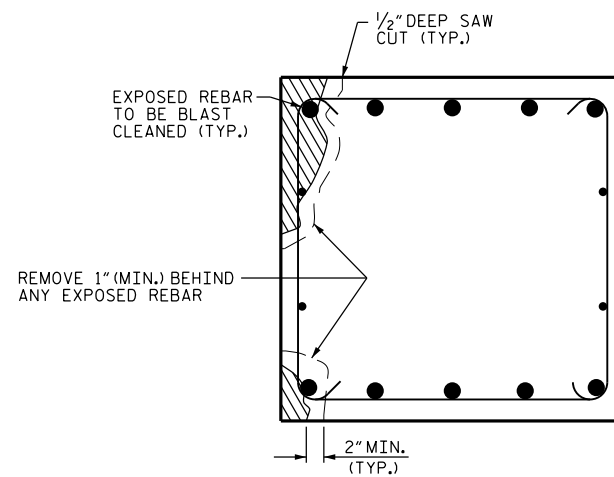
REPAIR BRIDGE SEAT IN ACCORDANCE WITH THE SPECIAL PROVISION FOR CONCRETE REPAIR.

REMOVE JACKS.

ANCHOR BOLT REPAIR

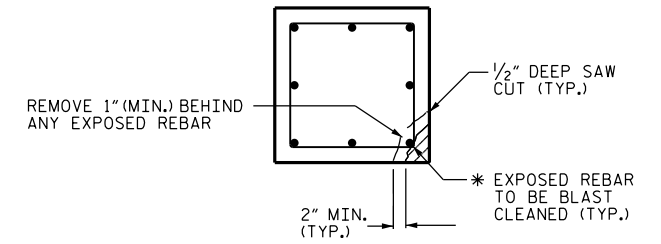


BENT CAP REPAIRS

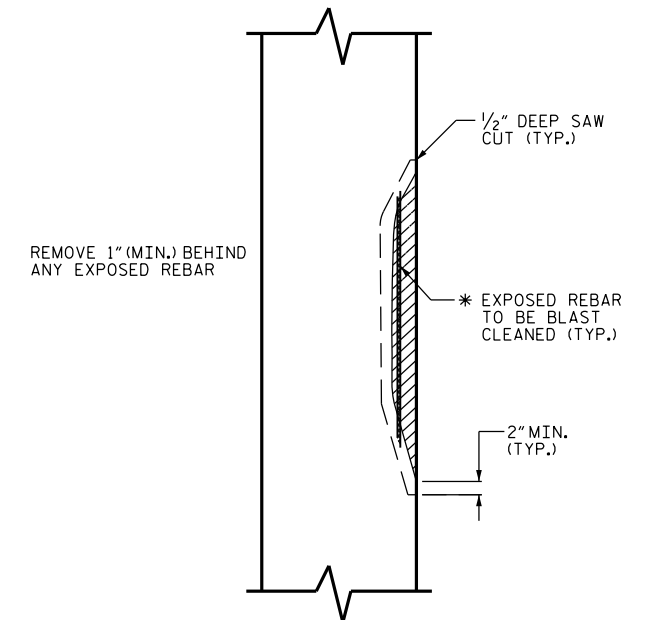


SECTION A-A

CAP REPAIR



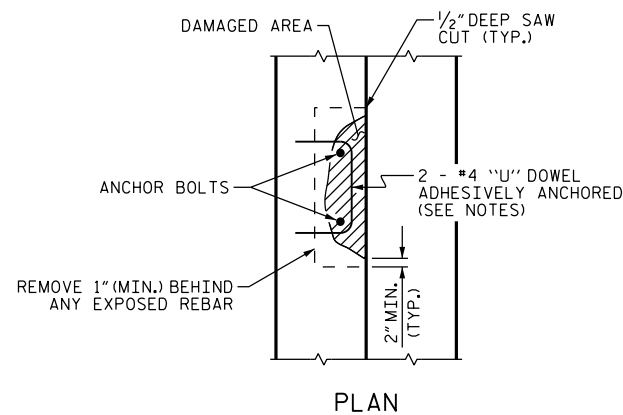
PLAN OF COLUMN



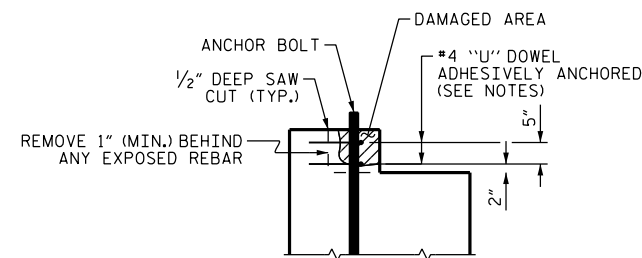
* REPAIR LENGTH SHALL NOT EXCEED 10 FEET.

ELEVATION OF COLUMN

COLUMN REPAIR



PLAN



ELEVATION

PEDESTAL WALL REPAIR

NOTE

TYPICAL REPAIRS FOR BENT CAP ARE SHOWN. REPAIR DETAILS SIMILAR FOR END BENT CAPS AND STRUTS.

THE #4 "U" DOWELS ARE REQUIRED ONLY AROUND THE ANCHOR BOLTS. THE EXISTING REINFORCING STEEL IN THE PEDESTAL WALL SHALL BE CLEANED, STRAIGHTENED AND REMAIN IN PLACE.

FOR ADHESIVELY ANCHORED ANCHOR BOLTS OR DOWELS, SEE STANDARD SPECIFICATIONS.

PROJECT NO. I-5892
BUNCOMBE COUNTY
 BRIDGE NO. 412, 415, 421, 422
429, 827

DocuSigned by:
John A. Yannaccone
 7BC60000000000000000000000000000
 NORTH CAROLINA PROFESSIONAL ENGINEER SEAL 32492 JOHN A. YANNAACONE
 1/21/2017

STATE OF NORTH CAROLINA
 DEPARTMENT OF TRANSPORTATION
 RALEIGH
TYPICAL CAP AND COLUMN REPAIR DETAILS

DRAWN BY : CL BRIGHT DATE : 06/16
 CHECKED BY : J. YANNAACONE DATE : 06/16

DOCUMENT NOT CONSIDERED FINAL UNLESS ALL SIGNATURES COMPLETED

| REVISIONS | | | | | | SHEET NO. |
|-----------|-----|-------|-----|-----|-------|--------------|
| NO. | BY: | DATE: | NO. | BY: | DATE: | S-68 |
| 1 | | | 3 | | | TOTAL SHEETS |
| 2 | | | 4 | | | 68 |