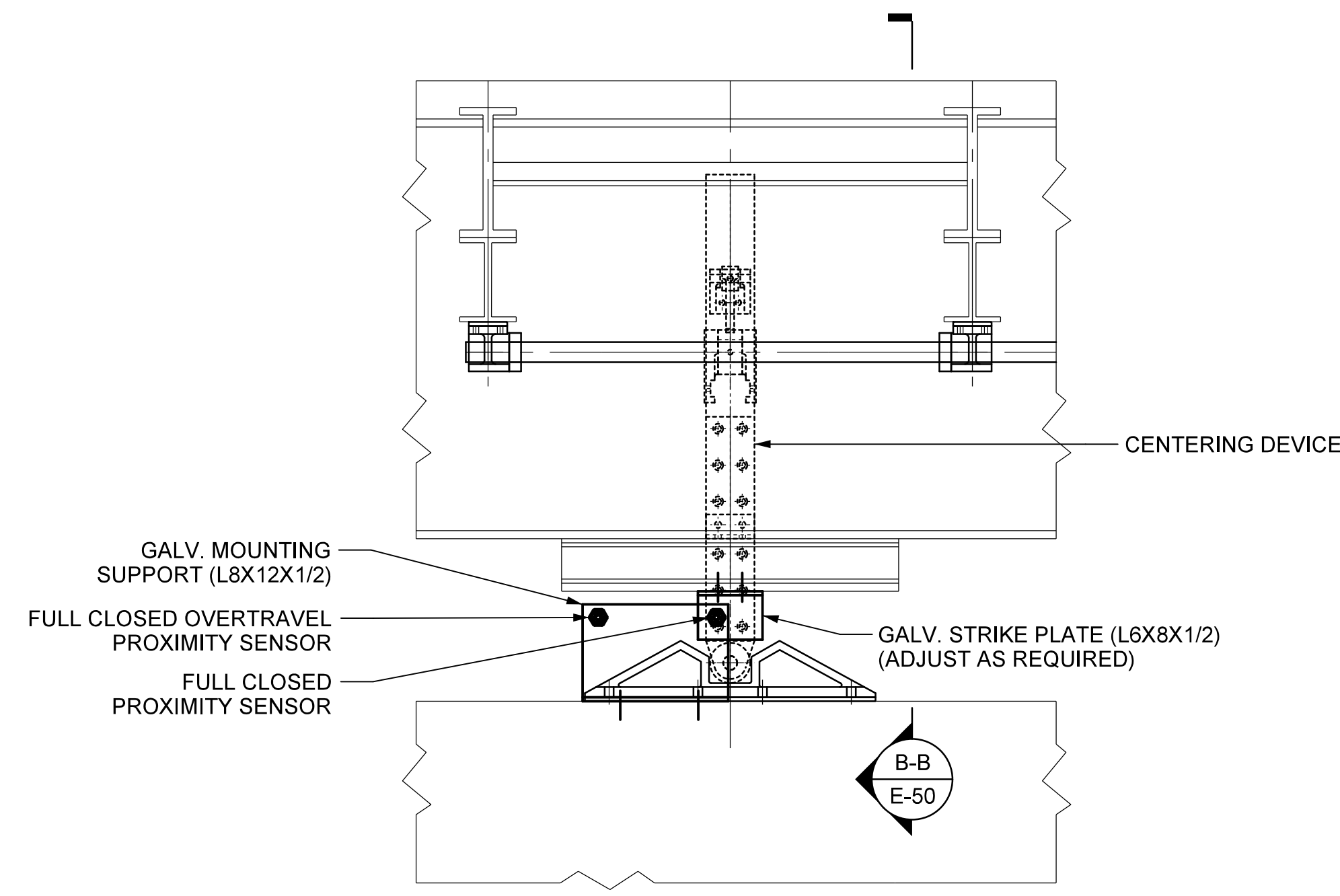
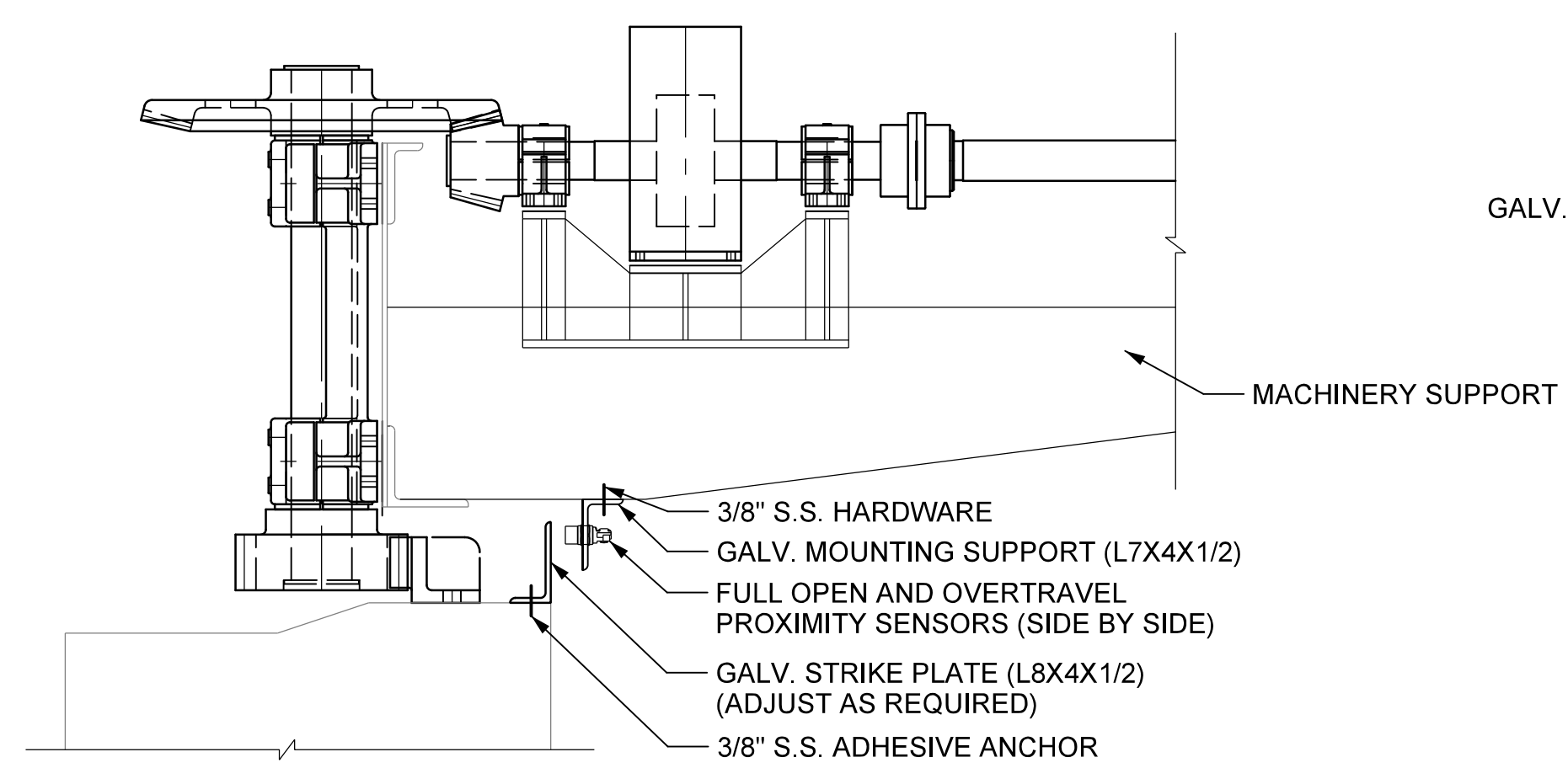


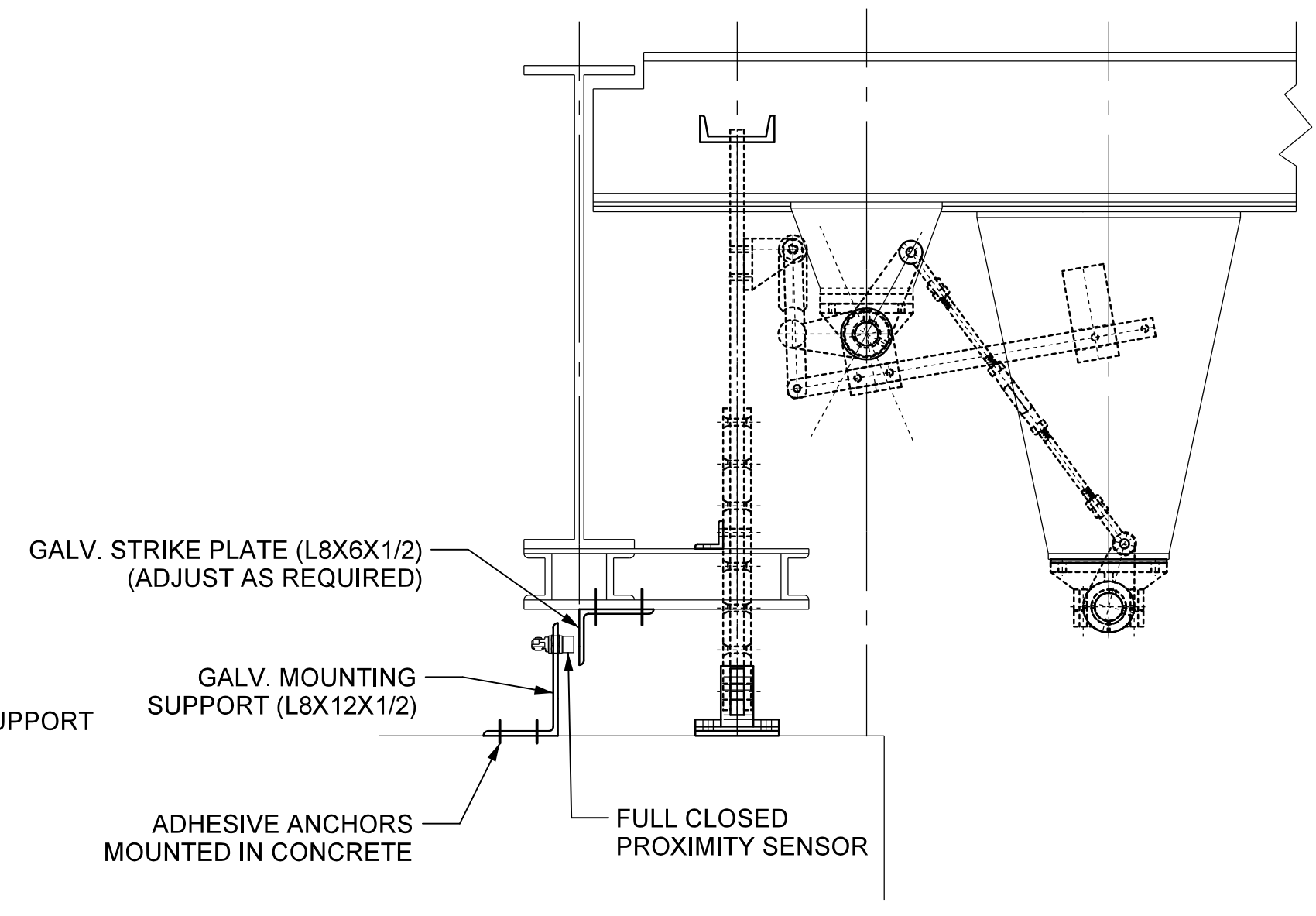
LIMIT SWITCH LAYOUT ON PIVOT PIER
SCALE: 3/16" = 1'-0"



**EAST ELEVATION
END WEDGE MACHINERY**
SCALE: 3/4" = 1'-0"



SECTION A-A (IN FULL OPEN POSITION)
SCALE: 3/4" = 1'0"



SECTION B-B (IN CLOSED POSITION)
SCALE: 3/4" = 1'-0"

NOTES:

1. THE CONTRACTOR SHALL FURNISH AND INSTALL A WEDGE HAND CRANK LIMIT SWITCH TO THE UNUSED INPUT SHAFT OF THE WEDGE SPEED REDUCER. THE LIMIT SWITCH SHALL INCLUDE A COVER AND SHALL BE ORIENTED SUCH THAT THE OPENING OF THE COVER WILL OPEN THE LIMIT SWITCH AND CAUSE THE WEDGE MOTOR TO BECOME INOPERABLE.
2. FULL OPEN, FULL CLOSED AND OVERTRAVEL LIMIT SWITCHES SHALL BE HAVE A MAXIMUM SENSING RANGE OF 1-1/2" AND SHALL BE APPROVED EQUAL TO THE TURK INDUCTIVE PROXIMITY SENSOR PART NO. NI40-G47SR.
3. ALL MOUNTING HARDWARE SOWN SHALL BE TYPE 3.16 S.S (MINIMUM SIZE OF 3/8" DIA.)
4. ALL SUPPORTS AND STRIKE PLATES SHALL BE GALV. STEEL WITH A MINIMUM THICKNESS OF 1/2".
5. THE CONTRACTOR SHALL MAKE THE NECESSARY ADJUSTMENT TO THE DETAILS SHOWN FOR PROPER OPERATION OF THE LIMIT SWITCHES.
6. CONTRACTOR TO PROVIDE SAFETY INTERLOCKING LIMIT SWITCH FOR AUXILIARY SYSTEM TO PREVENT OPERATION OF THE MAIN SPAN MOTOR WHILE THE AUXILIARY SYSTEM IS ENGAGED. DETAILS SHALL BE SUBMITTED FOR REVIEW AND APPROVAL.
7. WEDGE AND SPAN ROTARY CAM LIMIT SWITCH SHALL BE INSTALLED IN THE EXISTING LOCATIONS.

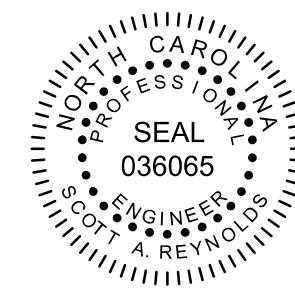
PROJECT NO. B-5936
TYRRELL COUNTY
BRIDGE NO: 7

STATE OF NORTH CAROLINA
DEPARTMENT OF TRANSPORTATION
RALEIGH

**LIMIT SWITCHES
DETAILS**

**ALLIGATOR RIVER
SWING SPAN**

DocuSigned by:
Scott Reynolds
BFC5720F614B0
9/14/2016



DRAWN BY: _QIV DATE: 8/8/2016
CHECKED BY: _MJT DATE: 8/8/2016
DESIGN ENGINEER OF RECORD: _CHS DATE: 8/8/2016

DWG NUMBER	TOTAL DWGS
66	90

DOCUMENT NOT CONSIDERED
FINAL UNLESS ALL
SIGNATURES COMPLETED

REVISIONS						SHEET NO. E-50
NO	BY	DATE	NO	BY	DATE	
1			3			TOTAL SHEETS 51
2			4			