

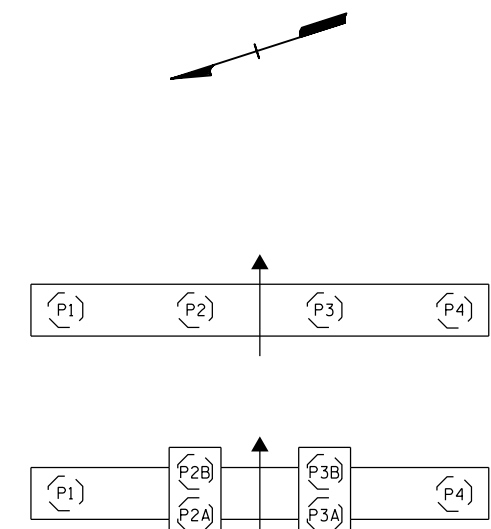
PILE REPAIRS				
BENT	PILE	TYPE	JACKET LENGTH	
			EST. LF	ACTUAL LF
222	1	1	9	
222	2	1	9	
222	3	1	9	
222	4	1	9	
223	1	1	8	
223	3	1	8	
223	4	1	8	
224	4	1	8	
224	2a	1	8	
224	2b	1	8	
224	3b	1	8	
225	1	1	9	
225	2	1	9	
225	3	1	9	
226	3	1	10	
227	1	1	8	
227	3	1	8	
228	4	1	10	
228	2a	1	9	
228	2b	1	9	
229	1	1	8	
229	2	1	8	
229	3	1	8	
229	4	1	8	
230	2	1	8	
231	1	1	14	
231	2	1	11	
232	4	1	8	
232	2b	1	8	
232	3a	1	8	
233	1	1	9	
233	6	1	8	
234	1	1	8	
234	2	1	9	
234	3	1	9	
235	2	1	14	
235	3	1	8	
235	4	1	9	
236	1	1	10	
236	2b	1	9	
236	3a	1	9	
236	3b	1	9	
237	1	1	9	
237	2	1	9	
237	3	1	9	

PILE REPAIRS				
BENT	PILE	TYPE	JACKET LENGTH	
			EST. LF	ACTUAL LF
237	4	1	9	
237	5	1	14	
238	1	1	14	
238	2	1	8	
238	5	1	14	
238	6	1	8	
239	2	1	8	
239	3	1	9	
239	4	1	8	
239	6	1	10	
241	2	1	9	
241	4	1	8	
242	1	1	9	
242	2	1	9	
242	4	1	9	
243	2	1	9	
243	3	1	9	
243	4	1	9	
243	5	1	9	
244	1	1	14	
244	4	1	9	
245	1	1	8	
245	2	1	8	
246	1	1	14	
246	2	1	14	
247	2	1	10	
247	3	1	8	
247	4	1	8	
248	1	1	8	
248	4	1	8	
248	2b	1	8	
248	3b	1	8	
249	1	1	8	
249	2	1	8	
250	1	1	8	
250	2	1	8	
250	3	1	10	
250	4	1	9	
251	1	1	8	
251	3	1	8	
252	1	1	9	
252	4	1	8	
252	2b	1	9	
252	3a	1	8	
252	3b	1	8	

PILE REPAIRS				
BENT	PILE	TYPE	JACKET LENGTH	
			EST. LF	ACTUAL LF
253	1	1	9	
253	2	1	9	
253	3	1	9	
253	4	1	9	
254	1	1	8	
254	2	1	9	
254	3	1	8	
254	4	1	8	
254	5	1	8	
255	1	1	9	
255	2	1	9	
255	3	1	11	
255	4	1	9	
255	5	1	9	
256	1	1	8	
256	4	1	9	
256	2a	1	8	
256	2b	1	9	
256	3a	1	9	
256	3b	1	9	
257	1	1	9	
257	2	1	9	
257	3	1	9	
257	4	1	9	
258	2	1	8	
258	3	1	8	
258	4	1	8	
259	1	1	8	
259	3	1	8	
259	4	1	9	
260	1	1	9	
260	4	1	7	
260	2a	1	10	
260	2b	1	9	
260	3a	1	9	
260	3b	1	10	
261	1	1	8	
261	2	1	8	
261	3	1	11	
261	4	1	8	
261	5	1	9	
261	6	1	9	

SUMMARY OF QUANTITIES		
	QUANTITIES	
	ESTIMATE	ACTUAL
BENTS 222 - 261	LF	LF
TYPE 1	1184	
TYPE 2	0	
TYPE 3	0	
TOTAL	1184	

TYPE 1 REPAIR IS A CONCRETE PILE JACKET REPAIR.
 TYPE 2 REPAIR IS REJACKETING A CONCRETE PILE.
 TYPE 3 REPAIR IS REJACKETING A STEEL H-PILE.
 SEE SHT S-390 & S-391 FOR PILE JACKET REPAIR DETAILS.
 FOR PILE JACKETS, SEE SPECIAL PROVISIONS.



TYPICAL PILE NUMBERS
 BENTS WITH MORE PILES FOLLOW SIMILAR PATTERN

PROJECT NO. B-5936
TYRRELL COUNTY
 BRIDGE NO. 7
 SHEET 6 OF 7

DocuSigned by:
Robbie Weisz
 CEA153463B6D43D...
 8/11/2016

STATE OF NORTH CAROLINA
 DEPARTMENT OF TRANSPORTATION
 RALEIGH

PILE JACKET
 REPAIR TABLES

DRAWN BY : P.D. BRYANT DATE : 6/2016
 CHECKED BY : R. WEISZ DATE : 6/2016

REVISIONS						SHEET NO.
NO.	BY:	DATE:	NO.	BY:	DATE:	TOTAL SHEETS
1			3			S-388
2			4			394