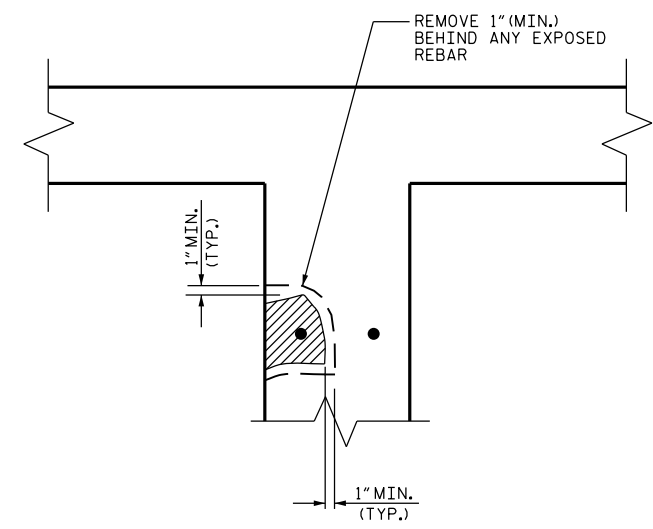


SECTION D-D



SECTION E-E

NOTES

CONTRACTOR SHALL REMOVE SURFACE CONCRETE TO VERIFY THAT SAWCUT DEPTH WILL NOT DAMAGE EXISTING REINFORCING STEEL OR PRESTRESSED TENDONS.

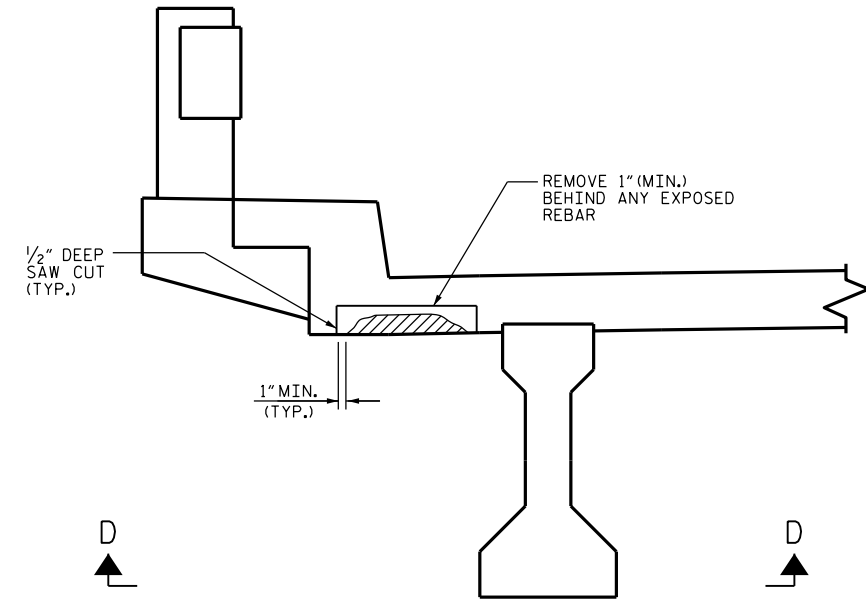
CONTRACTOR SHALL SAW CUT TO A NOMINAL DEPTH OF 1/2" BUT REINFORCING STEEL AND PRESTRESSED TENDONS SHALL NOT BE DAMAGED.

CONTRACTOR SHALL SAW CUT THE REPAIR AREAS SO THAT THE CORNERS ARE SQUARE AS INDICATED ON THE DETAILS.

FOR SHOTCRETE REPAIRS, SEE SPECIAL PROVISIONS.

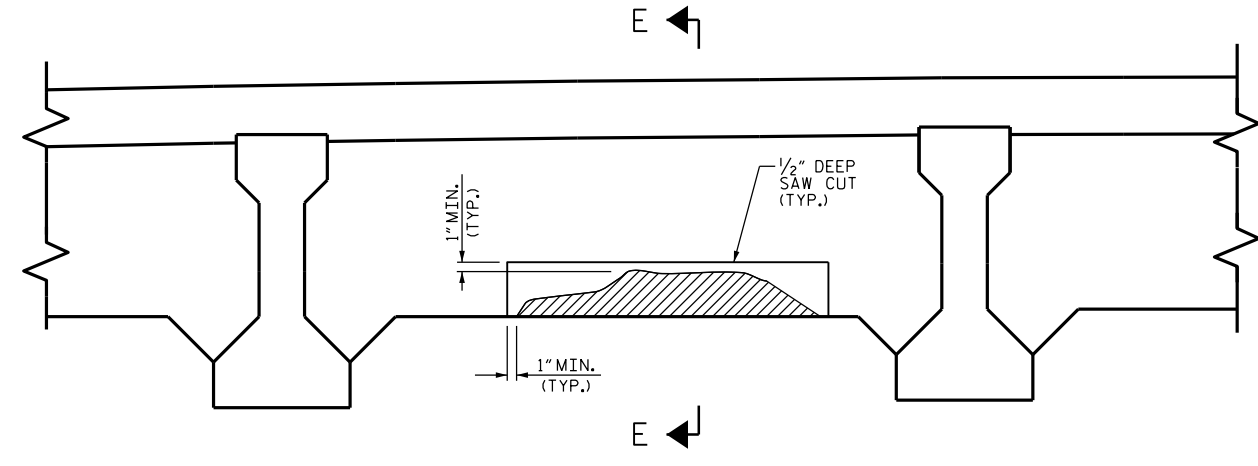
PRESTRESSED CONCRETE GIRDER FLANGE REPAIR MATERIAL MAY BE SUBSTITUTED IN LIEU OF SHOTCRETE REPAIRS WITH APPROVAL OF THE ENGINEER.

 DAMAGED AREA



TYPICAL SECTION

OVERHANG DETAILS



TYPICAL SECTION

INTERIOR DIAPHRAGM REPAIR DETAILS

PROJECT NO. B-5936
TYRRELL COUNTY
 BRIDGE NO. 7

SHEET 2 OF 2

1/11/2017



DocuSigned by:
Robbie Weisz

STATE OF NORTH CAROLINA
 DEPARTMENT OF TRANSPORTATION
 RALEIGH

TYPICAL OVERHANG & DIAPHRAGM REPAIR DETAILS

DRAWN BY : S. T. SANDOR DATE : 06/2016
 CHECKED BY : R. N. WEISZ DATE : 06/2016

| REVISIONS | | | | | | SHEET NO. |
|-----------|-----|-------|-----|-----|-------|--------------|
| NO. | BY: | DATE: | NO. | BY: | DATE: | TOTAL SHEETS |
| 1 | | | 3 | | | S-382 |
| 2 | | | 4 | | | 394 |

DOCUMENT NOT CONSIDERED FINAL UNLESS ALL SIGNATURES COMPLETED