

**NOTES**

CONTRACTOR SHALL REMOVE SURFACE CONCRETE TO VERIFY THAT SAWCUT DEPTH WILL NOT DAMAGE EXISTING REINFORCING STEEL OR PRESTRESSED TENDONS.

CONTRACTOR SHALL SAW CUT TO A NOMINAL DEPTH OF 1/2" BUT REINFORCING STEEL AND PRESTRESSED TENDONS SHALL NOT BE DAMAGED.

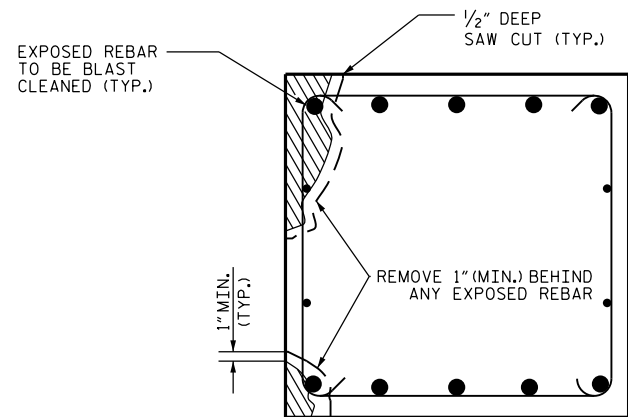
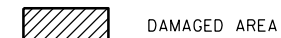
CONTRACTOR SHALL SAW CUT THE REPAIR AREAS SO THAT THE CORNERS ARE SQUARE AS INDICATED ON THE DETAILS.

ALL REPAIRS IN GIRDER FLANGE OR INCLUDING GIRDER FLANGE IN REPAIR SHALL BE PRESTRESSED CONCRETE GIRDER FLANGE REPAIR MATERIAL.

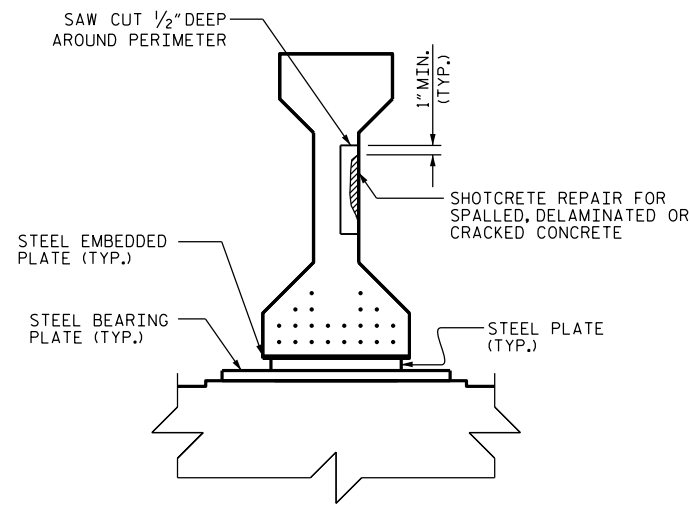
FOR PRESTRESSED CONCRETE GIRDER FLANGE REPAIR MATERIAL, SEE SPECIAL PROVISIONS.

FOR SHOTCRETE REPAIRS, SEE SPECIAL PROVISIONS.

PRESTRESSED CONCRETE GIRDER FLANGE REPAIR MATERIAL MAY BE SUBSTITUTED IN LIEU OF SHOTCRETE REPAIRS WITH APPROVAL OF THE ENGINEER.

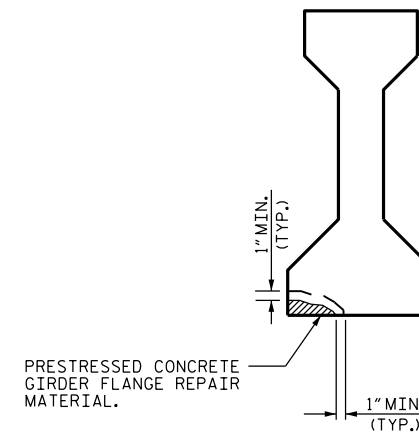


SECTION A-A



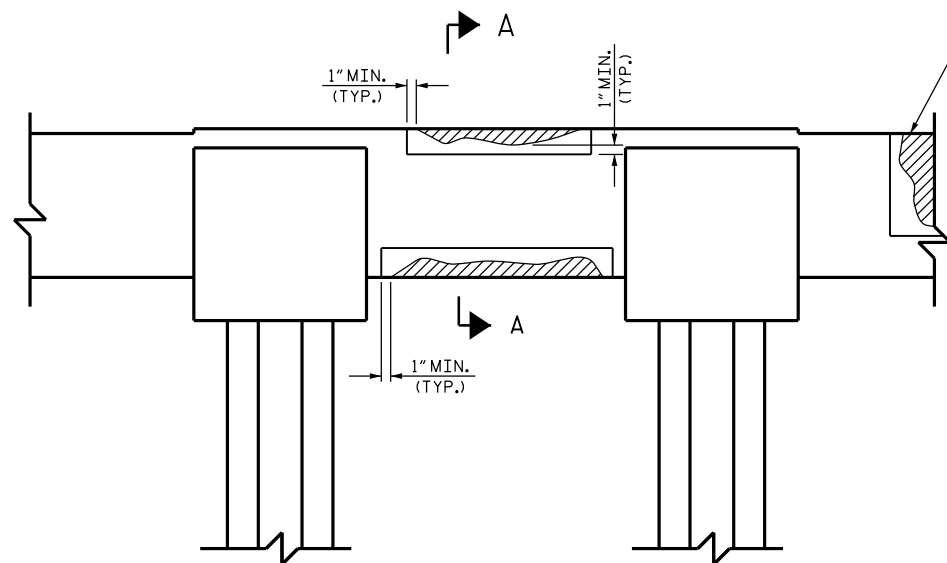
SECTION B-B

(IF MORE THAN HALF THE CIRCUMFERENCE OF REINFORCING BAR IS EXPOSED DURING THIS PROCESS, REMOVE ADDITIONAL CONCRETE BEHIND THE BAR. THIS DOES NOT APPLY TO PRESTRESSED STRANDS.)



SECTION C-C

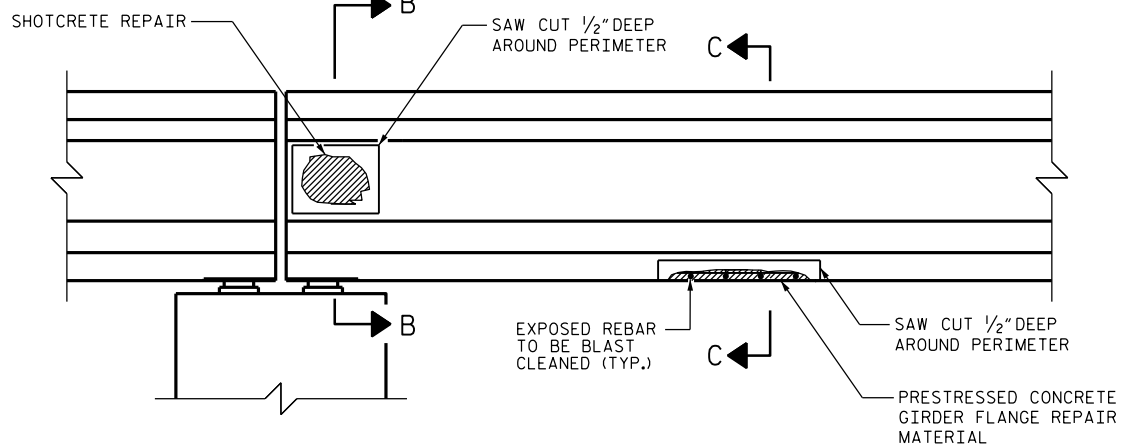
(ALL UNSOUND CONCRETE MUST BE REMOVED. HOWEVER, PRESTRESSED STRANDS SHOULD NOT BE DISTURBED UNLESS ABSOLUTELY NECESSARY. USE EXTREME CARE TO NOT DAMAGE STRANDS. PRESTRESSED STRANDS NOT SHOWN FOR CLARITY.)



BENT CAP REPAIRS

CAP REPAIR

SPALLED, DELAMINATED OR CRACKED CONCRETE (REMOVE UNTIL SOUND CONCRETE IS FOUND AND 1" MIN. BEHIND ANY EXPOSED REBAR) (TYP.)



ELEVATION

CONCRETE GIRDER REPAIR DETAIL

PROJECT NO. B-5936  
TYRRELL COUNTY  
 BRIDGE NO. 7

SHEET 1 OF 2

STATE OF NORTH CAROLINA  
 DEPARTMENT OF TRANSPORTATION  
 RALEIGH

**TYPICAL CAP & GIRDER REPAIR DETAILS**



DocuSigned by:  
*Robbie Weisz*

CEA153463B6D43D...

DOCUMENT NOT CONSIDERED FINAL UNLESS ALL SIGNATURES COMPLETED

REVISIONS						SHEET NO.
NO.	BY:	DATE:	NO.	BY:	DATE:	S-381
1			3			TOTAL SHEETS
2			4			394

DRAWN BY : S. T. SANDOR DATE : 10/2016  
 CHECKED BY : R. N. WEISZ DATE : 10/2016