

GIRDER, DIAPHRAGM, & DECK REPAIR TABLES						
SPAN	MEMBER	LENGTH FROM BENT (FT)	APPROX. REPAIR SIZE	ACTUAL REPAIR SIZE	LOCATION	BAY
29	G-2	@ BENT 28	3.5' X 0.8'		* BOTTOM FLANGE	2
29	G-3	@ BENT 28	0.5' X 0.5'		* BOTTOM FLANGE	3
29	G-3	@ BENT 28	1.5' X 1.3'		* BOTTOM FLANGE	2
29	G-3	4' FROM INTER. DIA.	0.7' X 0.7'		* BOTTOM FLANGE	2
29	G-4	@ BENT 28	3.5' X 1'		* BOTTOM FLANGE	3
29	G-4	@ BENT 29	1' X 0.6'		* BOTTOM FLANGE	3
29	G-4	6.5' FROM INTER. DIA.	3' X 0.7'		* BOTTOM FLANGE	3
30	G-1	@ BENT 29	5' X 1.5'		* BOTTOM FLANGE	1
30	G-1	@ BENT 30	0.5' X 0.6'		* BOTTOM FLANGE	1
30	G-2	@ BENT 29	3' X 0.7'		* BOTTOM FLANGE	1
30	G-2	@ BENT 30	0.5' X 0.6'		* BOTTOM FLANGE	1
30	G-3	@ BENT 29	1' X 0.6'		* BOTTOM FLANGE	3
30	G-3	@ BENT 30	1' X 0.6'		* BOTTOM FLANGE	3
30	G-3	@ BENT 30	1' X 0.6'		* BOTTOM FLANGE	2
30	G-3	4' FROM INTER. DIA.	0.7' X 0.7'		* BOTTOM FLANGE	2
30	G-4	@ BENT 29	1' X 0.6'		* BOTTOM FLANGE	3
30	G-4	@ BENT 30	0.7' X 0.6'		* BOTTOM FLANGE	3
31	G-1	@ BENT 30	0.5' X 0.6'		* BOTTOM FLANGE	RT EXT
31	G-1	@ BENT 31	1' X 0.6'		* BOTTOM FLANGE	1
31	G-3	4' FROM INTER. DIA.	2.7' X 0.7'		* BOTTOM FLANGE	2
32	G-1	@ BENT 32	0.8' X 0.6'		* BOTTOM FLANGE	1
32	G-2	@ BENT 32	0.8' X 0.6'		* BOTTOM FLANGE	1
32	G-2	@ BENT 32	0.8' X 0.6'		* BOTTOM FLANGE	2
32	G-3	1' FROM INTER. DIA.	2.5' X 0.6'		* BOTTOM FLANGE	2
32	G-3	@ BENT 31	5.5' X 0.8'		* BOTTOM FLANGE	2
32	G-3	@ BENT 32	0.8' X 0.6'		* BOTTOM FLANGE	2
32	G-4	@ BENT 31	1' X 0.8'		* BOTTOM FLANGE	3
33	G-1	@ BENT 32	2.5' X 0.5'		* BOTTOM FLANGE	1
33	G-1	@ BENT 33	5' X 1'		* BOTTOM FLANGE	LT EXT
33	G-2	@ BENT 32	3.7' X 0.8'		* BOTTOM FLANGE	1
33	G-2	@ BENT 32	1' X 0.6'		* BOTTOM FLANGE	2
33	G-2	@ BENT 33	0.3' X 0.6'		* BOTTOM FLANGE	1
33	G-3	@ BENT 32	7.0' X 0.4'		* BOTTOM FLANGE	2
33	G-4	@ BENT 32	0.9' X 0.9'		* BOTTOM FLANGE	3
33	G-4	@ BENT 33	0.5' X 0.7'		* BOTTOM FLANGE	3
34	G-2	@ BENT 33	0.4' X 1.5'		* BOTTOM FLANGE	1
34	G-2	@ BENT 34	2.3' X 1'		* BOTTOM FLANGE	1
34	G-2	@ BENT 34	0.6' X 0.6'		* BOTTOM FLANGE	2
34	G-3	@ BENT 33	2.2' X 1.5'		* BOTTOM FLANGE	2
34	G-3	@ BENT 34	1.5' X 0.6'		* BOTTOM FLANGE	2
35	G-2	@ BENT 34	3.5' X 0.8'		* BOTTOM FLANGE	1
35	G-3	@ BENT 34	0.8' X 0.7'		* BOTTOM FLANGE	2
35	G-3	@ BENT 35	0.5' X 0.6'		* BOTTOM FLANGE	2
36	END DIA.	@ BENT 36	3.5' X 1'		DIAPHRAGM	3
36	G-1	@ BENT 35	1' X 1.5'		* BOTTOM FLANGE	LT EXT
36	G-1	@ BENT 35	0.6' X 0.6'		* BOTTOM FLANGE	1
36	G-1	@ BENT 36	1' X 0.4'		* BOTTOM FLANGE & WEB	LT EXT
36	G-2	@ BENT 35	0.5' X 0.1'		* BOTTOM FLANGE	1
36	G-2	@ BENT 35	0.9' X 0.6'		* BOTTOM FLANGE	1

GIRDER, DIAPHRAGM, & DECK REPAIR TABLES						
SPAN	MEMBER	LENGTH FROM BENT (FT)	APPROX. REPAIR SIZE	ACTUAL REPAIR SIZE	LOCATION	BAY
36	G-3	@ BENT 35	3' X 1.3'		* BOTTOM FLANGE	2
36	G-3	@ BENT 35	1' X 0.8'		* BOTTOM FLANGE	3
36	G-3	7' FROM INTER. DIA.	3.8' X 0.5'		* BOTTOM FLANGE	2
36	G-4	@ BENT 35	1' X 0.4'		* BOTTOM FLANGE	3
36	G-4	@ BENT 35	1.5' X 0.8'		* BOTTOM FLANGE	3
37	G-1	@ BENT 36	0.8' X 0.6'		* BOTTOM FLANGE	1
37	G-1	@ BENT 37	2.8' X 0.6'		* BOTTOM FLANGE	1
37	G-2	@ BENT 37	0.8' X 0.6'		* BOTTOM FLANGE	1
37	G-3	@ BENT 36	5' X 0.5'		* BOTTOM FLANGE	2
37	G-3	@ BENT 36	0.6' X 0.6'		* BOTTOM FLANGE	3
37	G-3	14.5' FROM BENT 37	3' X 0.6'		* BOTTOM FLANGE	2
37	G-3	@ BENT 37	1.4' X 0.7'		* BOTTOM FLANGE	2
37	G-4	@ BENT 36	2.8' X 0.7'		* BOTTOM FLANGE	3
37	G-4	14.5' FROM BENT 37	2.8' X 0.6'		* BOTTOM FLANGE	RT EXT
38	G-1	@ BENT 37	0.8' X 0.5'		* BOTTOM FLANGE	1
38	G-2	@ BENT 37	0.8' X 0.4'		* BOTTOM FLANGE	2
38	G-2	@ BENT 38	5.5' X 1.4'		* BOTTOM FLANGE	1
38	G-3	3' FROM BENT 37	2' X 0.5'		* BOTTOM FLANGE	2
38	G-3	@ BENT 37	3' X 0.5'		* BOTTOM FLANGE	2
38	G-3	@ BENT 37	0.6' X 0.3'		* BOTTOM FLANGE & WEB	2
38	G-3	@ BENT 37	1.8' X 0.6'		* BOTTOM FLANGE	3
38	G-4	25' FROM BENT 37	2.2' X 0.4'		* BOTTOM FLANGE	3
38	G-4	13.5' FROM BENT 38	6' X 0.5'		* BOTTOM FLANGE	3
38	G-4	@ BENT 37	0.8' X 0.6'		* BOTTOM FLANGE	3
38	G-4	@ BENT 37	2.2' X 1.7'		* BOTTOM FLANGE & WEB	3
38	G-4	@ BENT 37	0.6' X 0.3'		* BOTTOM FLANGE	RT EXT
39	G-1	@ BENT 39	0.3' X 0.5'		* BOTTOM FLANGE	LT EXT
39	G-2	@ BENT 39	1.3' X 1.2'		* BOTTOM FLANGE	2
39	G-4	27.5' FROM BENT 38	6.4' X 0.6'		* BOTTOM FLANGE	3
40	G-2	@ BENT 40	0.8' X 0.3'		* BOTTOM FLANGE	1
40	G-3	@ BENT 40	1' X 0.7'		* BOTTOM FLANGE	3
40	G-3	@ BENT 40	0.9' X 0.7'		* BOTTOM FLANGE	2
40	G-4	@ BENT 40	1.9' X 1.3'		* BOTTOM FLANGE	3
41	G-2	@ BENT 40	1.8' X 0.3'		* BOTTOM FLANGE	1
41	G-3	30' FROM BENT 40	4' X 0.5'		* BOTTOM FLANGE	2
41	G-4	@ BENT 40	0.9' X 0.5'		* BOTTOM FLANGE	3
41	G-4	@ BENT 41	0.7' X 0.7'		* BOTTOM FLANGE	RT EXT
43	G-1	@ BENT 42	2.9' X 0.8'		* BOTTOM FLANGE	LT EXT
43	G-2	@ BENT 42	4.7' X 0.5'		* BOTTOM FLANGE	1
43	G-3	@ BENT 42	1.3' X 0.8'		* BOTTOM FLANGE	2
43	G-3	@ BENT 42	1.4' X 0.8'		* BOTTOM FLANGE	3
43	G-4	@ BENT 43	1' X 0.8'		* BOTTOM FLANGE	3
43	G-4	@ BENT 42	0.5' X 0.7'		* BOTTOM FLANGE	3
43	G-4	@ BENT 42	0.6' X 0.6'		* BOTTOM FLANGE	RT EXT
44	G-1	@ BENT 43	0.8' X 0.5'		* BOTTOM FLANGE	1
44	G-1	@ BENT 44	1' X 0.5'		* BOTTOM FLANGE	1
44	G-2	@ BENT 43	0.8' X 0.2'		* BOTTOM FLANGE	1
44	G-2	@ BENT 44	1' X 0.8'		* BOTTOM FLANGE	2
44	G-3	@ BENT 43	1.5' X 0.8'		* BOTTOM FLANGE	2

REPAIR QUANTITY TABLE					
	QUANTITIES				
	ESTIMATE		ACTUAL		
	AREA SF	VOLUME CF	AREA SF	DEPTH FT	VOLUME CF
SHOTCRETE					
GIRDERS	0.00	0.00			
DIAPHRAGMS	3.50	1.75			
DECK	0.00	0.00			
PRESTRESSED CONCRETE GIRDER FLANGE REPAIR MATERIAL	AREA SF	VOLUME CF	AREA SF	DEPTH FT	VOLUME CF
GIRDERS	133.95	39.07			

VALUES IN CHART REPRESENT ESTIMATED REPAIR TOTALS AFTER REMOVAL OF UNSOUND CONCRETE, MIN. OF 1" BEHIND REBAR AND MIN. 1" CL TO SAWCUT. SEE REPAIR DETAILS.

FOR SHOTCRETE REPAIRS, SEE SPECIAL PROVISIONS.

FOR PRESTRESSED CONCRETE GIRDER FLANGE REPAIR MATERIAL, SEE SPECIAL PROVISIONS.

CONTRACTOR MAY ELECT TO USE PRESTRESSED CONCRETE GIRDER FLANGE REPAIR MATERIAL IN LIEU OF SHOTCRETE.

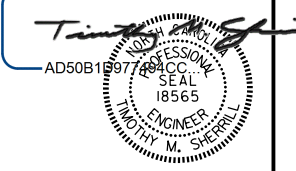
\* ALL REPAIRS IN GIRDER FLANGE OR INCLUDING GIRDER FLANGE IN REPAIR SHALL BE PRESTRESSED CONCRETE GIRDER FLANGE REPAIR MATERIAL.

SPAN 29-44

PROJECT NO. B-5936  
TYRRELL COUNTY  
BRIDGE NO. 7

SHEET 5 OF 22

DocuSigned by:



1/13/2017

STATE OF NORTH CAROLINA  
DEPARTMENT OF TRANSPORTATION  
RALEIGH

GIRDER, DIAPHRAGM & UNDERDECK REPAIRS

DRAWN BY: M.A.LEE DATE: 6/2016  
CHECKED BY: T.SHERRILL DATE: 6/2016  
DESIGN ENGINEER OF RECORD: T.SHERRILL DATE: 6/2016

REVISIONS						SHEET NO.
NO.	BY:	DATE:	NO.	BY:	DATE:	
1			3			5-20
2			4			TOTAL SHEETS 394