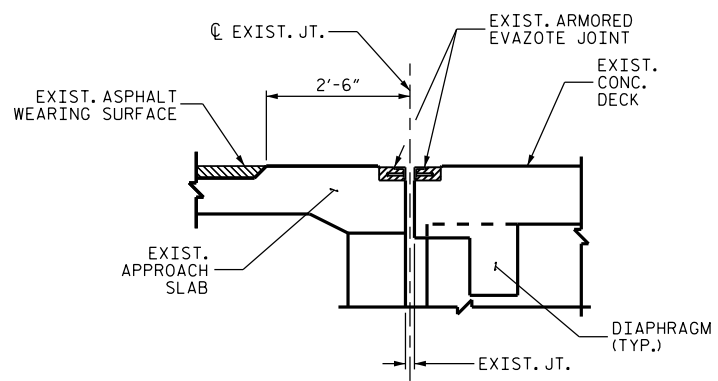


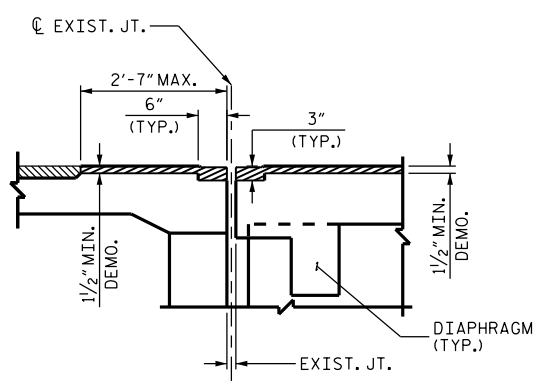
ELASTOMERIC CONCRETE		
END BENT 1	13.8	(CU. FT.)
END BENT 2	13.8	(CU. FT.)
* TOTAL	27.6	(CU. FT.)

\* BASED ON THE MINIMUM BLOCKOUT SHOWN.

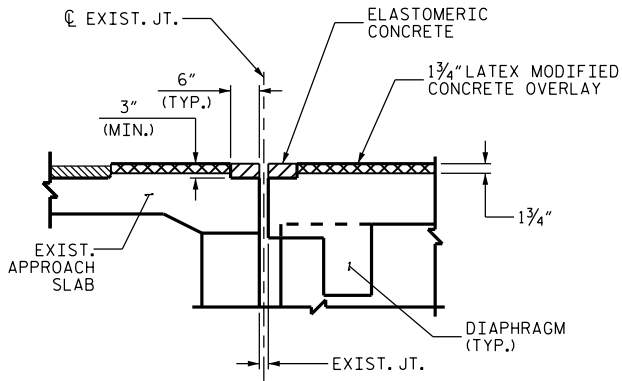
**NOTES**  
 FOR FOAM JOINT SEAL, SEE SPECIAL PROVISIONS.  
 THE INSTALLED FOAM JOINT SEALS SHALL BE WATERTIGHT.  
 NOMINAL UNCOMPRESSED SEAL WIDTH OF FOAM JOINT SEAL SHALL BE 2" AT END BENT 1 AND END BENT 2.  
 THE CONTRACTOR WILL NOT BE PERMITTED TO FORM THE JOINT FOR THE FOAM JOINT SEAL IN LIEU OF SAWING THE JOINT.



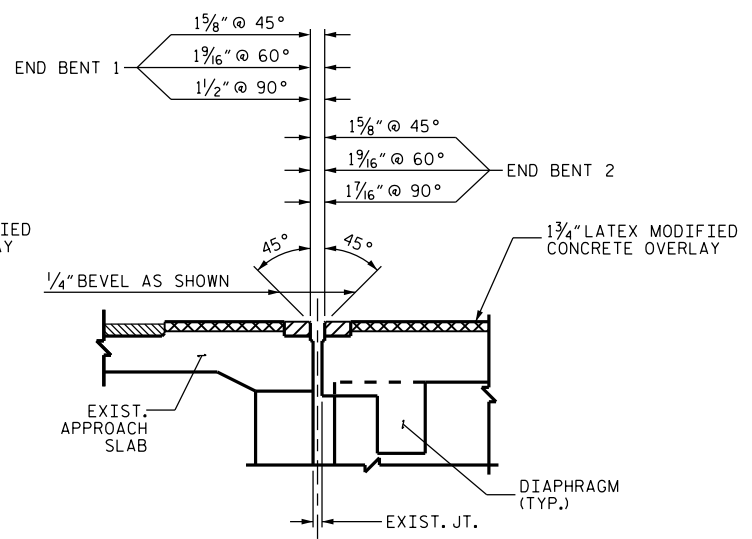
EXISTING JOINT



MINIMUM EXISTING JOINT DEMOLITION



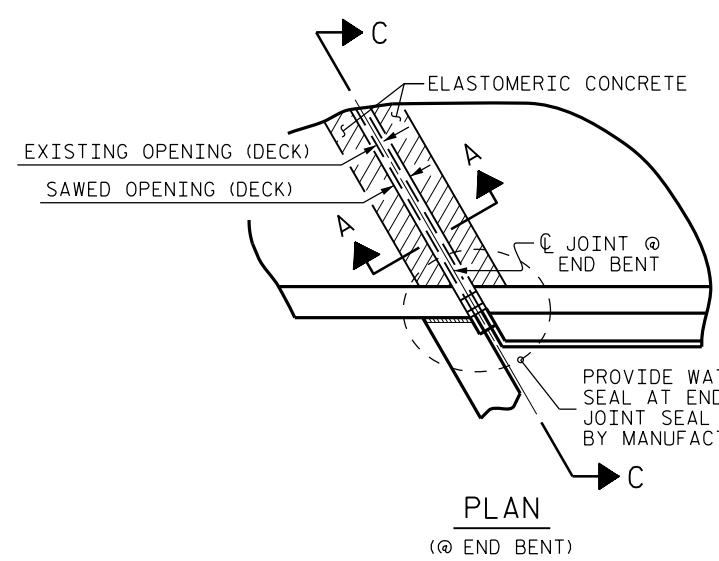
PROPOSED JOINT PRE-SAWED



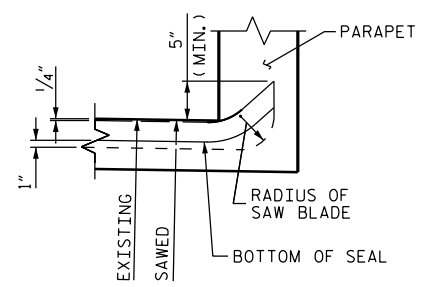
PROPOSED FOAM JOINT SEAL

**SECTION A-A**

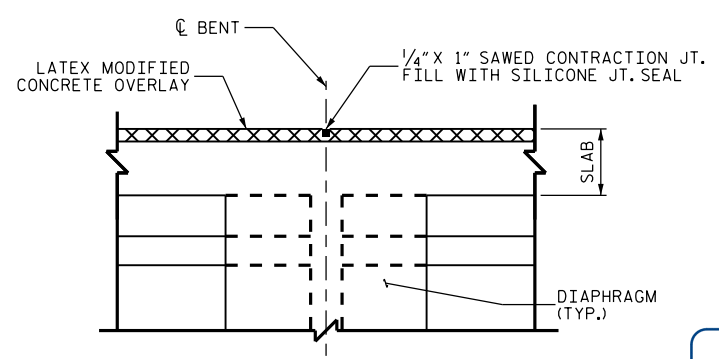
DEMOLISH BRIDGE JOINT AREA TO THE NECESSARY DEPTH, SUCH THAT ELASTOMERIC CONCRETE SHALL BE FOUNDED ON CONCRETE OR REPAIR CONCRETE SUBSTRATE, NOT LATEX MODIFIED CONCRETE.



PLAN  
(@ END BENT)



SECTION C-C  
 FOAM JOINT SEAL SHALL BE FACTORY FORMED OR CUT, HEAT WELDED AND TURNED UP PARALLEL TO FACE OF PARAPET.



SECTION B-B  
 PROPOSED CONTRACTION JOINT SEAL @ BENTS 1, 2, & 3

PROJECT NO. I-5809  
McDOWELL COUNTY  
 STATION: 155

DocuSigned by:  
*John A. Yannaccone*  
 7BC3...  
 NORTH CAROLINA  
 PROFESSIONAL  
 SEAL  
 32492  
 ENGINEER  
 JOHN A. YANNACCONE  
 9/27/2016

STATE OF NORTH CAROLINA  
 DEPARTMENT OF TRANSPORTATION  
 RALEIGH

**JOINT DETAILS**

DRAWN BY : R.L. PUTEK DATE : 07/16  
 CHECKED BY : J. YANNACCONE DATE : 07/16

REVISIONS						SHEET NO.
NO.	BY:	DATE:	NO.	BY:	DATE:	TOTAL SHEETS
1			3			68
2			4			

DOCUMENT NOT CONSIDERED FINAL UNLESS ALL SIGNATURES COMPLETED