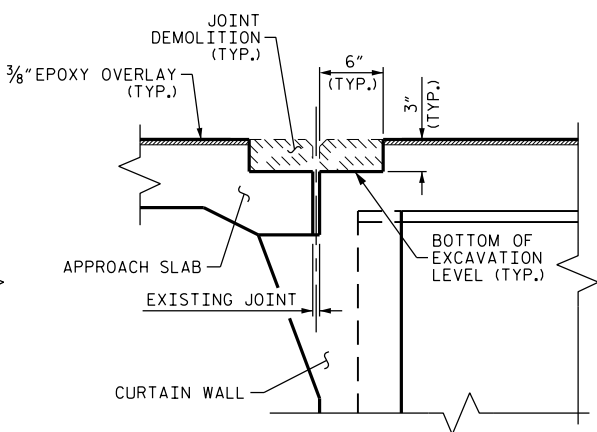
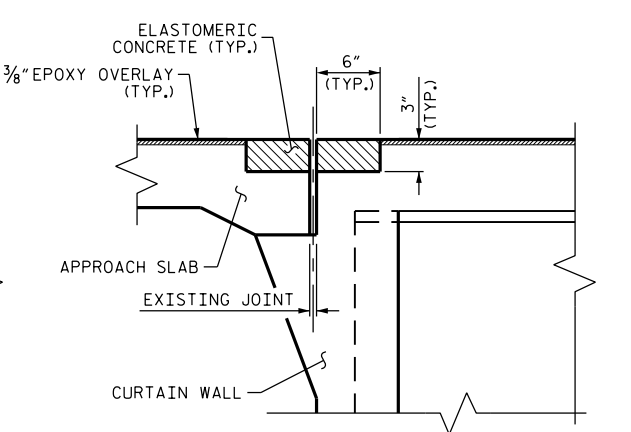


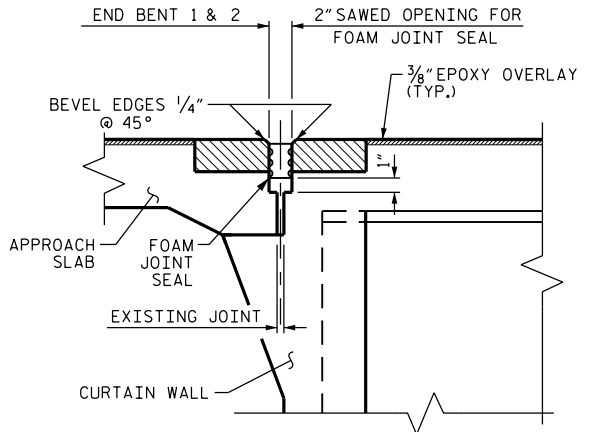
EXISTING JOINT



MINIMUM EXISTING JOINT DEMOLITION

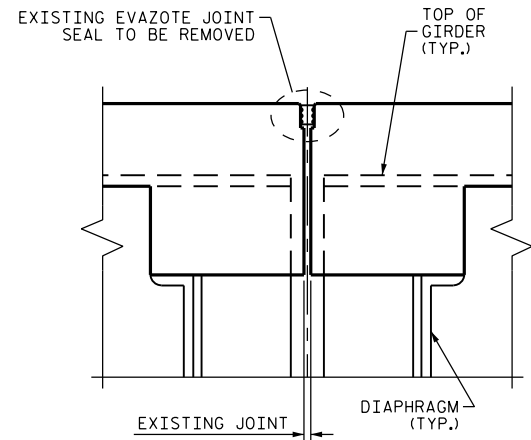


PROPOSED JOINT PRE-SAWED

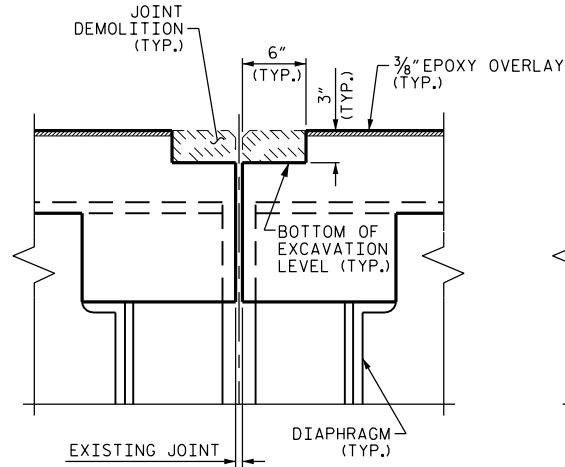


PROPOSED FOAM JOINT SEAL

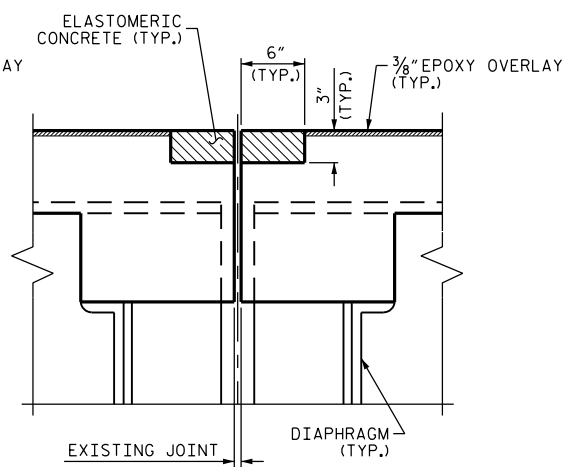
SECTION A-A



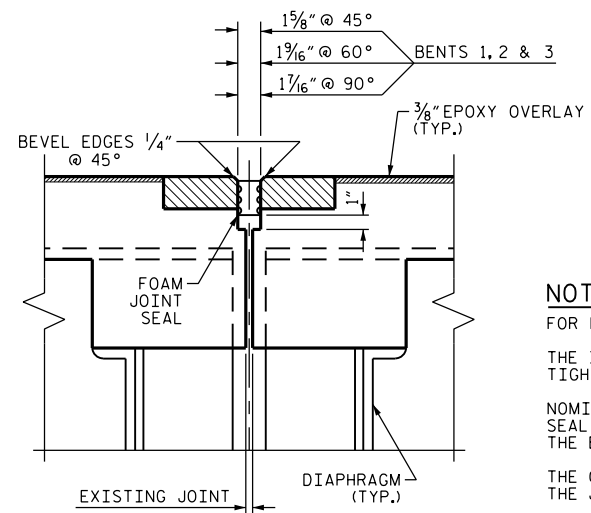
EXISTING JOINT



MINIMUM EXISTING JOINT DEMOLITION



PROPOSED JOINT PRE-SAWED



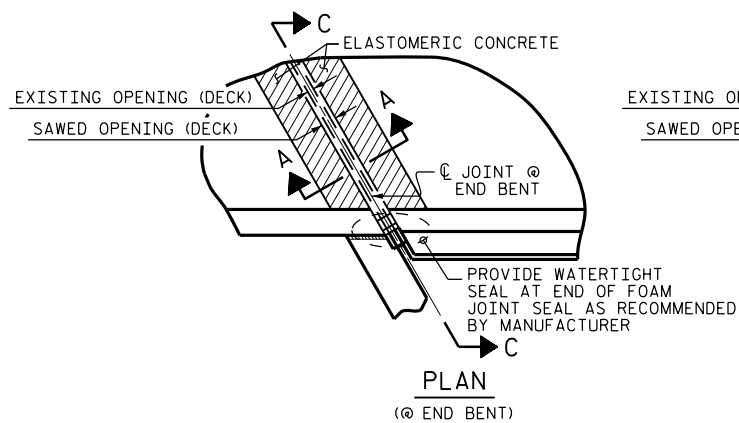
PROPOSED FOAM JOINT SEAL

SECTION B-B

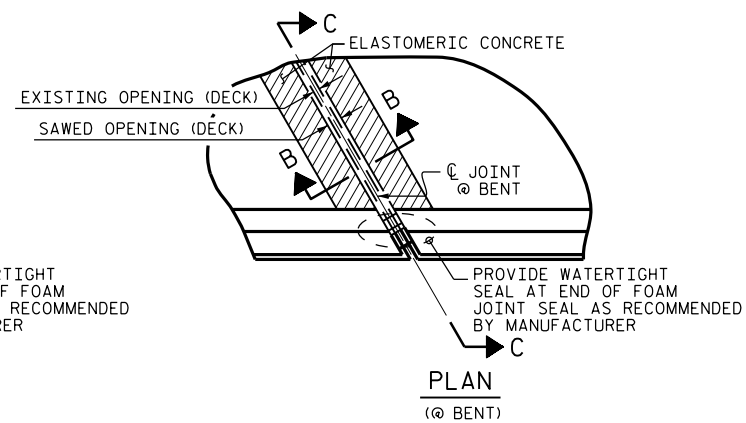
ELASTOMERIC CONCRETE		
END BENT 1	13.9	(CU. FT.)
BENT 1	13.9	(CU. FT.)
BENT 2	13.9	(CU. FT.)
BENT 3	13.9	(CU. FT.)
END BENT 2	13.9	(CU. FT.)
* TOTAL	69.5	(CU. FT.)

* BASED ON THE MINIMUM BLOCKOUT SHOWN.

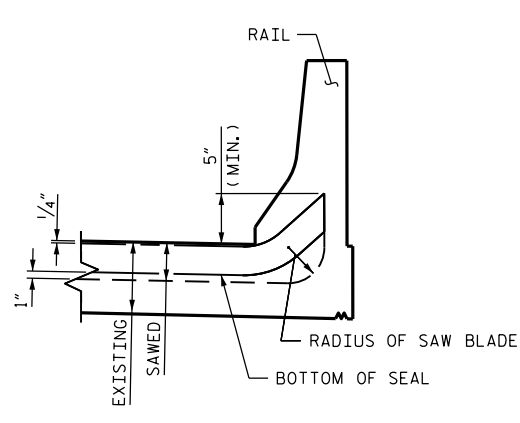
NOTES:
 FOR FOAM JOINT SEALS SEE SPECIAL PROVISIONS.
 THE INSTALLED FOAM JOINT SEAL SHALL BE WATER TIGHT.
 NOMINAL UNCOMPRESSED SEAL WIDTH OF FOAM JOINT SEAL SHALL BE 2 1/2" AT THE END BENTS AND 2" AT THE BENTS.
 THE CONTRACTOR WILL NOT BE PERMITTED TO FORM THE JOINT IN LIEU OF SAWING THE JOINT.
 FOR ELASTOMERIC CONCRETE, SEE SPECIAL PROVISIONS.



PLAN (@ END BENT)



PLAN (@ BENT)



SECTION C-C

PROJECT NO. I-5809
McDOWELL COUNTY
 BRIDGE NO. 151

DocuSigned by:
 John A. Yannaccone
 PROFESSIONAL ENGINEER
 SEAL 32492
 JOHN A. YANNACCONI

9/27/2016

REVISIONS						SHEET NO.
NO.	BY:	DATE:	NO.	BY:	DATE:	S-43
1			3			TOTAL SHEETS
2			4			68

DOCUMENT NOT CONSIDERED FINAL UNLESS ALL SIGNATURES COMPLETED

DRAWN BY: J.P. ADAMS DATE: 05/16
 CHECKED BY: T.L. AVERETTE DATE: 05/16

JOINT SEAL DETAILS