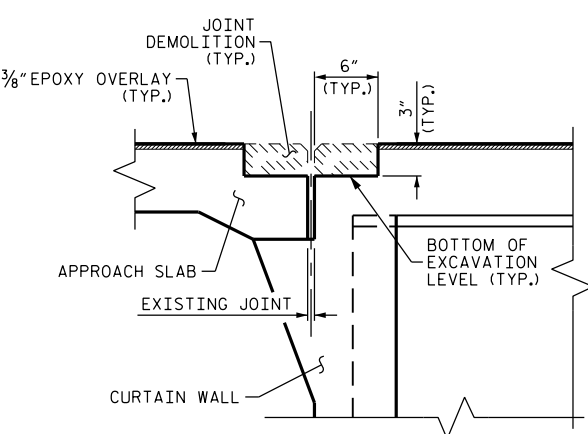
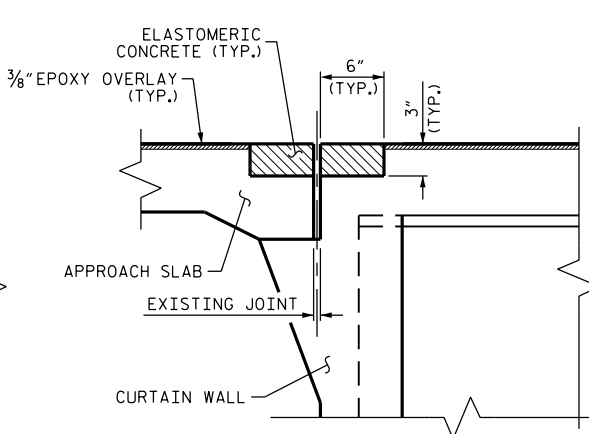


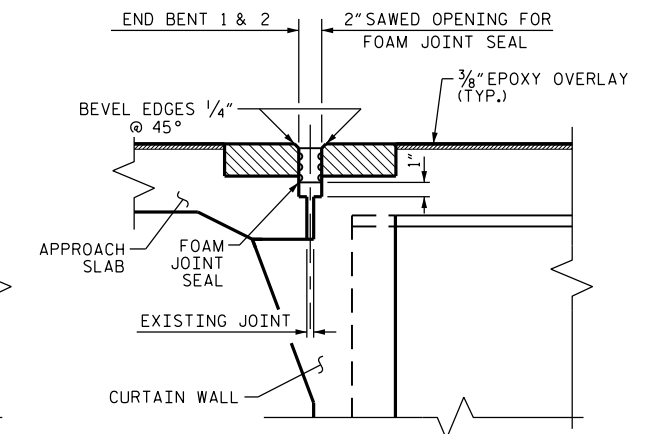
EXISTING JOINT



MINIMUM EXISTING JOINT DEMOLITION

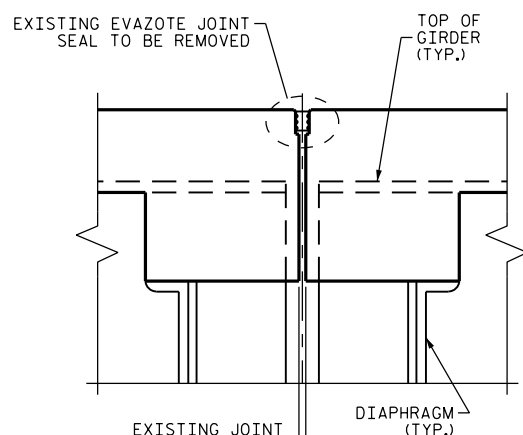


PROPOSED PRE-SAWED JOINT

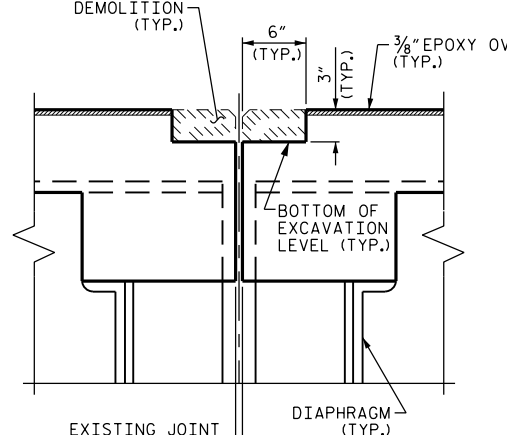


PROPOSED FOAM JOINT SEAL

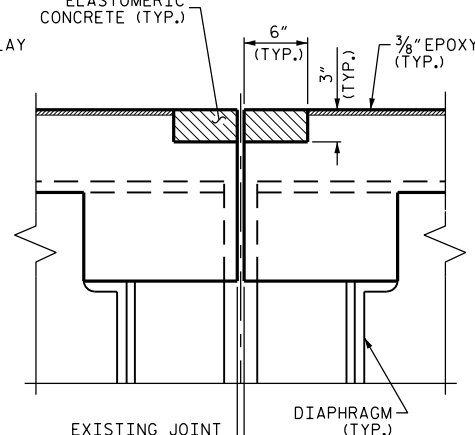
SECTION A-A



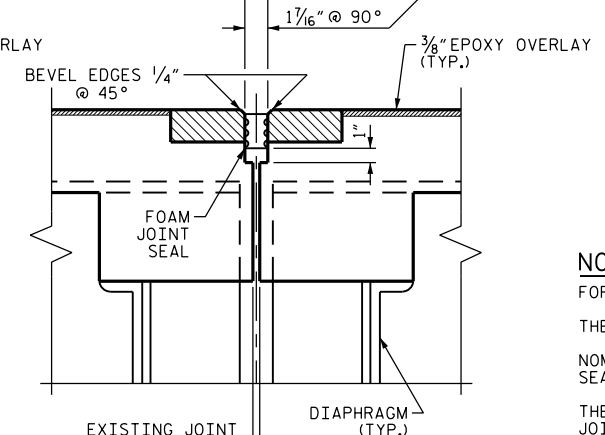
EXISTING JOINT



MINIMUM EXISTING JOINT DEMOLITION



PROPOSED PRE-SAWED JOINT



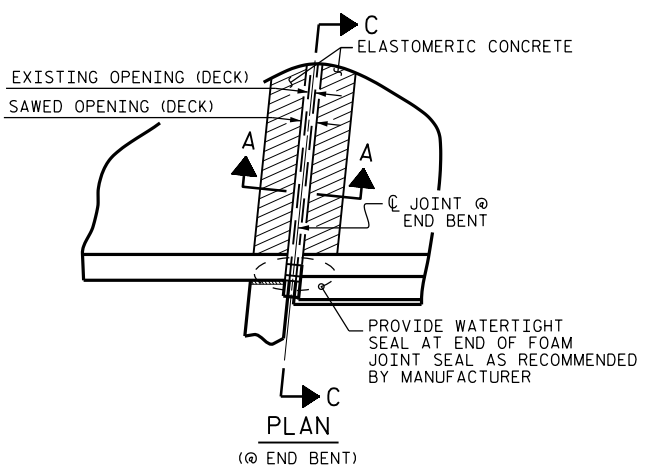
PROPOSED FOAM JOINT SEAL

SECTION B-B

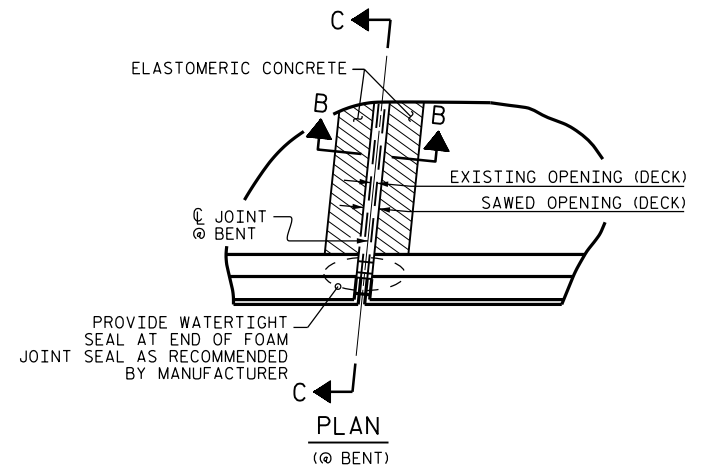
ELASTOMERIC CONCRETE		
END BENT 1	12.1	(CU. FT.)
BENT 1	12.1	(CU. FT.)
BENT 2	12.1	(CU. FT.)
END BENT 2	12.1	(CU. FT.)
* TOTAL	48.4	(CU. FT.)

* BASED ON THE MINIMUM BLOCKOUT SHOWN.

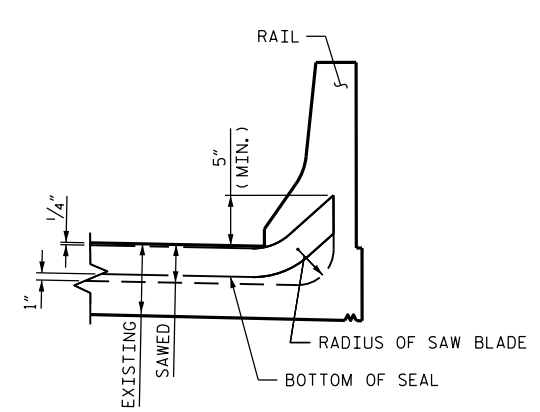
NOTES:
 FOR FOAM JOINT SEALS, SEE SPECIAL PROVISIONS.
 THE INSTALLED FOAM JOINT SEAL SHALL BE WATER TIGHT.
 NOMINAL UNCOMPRESSED SEAL WIDTH OF FOAM JOINT SEAL SHALL BE 2 1/2" AT THE END BENTS AND 2" AT THE BENTS.
 THE CONTRACTOR WILL NOT BE PERMITTED TO FORM THE JOINTS IN LIEU OF SAWING THE JOINT.
 FOR ELASTOMERIC CONCRETE, SEE SPECIAL PROVISIONS.



PLAN (@ END BENT)



PLAN (@ BENT)



SECTION C-C

PROJECT NO. I-5809
McDOWELL COUNTY
 BRIDGE NO. 143

DocuSigned by:
John A. Yanniccone
 NORTH CAROLINA
 PROFESSIONAL
 SEAL
 32492
 ENGINEER
 JOHN A. YANNICCONO

9/27/2016

STATE OF NORTH CAROLINA
 DEPARTMENT OF TRANSPORTATION
 RALEIGH

JOINT DETAILS

DRAWN BY : W.F. PARKER DATE : 05/16
 CHECKED BY : J.P. ADAMS DATE : 6/20/16

DOCUMENT NOT CONSIDERED
 FINAL UNLESS ALL
 SIGNATURES COMPLETED

REVISIONS						SHEET NO.
NO.	BY:	DATE:	NO.	BY:	DATE:	S-14
1			3			TOTAL SHEETS
2			4			68