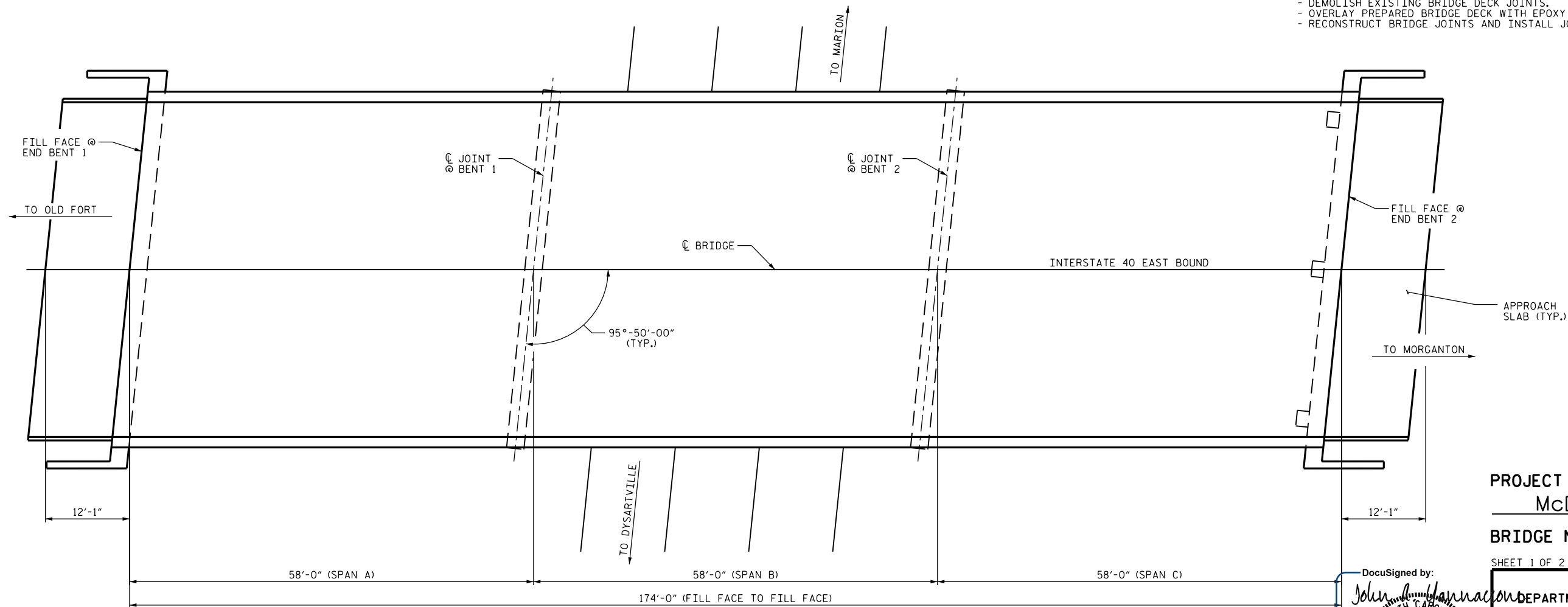


**NOTES**  
 PROFILE INFORMATION IS TAKEN FROM THE ORIGINAL PLANS AND THE ROUTINE INSPECTION REPORT DATED 04/14/2014.  
 BRIDGE ORIENTATION CONFORMS TO EXISTING BRIDGE PLANS.

**SCOPE OF WORK**

- CLEAN AND PAINT STEEL I-BEAMS AND BEARINGS.
- EPOXY INJECTION OF CONCRETE CRACKS.
- CLEAN AND REPAIR REBAR IN CONCRETE REPAIR AREAS.
- PERFORM CONCRETE REPAIRS IN PREPARED AREAS.
- REMOVE DEBRIS FROM TOP OF BENT CAPS AND APPLY EPOXY COATING.
- PARTIALLY REMOVE BRIDGE DECK CONCRETE USING SHOTBLASTING METHODS.
- DEMOLISH EXISTING BRIDGE DECK JOINTS.
- OVERLAY PREPARED BRIDGE DECK WITH EPOXY OVERLAY SYSTEM.
- RECONSTRUCT BRIDGE JOINTS AND INSTALL JOINT SEALS.

**SECTION ALONG C ROADWAY**



PROJECT NO. I-5809  
McDOWELL COUNTY  
 BRIDGE NO. 138

SHEET 1 OF 2

DocuSigned by:  
 John A. Yannaccone  
 NORTH CAROLINA  
 PROFESSIONAL  
 ENGINEER  
 SEAL  
 32492  
 JOHN A. YANNAKONE

9/27/2016

STATE OF NORTH CAROLINA  
 DEPARTMENT OF TRANSPORTATION  
 RALEIGH

GENERAL DRAWING  
 FOR BRIDGE ON I-40 EBL  
 OVER NC 226

I HEREBY CERTIFY THAT THIS STRUCTURE WAS REHABILITATED ACCORDING TO THESE PLANS OR AS NOTED HEREIN.  
 \_\_\_\_\_  
 RESIDENT ENGINEER DATE

DRAWN BY : W.F. PARKER DATE : 05/16  
 CHECKED BY : J.P. ADAMS DATE : 6/2016

DOCUMENT NOT CONSIDERED FINAL UNLESS ALL SIGNATURES COMPLETED

| REVISIONS |     |       |     |     |       | SHEET NO.    |
|-----------|-----|-------|-----|-----|-------|--------------|
| NO.       | BY: | DATE: | NO. | BY: | DATE: | TOTAL SHEETS |
| 1         |     |       | 3   |     |       | S-2          |
| 2         |     |       | 4   |     |       | 68           |