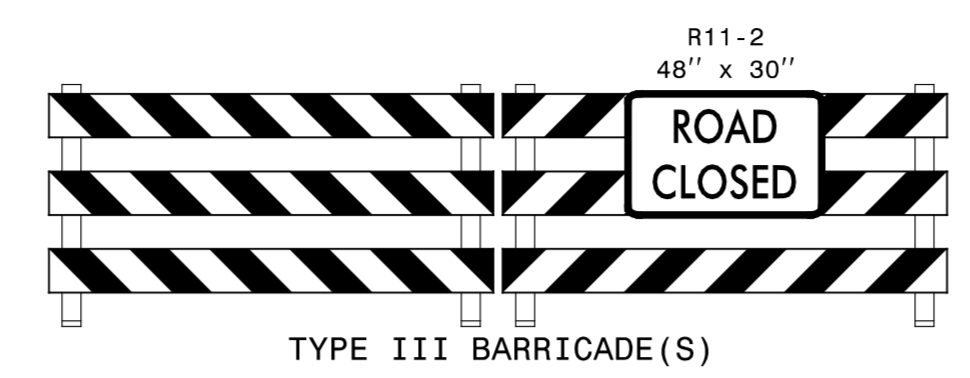


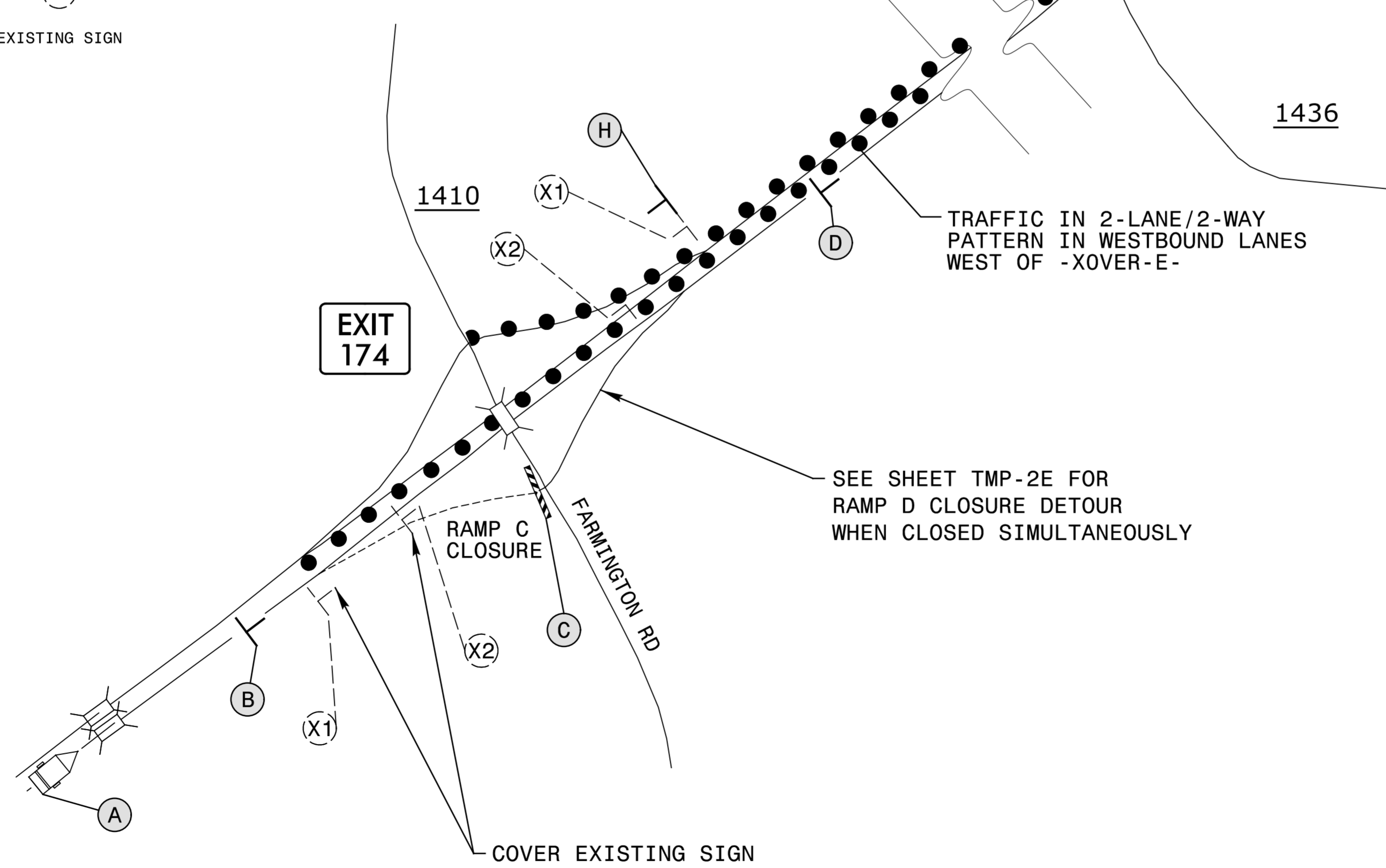
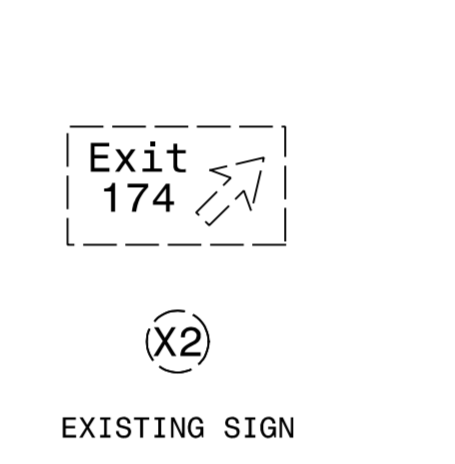
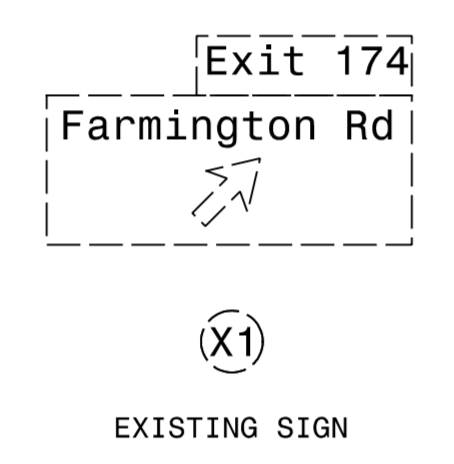
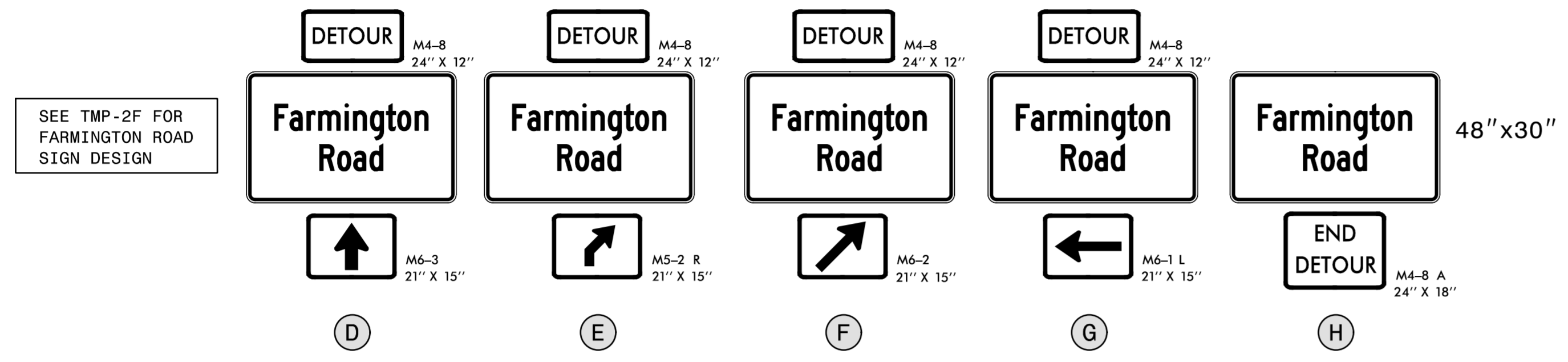
| | |
|-------------------------------------|----------------------------------|
| MESSAGE NO. 1 EXIT 174 CLOSED | MESSAGE NO. 2 USE EXIT 180 |
| CHANGEABLE MESSAGE SIGN | |

**EXIT
CLOSED**



(A) PLACE CMS 1/2 MILE IN ADVANCE OF EXIT 174

(B) PLACE SIGN 1000' IN ADVANCE OF EXIT 174



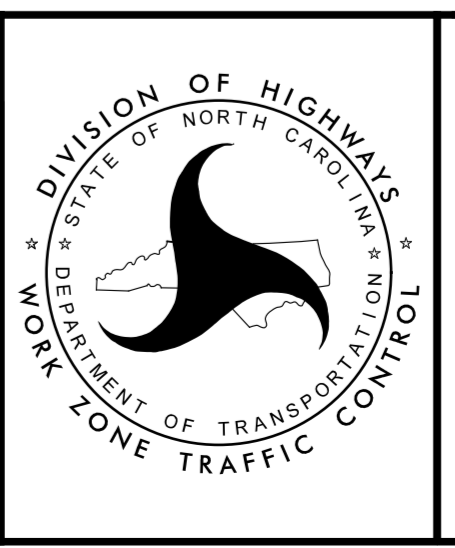
NOTE: TRAFFIC PATTERN ON I-40 MAY BE 2-LANE/2-WAY IN WESTBOUND LANES. POSITION SIGNING ACCORDINGLY

APPROVED: *Michael T. Rzepka*
DocuSigned by: Michael T. Rzepka 01BC3480C28046D

DATE: 12/19/2016

SEAL

DOCUMENT NOT CONSIDERED FINAL UNLESS ALL SIGNATURES COMPLETED



**DETOUR FOR
I-40 RAMP C
CLOSURE
(PHASE III)**

12/19/2016
 R:\c_o_cad_bim\6.2_Work\In_Progress\TrafficControl\TCP\15765_tmp_detour_rampC_2.dgn
 ICA Engineering