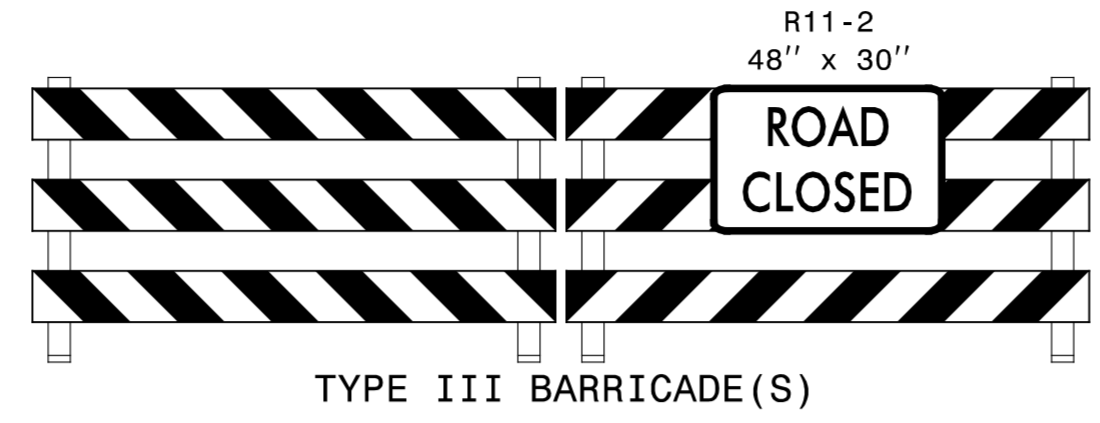


MESSAGE NO. 1	MESSAGE NO. 2
EXIT 174 CLOSED	USE EXIT 170

CHANGEABLE MESSAGE SIGN

EXIT CLOSED

E5-2 A
48" X 36"

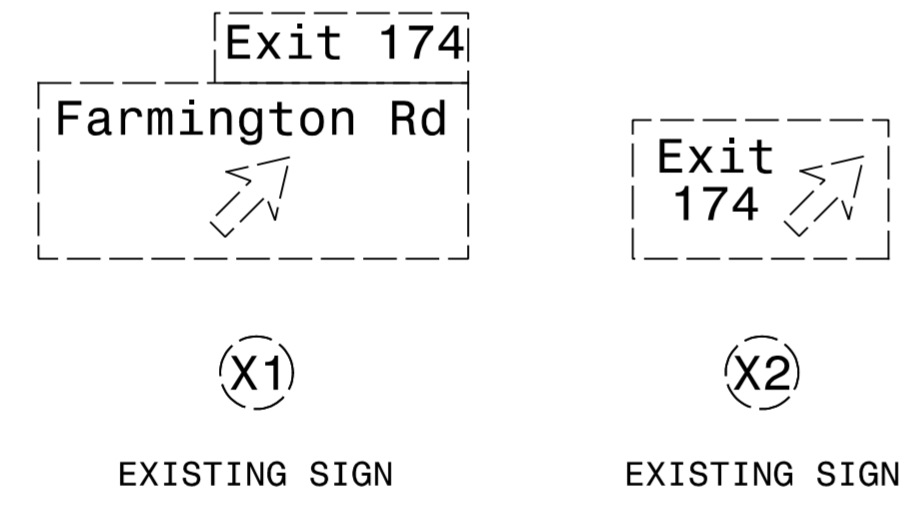
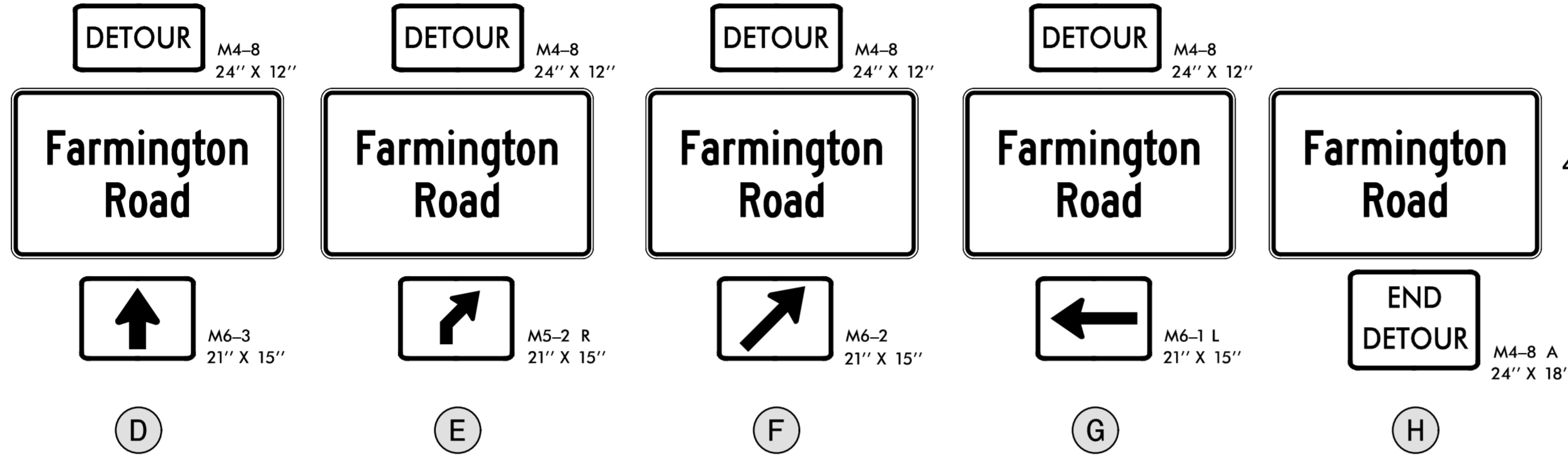


(A)
PLACE CMS 1/2 MILE IN ADVANCE OF EXIT 174

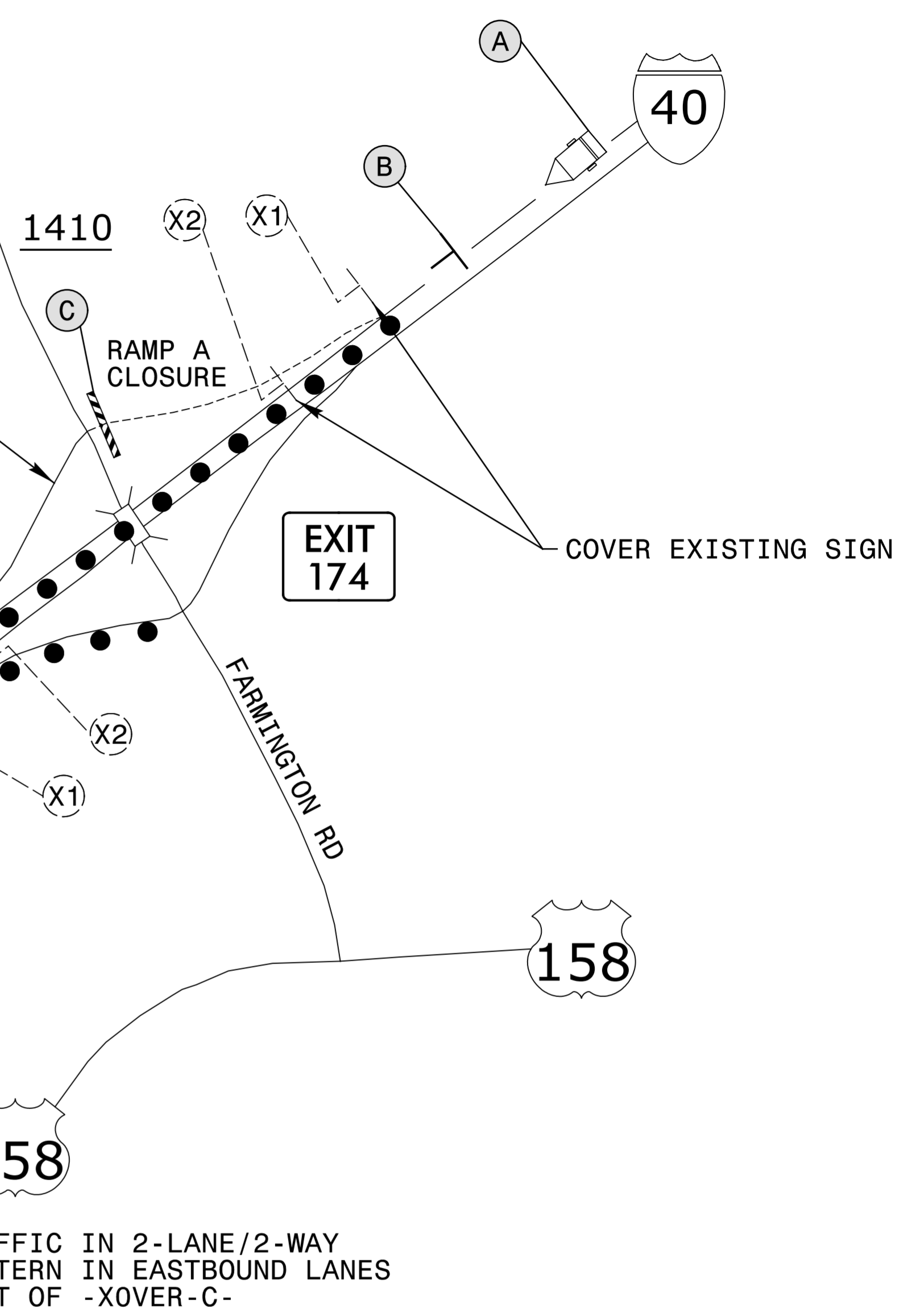
(B)
PLACE SIGN 1000' IN ADVANCE OF EXIT 174

(C)

SEE TMP-2F FOR FARMINGTON ROAD SIGN DESIGN

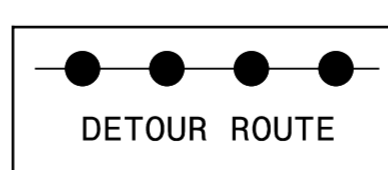


SEE SHEET TMP-2C FOR RAMP B CLOSURE DETOUR WHEN CLOSED SIMULTANEOUSLY



CROSSOVER -XOVER-C-

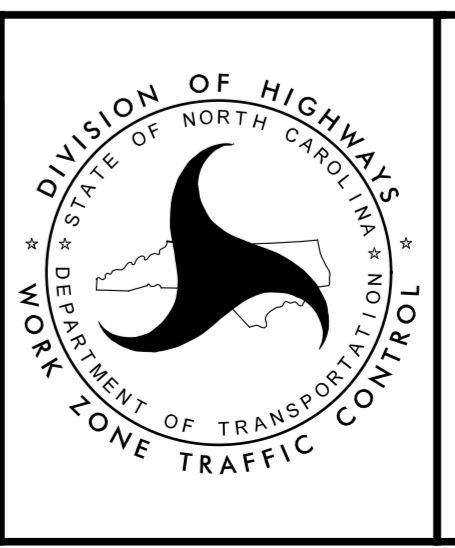
NOTE: TRAFFIC PATTERN ON I-40 MAY BE 2-LANE/2-WAY IN EASTBOUND LANES. POSITION SIGNING ACCORDINGLY



APPROVED: *Michael T. Rzepka*
DATE: 12/19/2016

SEAL

DOCUMENT NOT CONSIDERED FINAL UNLESS ALL SIGNATURES COMPLETED



SEGMENT 1
DETOUR FOR I-40
RAMP A CLOSURE
(PHASE II)

12/19/2016 R:\c0_CAD_BIM\6.2_Work\In_Progress\TrafficControl\TCP\I5765_tmp_detour_rampA_2b.dgn ICA Engineering