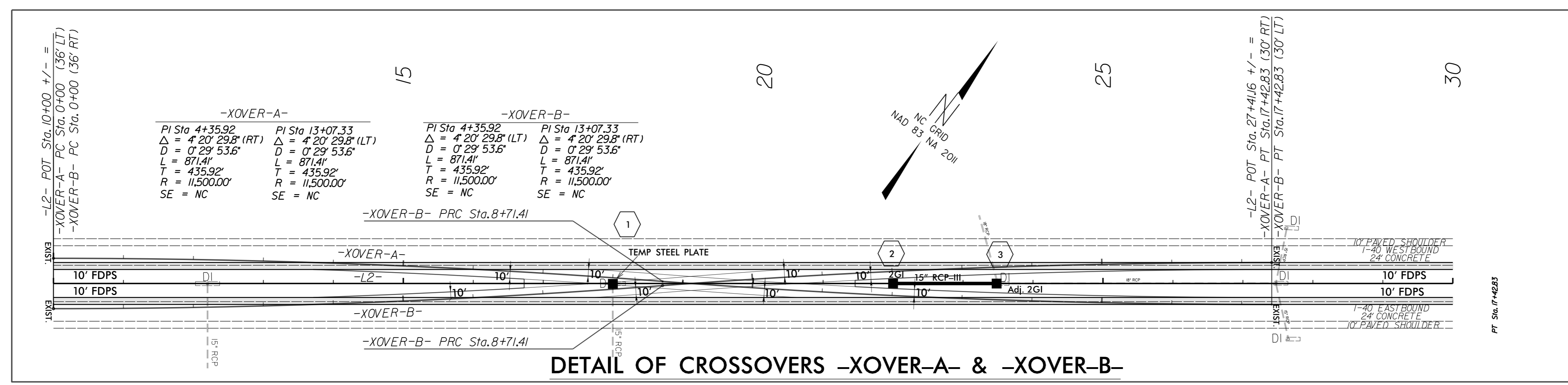


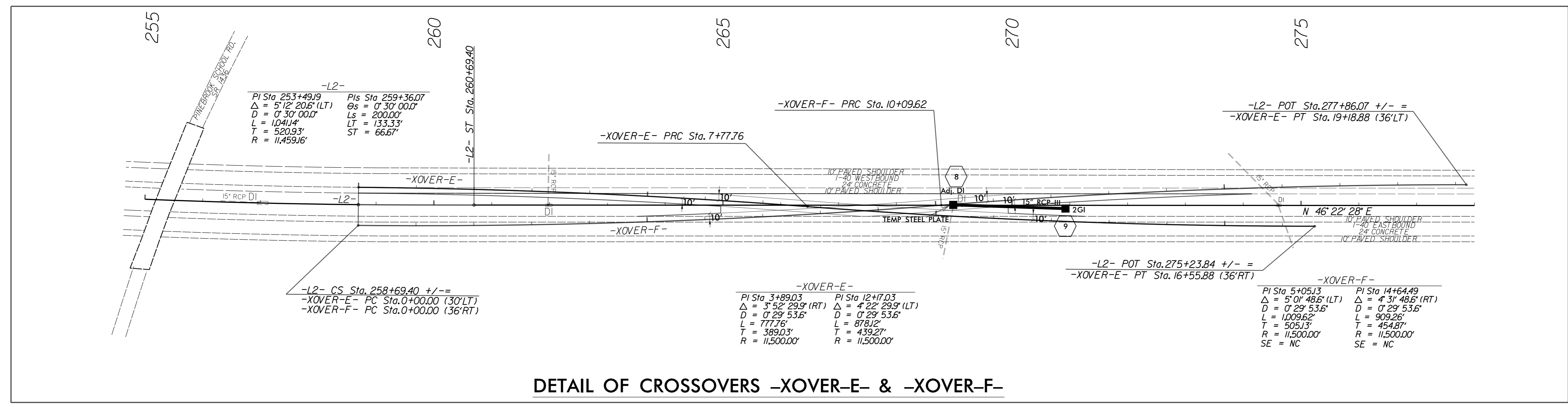
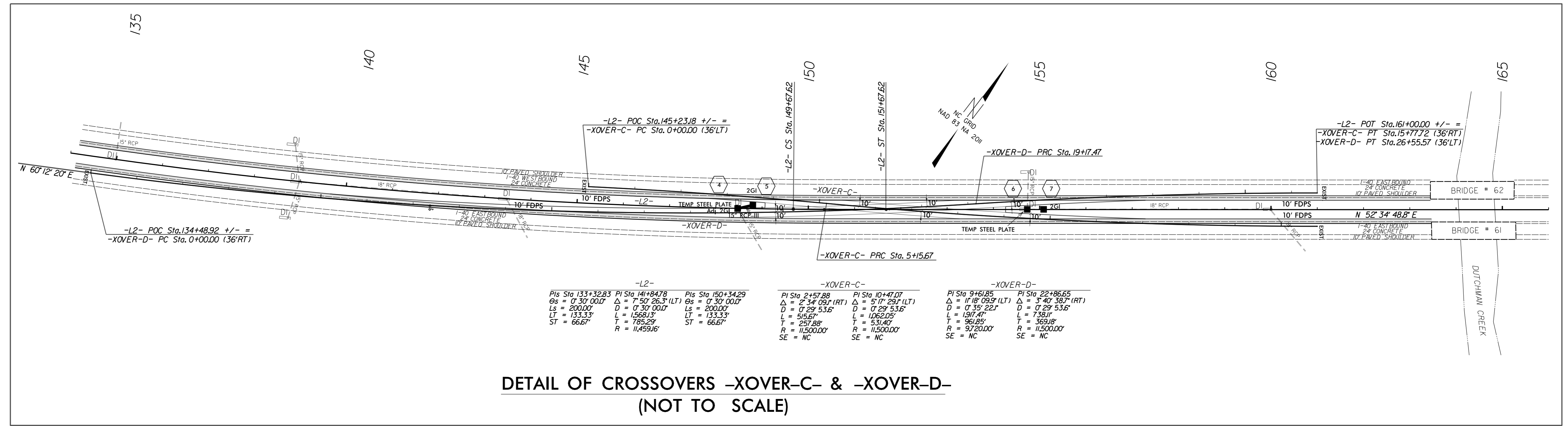
5/14/99

PROJECT REFERENCE NO. 1-5765	SHEET NO. 2B-2
RW SHEET NO.	
ROADWAY DESIGN ENGINEER WILLIAM A. BLANTON 1/5/2017	HYDRAULICS ENGINEER WILLIAM A. BLANTON 1/5/2017
<p>DOCUMENT NOT CONSIDERED FINAL UNLESS ALL SIGNATURES COMPLETED</p>	



NOTES:

- SPECIFIC LOCATIONS, GRADES, GUIDERAIL, EROSION CONTROL AND STORM DRAINAGE ARE TO BE DETERMINED DURING CONSTRUCTION. ITEMS HAVE BEEN INCLUDED IN THE ESTIMATE TO COVER THIS WORK.
- DURING CONSTRUCTION, THE EXISTING CABLE GUIDERAIL IN THE CROSSOVER AREAS WILL BE REMOVED AND THE ENDS ATTACHED TO NEW ANCHOR UNITS. FOLLOWING CONSTRUCTION NEW CABLE GUIDERAIL WILL BE REINSTALLED IN THESE AREAS TO MATCH EXISTING CONDITIONS.



DDC\2003\JAN\2017\4102_Pavie\15765_ddc_tfp_xover.dgn
 5/14/99
 1/5/2017