

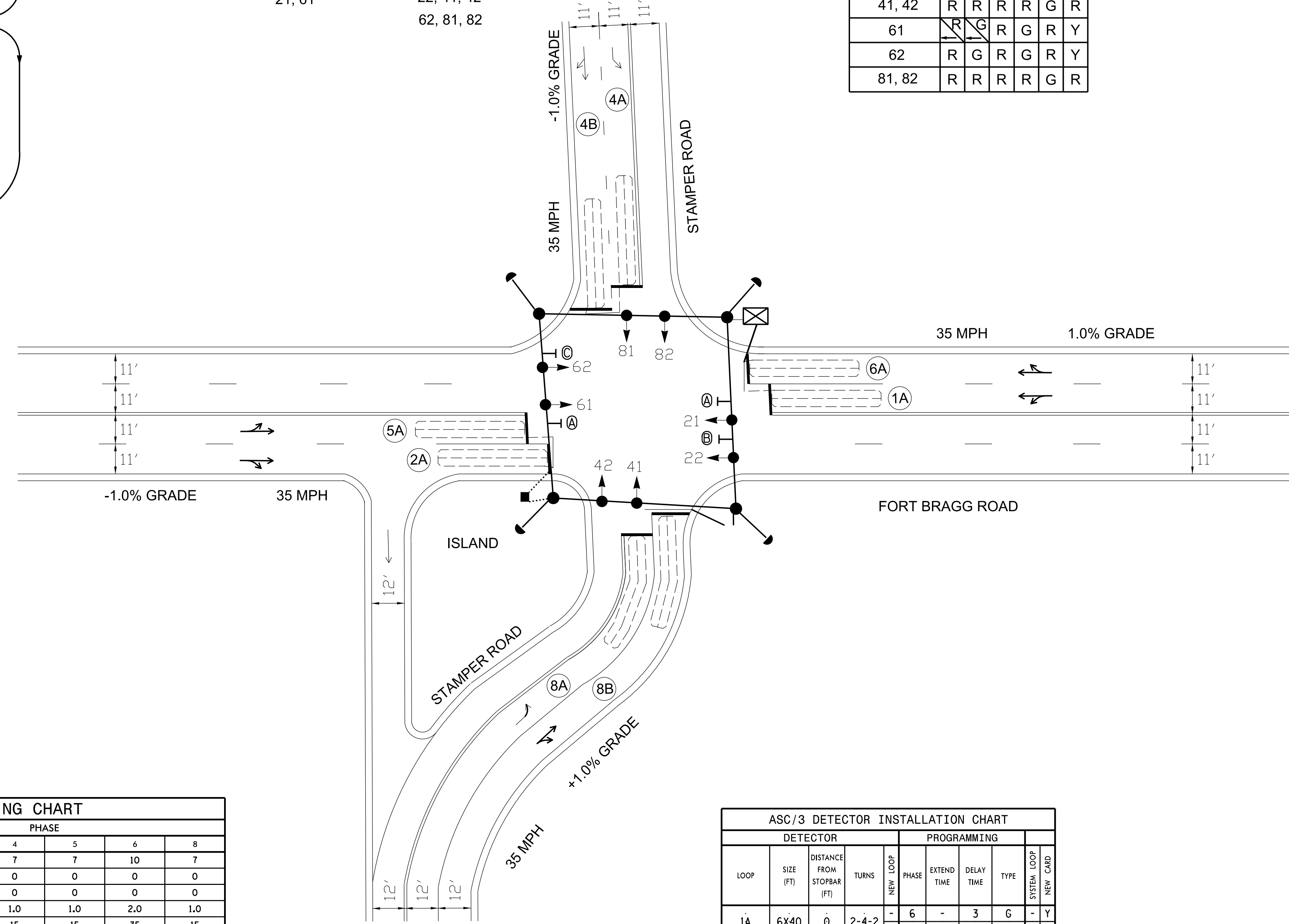
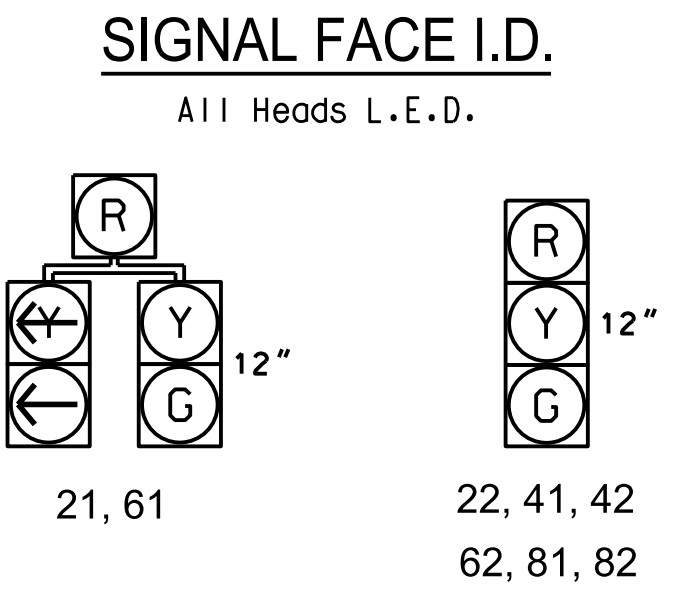
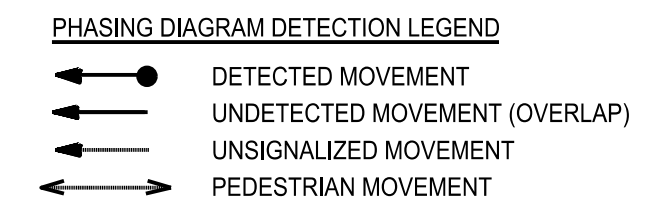
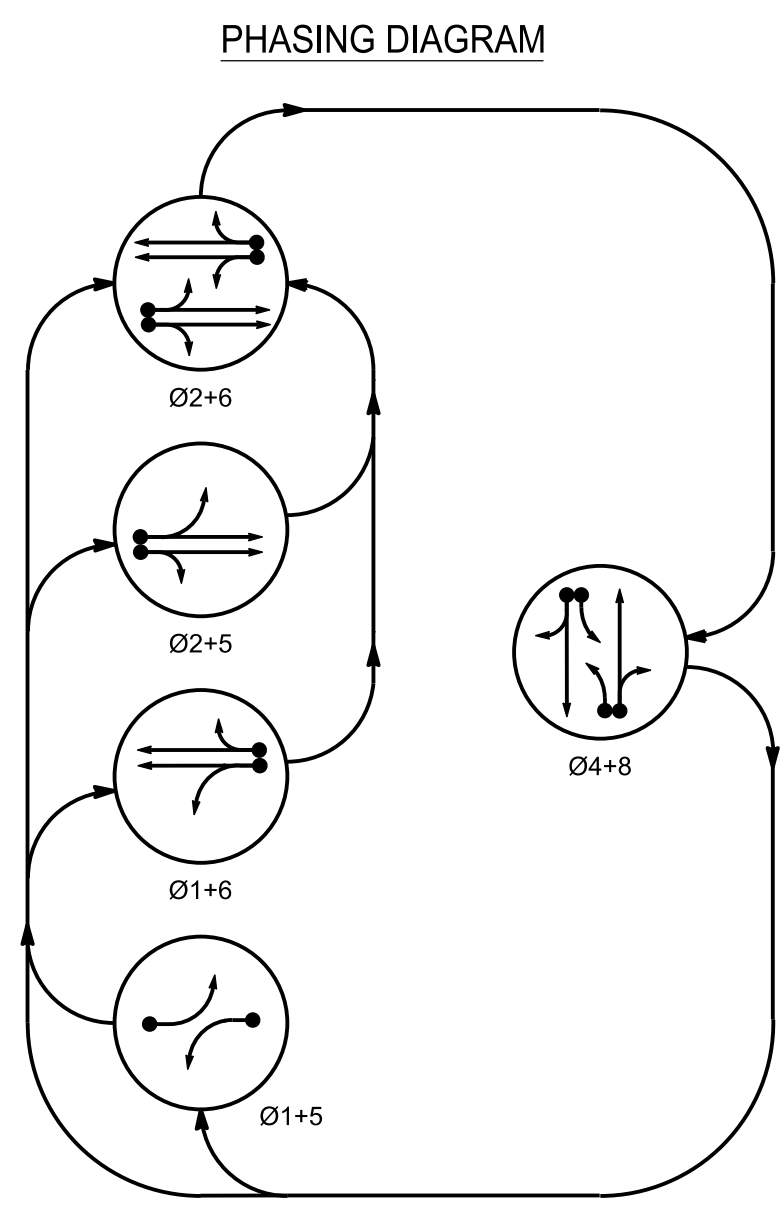
5 PHASE  
FULLY ACTUATED  
FAYETTEVILLE SIGNAL SYSTEM

NOTES

1. Refer to "Roadway Standard Drawings NCDOT" dated January 2012 and "Standard Specifications for Roads and Structures" dated January 2012.
2. Maximum times shown in timing chart are for free-run operation only. Coordinated signal system timing values shall supersede these values.
3. Pavement markings are existing.
4. Program the controller to clear from phases 2+6 to phases 1+5 or phases 1+6 or phases 2+5 by progressing through phases 4+8.
5. Omit phase 1 during phase 2 on and omit phase 5 during phase 6 on.
6. Program phases 4 and 8 for dual entry.
7. Locate new cabinet on existing foundation.

TABLE OF OPERATION

SIGNAL FACE	PHASE					
	Ø1+5	Ø1+6	Ø2+5	Ø2+6	Ø4+8	FLASH
21	R	R	G	G	R	Y
22	R	R	G	G	R	Y
41, 42	R	R	R	R	G	R
61	R	G	R	G	R	Y
62	R	G	R	G	R	Y
81, 82	R	R	R	R	G	R



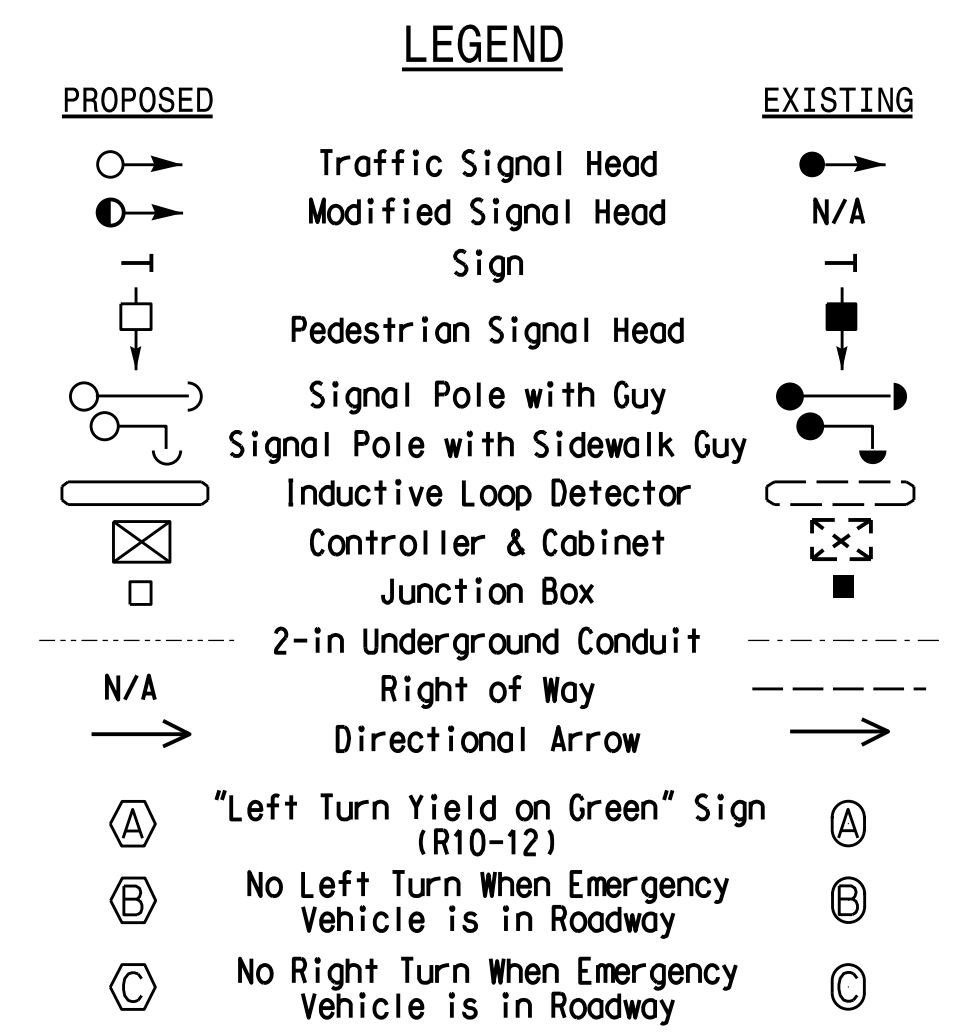
ASC/3 TIMING CHART

FEATURE	PHASE					
	1	2	4	5	6	8
Min Green *	7	10	7	7	10	7
Walk *	0	0	0	0	0	0
Ped Clear	0	0	0	0	0	0
Veh. Extension *	1.0	2.0	1.0	1.0	2.0	1.0
Max I *	15	35	15	15	35	15
Yellow	3.1	3.9	3.9	3.2	3.8	3.8
Red Clear	1.8	1.2	1.2	1.5	1.4	1.2
Actuations B4 Add *	-	-	-	-	-	-
Seconds / Actuation *	-	-	-	-	-	-
Max Initial *	-	-	-	-	-	-
Time Before Reduction *	-	-	-	-	-	-
Time To Reduce *	-	-	-	-	-	-
Minimum Gap	-	-	-	-	-	-
Locking Detector	-	X	-	-	X	-
Recall Position	-	MIN. RECALL	-	-	MIN. RECALL	-
Dual Entry	-	-	X	-	-	X
Simultaneous Gap	X	X	X	X	X	X

\* These values may be field adjusted. Do not adjust Min Green and Extension times for phases 2 and 6 lower than what is shown. Min Green for all other phases should not be lower than 4 seconds.

ASC/3 DETECTOR INSTALLATION CHART

LOOP	SIZE (FT)	DISTANCE FROM STOPBAR (FT)	TURNS	PROGRAMMING						
				NEW LOOP	PHASE	EXTEND TIME	DELAY TIME	TYPE	SYSTEM LOOP	
1A	6X40	0	2-4-2	-	6	-	3	G	-	Y
2A	6X40	0	2-4-2	-	2	-	-	S	-	Y
4A	6X40	0	2-4-2	-	4	-	-	S	-	Y
4B	6X40	0	2-4-2	-	4	-	10	S	-	Y
5A	6X40	0	2-4-2	-	2	-	3	G	-	Y
6A	6X40	0	2-4-2	-	5	-	40	S	-	Y
8A	6X40	0	2-4-2	-	8	-	-	S	-	Y
8B	6X40	0	2-4-2	-	8	-	10	S	-	Y



Signal Upgrade

 DIV 06 CUMBERLAND COUNTY FAYETTEVILLE PLAN DATE: NOVEMBER 2016 REVIEWED BY: RWT PREPARED BY: BLR REVIEWED BY:	SEAL  Russell W. Thompson 11/21/2016 DATE

Prepared in the Offices of  
**Hatch Mott MacDonald**  
 PO Box 700  
 Fuquay-Varina, NC 27526  
 www.hatchmott.com  
 HATCH MOTT MACDONALD & E, LLC  
 LICENSE NO. P46629

default \\NCF-DATA\Proj\360655\_U-5742\_Faj\Sig\Project\Sigs\Design\100%FINAL SEALED PLANS\Revised 1172016\FB-egg.at-Stemper.dgn 11/17/2016 2:37:35 PM