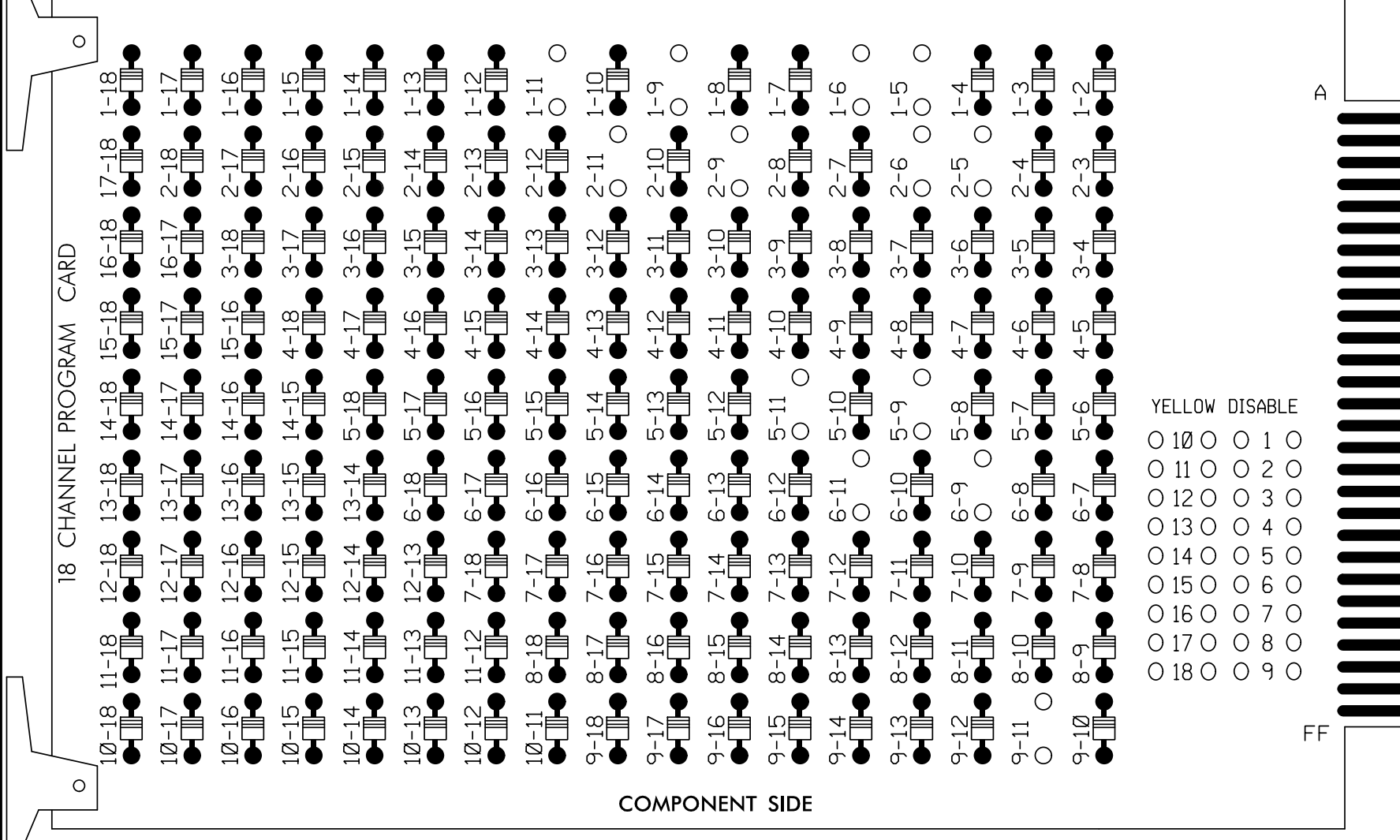


### EDI MODEL 2018EClip-NC CONFLICT MONITOR PROGRAMMING DETAIL

(remove jumpers and set switches as shown)

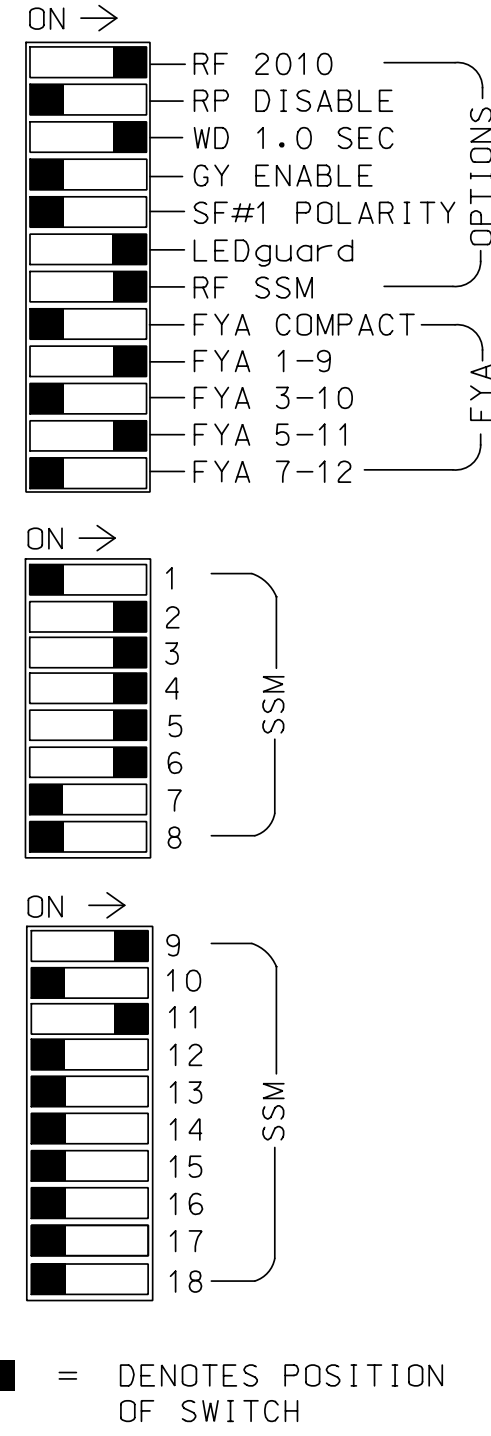
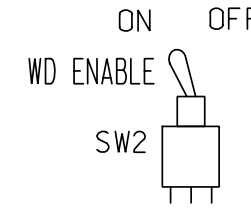
REMOVE DIODE JUMPERS 1-5,1-6,1-9,1-11,2-5,2-6,2-9,2-11,5-9,5-11,6-9,6-11,9-11



REMOVE JUMPERS AS SHOWN

**NOTES:**

- Card is provided with all diode jumpers in place. Removal of any jumper allows its channels to run concurrently.
- Ensure jumpers SEL2-SEL5 and SEL9 are present on the monitor board.
- Ensure that Red Enable is active at all times during normal operation.
- Integrate monitor with Ethernet network in cabinet.



**NOTES**

- To prevent "flash-conflict" problems, insert red flash program blocks for all unused vehicle load switches in the output file. The installer shall verify that signal heads flash in accordance with the Signal Plans.
- Enable Simultaneous Gap-Out for all phases.
- Program phases 2 and 6 for volume density operation.
- Program controller to start up in phase 2 Green and 6 Green.
- The cabinet and controller are part of the Fayetteville Signal System.

**EQUIPMENT INFORMATION**

CONTROLLER.....2070E  
 CABINET.....332 W/AUX  
 SOFTWARE.....ECONOLITE ASC/3-2070  
 CABINET MOUNT.....BASE  
 OUTPUT FILE POSITIONS...18 WITH AUX. OUTPUT FILE  
 LOAD SWITCHES USED.....S1,S2,S4,S5,S7,S8  
 AUX S1,AUX S4  
 PHASES USED.....1,2,3,4,5,6  
 OVERLAP "A".....\*  
 OVERLAP "B".....NOT USED  
 OVERLAP "C".....\*  
 OVERLAP "D".....NOT USED  
 \* See overlap programming detail on sheet 2

**SIGNAL HEAD HOOK-UP CHART**

LOAD SWITCH NO.	S1	S2	S3	S4	S5	S6	S7	S8	S9	S10	S11	S12	AUX S1	AUX S2	AUX S3	AUX S4	AUX S5	AUX S6
CMU CHANNEL NO.	1	2	13	3	4	14	5	6	15	7	8	16	9	10	17	11	12	18
PHASE	1	2	2 PED	3	4	4 PED	5	6	6 PED	7	8	8 PED	OLA	OLB	SPARE	OLC	OLD	SPARE
SIGNAL HEAD NO.	11*	21,22	NU	22	31	32	41	42	62	NU	42	51*	61,62	NU	NU	NU	NU	NU
RED		128		116	116	101	101					*	134					
YELLOW	*	129		117	117	102	102						135					
GREEN		130		118	118	103	103						136					
RED ARROW														A121			A114	
YELLOW ARROW				117				102	132					A122			A115	
FLASHING YELLOW ARROW														A123			A116	
GREEN ARROW	127			118	118	103	103	133	133									

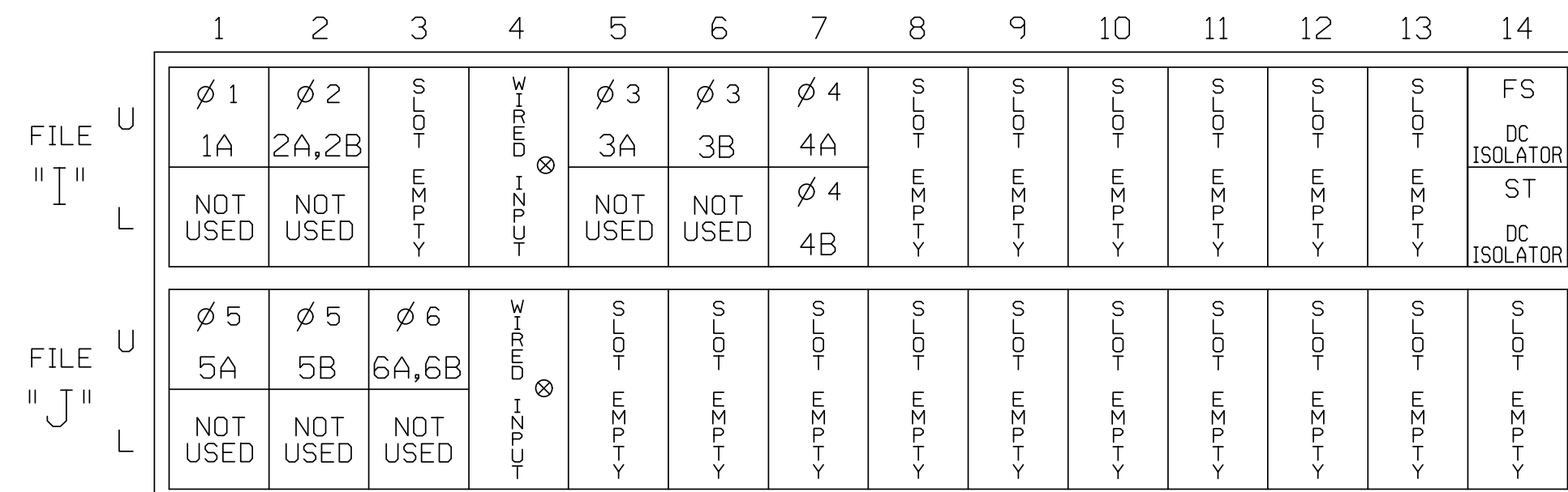
NU = Not Used

\* Denotes install load resistor. See load resistor installation detail this sheet.

\* See pictorial of head wiring in detail this sheet.

**INPUT FILE POSITION LAYOUT**

(front view)



EX: 1A, 2A, ETC. = LOOP NO.'S

FS = FLASH SENSE  
 ST = STOP TIME

⊗ Wired Input - Do not populate slot with detector card

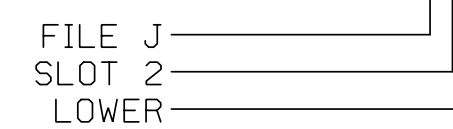
**INPUT FILE CONNECTION & PROGRAMMING CHART**

LOOP NO.	LOOP TERMINAL	INPUT FILE POS.	PIN NO.	DETECTOR NO.	NEMA PHASE	CALL	EXTEND TIME	DELAY TIME	DETECTOR TYPE
1A <sup>1</sup>	TB2-1,2	I1U	56	1	1	YES		15	S
	-	J4U	48	26	6	YES		3	G
2A,2B	TB2-5,6	I2U	39	2	2	YES			N
	3A	TB4-5,6	I5U	58	3	3	YES	3	S
3B	TB4-9,10	I6U	41	4	3	YES	10	S	
4A	TB6-1,2	I7U	65	34	4	YES	3	S	
4B	TB6-3,4	I7L	78	44	4	YES		S	
5A <sup>2</sup>	TB3-1,2	J1U	55	5	5	YES		15	S
	-	I4U	47	22	2	YES		3	G
5B	TB3-5,6	J2U	40	6	5	YES	15	S	
6A,6B	TB3-9,10	J3U	64	36	6	YES		N	

<sup>1</sup>Add jumper from I1-W to J4-W, on rear of input file.

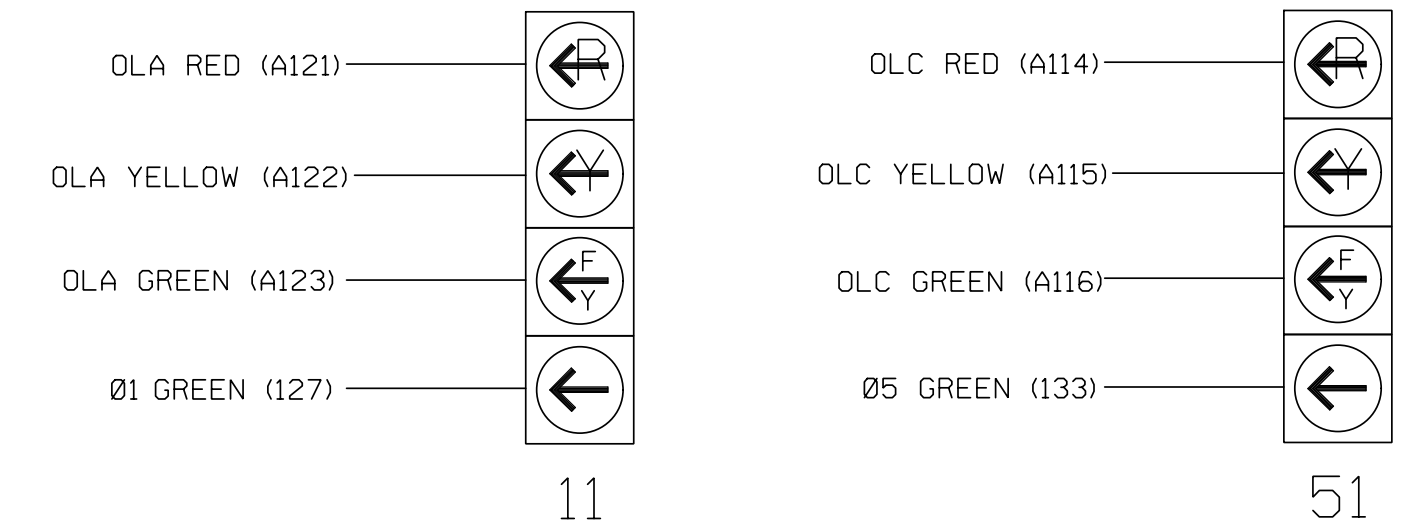
<sup>2</sup>Add jumper from J1-W to I4-W, on rear of input file.

**INPUT FILE POSITION LEGEND: J2L**



**FYA SIGNAL WIRING DETAIL**

(wire signal heads as shown)

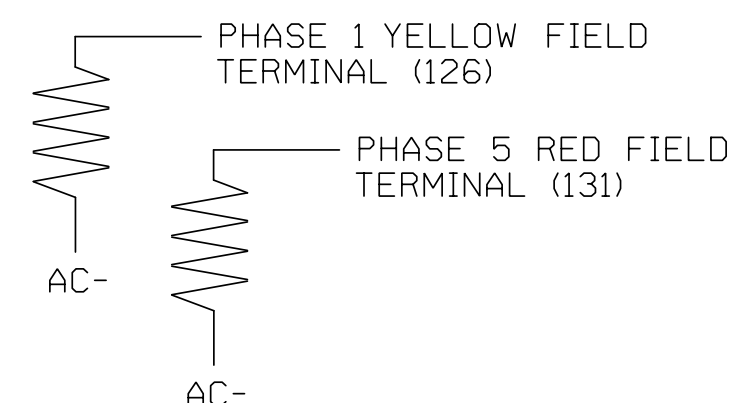


**LOAD RESISTOR INSTALLATION DETAIL**

(install resistors as shown)

**ACCEPTABLE VALUES**

VALUE (ohms)	WATTAGE
1.5K - 1.9K	25W (min)
2.0K - 3.0K	10W (min)



THIS ELECTRICAL DETAIL IS FOR THE SIGNAL DESIGN: 06-0856  
 DESIGNED: March 2016  
 SEALED: 7/20/2016  
 REVISED:

Electrical Detail Sheet 1 of 2

DOCUMENT NOT CONSIDERED FINAL UNLESS ALL SIGNATURES COMPLETED

ELECTRICAL AND PROGRAMMING DETAILS FOR:

SR 1404 (Morganton Road)  
 at  
 SR 3259 (E. Loch Haven Drive)  
 / Westlake Road

Division 6 Cumberland County Fayetteville

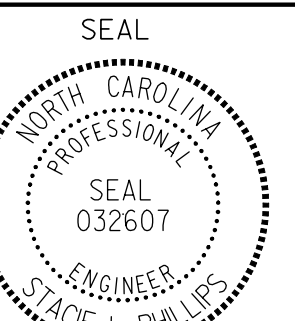
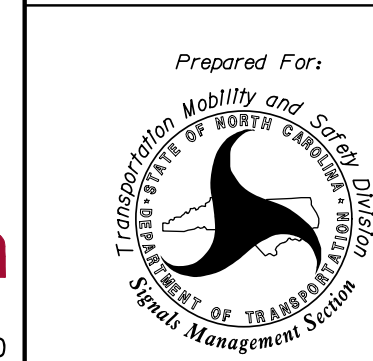
PLAN DATE: August 2016 REVIEWED BY: KP Baumann

PREPARED BY: SP Pennington REVIEWED BY: SL Phillips

REVISIONS INIT. DATE

10/5/2016

SIG. INVENTORY NO. 06-0856



PLANS PREPARED IN THE OFFICE OF:  
**Kimley Horn**  
 NC License #F-0102  
 421 Fayetteville Street, Suite 600  
 Raleigh, NC 27601  
 (919) 677-2000

750 N. Greenfield Pkwy, Garner, NC 27529