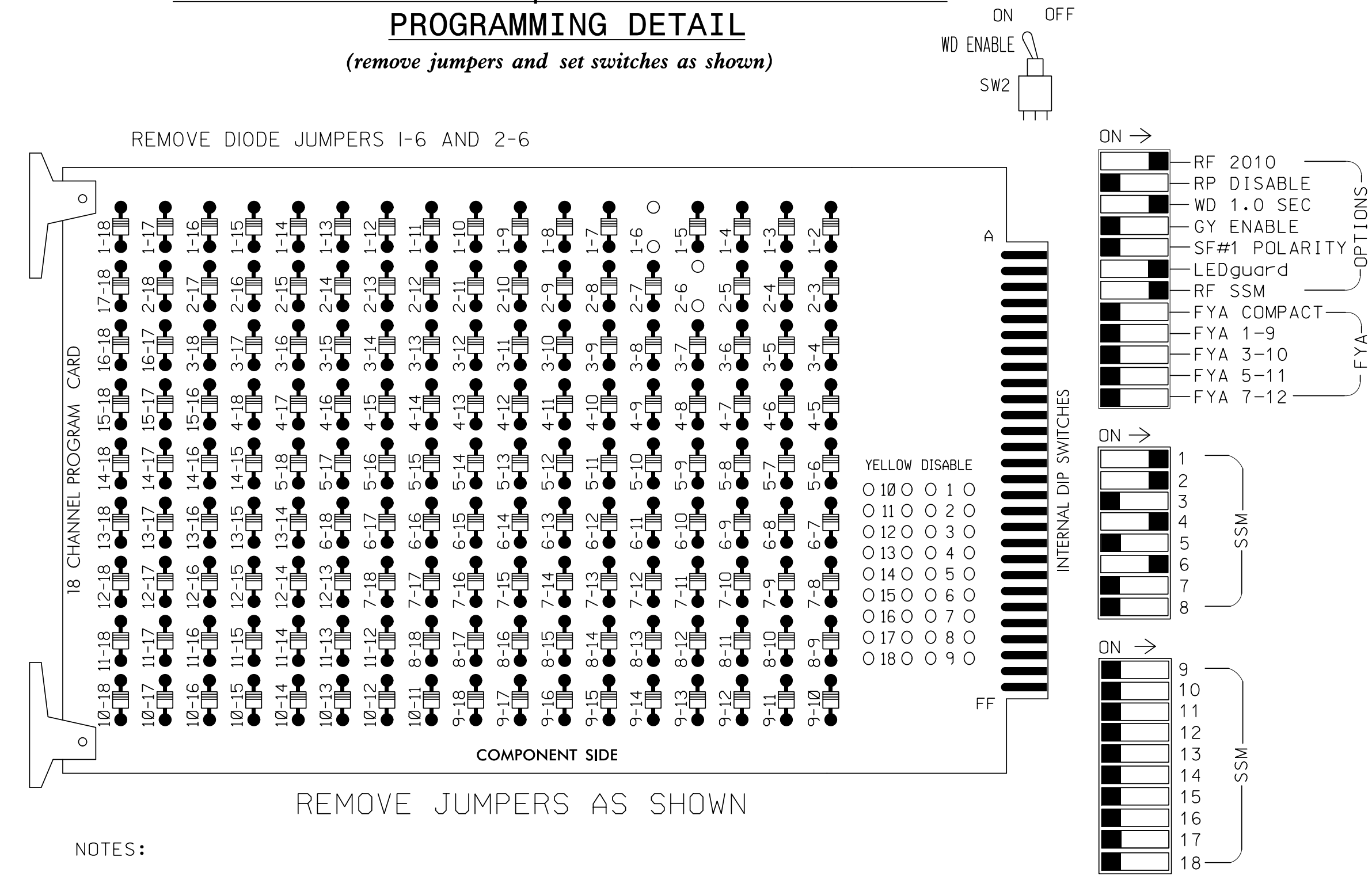


**EDI MODEL 2018EClip-NC CONFLICT MONITOR
PROGRAMMING DETAIL**

(remove jumpers and set switches as shown)



NOTES:

1. Card is provided with all diode jumpers in place. Removal of any jumper allows its channels to run concurrently.
2. Ensure jumpers SEL2-SEL5 and SEL9 are present on the monitor board.
3. Ensure that Red Enable is active at all times during normal operation.
4. Integrate monitor with Ethernet network in cabinet.

NOTES

1. To prevent "flash-conflict" problems, insert red flash program blocks for all unused vehicle load switches in the output file. The installer shall verify that signal heads flash in accordance with the Signal Plans.
2. Enable Simultaneous Gap-Out for all phases.
3. Program controller to start up in phase 2 Green and 6 Green.
4. The cabinet and controller are part of the Fayetteville Signal System.

SIGNAL HEAD HOOK-UP CHART

LOAD SWITCH NO.	S1	S2	S3	S4	S5	S6	S7	S8	S9	S10	S11	S12
CMU CHANNEL NO.	1	2	13	3	4	14	5	6	15	7	8	16
PHASE	1	2	2 PED	3	4	4 PED	5	6	6 PED	7	8	8 PED
SIGNAL HEAD NO.	11,12	21,22 23	NU	NU	41,42 43	NU	NU	61,62	NU	NU	NU	NU
RED		128			101			134				
YELLOW		129			102			135				
GREEN		130			103			136				
RED ARROW	125											
YELLOW ARROW	126											
GREEN ARROW	127											
Hand icon												
Person icon												

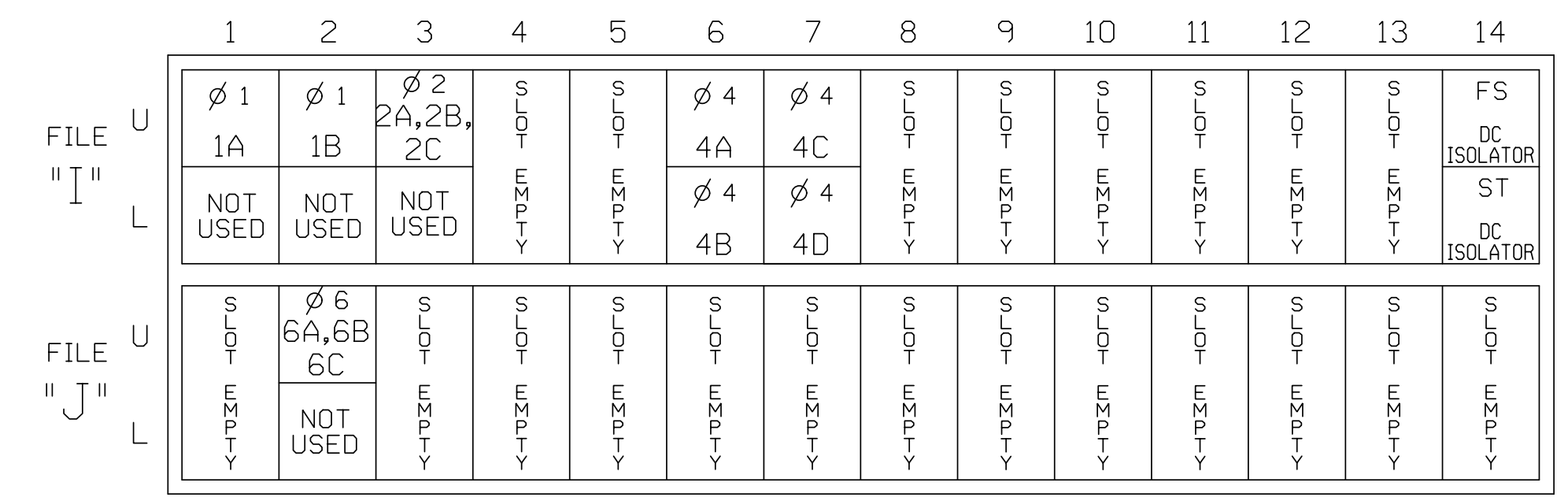
NU = Not Used

EQUIPMENT INFORMATION

CONTROLLER.....2070E
 CABINET.....332
 SOFTWARE.....ECONOLITE ASC/3-2070
 CABINET MOUNT.....BASE
 OUTPUT FILE POSITIONS...12
 LOAD SWITCHES USED.....S1,S2,S5,S8
 PHASES USED.....1,2,4,6
 OVERLAPS.....NONE

INPUT FILE POSITION LAYOUT

(front view)



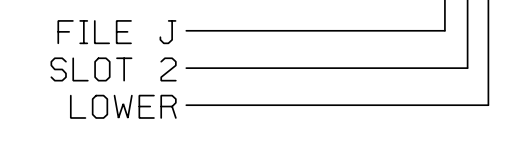
EX.: 1A, 2A, ETC. = LOOP NO.'S

FS = FLASH SENSE
 ST = STOP TIME

INPUT FILE CONNECTION & PROGRAMMING CHART

LOOP NO.	LOOP TERMINAL	INPUT FILE POS.	PIN NO.	DETECTOR NO.	NEMA PHASE	CALL	EXTEND TIME	DELAY TIME	DETECTOR TYPE
1A	TB2-1,2	I1U	56	1	1	YES			S
1B	TB2-5,6	I2U	39	2	1	YES			S
2A,2B,2C	TB2-9,10	I3U	63	32	2	YES			S
4A	TB4-9,10	I6U	41	4	4	YES			S
4B	TB4-11,12	I6L	45	14	4	YES			S
4C	TB6-1,2	I7U	65	34	4	YES		15	S
4D	TB6-3,4	I7L	78	44	4	YES		15	S
6A,6B,6C	TB3-5,6	J2U	40	6	6	YES			S

INPUT FILE POSITION LEGEND: J2L



THIS ELECTRICAL DETAIL IS FOR
 THE SIGNAL DESIGN: 06-0322
 DESIGNED: February 2016
 SEALED: 5/6/2016
 REVISED:

8/11/2016 K:\MAIL_TPT\K\SIGNALS\4011036345_Foyeh\evl\le Electrical\060322-2016e.dgn Susan Pennington

Electrical Detail

ELECTRICAL AND PROGRAMMING DETAILS FOR:

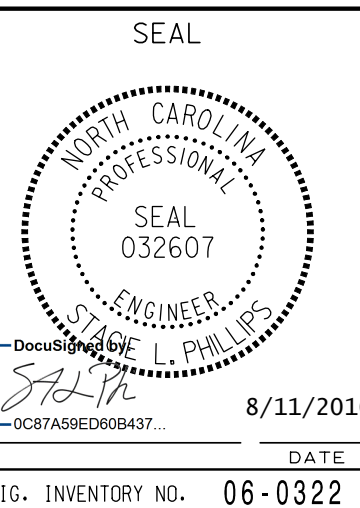


PLANS PREPARED IN THE OFFICE OF:
Kimley-Horn
 NC License #F-0102
 421 Fayetteville Street, Suite 600
 Raleigh, NC 27601
 (919) 677-2000

**SR 1404 (Morganton Road)
 at
 All American Expressway
 SB Exit and Entrance Ramps**

Division 6	Cumberland County	Fayetteville
PLAN DATE: June 2016	REVIEWED BY: KP Baumann	
PREPARED BY: SP Pennington	REVIEWED BY: SL Phillips	
REVISIONS	INIT.	DATE

DOCUMENT NOT CONSIDERED FINAL UNLESS ALL SIGNATURES COMPLETED



SIG. INVENTORY NO. 06-0322