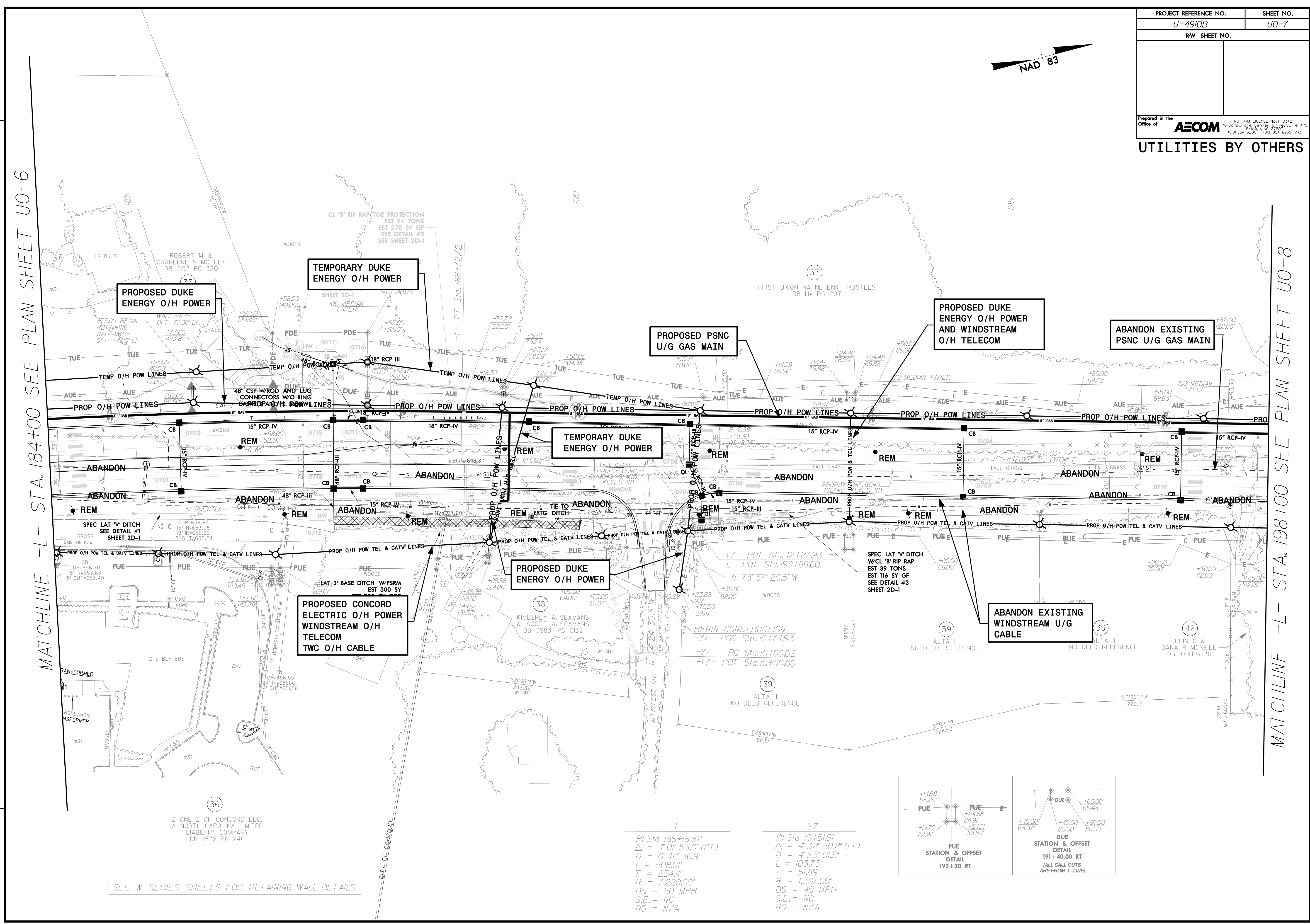


MATCHLINE -L- STA. 184+00 SEE PLAN SHEET U0-6

MATCHLINE -L- STA. 198+00 SEE PLAN SHEET U0-8

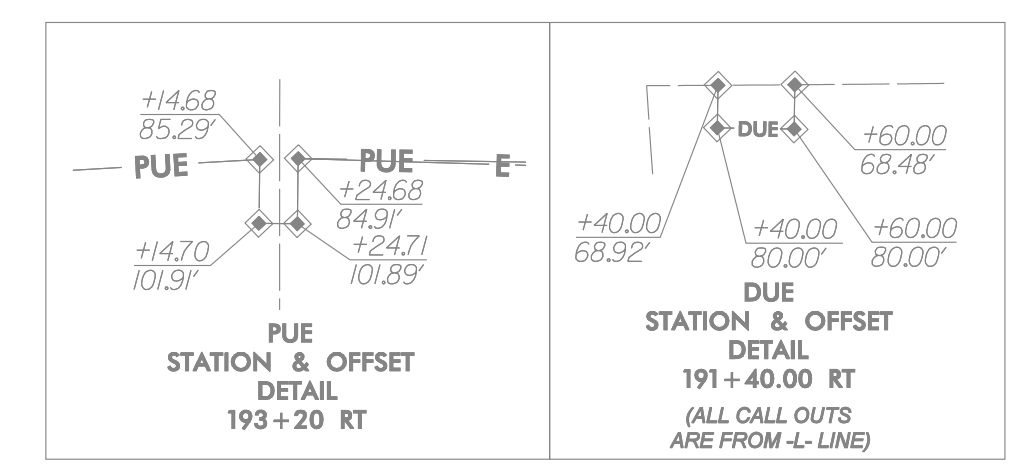


Revisions:

SEE W SERIES SHEETS FOR RETAINING WALL DETAILS

-L-
 PI Sta 186+18.82
 $\Delta = 4' 01' 53.0''$ (RT)
 $D = 0' 47' 36.9''$
 $L = 508.01'$
 $T = 254.11'$
 $R = 7,220.00'$
 $DS = 50$ MPH
 $S.E. = NC$
 $RO = N/A$

-Y7-
 PI Sta 10+51.91
 $\Delta = 4' 32' 50.2''$ (LT)
 $D = 4' 23' 01.5''$
 $L = 103.73'$
 $T = 51.89'$
 $R = 1,307.00'$
 $DS = 40$ MPH
 $S.E. = NC$
 $RO = N/A$



36
 2 ONE 2 OF CONCORD LLC,
 A NORTH CAROLINA LIMITED
 LIABILITY COMPANY
 DB 11572 PG 240

PROPOSED DUKE
 ENERGY O/H POWER

TEMPORARY DUKE
 ENERGY O/H POWER

PROPOSED PSNC
 U/G GAS MAIN

PROPOSED DUKE
 ENERGY O/H POWER
 AND WINDSTREAM
 O/H TELECOM

ABANDON EXISTING
 PSNC U/G GAS MAIN

TEMPORARY DUKE
 ENERGY O/H POWER

PROPOSED DUKE
 ENERGY O/H POWER

PROPOSED CONCORD
 ELECTRIC O/H POWER
 WINDSTREAM O/H
 TELECOM
 TWC O/H CABLE

ABANDON EXISTING
 WINDSTREAM U/G
 CABLE