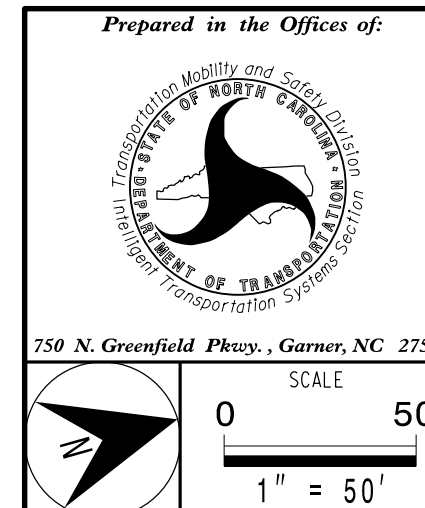


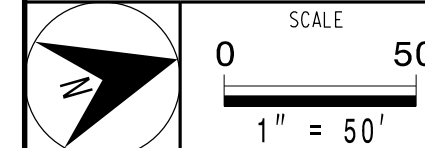
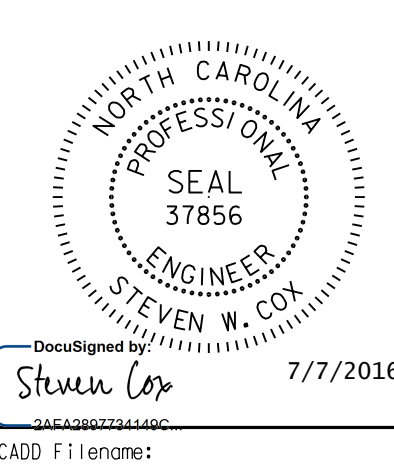
NOTES:

1. ALL NCDOT CABLE ATTACHMENT POINTS ARE 40" BELOW POWER, FRONT SIDE OF POLE, UNLESS OTHERWISE NOTED.

DOCUMENT NOT CONSIDERED FINAL UNLESS ALL SIGNATURES COMPLETED



<b>COMMUNICATIONS CABLE AND CONDUIT ROUTING PLANS</b>	
Division 10 Cabarrus County	Concord
PLAN DATE: June 2016	REVIEWED BY: C.L. Kalencik
PREPARED BY: S.W. Cox	REVIEWED BY:
REVISIONS	INIT. DATE



DocuSigned by:  
Steven Cox  
7/7/2016  
CADD Filename: