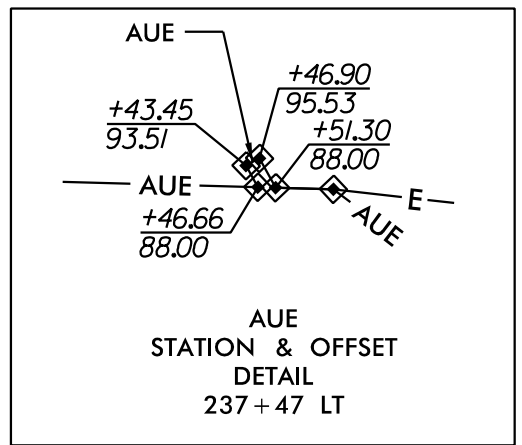
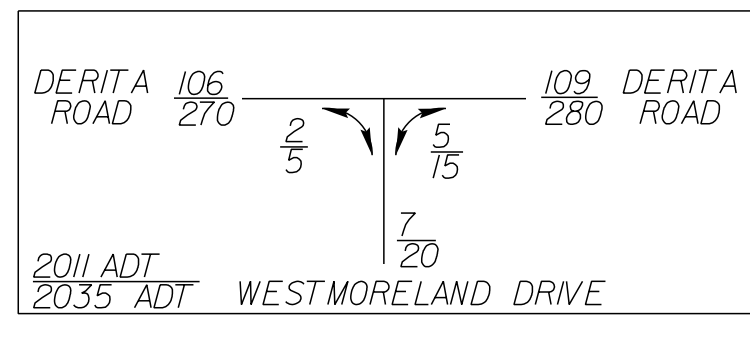
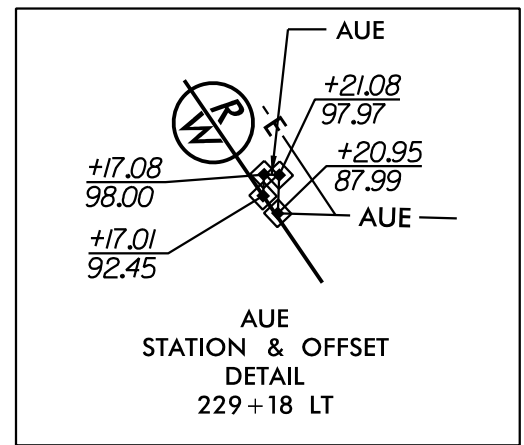


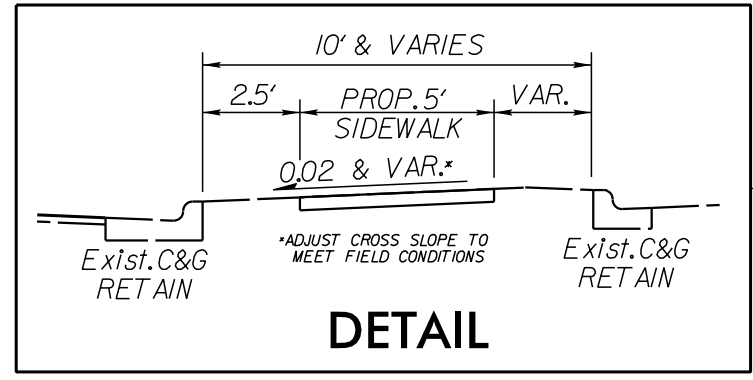
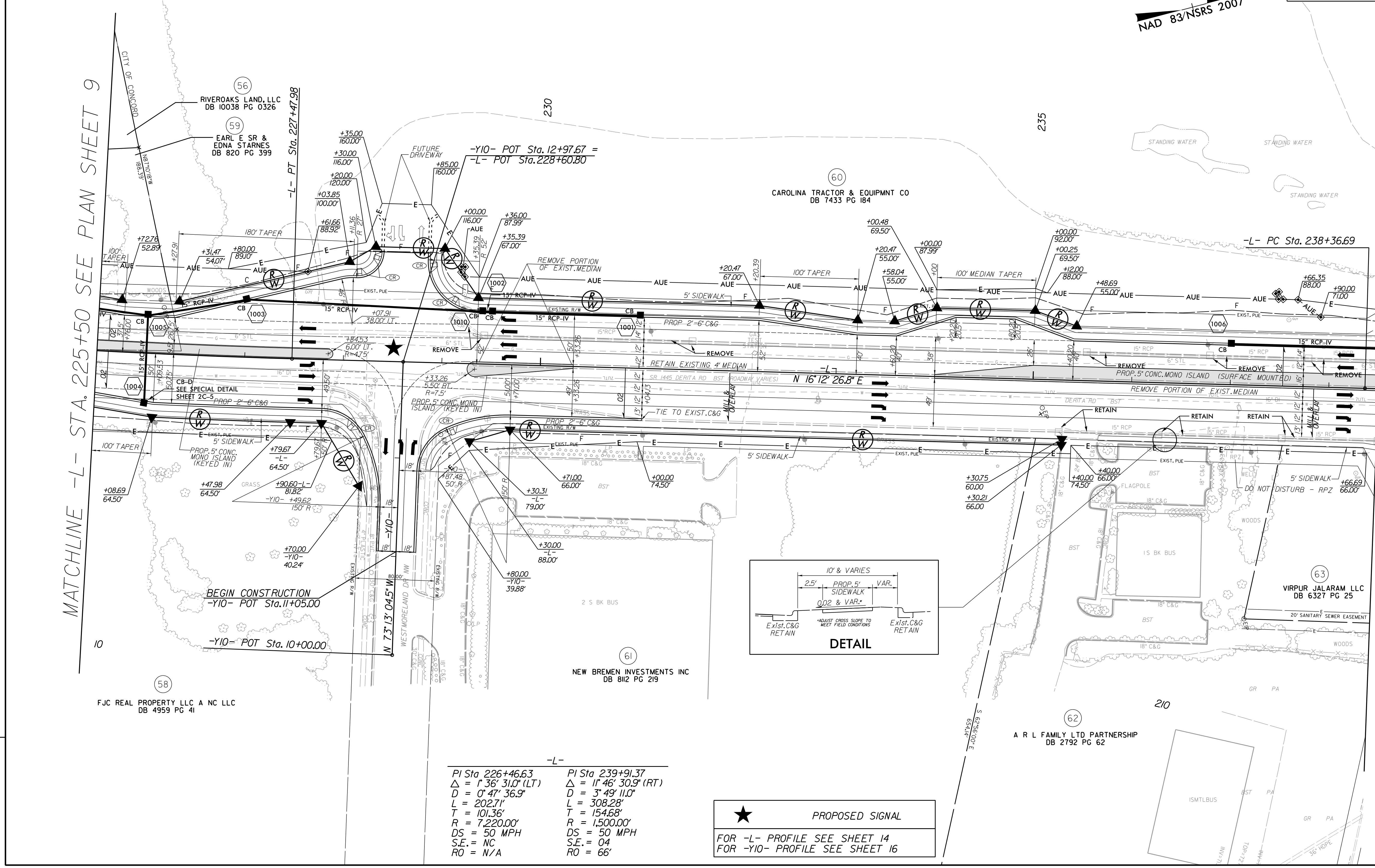
PROJECT REFERENCE NO. U-4910B	SHEET NO. 10
RW SHEET NO.	
ROADWAY DESIGN ENGINEER <i>[Signature]</i>	HYDRAULICS ENGINEER <i>[Signature]</i>
12/16/2016	12/16/2016
<p>Prepared in the Office of:</p> <p>AECOM</p> <p>NC FIRM LICENSE No. F-0342 701 Corporate Center Drive, Suite 475 Raleigh, NC 27607 (919) 854-6200 • (919) 854-6259(FAX)</p>	
<p>DOCUMENT NOT CONSIDERED FINAL UNLESS ALL SIGNATURES COMPLETED</p>	



NAD 83/NSRS 2007

MATCHLINE -L- STA. 225+50 SEE PLAN SHEET 9

MATCHLINE -L- STA. 238+50 SEE PLAN SHEET 11



PI Sta 226+46.63 $\Delta = 1' 36' 31.0''$ (LT) $D = 0' 47' 36.9''$ $L = 202.71'$ $T = 101.36'$ $R = 7,220.00'$ $DS = 50$ MPH $S.E. = NC$ $RO = N/A$	PI Sta 239+91.37 $\Delta = 1' 46' 30.9''$ (RT) $D = 3' 49' 11.0''$ $L = 308.28'$ $T = 154.68'$ $R = 1,500.00'$ $DS = 50$ MPH $S.E. = 04$ $RO = 66'$
---	---

★ PROPOSED SIGNAL
 FOR -L- PROFILE SEE SHEET 14
 FOR -Y10- PROFILE SEE SHEET 16

REVISIONS

Revisions:

Drawn: R:\Roadway\Proj\U4910B\U4910B_CAD\DWG\U4910B.dwg
 User: schmid
 Date: 12/16/2016
 Time: 9:59:50 AM