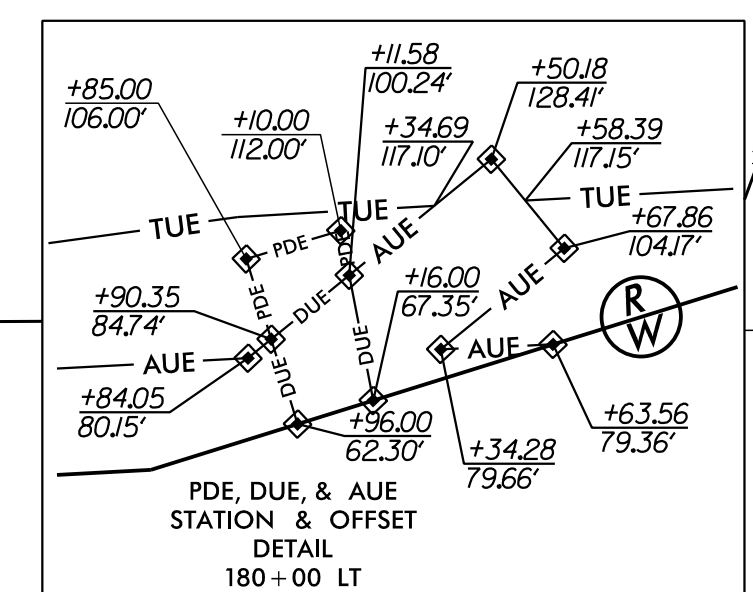
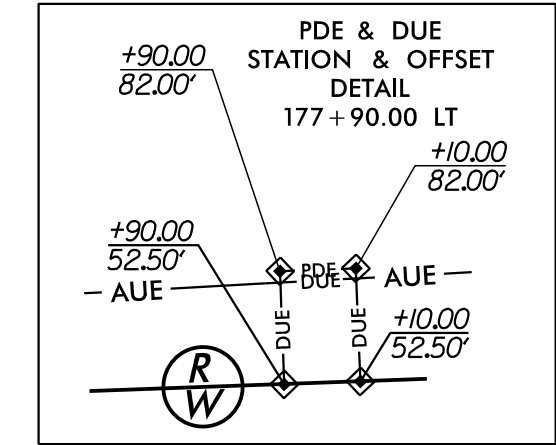
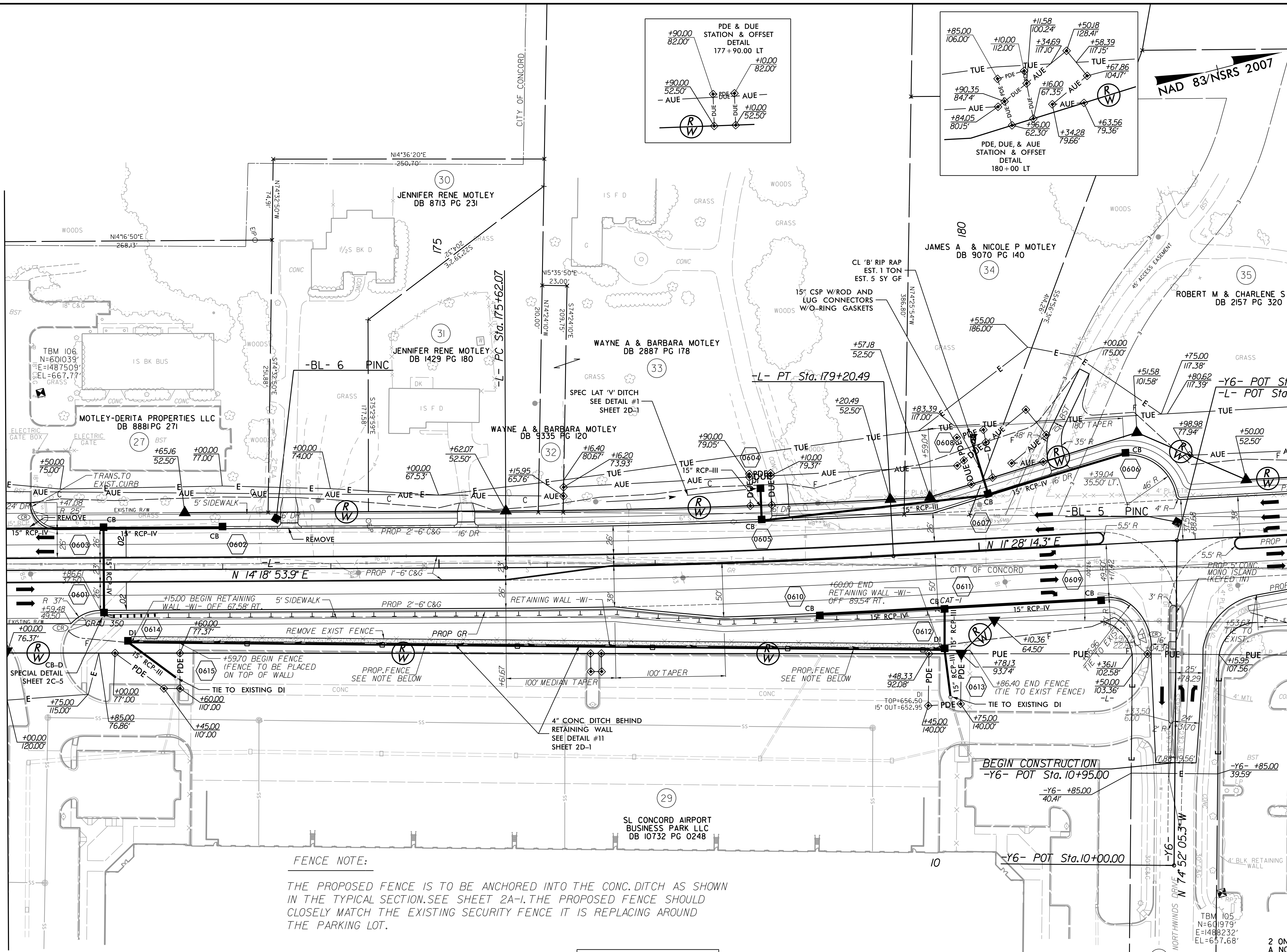


|  |  |   |  |
|--|--|---|--|
| PROJECT REFERENCE NO.<br><b>U-4910B</b>                                  |  | SHEET NO.<br><b>6</b>   |  |
| RW SHEET NO.   |  | HYDRAULICS ENGINEER   |  |
| ROADWAY DESIGN ENGINEER  |  | ENGINEER  |  |
|  |  |   |  |
| 1/18/2017  |  | 1/18/2017   |  |
| Prepared in the Office of:   |  | <b>AECOM</b><br><small>NC FIRM LICENSE No. F-0342<br/> 701 Corporate Center Drive, Suite 475<br/> Raleigh, NC 27607<br/> (919) 854-6200 • (919) 854-6259(FAX)</small> |  |
| <b>DOCUMENT NOT CONSIDERED FINAL<br/>UNLESS ALL SIGNATURES COMPLETED</b> |  |   |  |

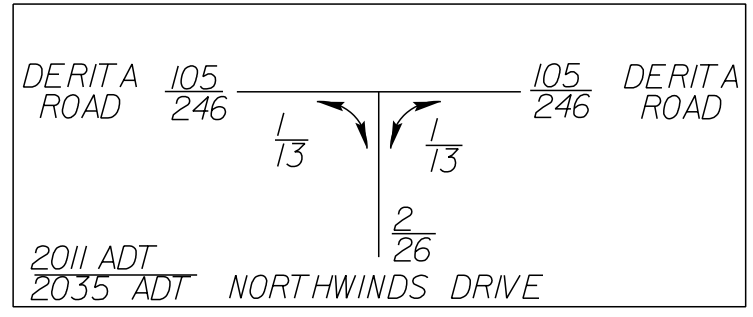
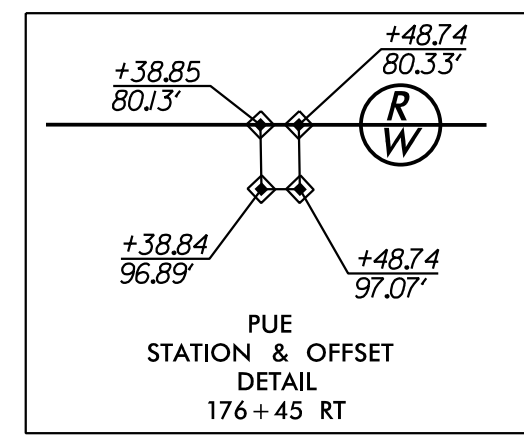
MATCHLINE -L- STA. 171+00 SEE PLAN SHEET 5

MATCHLINE -L- STA. 184+00 SEE PLAN SHEET 7



**FENCE NOTE:**  
THE PROPOSED FENCE IS TO BE ANCHORED INTO THE CONC. DITCH AS SHOWN IN THE TYPICAL SECTION. SEE SHEET 2A-I. THE PROPOSED FENCE SHOULD CLOSELY MATCH THE EXISTING SECURITY FENCE IT IS REPLACING AROUND THE PARKING LOT.

|                                |                                |
|--------------------------------|--------------------------------|
| -L-                            |                                |
| PI Sta 177+41.32               | PI Sta 186+18.82               |
| $\Delta = 2' 50'' 39.6''$ (LT) | $\Delta = 4' 01'' 53.0''$ (RT) |
| $D = 0' 47'' 36.9''$           | $D = 0' 47'' 36.9''$           |
| $L = 358.42'$                  | $L = 508.01'$                  |
| $T = 179.25'$                  | $T = 254.11'$                  |
| $R = 7,220.00'$                | $R = 7,220.00'$                |
| $DS = 50$ MPH                  | $DS = 50$ MPH                  |
| S.E. = NC                      | S.E. = NC                      |
| RO = N/A                       | RO = N/A                       |



SEE W SERIES SHEETS FOR RETAINING WALL DETAILS

FOR -L- PROFILE SEE SHEET 12  
FOR -Y6- PROFILE SEE SHEET 15

REVISIONS

Revisions:

DRA: R:\Roadway\Pro\4910B\U-4910B\U-4910B.dwg  
USER: schmid  
DATE: 1/17/2017  
TIME: 5:56:02 PM