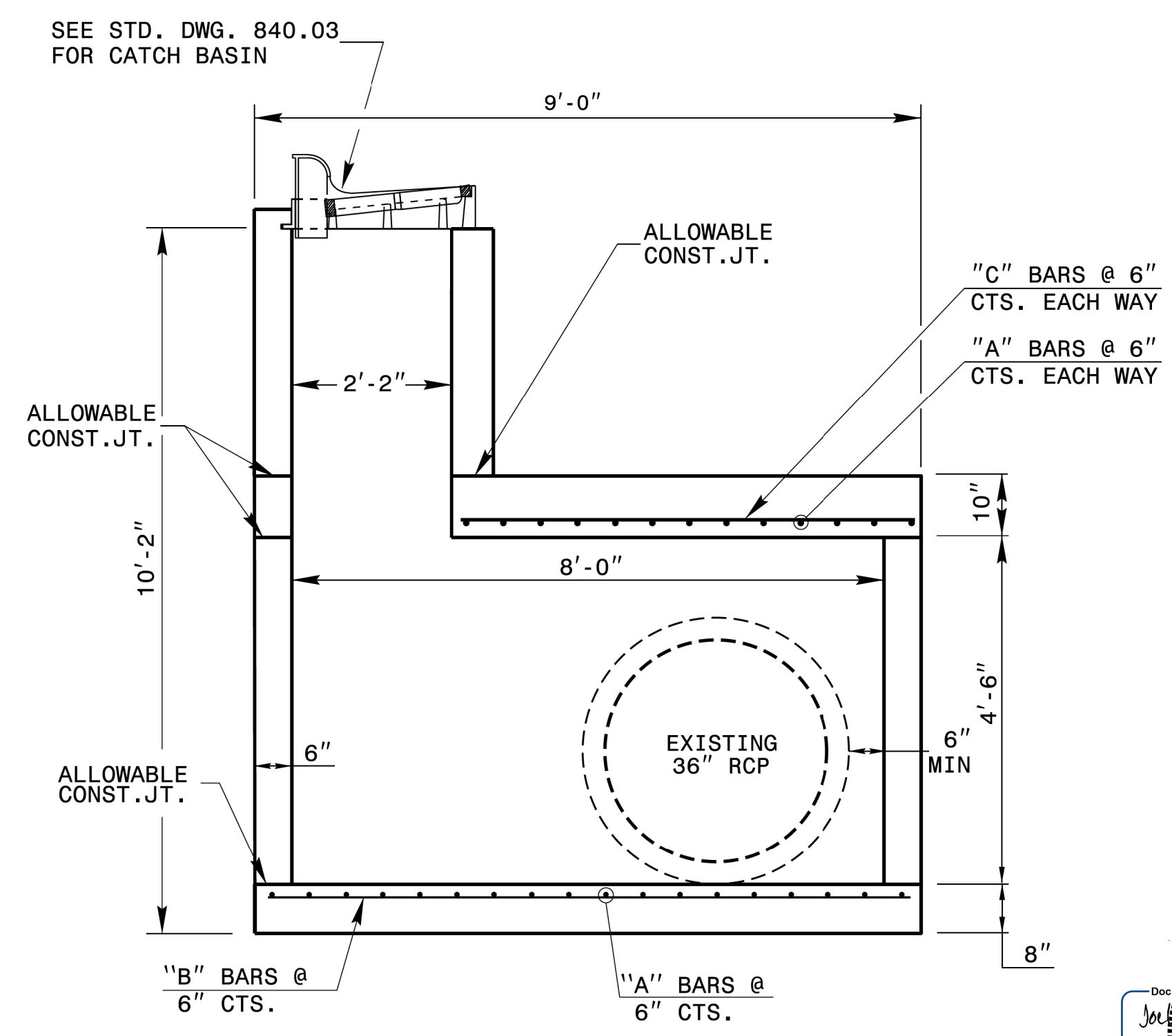
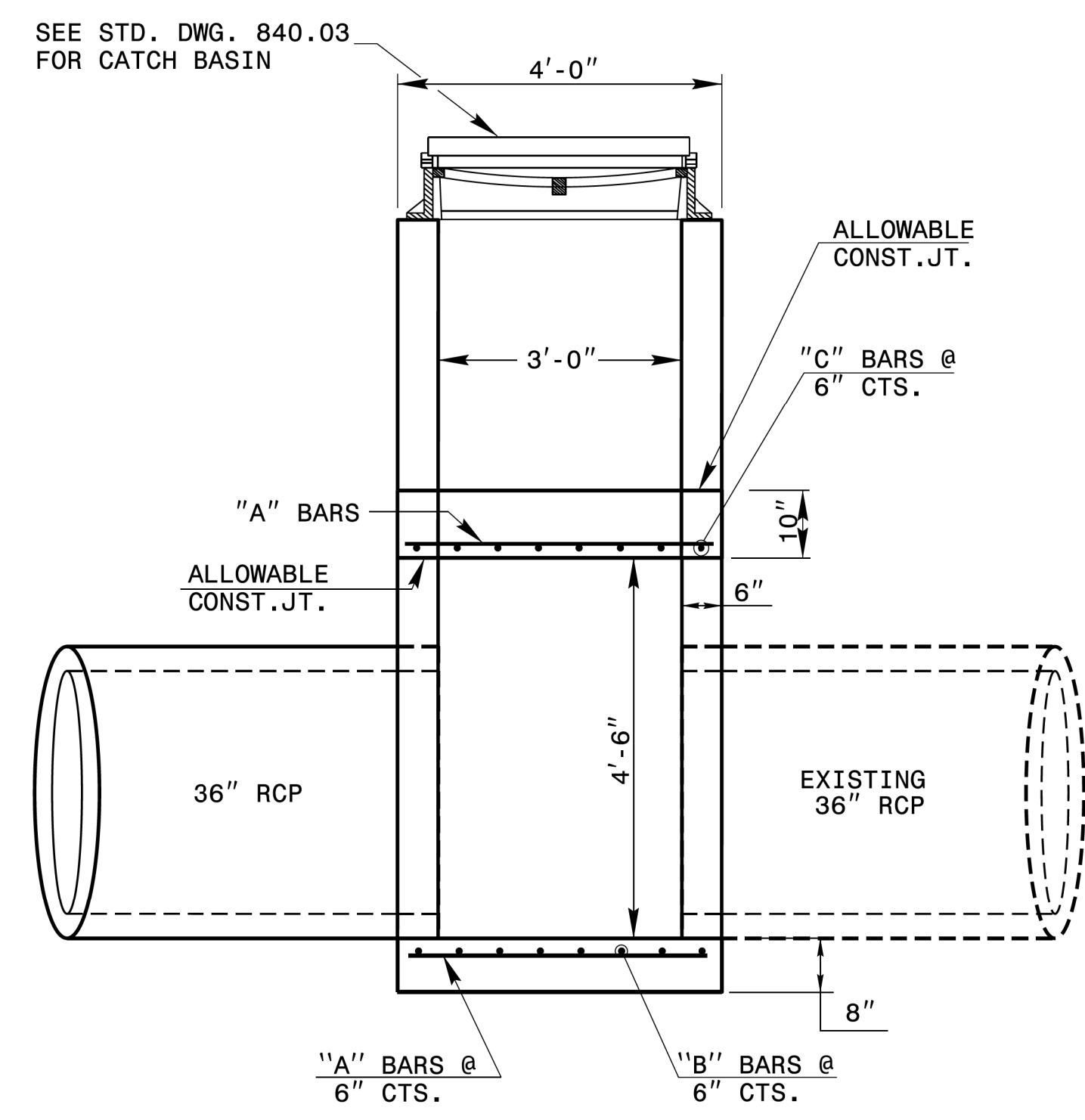


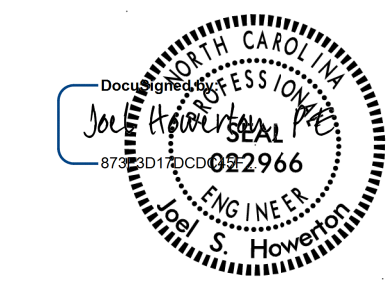
- GENERAL NOTES:**
1. USE CLASS "B" CONCRETE THROUGHOUT.
  2. CONSTRUCT CONCRETE BOX IN ACCORDANCE WITH SECTION 825 OF THE STANDARD SPECIFICATIONS.
  3. USE FORMS TO CONSTRUCT THE BOTTOM SLAB.
  4. ADJUST LENGTH OF STEEL BARS AS NEEDED TO COMPENSATE FOR PIPES AND FRAME AND GRATE OPENINGS.
  5. REINFORCING STEEL SHALL CONFORM TO ASTM A 615, GRADE 400.
  6. CUT OR BEND STEEL BARS AS NEEDED TO PROVIDE 2" CLEARANCE.
  7. LOCATE FRAME AND GRATE AS FIELD CONDITIONS DICTATE AND AS DIRECTED BY THE ENGINEER.
  8. DIMENSIONS OF CATCH BASIN MAY BE ADJUSTED AS DIRECTED BY THE ENGINEER.



**BILL OF MATERIALS**

BAR	QTY	SIZE	LENGTH	WEIGHT
A	29	#5	3'-8"	111
B	8	#5	8'-8"	72
C	8	#5	5'-6"	46
TOTAL REINF. STEEL (lbs.)				230
TOTAL CONC. CU. YDS.				4.8
DEDUCTIONS FOR ONE PIPE				
36" RC PIPE				0.20

NO DEDUCTIONS HAVE BEEN MADE TO ACCOMMODATE PIPES OR CATCH BASIN OPENING.



**CONTRACTS STANDARDS AND DEVELOPMENT UNIT**  
Office 919-707-6950 FAX 919-250-4119

**DETAIL OF SPECIAL OFFSET CATCH BASIN**

ORIGINAL BY: tsspell DATE: 05-22-2008  
 MODIFIED BY: rnbritt DATE: 06-07-2016  
 CHECKED BY: DATE:  
 FILE SPEC.: details/rbritten/english/urban/u4910b.cb36rcp.offset.dgn

**DOCUMENT NOT CONSIDERED FINAL  
UNLESS ALL SIGNATURES COMPLETED**

REVISIONS

Revisions:

Drawn: R:\Roadway\Proj\4910B\rdy\_detail\0120\_2.dgn  
 User: scheid  
 Date: 9/19/2016  
 Time: 2:33:29 PM