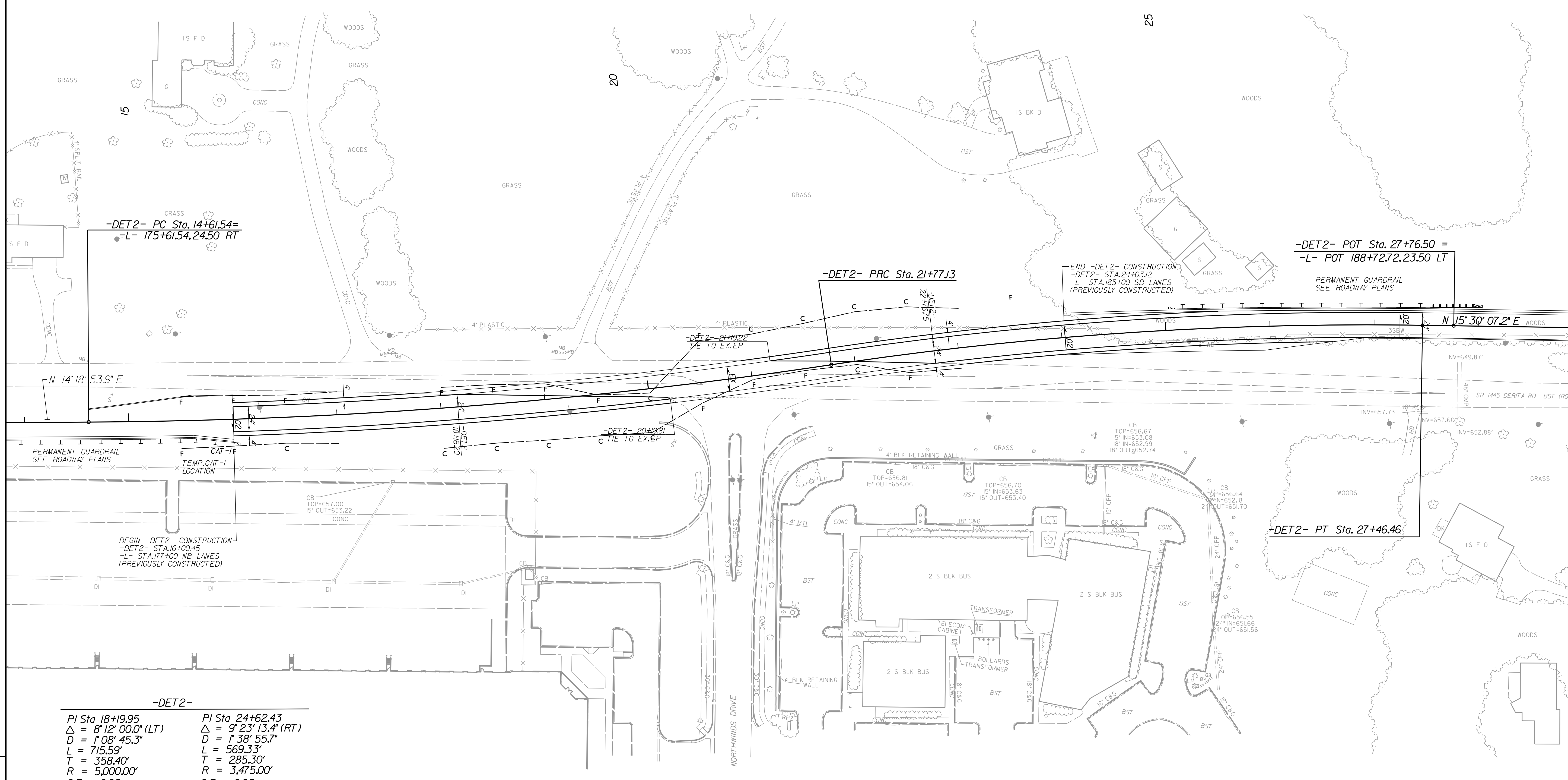


# -DET2- DETOUR DETAIL

NAD 83/NSRS 2007

PROJECT REFERENCE NO. <i>U-4910B</i>	SHEET NO. <i>2B-6</i>
RW SHEET NO.	
ROADWAY DESIGN ENGINEER <i>[Signature]</i>	HYDRAULICS ENGINEER <i>[Signature]</i>
1/23/2017	1/23/2017
Prepared in the Office of: <b>AECOM</b>	NC FIRM LICENSE No. F-0342 701 Corporate Center Drive, Suite 475 Raleigh, NC 27607 (919) 854-6200 • (919) 854-6259(FAX)
<b>DOCUMENT NOT CONSIDERED FINAL UNLESS ALL SIGNATURES COMPLETED</b>	



**-DET2-**

PI Sta 18+19.95	PI Sta 24+62.43
$\Delta = 8' 12'' 00.0''$ (LT)	$\Delta = 9' 23'' 13.4''$ (RT)
D = 1' 08' 45.3"	D = 1' 38' 55.7"
L = 715.59'	L = 569.33'
T = 358.40'	T = 285.30'
R = 5,000.00'	R = 3,475.00'
S.E. = 0.02	S.E. = 0.02

REVISIONS

Revisions:

Dwg: R:\Roadway\Proj\4910\rd\_detour\_0126.dgn  
 User: schmid  
 Date: 1/23/2017  
 Time: 9:56:53 AM

SEE SHEET 17 FOR PROFILE