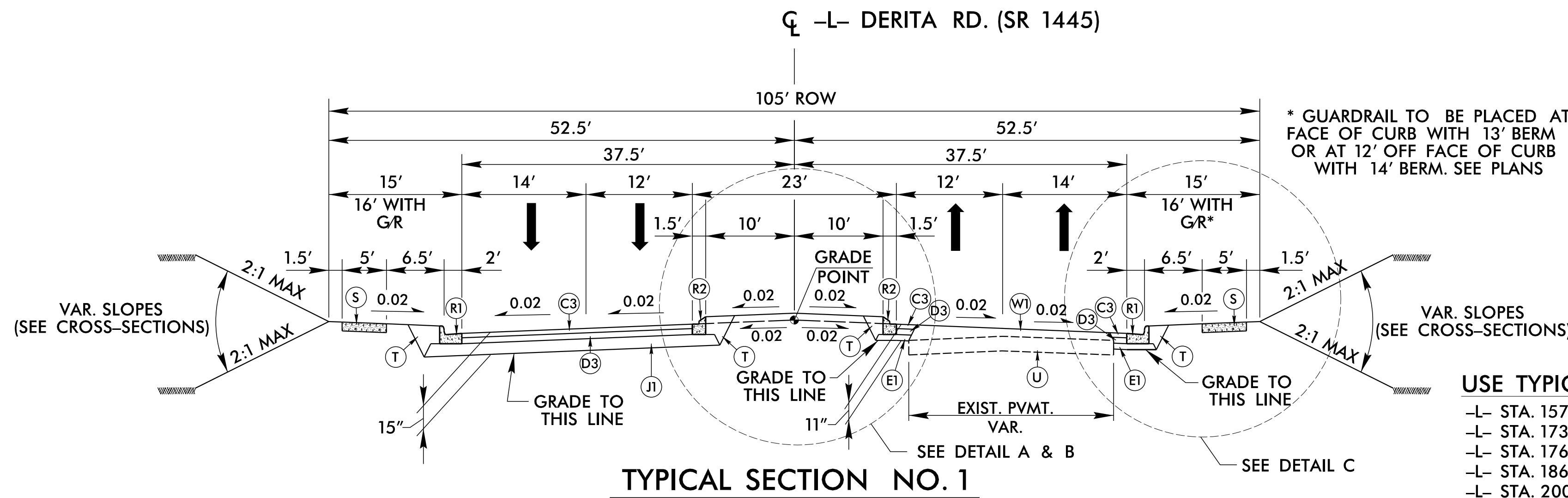
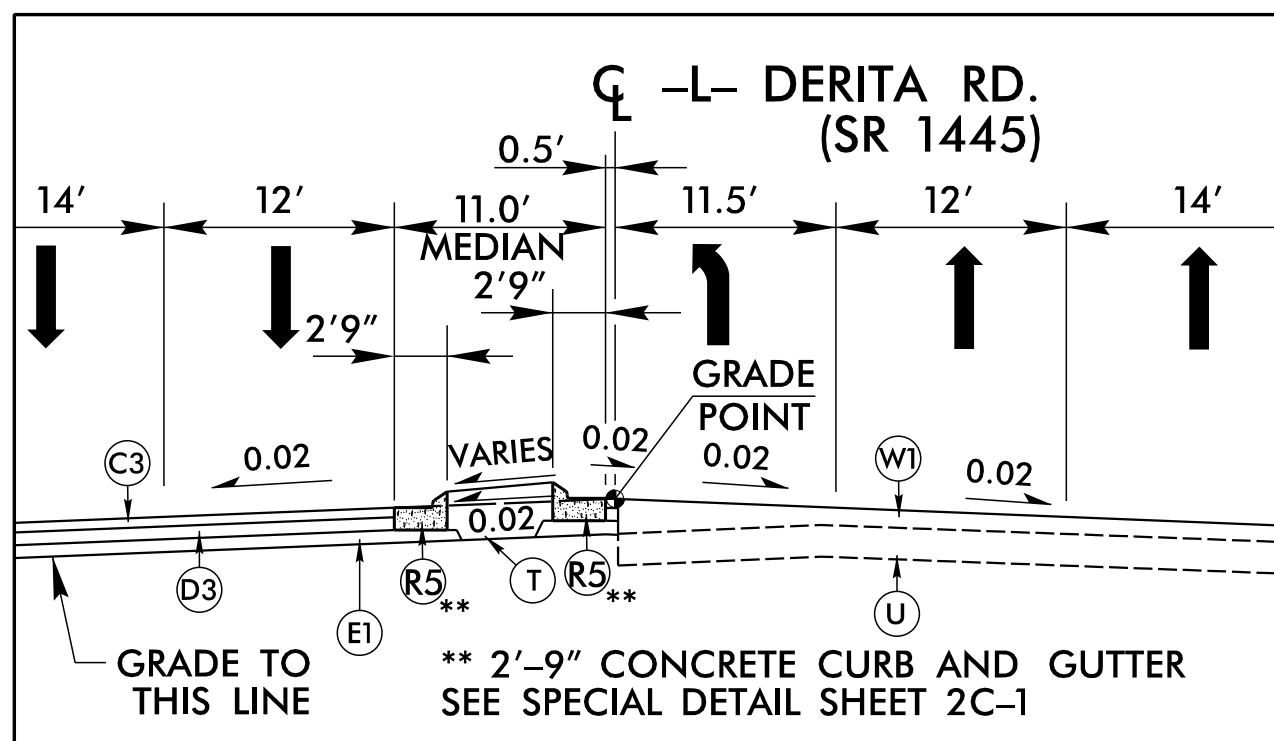


PROJECT REFERENCE NO. U-4910B	SHEET NO. 2A-1
RW SHEET NO.	
ROADWAY DESIGN ENGINEER <i>[Signature]</i>	PAVEMENT ENGINEER <i>[Signature]</i>
NC FIRM LICENSE No. F-0342 701 Corporate Center Drive, Suite 475 Raleigh, NC 27607 (919) 854-6200 • (919) 854-6259 (FAX)	
DOCUMENT NOT CONSIDERED FINAL UNLESS ALL SIGNATURES COMPLETED	

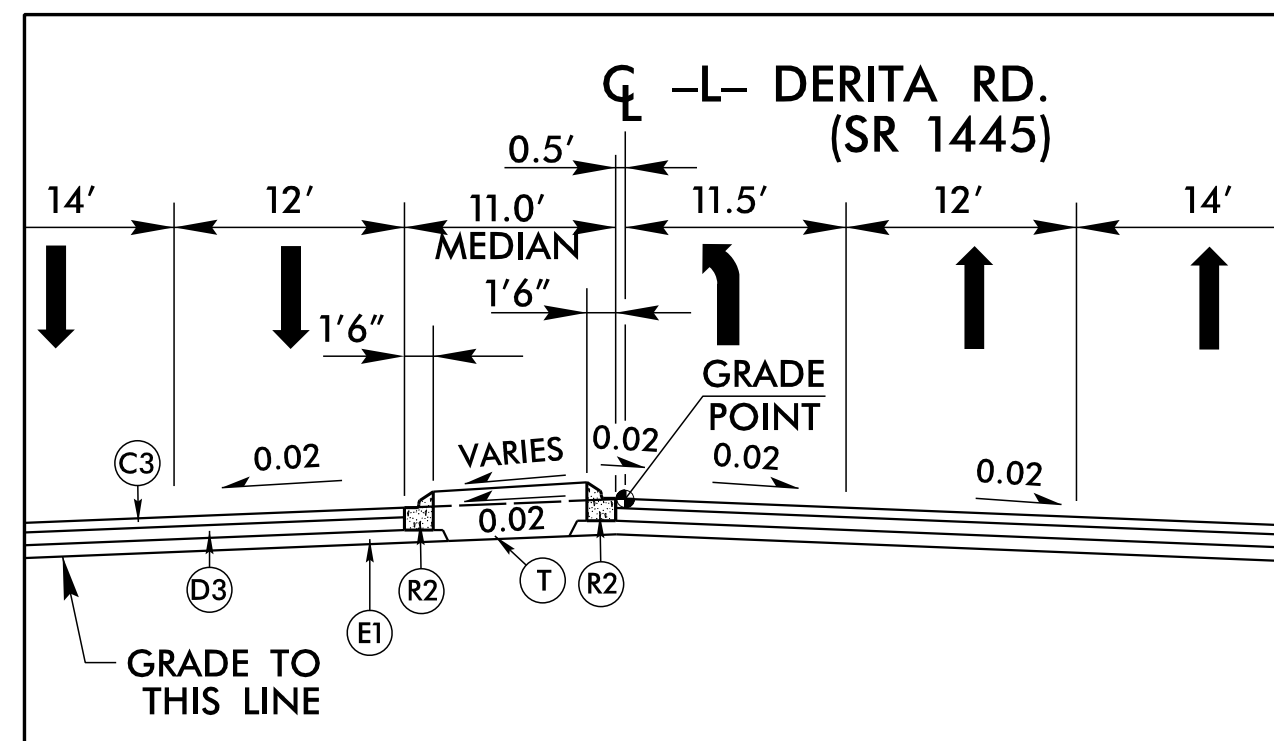
PAVEMENT SCHEDULE <i>(FINAL PAVEMENT DESIGN)</i>	
C1	PROP. APPROX. 1 1/2" ASPHALT CONCRETE SURFACE COURSE, TYPE S9.5B, AT AN AVERAGE RATE OF 168 LBS. PER SQ. YD.
C2	PROP. APPROX. 2" ASPHALT CONCRETE SURFACE COURSE, TYPE S9.5B, AT AN AVERAGE RATE OF 224 LBS. PER SQ. YD.
C3	PROP. APPROX. 3" ASPHALT CONCRETE SURFACE COURSE, TYPE S9.5B, AT AN AVERAGE RATE OF 168 LBS. PER SQ. YD. IN EACH OF TWO LAYERS.
C4	PROP. VAR. DEPTH ASPHALT CONCRETE SURFACE COURSE, TYPE S9.5B, AT AN AVERAGE RATE OF 112 LBS. PER SQ. YD. PER 1" DEPTH. TO BE PLACED IN LAYERS NOT TO EXCEED 2" IN DEPTH.
D1	PROP. APPROX. 2 1/2" ASPHALT CONCRETE INTERMEDIATE COURSE, TYPE I19.0B, AT AN AVERAGE RATE OF 285 LBS. PER SQ. YD.
D2	PROP. APPROX. 3" ASPHALT CONCRETE INTERMEDIATE COURSE, TYPE I19.0B, AT AN AVERAGE RATE OF 342 LBS. PER SQ. YD.
D3	PROP. APPROX. 4" ASPHALT CONCRETE INTERMEDIATE COURSE, TYPE I19.0B, AT AN AVERAGE RATE OF 456 LBS. PER SQ. YD.
D4	PROP. VAR. DEPTH ASPHALT CONCRETE INTERMEDIATE COURSE, TYPE I19.0B, AT AN AVERAGE RATE OF 114 LBS. PER SQ. YD. PER 1" DEPTH, TO BE PLACED IN LAYERS NOT LESS THAN 2 1/2" IN DEPTH OR GREATER THAN 4" IN DEPTH.
E1	PROP. APPROX. 4" ASPHALT CONCRETE BASE COURSE, TYPE B25.0B, AT AN AVERAGE RATE OF 456 LBS. PER SQ. YD.
E2	PROP. APPROX. 4 1/2" ASPHALT CONCRETE BASE COURSE, TYPE B25.0B, AT AN AVERAGE RATE OF 513 LBS. PER SQ. YD.
E3	PROP. APPROX. 5 1/2" ASPHALT CONCRETE BASE COURSE, TYPE B25.0B, AT AN AVERAGE RATE OF 627 LBS. PER SQ. YD.
E4	PROP. VAR. DEPTH ASPHALT CONCRETE BASE COURSE, TYPE B25.0B, AT AN AVERAGE RATE OF 114 LBS. PER SQ. YD. PER 1" DEPTH. TO BE PLACED IN LAYERS NOT LESS THAN 3" IN DEPTH OR GREATER THAN 5 1/2" IN DEPTH.
J1	PROP. 8" AGGREGATE BASE COURSE.
J2	PROP. 10" AGGREGATE BASE COURSE.
J3	PROP. 12" AGGREGATE BASE COURSE.
J4	PROP. VAR. DEPTH AGGREGATE BASE COURSE.
R1	2'-6" CONCRETE CURB AND GUTTER.
R2	1'-6" CONCRETE CURB AND GUTTER.
R3	5" MONOLITHIC CONCRETE ISLAND. (KEYED IN)
R4	EXISTING CONCRETE CURB AND GUTTER.
R5	2'-9" CONCRETE CURB AND GUTTER.
S	4" CONCRETE SIDEWALK.
T	EARTH MATERIAL
U	EXISTING PAVEMENT
V	MILLING BITUMINOUS PAVEMENT. 1 1/2" DEPTH.
W1	VARIABLE DEPTH ASPHALT PAVEMENT (SEE STANDARD WEDGING DETAIL SHEET No. 2A-1)
W2	VARIABLE DEPTH ASPHALT PAVEMENT (SEE STANDARD WEDGING DETAIL SHEET No. 2A-1)



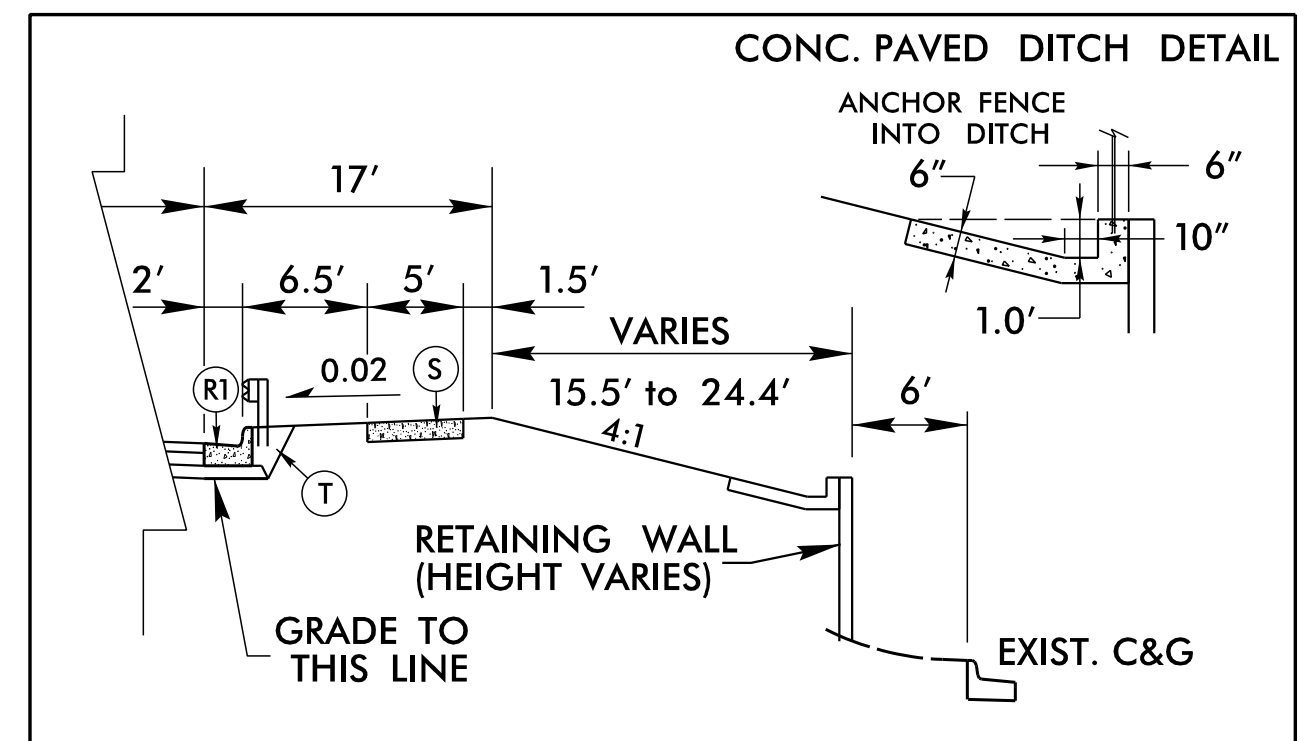
USE TYPICAL SECTION NO. 1
 -L- STA. 157+44.41 TO 173+50.00 (RESURF)
 -L- STA. 173+50.00 TO 176+50.00 (FULL DEPTH)
 -L- STA. 176+50.00 TO 186+50.00 (RESURF)
 -L- STA. 186+50.00 TO 200+00.00 (FULL DEPTH)
 -L- STA. 200+00.00 TO 229+00.00 (RESURF)



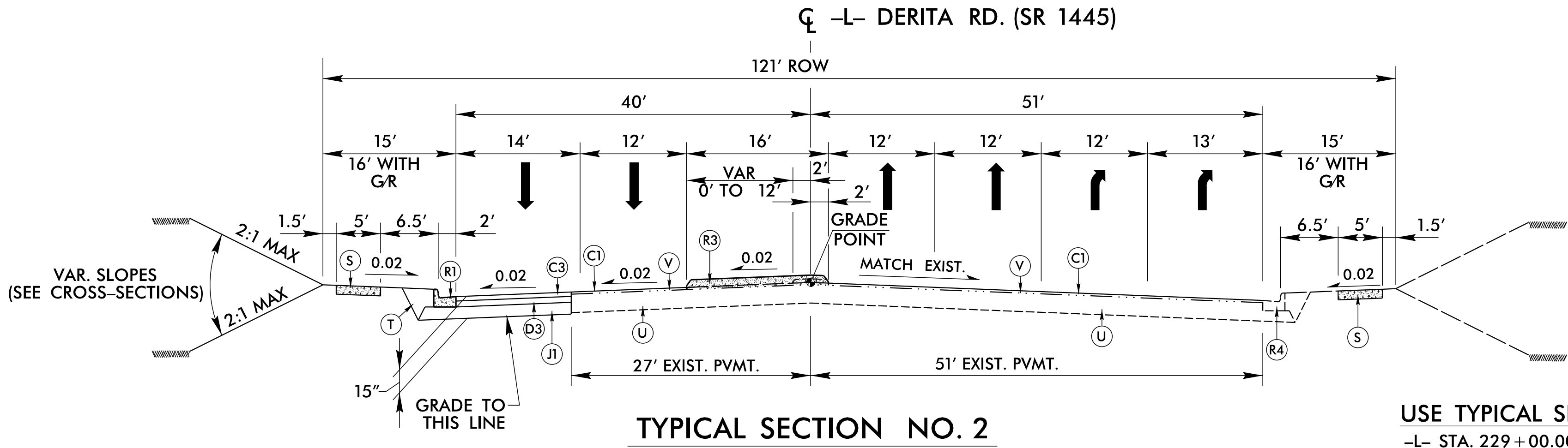
DETAIL A
 USE DETAIL A IN CONJUNCTION WITH
 TYPICAL SECTION NO. 1
 -L- STA. 157+44.41 TO 158+07.03



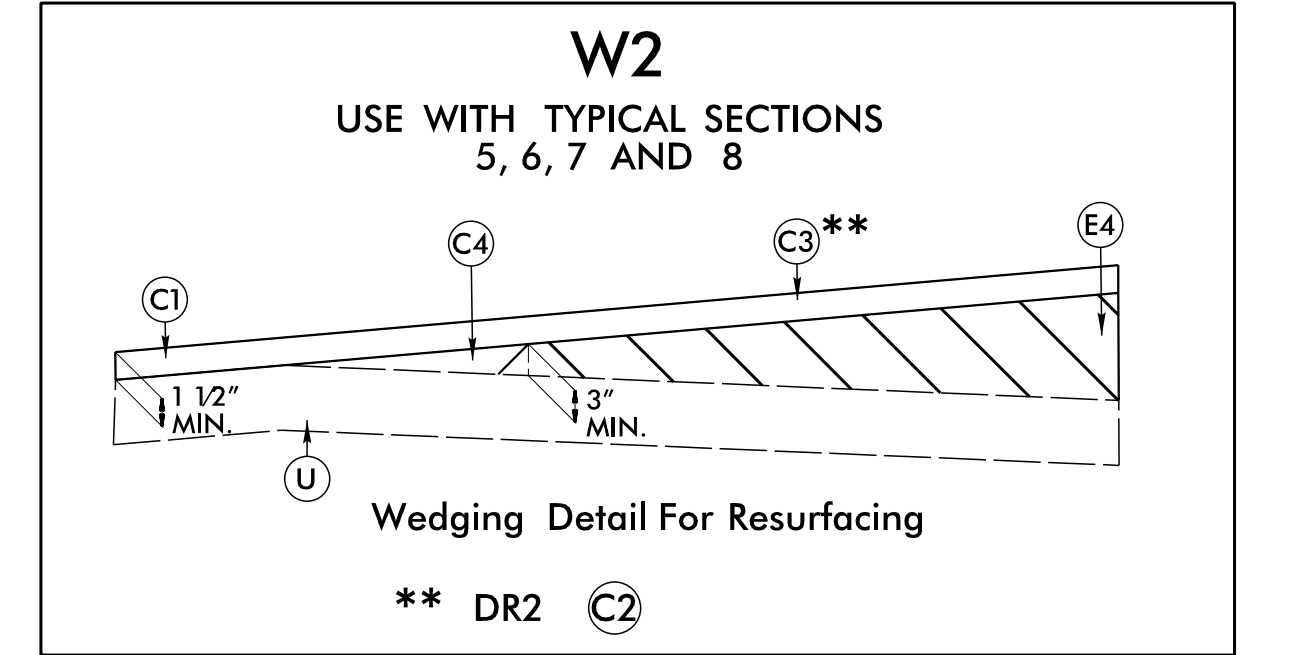
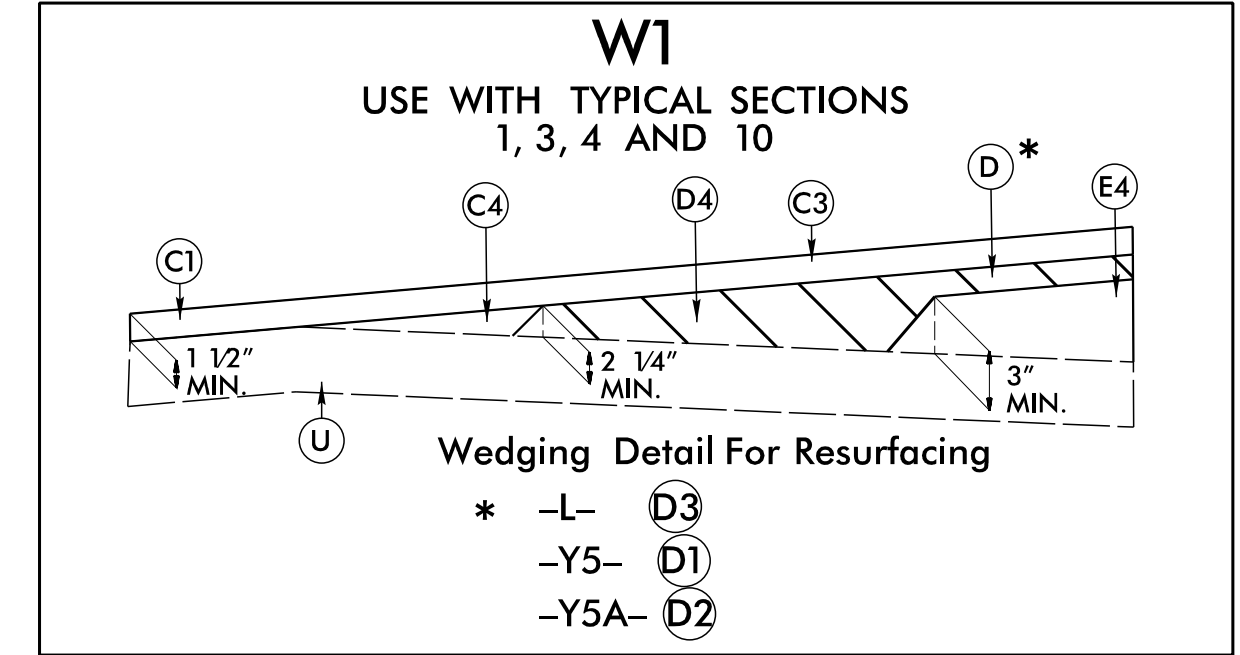
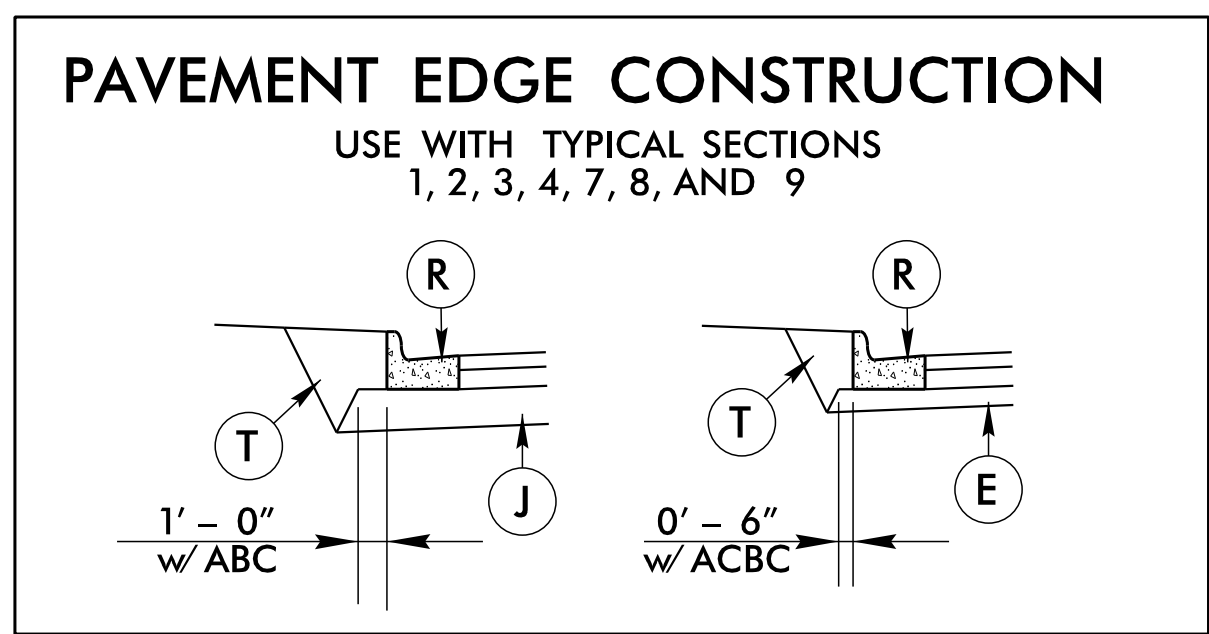
DETAIL B
 USE DETAIL B IN CONJUNCTION WITH
 TYPICAL SECTION NO. 1 FOR MEDIAN LOCATION
 -L- STA. 159+43.83 TO 164+39.72 RT SIDE
 -L- STA. 176+61.67 TO 181+10.17 LT SIDE
 -L- STA. 182+41.44 TO 186+91.44 RT SIDE



DETAIL C
 USE DETAIL A IN CONJUNCTION WITH
 TYPICAL SECTION NO. 1
 -L- STA. 172+15.00 TO 179+60.00



USE TYPICAL SECTION NO. 2
 -L- STA. 229+00.00 TO 239+28.50 (RESURF)



REVISIONS:
 USER: schmid
 DATE: 1/12/2017
 TIME: 10:51:49 AM

NOTE: PAVEMENT EDGE SLOPES ARE 1:1 UNLESS SHOWN OTHERWISE.