

**This electronic collection of documents is provided
for the convenience of the user
and is Not a Certified Document –**

**The documents contained herein were originally issued
and sealed by the individuals whose names and license
numbers appear on each page, on the dates appearing
with their signature on that page.**

**This file or an individual page
shall not be considered a certified document.**

PROJECT REFERENCE NO.	SHEET NO.
U-4910A	SGN-1
APPROVED: _____	
DATE: _____	
SEAL	
	

**STATE OF NORTH CAROLINA
DEPARTMENT OF TRANSPORTATION**

**SIGNING PLAN
CABARRUS COUNTY**

**LOCATION: DERITA ROAD (SR 1445) FROM NORTH OF
CONCORD MILLS BLVD (SR 2864) TO AVIATION
BLVD**

T.I.P.: U-4910A

ROADWAY STANDARD DRAWING

THE FOLLOWING ROADWAY STANDARDS AS APPEAR IN "ROADWAY STANDARD DRAWINGS" - PROJECT SERVICES UNIT - N.C. DEPARTMENT OF TRANSPORTATION - RALEIGH, N.C., DATED JANUARY 2012 ARE APPLICABLE TO THIS PROJECT AND BY REFERENCE HEREBY ARE CONSIDERED A PART OF THESE PLANS:

STD. NO.	TITLE
904.10	ORIENTATION OF GROUND MOUNTED SIGNS
904.50	MOUNTING OF TYPE 'D', 'E' AND 'F' SIGNS ON 'U' CHANNEL POSTS

GENERAL NOTES

- . SIGNS FURNISHED BY STATE
- . ALL TYPE 'D' SIGNS SHALL BE MOUNTED ON TWO U-CHANNEL POSTS UNLESS OTHERWISE INDICATED ON THE PLANS.
- . IF REMOVAL OR RELOCATION OF SIGNS ON PRIVATE STREET (NON-STATE MAINTAINED) IS REQUIRED DUE TO CONSTRUCTION, THE CONTRACTOR SHALL INFORM THE ENGINEER. THE WORK WILL BE COMPLETED BY OTHERS.
- . WHEN NOT STATIONED OR DIMENSIONED ON PLANS, ALL 'E' AND 'F' SIGNS SHALL BE FIELD LOCATED BY THE ENGINEER
- . ALL EXISTING SIGNS ON "U" CHANNEL POST WITHIN THE PROJECT LIMITS SHALL BE REMOVED AND DISPOSED OF UNLESS OTHERWISE NOTED ON PLANS.
- . WHEN EXISTING SIGNS ARE REMOVED AND INSTALLED ON NEW SUPPORTS, THE RE-ERECTION SHALL IMMEDIATELY FOLLOW THE REMOVAL.
- . THE BACKGROUND FOR TYPE E & F SIGNS SHALL BE TYPE C REFLECTIVE SHEETING.
- . SEE ROADWAY PLANS FOR GUARD/GUIDE RAIL DETAILS.
- . REMOVE ALL EXISTING SIGNS WITHIN THE PROJECT LIMITS UNLESS OTHERWISE NOTED ON THE PLANS.

SUMMARY OF QUANTITIES

ITEM NO.		ITEM DESCRIPTION	QUANTITY	UNIT
DESC. NO.	SECT. NO.			
4072000000	903	SUPPORTS, 3 LB STEEL U-CHANNEL	449	L.F.
4102000000	904	SIGN ERECTION, TYPE E	31	E.A.
4155000000	907	DISPOSAL OF SIGN SYSTEM, U-CHANNEL	13	E.A.
4158000000	907	DISPOSAL OF SIGN SYSTEM, WOOD	1	E.A.

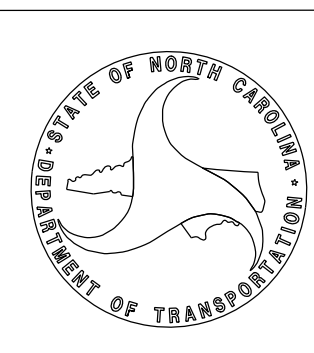
INDEX

SHEET NO.	DESCRIPTION
SGN-1	TITLE SHEET
SGN-2	TYPE "E" SIGNS
SGN-3 - SGN-6	SIGN ROADWAY SHEETS

CONTRACT:

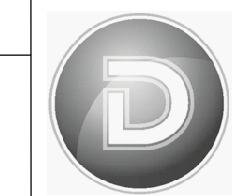
PLAN REVIEWED BY: N.C.D.O.T. SIGNING AND DELINEATION UNIT

Kevin L. Jordan SIGNING & DELINEATION REGIONAL ENGINEER
Jon-Robert N. Navarrete SIGNING & DELINEATION PROJECT DESIGN ENGINEER

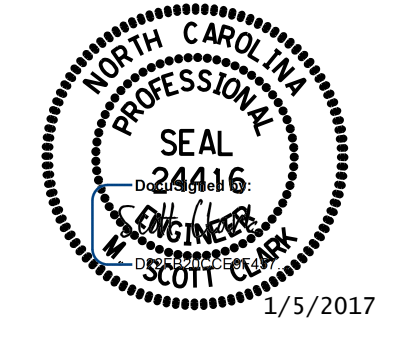


PLAN PREPARED BY: DAVENPORT

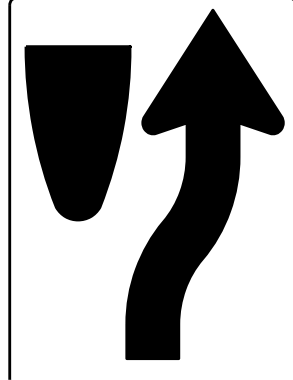
M. Scott Clark, PE PROJECT ENGINEER



DAVENPORT
TRANSPORTATION CONSULTING
HOME OFFICE:
335 WEST FOURTH STREET, SUITE 2A
WINSTON-SALEM, NC 27101
336.744.9138 www.davenportnc.com
NCELS FIRM LICENSE NO. C-2322




(401) QUANTITY REQ'D 3



24 X 30
R4-7

ONE "U" POST PER SIGN

(407) QUANTITY REQ'D 1




30 X 30
I-5

ONE "U" POST PER SIGN

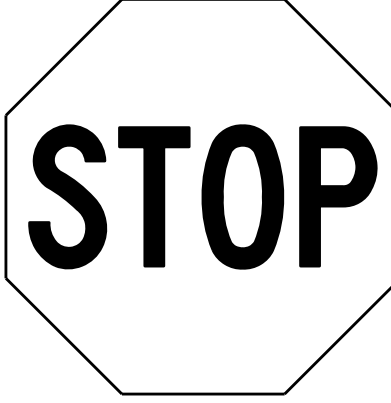
(414) QUANTITY REQ'D 4

54 X 18
R6-1R



TWO "U" POSTS PER SIGN

(402) QUANTITY REQ'D 2




36 X 36
R1-1

MOUNT BELOW SIGN 408
IN 2 INSTALLATIONS
ONE "U" POST PER SIGN

(408) QUANTITY REQ'D 2


36 X 12
R6-1R



MOUNT ABOVE SIGN 402
IN 2 INSTALLATIONS


(403) QUANTITY REQ'D 5

54 X 18
R6-1L



TWO "U" POSTS PER SIGN

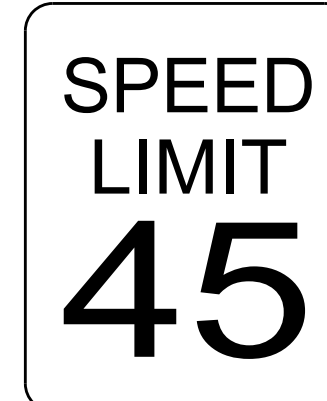
(411) QUANTITY REQ'D 4



36 X 24
R5-1a

ONE "U" POST PER SIGN

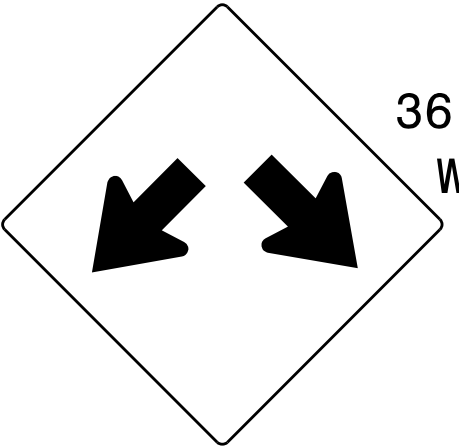
(404) QUANTITY REQ'D 5



36 X 48
R2-1

ONE "U" POST PER SIGN

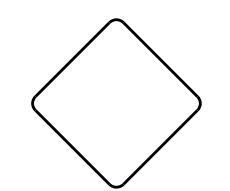
(412) QUANTITY REQ'D 1



36 X 36
W12-1

ONE "U" POST PER SIGN


(406) QUANTITY REQ'D 3



18 x 18
OM1-3

MOUNT BELOW SIGN 401
IN 3 INSTALLATIONS

(413) QUANTITY REQ'D 1



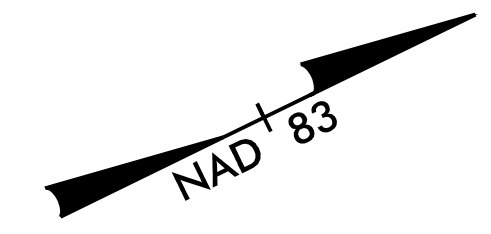
36 X 36
R5-1

ONE "U" POST PER SIGN

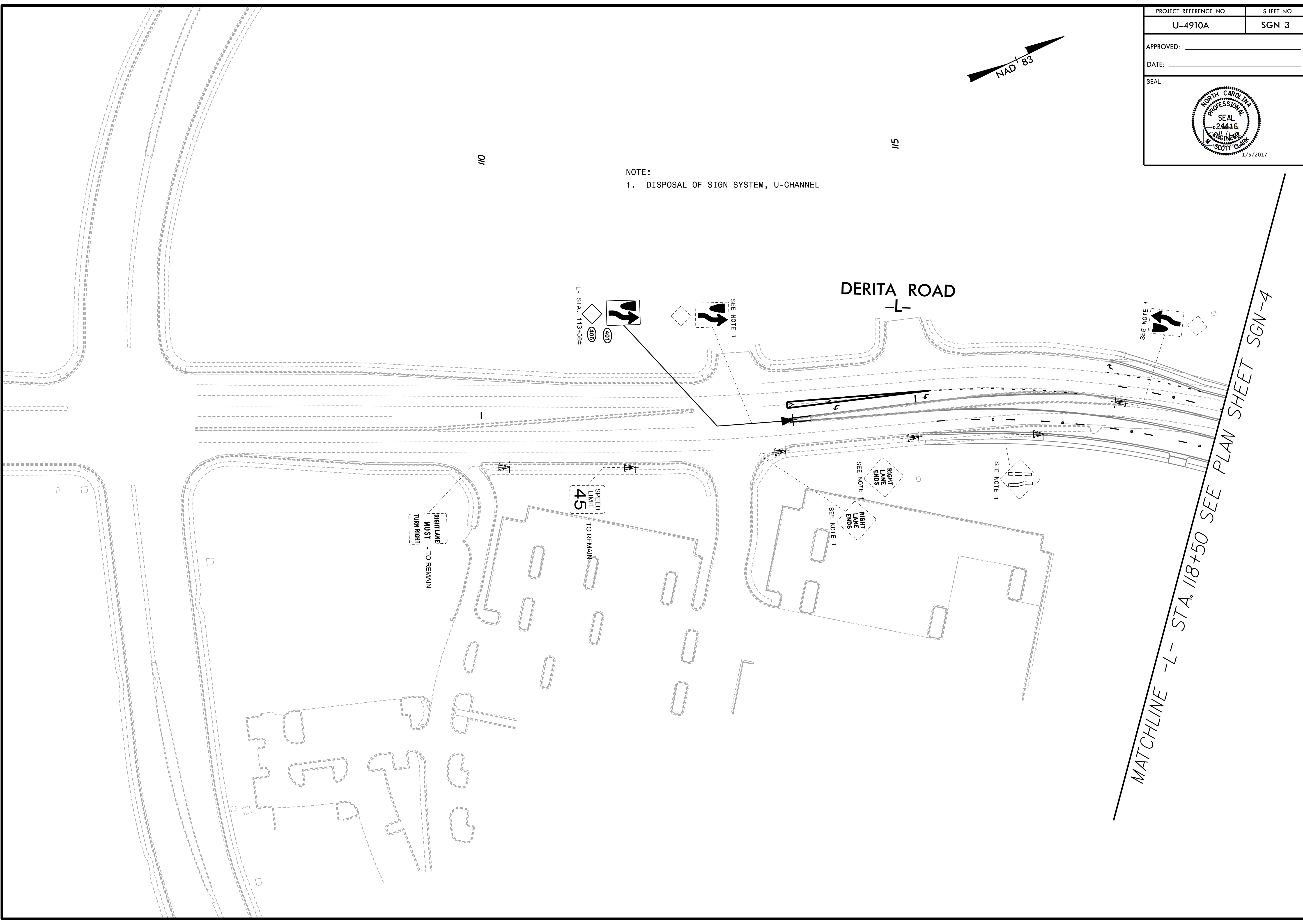
TYPE "E" SIGNS

1/5/2017 11:00:01 AM U-4910A Cabarrus County CAD\RDWY\PLANS\SGN-U-4910A.sgn-psd.s02.dgn

PROJECT REFERENCE NO.	SHEET NO.
U-4910A	SGN-3
APPROVED: _____	
DATE: _____	
SEAL	



NOTE:
1. DISPOSAL OF SIGN SYSTEM, U-CHANNEL



MATCHLINE -L- STA. 118+50 SEE PLAN SHEET SGN-4

SEE NOTE 1

SEE NOTE 1

SEE NOTE 1

SEE NOTE 1

-L- STA. 113+50#

RIGHT LANE MUST TURN RIGHT - TO REMAIN

SPEED LIMIT 45 TO REMAIN

RIGHT LANE ENDS

RIGHT LANE ENDS

SEE NOTE 1

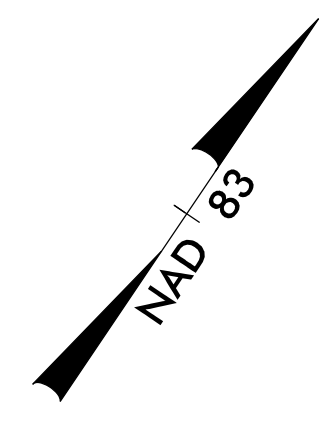
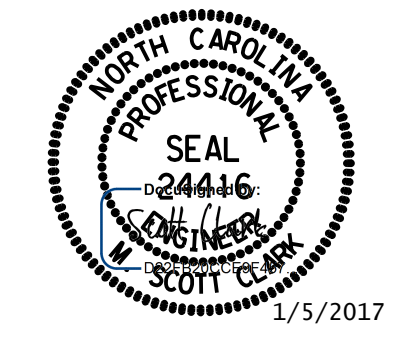
SEE NOTE 1

DERITA ROAD -L-

110

115

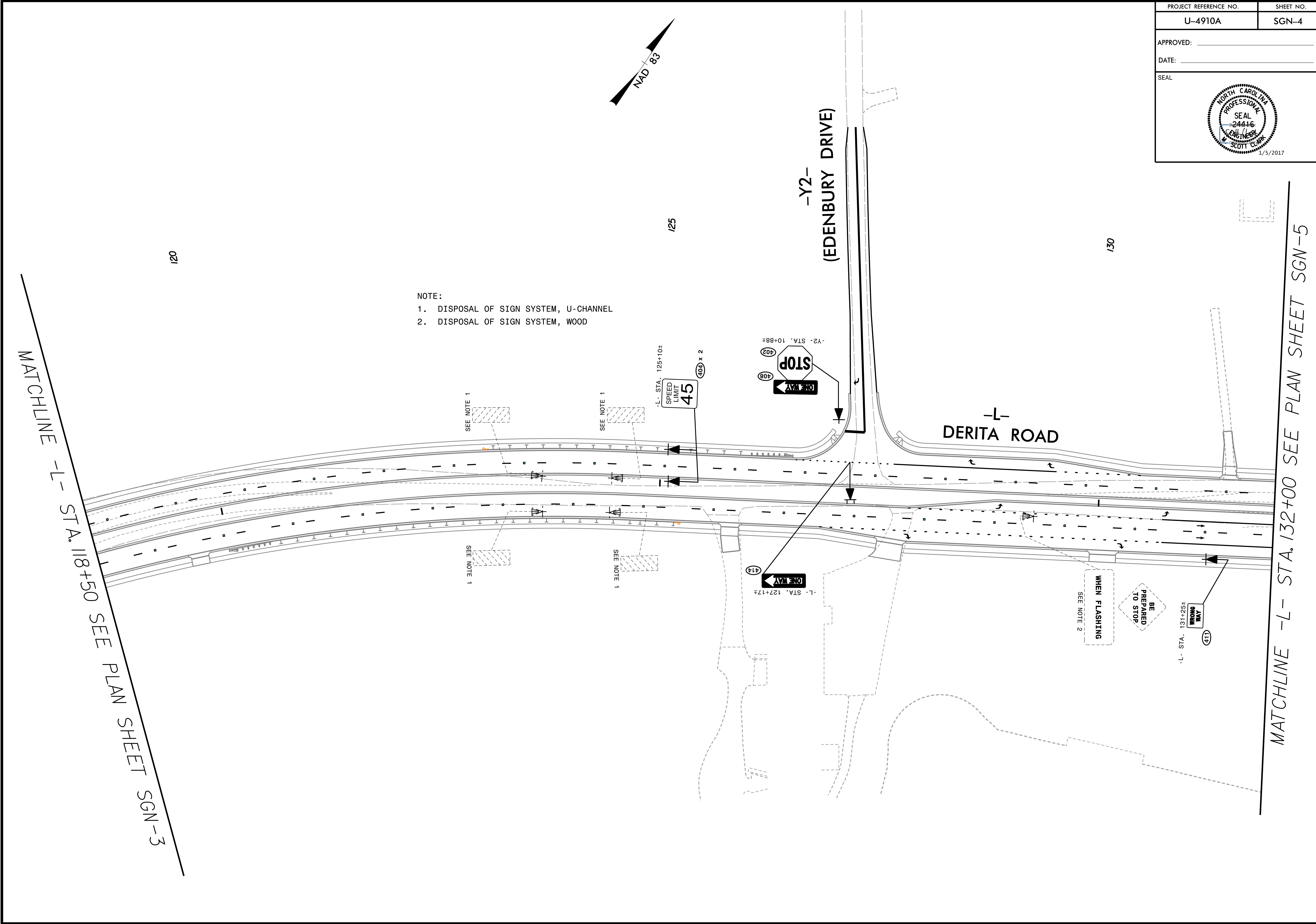
PROJECT REFERENCE NO.	SHEET NO.
U-4910A	SGN-4
APPROVED: _____	
DATE: _____	
SEAL	



MATCHLINE -L- STA. 118+50 SEE PLAN SHEET SGN-3

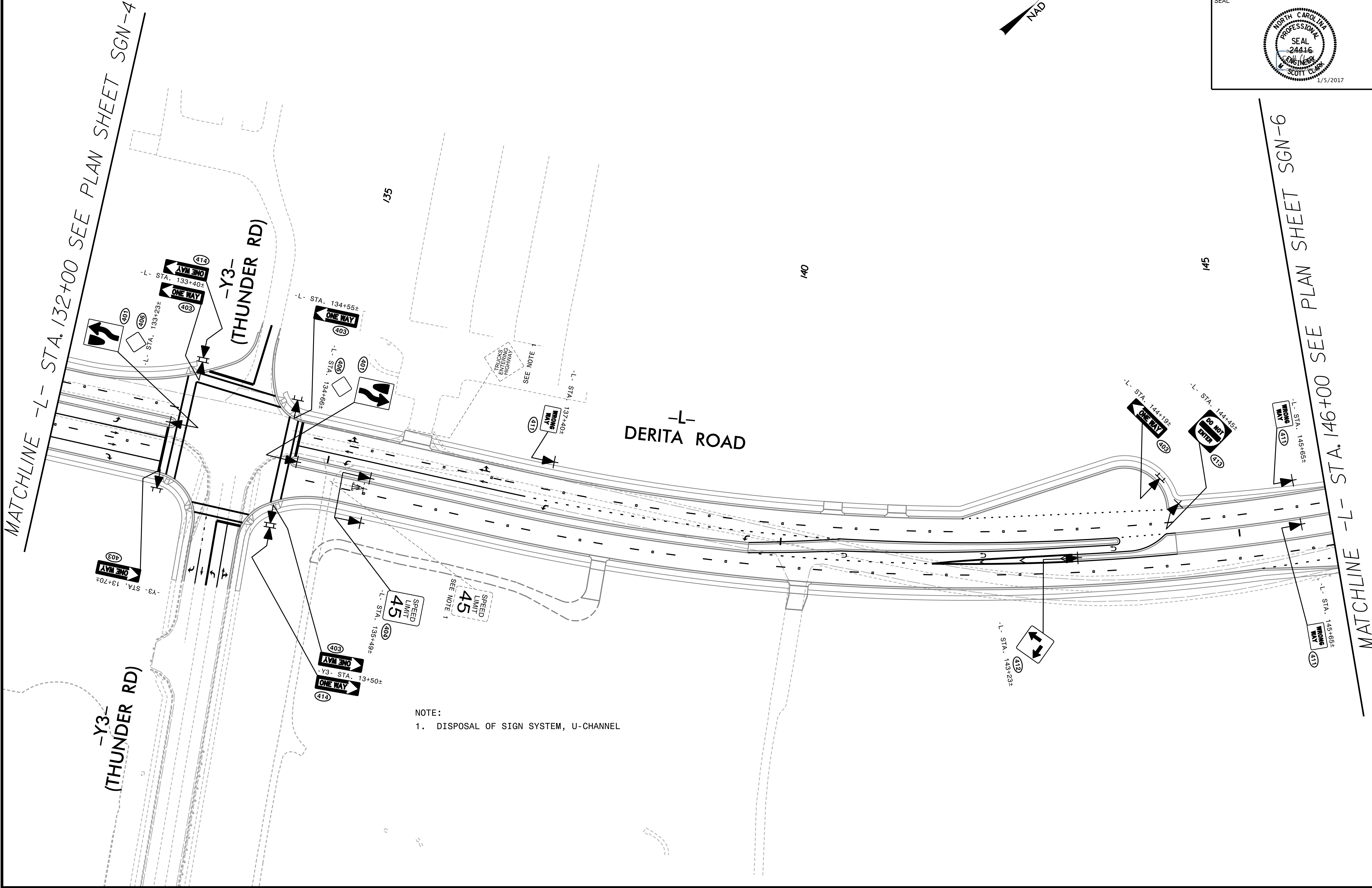
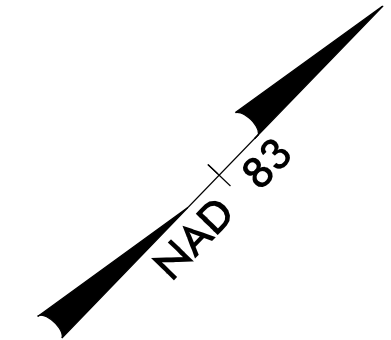
MATCHLINE -L- STA. 132+00 SEE PLAN SHEET SGN-5

- NOTE:
1. DISPOSAL OF SIGN SYSTEM, U-CHANNEL
 2. DISPOSAL OF SIGN SYSTEM, WOOD



PROJECT REFERENCE NO. U-4910A	SHEET NO. SGN-5
APPROVED: _____	
DATE: _____	
SEAL	

1/5/2017



MATCHLINE -L- STA. 132+00 SEE PLAN SHEET SGN-4

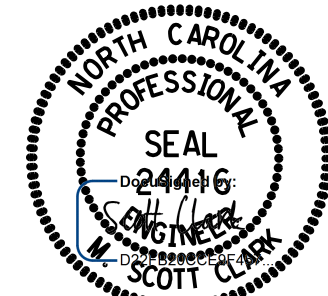
-Y3-
(THUNDER RD)

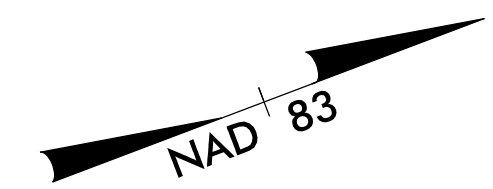
-Y3-
(THUNDER RD)

-L-
DERITA ROAD

MATCHLINE -L- STA. 146+00 SEE PLAN SHEET SGN-6

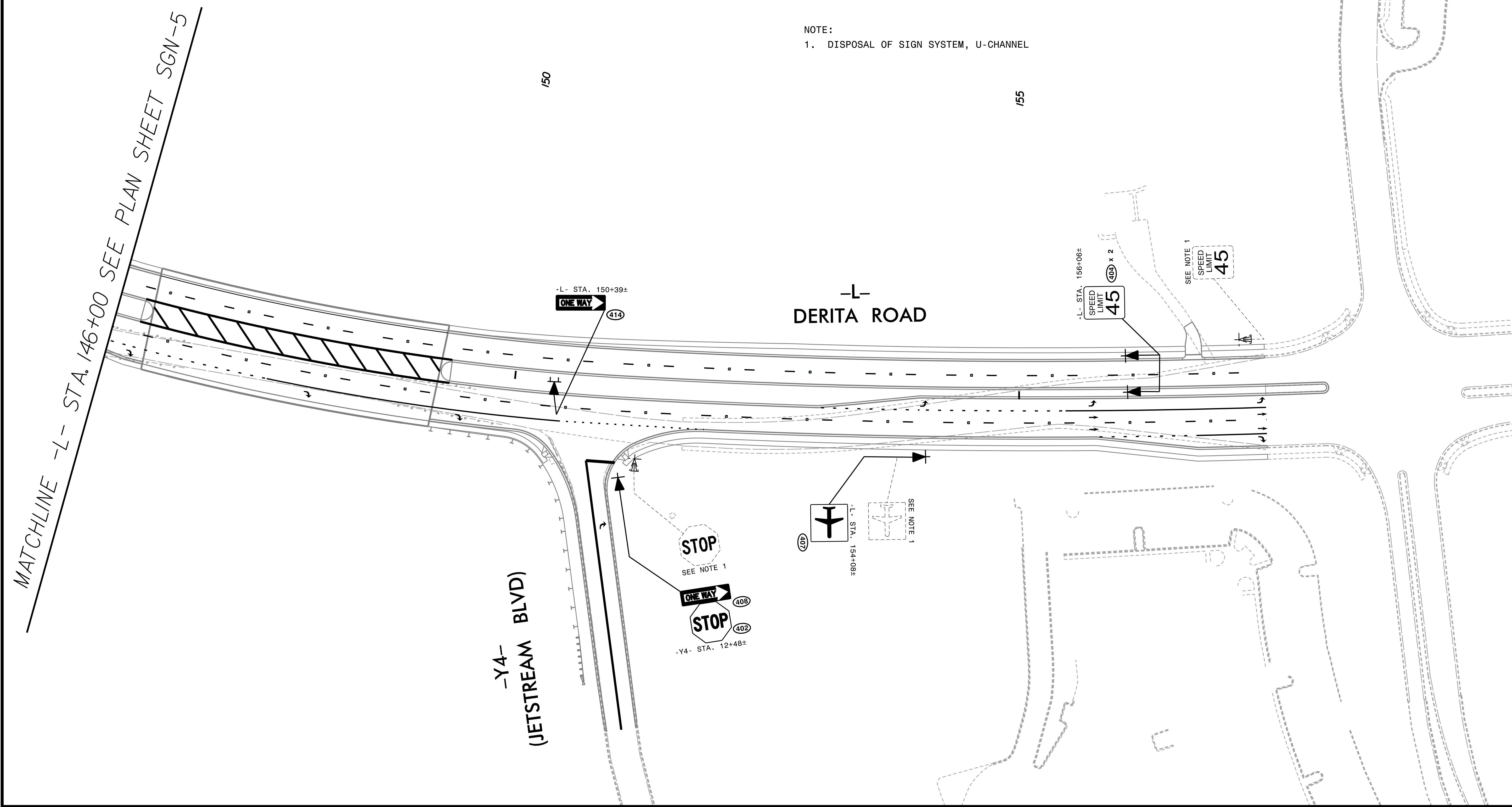
NOTE:
1. DISPOSAL OF SIGN SYSTEM, U-CHANNEL

PROJECT REFERENCE NO.	SHEET NO.
U-4910A	SGN-6
APPROVED: _____	
DATE: _____	
SEAL	
	



MATCHLINE -L- STA. 146+00 SEE PLAN SHEET SGN-5

NOTE:
1. DISPOSAL OF SIGN SYSTEM, U-CHANNEL



-Y4-
(JETSTREAM BLVD)

-L-
DERITA ROAD

-L- STA. 150+39±
ONE WAY

STOP
SEE NOTE 1
ONE WAY
STOP
-Y4- STA. 12+48±

-L- STA. 156+06±
SPEED LIMIT 45
40 x 2

SEE NOTE 1
SPEED LIMIT 45

-L- STA. 154+08±
40

SEE NOTE 1

150

155