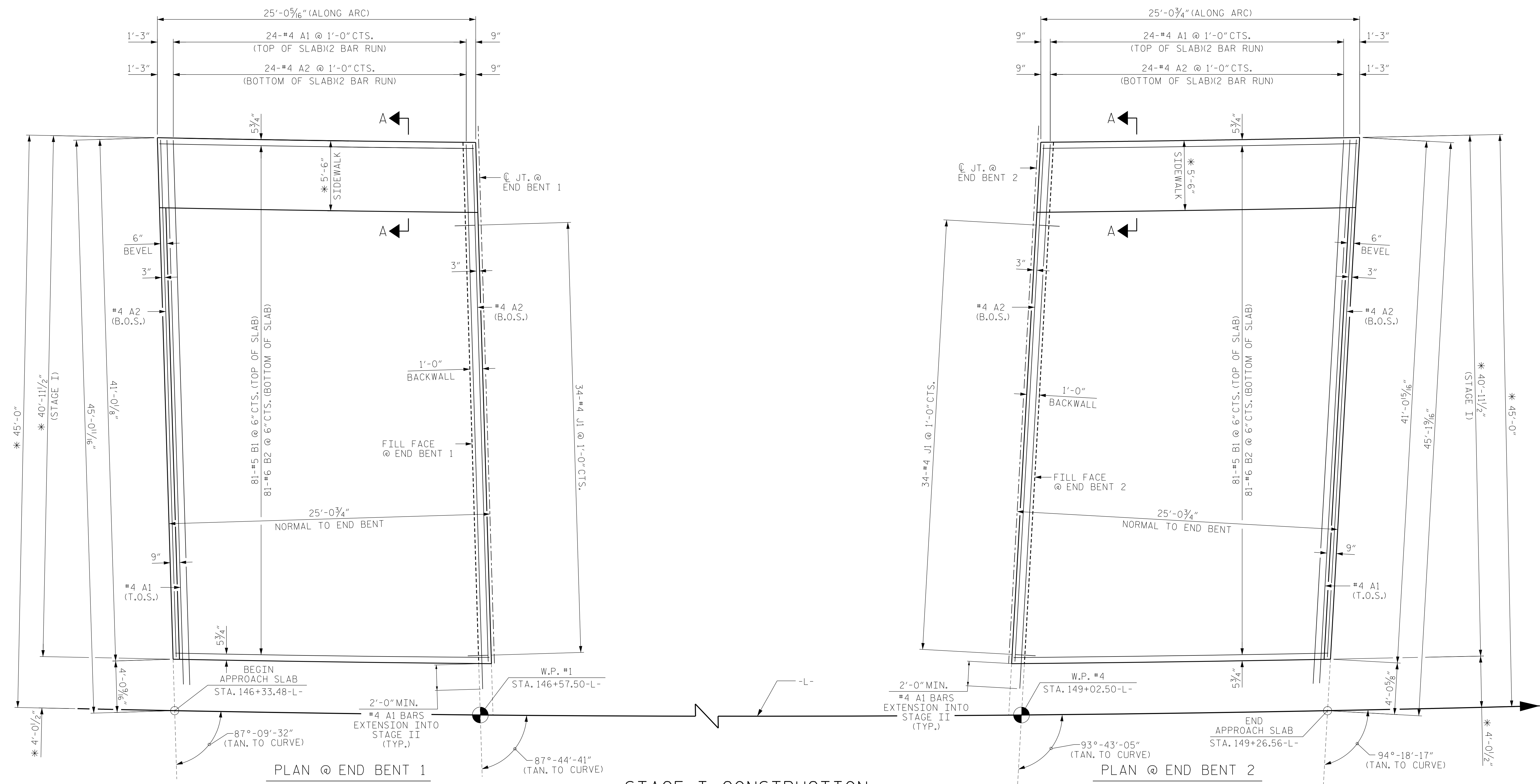


DATE: 11/30/2016
TIME: 10:55:58 AM

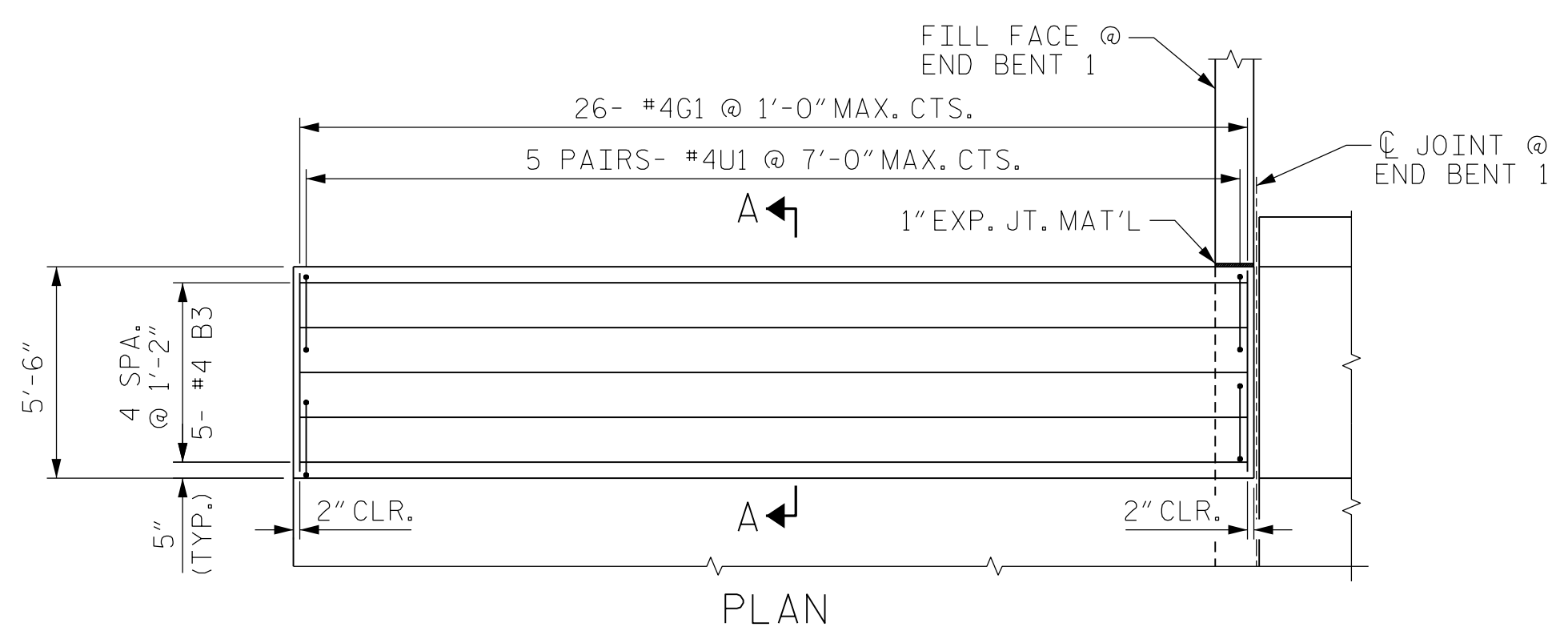
USER: H:\aecom\11302016\062030471\002_Structural\08_Bridge\0401_03_14910A_SML_552_A50.dgn



STAGE I CONSTRUCTION

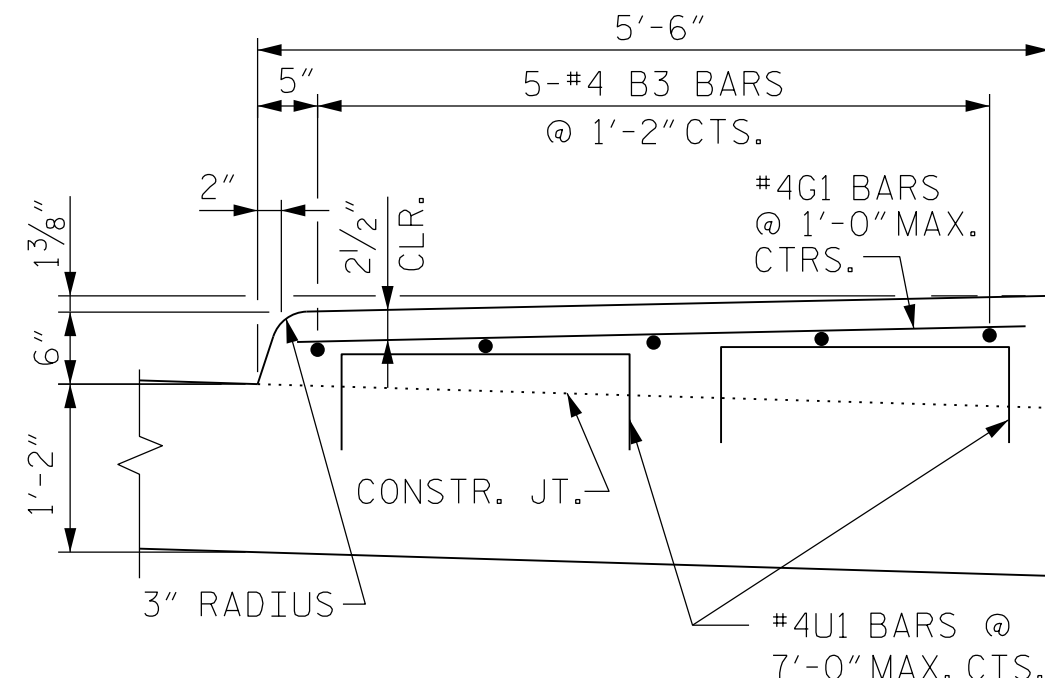
* RADIAL DIMENSIONS

T.O.S = TOP OF SLAB
B.O.S = BOTTOM OF SLAB



PLAN

LEFT SIDE END BENT 1 SHOWN, OTHER CORNERS ARE SIMILAR.

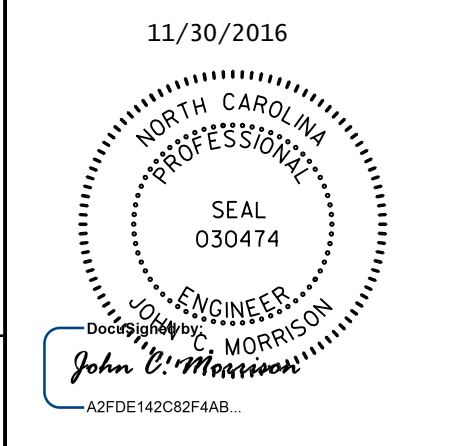


SECTION A-A

NOTE:
GROOVED CONTRACTION JOINT, 1/2" IN DEPTH, SHALL BE TOOLED IN ALL EXPOSED FACES OF THE SIDEWALK IN ACCORDANCE WITH ARTICLE 825-10(B) OF THE STANDARD SPECIFICATIONS. THE CONTRACTION JOINT SHALL BE LOCATED AT A SPACING OF 8 FT. TO 10 FT. BETWEEN EXPANSION JOINTS. NO CONTRACTION JOINTS WILL BE REQUIRED FOR SEGMENTS LESS THAN 10 FEET IN LENGTH.

PROJECT NO. U-4910A
CABARRUS COUNTY
STATION: 147+80.00 -L-

SHEET 1 OF 4



STATE OF NORTH CAROLINA
DEPARTMENT OF TRANSPORTATION
RALEIGH

BRIDGE APPROACH SLAB FOR FLEXIBLE PAVEMENT
STAGE I

REVISIONS						SHEET NO.
NO.	BY:	DATE:	NO.	BY:	DATE:	S-52
1			3			TOTAL SHEETS
2			4			55

DOCUMENT NOT CONSIDERED FINAL UNLESS ALL SIGNATURES COMPLETED

DRAWN BY: K.H. COMPTON DATE: 5/2016
CHECKED BY: G.L. HAMILTON DATE: 7/2016
DESIGNED BY: K.H. COMPTON DATE: 5/2016

SIDEWALK DETAILS